

Converting Colors

RGB(180, 127, 127)

Have a look what the booklet for
RGB(180, 127, 127) contains.

RGB(180, 127, 127)	3
<i>Conversions</i>	4
<i>Details</i>	6
<i>Harmonies</i>	11
<i>Previews</i>	23
<i>Color Blindness Simulation</i>	26
<i>CSS Examples</i>	29

Color

RGB(180, 127, 127)

Conversions

Conversions Part 1

Format	Color
Hex	B47F7F
RGB	180, 127, 127
RGB Percent	71%, 50%, 50%
CMY	0.2941, 0.5020, 0.5020
CMYK	0.00, 0.29, 0.29, 0.29
HSL	0°, 26%, 60%
HSV	0°, 29%, 71%
XYZ	30.2425, 26.4143, 23.5832
YIQ	142.8470, 31.5880, 11.2360

Conversions

Conversions Part 2

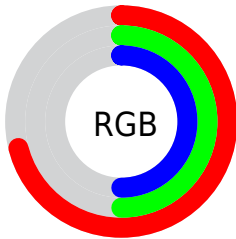
Format	Color
R_{YB}	180, 127, 127
Decimal	11829119
CIE Lab	58.43, 20.54, 8.22
CIE LCh	58, 22.118, 21.803
Yxy	26.4143, 0.3769, 0.3292
Android (android.graphics.Color)	4290019199 (0xFFB47F7F)
YUV	142.8470, -7.8126, 32.5832
Hunter-Lab	51.3949, 15.0945, 8.7705

Details

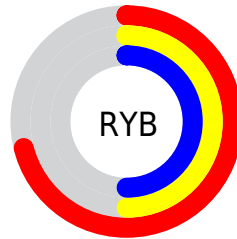
The RGB color **180, 127, 127** is a dark color, and the websafe version is hex **CC9999**. A complement of this color would be **127, 180, 180**, and the grayscale version is **143, 143, 143**.

A 20% lighter version of the original color is **237, 180, 180**, and **126, 77, 78** is the 20% darker color. If you saturate the color by 10%, you get **180, 109, 109**, and if you desaturate by 10%, it is **180, 145, 145**.

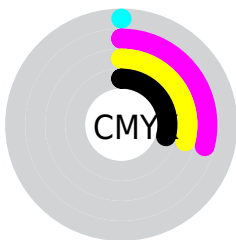
Distribution



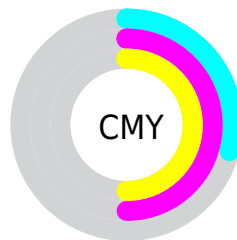
- Red (71%)
- Green (50%)
- Blue (50%)



- Red (71%)
- Yellow (50%)
- Blue (50%)



- Cyan (0%)
- Magenta (29%)
- Yellow (29%)
- Black (29%)




- Cyan (29%)
- Magenta (50%)
- Yellow (50%)

Brightness & Saturation Gradients

These gradients show how the RGB color 180, 127, 127 changes by changing the brightness by 10 percent. The first figure shows a shift by +10% for each color and the second figure -10%.

Similar to the brightness gradients but the following saturation gradients show a change of the RGB color 180, 127, 127 by changing the saturation by 10% instead.


 180, 127, 127


255, 255, 255

 237, 180, 180

 255, 208, 207

 255, 236, 235


 180, 127, 127

 153, 102, 102

 126, 77, 78

 100, 54, 55


 75, 32, 34


 51, 10, 12


 27, 0, 1

 0, 0, 0


 180, 127, 127

 180, 109, 109


 180, 127, 127

 180, 145, 145


 180, 91, 91

 180, 163, 163

 180, 73, 73

 180, 181, 181

 180, 55, 55

 180, 199, 199

 180, 37, 37

 180, 217, 217

 180, 19, 19

 180, 235, 235

 180, 1, 1

 180, 253, 253

 180, 0, 0

 180, 255, 255

Harmonies

Analogous

The Analogous color harmony consists of three colors that are next to each other on the color wheel.



176, 127, 147



180, 127, 127



174, 131, 111

Triad

The Triadic color harmony groups three colors that are evenly spaced from another and form a triangle on the color wheel.



180, 127, 127



118, 148, 116



109, 144, 178

Complementary

The Complementary color scheme is a pair of colors which are on the opposite of each other on the color wheel.



180, 127, 127



127, 180, 180

Split Complementary

Split-complementary colors differ from the complementary color scheme. The scheme consists of three colors, the original color and two neighbors of the complement color.



88, 149, 170



180, 127, 127



97, 151, 134

Square

The Square scheme is like the rectangle color scheme, but the four colors are evenly spaced on the color wheel.



180, 127, 127



140, 144, 104



84, 151, 154



136, 137, 176

Rectangle

The Rectangle color scheme consists of four colors that form a rectangle on the color wheel.



180, 127, 127



165, 135, 104



84, 151, 154



101, 146, 177

Sweetspot

The Sweet Spot groups the original color and five complimentary colors.



180, 127, 127



235, 213, 213



180, 127, 180



117, 104, 104



245, 245, 245



117, 117, 117

Same Dimension

The Same Dimension uses a secret algorithm to generate beautiful new colors.



180, 127, 127



235, 152, 152



180, 154, 127



89, 80, 80



153, 0, 0



26, 0, 0

Inverse Universe

The Inverse Universe completely reimagines the original color for something new.



127, 180, 180



152, 235, 235



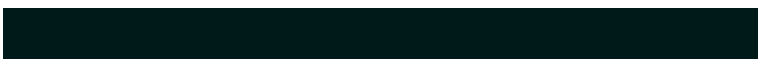
127, 154, 180



80, 89, 89



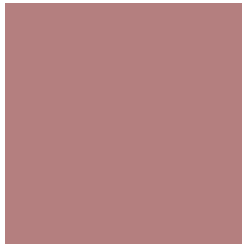
0, 153, 153



0, 26, 26

Previews

White Background



This preview shows how the RGB color 180, 127, 127 looks on a white background.

Color Contrast Check

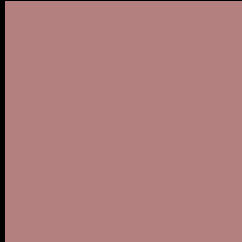
Large Text (above 18pt) WCAG AA ✓ Pass

Any Text WCAG AA ✗ Fail

Large Text (above 18pt) WCAG AAA ✗ Fail

Any Text WCAG AAA ✗ Fail

Black Background



This preview shows how the RGB color 180, 127, 127 looks on a black background.

Color Contrast Check

Large Text (above 18pt) WCAG AA ✓ Pass

Any Text WCAG AA ✓ Pass

Large Text (above 18pt) WCAG AAA ✓ Pass

Any Text WCAG AAA × Fail

If you want to check with other color combinations, try the [Color Contrast Checker](#).

RGB 180, 127, 127 Background



This preview shows how black text looks on a background with the RGB color 180, 127, 127.

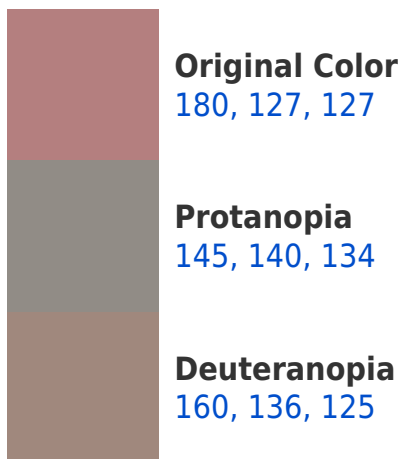


This preview shows how white text looks on a background with the RGB color 180, 127, 127.

Color Blindness Simulation

Color vision deficiency is a very complex topic, and I could not describe the different causes any better than Wikipedia does, so if you want to learn more, you should check out their [article about color blindness](#).

Dichromacy





Tritanopia
181, 126, 135

Trichromacy



Original Color

180, 127, 127

Protanomaly

158, 135, 131

Deuteranomaly

167, 133, 126

Tritanomaly

181, 126, 132

Monochromacy



Original Color

180, 127, 127

Achromatopsia

143, 143, 143

Achromatomaly

156, 137, 137

CSS Examples

Text

The CSS property to change the color of the text to RGB 180, 127, 127 is called "color". The color property can be set on classes, ids or directly on the HTML element.

This example shows how text in the color `rgb(180, 127, 127)` looks like.

```
.text, #text, p{  
    color:rgb(180, 127, 127)  
}
```

If you want to add a text shadow in that color use the text-shadow property, you can generate a text shadow directly with our [CSS Text Shadow Generator](#).

Here you see how black text with a 4 pixel rgb(180, 127, 127) colored shadow looks like.

```
.shadow{ text-shadow: 4px 4px 2px rgb(180, 127, 127) }
```

Border

The CSS property to change the border of an element to RGB 180, 127, 127 is called "border". The border property can be set on classes, ids or directly on the HTML element.

This example shows the color as border, it can be applied via the CSS property "border" or "border-color".

```
.border, #border, table{ border:4px solid rgb(180, 127, 127) }
```

If only the border color should be changed use the property `border-color`.

```
.border{ border-color:rgb(180, 127, 127) }
```

If you want to add a box shadow in that color use:

Here you see how a box with a 4 pixel `rgb(180, 127, 127)` colored shadow looks like.

```
.boxshadow{ -moz-box-shadow:4px 4px 4px 4px rgb(180, 127, 127); -webkit-box-shadow:4px 4px 4px 4px rgb(180, 127, 127); box-shadow:4px 4px 4px 4px rgb(180, 127, 127) }
```

Background

The CSS property to change the background color of an element to RGB 180, 127, 127 is called "background". The background property can be set on classes, ids or directly on the HTML element.

```
.background, #background, body{  
background: rgb(180, 127, 127) }
```

If only the background color should be changed can be used:

```
.background{ background-color: rgb(180,  
127, 127) }
```

This example shows the color as background, it is applied via the CSS property "background".

To optimize and compress your CSS code, you can use our [online CSS compressor and optimizer](#) based on csstidy. If you want to create a linear or radial gradient as background or border, check our [CSS Gradient Generator](#).

Hey! You found this booklet interesting? Support Converting Colors with the new Membership Option!

The pro membership hides all ads, plus gives you double the colors in the color bucket, and more awesome pro features!

[Learn more, Memberships starting at \\$2.50/m!](#)

**Follow me
on Twitter!**

@ConvertingColor