

Converting Colors

RGB(180, 134, 139)

Have a look what the booklet for
RGB(180, 134, 139) contains.

RGB(180, 134, 139)	3
<i>Conversions</i>	4
<i>Details</i>	6
<i>Harmonies</i>	11
<i>Previews</i>	23
<i>Color Blindness Simulation</i>	26
<i>CSS Examples</i>	29

Color

RGB(180, 134, 139)

Conversions

Conversions Part 1

Format	Color
Hex	B4868B
RGB	180, 134, 139
RGB Percent	71%, 53%, 55%
CMY	0.2941, 0.4745, 0.4549
CMYK	0.00, 0.26, 0.23, 0.29
HSL	353°, 23%, 62%
HSV	353°, 26%, 71%
XYZ	32.0077, 28.6176, 28.2629
YIQ	148.3240, 25.8110, 11.3070

Conversions

Conversions Part 2

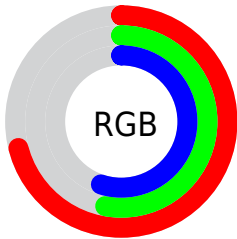
Format	Color
RYB	180, 134, 139
Decimal	11830923
CIELab	60.44, 18.37, 4.22
CIElCh	60, 18.847, 12.932
Yxy	28.6176, 0.3601, 0.3220
Android (android.graphics.Color)	4290021003 (0xFFB4868B)
YUV	148.3240, -4.5967, 27.7799
Hunter-Lab	53.4954, 13.1843, 6.1225

Details

The RGB color **180, 134, 139** is a light color, and the websafe version is hex **CC9999**. A complement of this color would be **134, 180, 175**, and the grayscale version is **148, 148, 148**.

A 20% lighter version of the original color is **237, 187, 192**, and **126, 84, 89** is the 20% darker color. If you saturate the color by 10%, you get **180, 116, 123**, and if you desaturate by 10%, it is **180, 152, 155**.

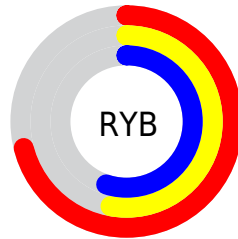
Distribution



Red (71%)

Green (53%)

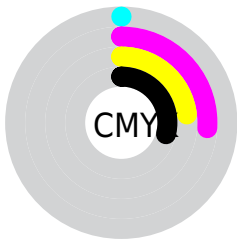
Blue (55%)



Red (71%)

Yellow (53%)

Blue (55%)

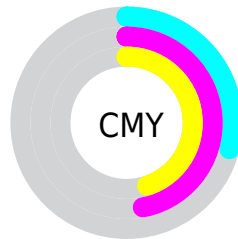


Cyan (0%)

Magenta (26%)

Yellow (23%)

Black (29%)



Cyan (29%)


Magenta (47%)

Yellow (45%)

Brightness & Saturation Gradients

These gradients show how the RGB color 180, 134, 139 changes by changing the brightness by 10 percent. The first figure shows a shift by +10% for each color and the second figure -10%.

Similar to the brightness gradients but the following saturation gradients show a change of the RGB color 180, 134, 139 by changing the saturation by 10% instead.

 180, 134, 139

255, 255, 255

 237, 187, 192


 255, 215, 220


 255, 244, 249

 180, 134, 139

 153, 109, 114

 126, 84, 89

 101, 61, 66


 76, 38, 44

 52, 17, 23

 33, 0, 1


 0, 0, 0


 180, 134, 139

 180, 116, 123


 180, 134, 139

 180, 152, 155

 180, 98, 107

 180, 170, 171

 180, 80, 91

 180, 188, 187

 180, 62, 75

 180, 206, 203

 180, 44, 59

 180, 224, 219

 180, 26, 43

 180, 242, 235

 180, 8, 27

 180, 255, 251

 180, 0, 20

 180, 255, 255

Harmonies

Analogous

The Analogous color harmony consists of three colors that are next to each other on the color wheel.



173, 135, 156



180, 134, 139



178, 137, 124

Triad

The Triadic color harmony groups three colors that are evenly spaced from another and form a triangle on the color wheel.



180, 134, 139



132, 152, 121



114, 150, 177

Complementary

The Complementary color scheme is a pair of colors which are on the opposite of each other on the color wheel.



180, 134, 139



134, 180, 175

Split Complementary

Split-complementary colors differ from the complementary color scheme. The scheme consists of three colors, the original color and two neighbors of the complement color.



101, 154, 168



180, 134, 139



114, 155, 135

Square

The Square scheme is like the rectangle color scheme, but the four colors are evenly spaced on the color wheel.



180, 134, 139



151, 147, 113



101, 155, 153



136, 145, 178

Rectangle

The Rectangle color scheme consists of four colors that form a rectangle on the color wheel.



180, 134, 139



171, 140, 117



101, 155, 153



109, 152, 175

Sweetspot

The Sweet Spot groups the original color and five complimentary colors.



180, 134, 139



235, 216, 218



175, 134, 180



117, 106, 107



245, 245, 245



117, 117, 117

Same Dimension

The Same Dimension uses a secret algorithm to generate beautiful new colors.



180, 134, 139



235, 162, 170



180, 152, 134



89, 80, 81



153, 0, 17



26, 0, 3

Inverse Universe

The Inverse Universe completely reimagines the original color for something new.



180, 134, 139



235, 162, 170



134, 162, 180



89, 80, 81



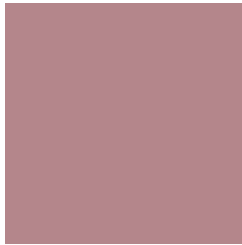
153, 0, 17



26, 0, 3

Previews

White Background



This preview shows how the RGB color 180, 134, 139 looks on a white background.

Color Contrast Check

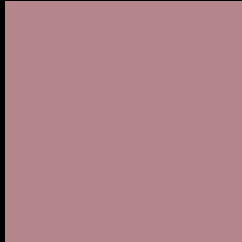
Large Text (above 18pt) WCAG AA ✓ Pass

Any Text WCAG AA ✗ Fail

Large Text (above 18pt) WCAG AAA ✗ Fail

Any Text WCAG AAA ✗ Fail

Black Background



This preview shows how the RGB color 180, 134, 139 looks on a black background.

Color Contrast Check

Large Text (above 18pt) WCAG AA ✓ Pass

Any Text WCAG AA ✓ Pass

Large Text (above 18pt) WCAG AAA ✓ Pass

Any Text WCAG AAA × Fail

If you want to check with other color combinations, try the [Color Contrast Checker](#).

RGB 180, 134, 139 Background



This preview shows how black text looks on a background with the RGB color 180, 134, 139.



This preview shows how white text looks on a background with the RGB color 180, 134, 139.

Color Blindness Simulation

Color vision deficiency is a very complex topic, and I could not describe the different causes any better than Wikipedia does, so if you want to learn more, you should check out their [article about color blindness](#).

Dichromacy



Original Color

180, 134, 139

Protanopia

149, 145, 145

Deuteranopia

163, 141, 138



Tritanopia

181, 133, 144

Trichromacy



Original Color

180, 134, 139

Protanomaly

160, 141, 143

Deuteranomaly

169, 138, 138

Tritanomaly

181, 133, 142

Monochromacy



Original Color

180, 134, 139

Achromatopsia

148, 148, 148

Achromatomaly

160, 143, 145

CSS Examples

Text

The CSS property to change the color of the text to RGB 180, 134, 139 is called "color". The color property can be set on classes, ids or directly on the HTML element.

This example shows how text in the color rgb(180, 134, 139) looks like.

```
.text, #text, p{  
    color:rgb(180, 134, 139)  
}
```

If you want to add a text shadow in that color use the text-shadow property, you can generate a text shadow directly with our [CSS Text Shadow Generator](#).

Here you see how black text with a 4 pixel rgb(180, 134, 139) colored shadow looks like.

```
.shadow{ text-shadow: 4px 4px 2px rgb(180, 134, 139) }
```

Border

The CSS property to change the border of an element to RGB 180, 134, 139 is called "border". The border property can be set on classes, ids or directly on the HTML element.

This example shows the color as border, it can be applied via the CSS property "border" or "border-color".

```
.border, #border, table{ border:4px solid rgb(180, 134, 139) }
```

If only the border color should be changed use the property `border-color`.

```
.border{ border-color:rgb(180, 134, 139) }
```

If you want to add a box shadow in that color use:

Here you see how a box with a 4 pixel `rgb(180, 134, 139)` colored shadow looks like.

```
.boxshadow{ -moz-box-shadow:4px 4px 4px  
4px rgb(180, 134, 139); -webkit-box-  
shadow:4px 4px 4px 4px rgb(180, 134, 139);  
box-shadow:4px 4px 4px 4px rgb(180, 134,  
139) }
```

Background

The CSS property to change the background color of an element to RGB 180, 134, 139 is called "background". The background property can be set on classes, ids or directly on the HTML element.

```
.background, #background, body{  
background: rgb(180, 134, 139) }
```

If only the background color should be changed can be used:

```
.background{ background-color: rgb(180,  
134, 139) }
```

This example shows the color as background, it is applied via the CSS property "background".

To optimize and compress your CSS code, you can use our [online CSS compressor and optimizer](#) based on csstidy. If you want to create a linear or radial gradient as background or border, check our [CSS Gradient Generator](#).

Hey! You found this booklet interesting? Support Converting Colors with the new Membership Option!

The pro membership hides all ads, plus gives you double the colors in the color bucket, and more awesome pro features!

[Learn more, Memberships starting at \\$2.50/m!](#)

**Follow me
on Twitter!**

@ConvertingColor