

Converting Colors

RGB(181, 126, 119)

Have a look what the booklet for
RGB(181, 126, 119) contains.

RGB(181, 126, 119)	3
<i>Conversions</i>	4
<i>Details</i>	6
<i>Harmonies</i>	11
<i>Previews</i>	23
<i>Color Blindness Simulation</i>	26
<i>CSS Examples</i>	29

Color

RGB(181, 126, 119)

Conversions

Conversions Part 1

Format	Color
Hex	B57E77
RGB	181, 126, 119
RGB Percent	71%, 49%, 47%
CMY	0.2902, 0.5059, 0.5333
CMYK	0.00, 0.30, 0.34, 0.29
HSL	7°, 30%, 59%
HSV	7°, 34%, 71%
XYZ	29.8467, 26.0774, 20.9131
YIQ	141.6470, 35.0270, 9.4830

Conversions

Conversions Part 2

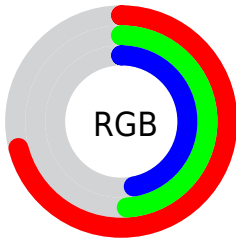
Format	Color
RYB	181, 127, 119
Decimal	11894391
CIELab	58.11, 20.41, 12.38
CIElCh	58, 23.873, 31.245
Yxy	26.0774, 0.3884, 0.3394
Android (android.graphics.Color)	4290084471 (0xFFB57E77)
YUV	141.6470, -11.1650, 34.5126
Hunter-Lab	51.0660, 14.9628, 11.4651

Details

The RGB color **181, 126, 119** is a dark color, and the websafe version is hex **996666**. A complement of this color would be **119, 174, 181**, and the grayscale version is **142, 142, 142**.

A 20% lighter version of the original color is **238, 179, 171**, and **126, 76, 71** is the 20% darker color. If you saturate the color by 10%, you get **181, 110, 101**, and if you desaturate by 10%, it is **181, 142, 137**.

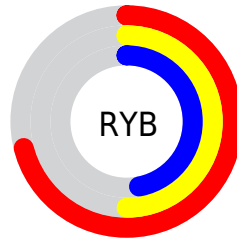
Distribution



Red (71%)

Green (49%)

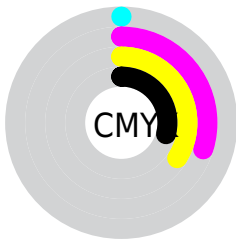
Blue (47%)



Red (71%)

Yellow (50%)

Blue (47%)

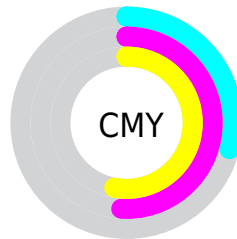


Cyan (0%)

Magenta (30%)

Yellow (34%)

Black (29%)



Cyan (29%)


Magenta (51%)

Yellow (53%)

Brightness & Saturation Gradients

These gradients show how the RGB color 181, 126, 119 changes by changing the brightness by 10 percent. The first figure shows a shift by +10% for each color and the second figure -10%.

Similar to the brightness gradients but the following saturation gradients show a change of the RGB color 181, 126, 119 by changing the saturation by 10% instead.


 181, 126, 119

255, 255, 255

 238, 179, 171


 255, 207, 198

 255, 235, 226

 181, 126, 119

 153, 101, 94

 126, 76, 71


 100, 53, 48


 75, 31, 27


 51, 9, 1


 25, 0, 1

 0, 0, 0


 181, 126, 119

 181, 110, 101


 181, 126, 119


 181, 142, 137


 181, 94, 83

 181, 158, 155

 181, 78, 65

 181, 174, 173

 181, 62, 47


 181, 190, 191

 181, 46, 29

 181, 206, 210

 181, 30, 10

 181, 222, 228

 181, 20, 0

 181, 238, 246

 181, 254, 255

 181, 255, 255

Harmonies

Analogous

The Analogous color harmony consists of three colors that are next to each other on the color wheel.



180, 124, 140



181, 126, 119



171, 132, 104

Triad

The Triadic color harmony groups three colors that are evenly spaced from another and form a triangle on the color wheel.



181, 126, 119



107, 149, 119



114, 141, 181

Complementary

The Complementary color scheme is a pair of colors which are on the opposite of each other on the color wheel.



181, 126, 119



119, 174, 181

Split Complementary

Split-complementary colors differ from the complementary color scheme. The scheme consists of three colors, the original color and two neighbors of the complement color.



87, 147, 176



181, 126, 119



86, 151, 140

Square

The Square scheme is like the rectangle color scheme, but the four colors are evenly spaced on the color wheel.



181, 126, 119



131, 145, 104



75, 151, 161



144, 134, 175

Rectangle

The Rectangle color scheme consists of four colors that form a rectangle on the color wheel.



181, 126, 119



160, 136, 99



75, 151, 161



105, 143, 180

Sweetspot

The Sweet Spot groups the original color and five complimentary colors.



181, 126, 119



235, 214, 211



181, 119, 175



117, 105, 103



245, 245, 245



117, 117, 117

Same Dimension

The Same Dimension uses a secret algorithm to generate beautiful new colors.



181, 126, 119



235, 149, 138



181, 156, 119



89, 81, 80



153, 17, 0



26, 3, 0

Inverse Universe

The Inverse Universe completely reimagines the original color for something new.



119, 174, 181



138, 224, 235



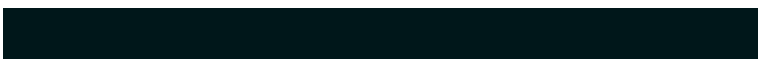
119, 144, 181



80, 88, 89



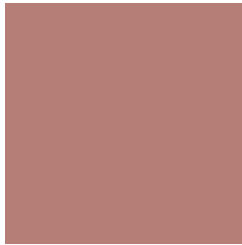
0, 136, 153



0, 23, 26

Previews

White Background



This preview shows how the RGB color 181, 126, 119 looks on a white background.

Color Contrast Check

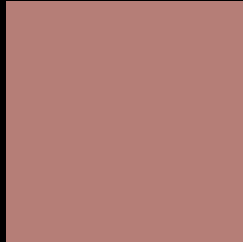
Large Text (above 18pt) WCAG AA ✓ Pass

Any Text WCAG AA ✗ Fail

Large Text (above 18pt) WCAG AAA ✗ Fail

Any Text WCAG AAA ✗ Fail

Black Background



This preview shows how the RGB color 181, 126, 119 looks on a black background.

Color Contrast Check

Large Text (above 18pt) WCAG AA ✓ Pass

Any Text WCAG AA ✓ Pass

Large Text (above 18pt) WCAG AAA ✓ Pass

Any Text WCAG AAA × Fail

If you want to check with other color combinations, try the [Color Contrast Checker](#).

RGB 181, 126, 119 Background



This preview shows how black text looks on a background with the RGB color 181, 126, 119.



This preview shows how white text looks on a background with the RGB color 181, 126, 119.

Color Blindness Simulation

Color vision deficiency is a very complex topic, and I could not describe the different causes any better than Wikipedia does, so if you want to learn more, you should check out their [article about color blindness](#).

Dichromacy



Original Color
181, 126, 119

Protanopia
146, 140, 126

Deuteranopia
161, 135, 117



Tritanopia
182, 124, 133

Trichromacy



Original Color
181, 126, 119

Protanomaly
159, 135, 123

Deuteranomaly
168, 132, 118

Tritanomaly
182, 125, 128

Monochromacy



Original Color
181, 126, 119

Achromatopsia
142, 142, 142

Achromatomaly
156, 136, 134

CSS Examples

Text

The CSS property to change the color of the text to RGB 181, 126, 119 is called "color". The color property can be set on classes, ids or directly on the HTML element.

This example shows how text in the color `rgb(181, 126, 119)` looks like.

```
.text, #text, p{  
    color:rgb(181, 126, 119)  
}
```

If you want to add a text shadow in that color use the text-shadow property, you can generate a text shadow directly with our [CSS Text Shadow Generator](#).

Here you see how black text with a 4 pixel rgb(181, 126, 119) colored shadow looks like.

```
.shadow{ text-shadow: 4px 4px 2px rgb(181, 126, 119) }
```

Border

The CSS property to change the border of an element to RGB 181, 126, 119 is called "border". The border property can be set on classes, ids or directly on the HTML element.

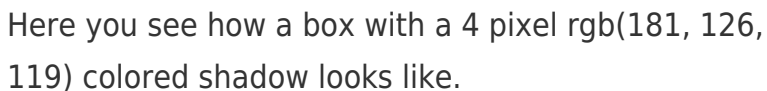
This example shows the color as border, it can be applied via the CSS property "border" or "border-color".

```
.border, #border, table{ border:4px solid rgb(181, 126, 119) }
```

If only the border color should be changed use the property `border-color`.

```
.border{ border-color:rgb(181, 126, 119) }
```

If you want to add a box shadow in that color use:



Here you see how a box with a 4 pixel `rgb(181, 126, 119)` colored shadow looks like.

```
.boxshadow{ -moz-box-shadow:4px 4px 4px 4px rgb(181, 126, 119); -webkit-box-shadow:4px 4px 4px 4px rgb(181, 126, 119); box-shadow:4px 4px 4px 4px rgb(181, 126, 119) }
```

Background

The CSS property to change the background color of an element to RGB 181, 126, 119 is called "background". The background property can be set on classes, ids or directly on the HTML element.

```
.background, #background, body{  
background: rgb(181, 126, 119) }
```

If only the background color should be changed can be used:

```
.background{ background-color: rgb(181,  
126, 119) }
```

This example shows the color as background, it is applied via the CSS property "background".

To optimize and compress your CSS code, you can use our [online CSS compressor and optimizer](#) based on csstidy. If you want to create a linear or radial gradient as background or border, check our [CSS Gradient Generator](#).

Hey! You found this booklet interesting? Support Converting Colors with the new Membership Option!

The pro membership hides all ads, plus gives you double the colors in the color bucket, and more awesome pro features!

[Learn more, Memberships starting at \\$2.50/m!](#)

**Follow me
on Twitter!**

@ConvertingColor