

Converting Colors

RGB(182, 126, 134)

Have a look what the booklet for
RGB(182, 126, 134) contains.

RGB(182, 126, 134)	3
<i>Conversions</i>	4
<i>Details</i>	6
<i>Harmonies</i>	11
<i>Previews</i>	23
<i>Color Blindness Simulation</i>	26
<i>CSS Examples</i>	29

Color

RGB(182, 126, 134)

Conversions

Conversions Part 1

Format	Color
Hex	B67E86
RGB	182, 126, 134
RGB Percent	71%, 49%, 53%
CMY	0.2863, 0.5059, 0.4745
CMYK	0.00, 0.31, 0.26, 0.29
HSL	351°, 28%, 60%
HSV	351°, 31%, 71%
XYZ	31.0553, 26.5880, 26.0495
YIQ	143.6560, 30.8080, 14.3600

Conversions

Conversions Part 2

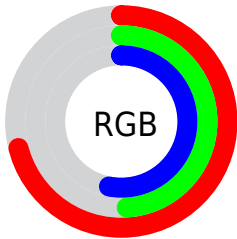
Format	Color
R _Y B	182, 126, 134
Decimal	11959942
CIE Lab	58.59, 22.87, 4.45
CIE LCh	59, 23.294, 11.005
Yxy	26.5880, 0.3711, 0.3177
Android (android.graphics.Color)	4290150022 (0xFFB67E86)
YUV	143.6560, -4.7604, 33.6277
Hunter-Lab	51.5636, 17.2694, 6.1417

Details

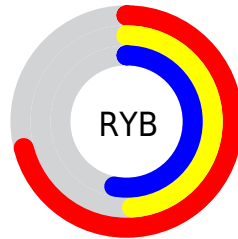
The RGB color **182, 126, 134** is a dark color, and the websafe version is hex **CC9999**. A complement of this color would be **126, 182, 174**, and the grayscale version is **144, 144, 144**.

A 20% lighter version of the original color is **239, 179, 187**, and **128, 76, 85** is the 20% darker color. If you saturate the color by 10%, you get **182, 108, 118**, and if you desaturate by 10%, it is **182, 144, 150**.

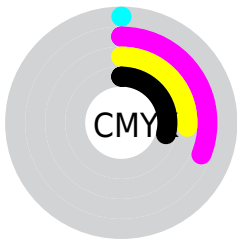
Distribution



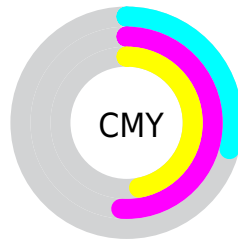
- Red (71%)
- Green (49%)
- Blue (53%)



- Red (71%)
- Yellow (49%)
- Blue (53%)



- Cyan (0%)
- Magenta (31%)
- Yellow (26%)
- Black (29%)



- Cyan (29%)
- Magenta (51%)
- Yellow (47%)

Brightness & Saturation Gradients

These gradients show how the RGB color 182, 126, 134 changes by changing the brightness by 10 percent. The first figure shows a shift by +10% for each color and the second figure -10%.

Similar to the brightness gradients but the following saturation gradients show a change of the RGB color 182, 126, 134 by changing the saturation by 10% instead.

 182, 126, 134

255, 255, 255

 239, 179, 187

 255, 207, 215


 255, 235, 243

 182, 126, 134

 155, 101, 109

 128, 76, 85

 102, 53, 61

 76, 30, 40

 52, 8, 19

 30, 0, 1

 0, 0, 0

 182, 126, 134

 182, 108, 118

 182, 126, 134

 182, 144, 150

 182, 90, 103

 182, 162, 165

 182, 71, 87

 182, 181, 181

 182, 53, 72

 182, 199, 196

 182, 35, 56

 182, 217, 212

 182, 17, 40

 182, 235, 228

 182, 0, 26

 182, 253, 243

 182, 255, 255

Harmonies

Analogous

The Analogous color harmony consists of three colors that are next to each other on the color wheel.



173, 128, 155



182, 126, 134



179, 129, 115

Triad

The Triadic color harmony groups three colors that are evenly spaced from another and form a triangle on the color wheel.



182, 126, 134



125, 148, 110



98, 147, 179

Complementary

The Complementary color scheme is a pair of colors which are on the opposite of each other on the color wheel.



182, 126, 134



126, 182, 174

Split Complementary

Split-complementary colors differ from the complementary color scheme. The scheme consists of three colors, the original color and two neighbors of the complement color.



80, 151, 167



182, 126, 134



102, 151, 127

Square

The Square scheme is like the rectangle color scheme, but the four colors are evenly spaced on the color wheel.



182, 126, 134



148, 142, 101



84, 152, 148



126, 140, 181

Rectangle

The Rectangle color scheme consists of four colors that form a rectangle on the color wheel.



182, 126, 134



172, 133, 106



84, 152, 148



90, 148, 176

Sweetspot

The Sweet Spot groups the original color and five complimentary colors.



182, 126, 134



237, 216, 219



174, 126, 182



120, 107, 109



247, 247, 247



120, 120, 120

Same Dimension

The Same Dimension uses a secret algorithm to generate beautiful new colors.



182, 126, 134



237, 149, 162



182, 146, 126



92, 83, 84



156, 0, 22



28, 0, 4

Inverse Universe

The Inverse Universe completely reimagines the original color for something new.



182, 126, 134



237, 149, 162



126, 162, 182



92, 83, 84



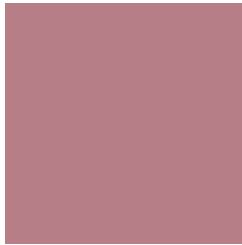
156, 0, 22



28, 0, 4

Previews

White Background



This preview shows how the RGB color 182, 126, 134 looks on a white background.

Color Contrast Check

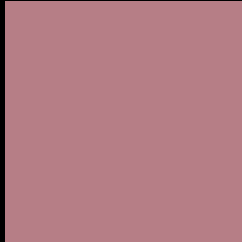
Large Text (above 18pt) WCAG AA ✓ Pass

Any Text WCAG AA ✗ Fail

Large Text (above 18pt) WCAG AAA ✗ Fail

Any Text WCAG AAA ✗ Fail

Black Background



This preview shows how the RGB color 182, 126, 134 looks on a black background.

Color Contrast Check

Large Text (above 18pt) WCAG AA ✓ Pass

Any Text WCAG AA ✓ Pass

Large Text (above 18pt) WCAG AAA ✓ Pass

Any Text WCAG AAA × Fail

If you want to check with other color combinations, try the [Color Contrast Checker](#).

RGB 182, 126, 134 Background



This preview shows how black text looks on a background with the RGB color 182, 126, 134.



This preview shows how white text looks on a background with the RGB color 182, 126, 134.

Color Blindness Simulation

Color vision deficiency is a very complex topic, and I could not describe the different causes any better than Wikipedia does, so if you want to learn more, you should check out their [article about color blindness](#).

Dichromacy





Tritanopia
182, 126, 135

Trichromacy



Original Color

182, 126, 134

Protanomaly

157, 136, 139

Deuteranomaly

167, 132, 133

Tritanomaly

182, 126, 135

Monochromacy



Original Color

182, 126, 134

Achromatopsia

144, 144, 144

Achromatomaly

158, 137, 140

CSS Examples

Text

The CSS property to change the color of the text to RGB 182, 126, 134 is called "color". The color property can be set on classes, ids or directly on the HTML element.

This example shows how text in the color rgb(182, 126, 134) looks like.

```
.text, #text, p{  
    color:rgb(182, 126, 134)  
}
```

If you want to add a text shadow in that color use the text-shadow property, you can generate a text shadow directly with our [CSS Text Shadow Generator](#).

Here you see how black text with a 4 pixel rgb(182, 126, 134) colored shadow looks like.

```
.shadow{ text-shadow: 4px 4px 2px rgb(182, 126, 134) }
```

Border

The CSS property to change the border of an element to RGB 182, 126, 134 is called "border". The border property can be set on classes, ids or directly on the HTML element.

This example shows the color as border, it can be applied via the CSS property "border" or "border-color".

```
.border, #border, table{ border:4px solid rgb(182, 126, 134) }
```

If only the border color should be changed use the property `border-color`.

```
.border{ border-color:rgb(182, 126, 134) }
```

If you want to add a box shadow in that color use:

Here you see how a box with a 4 pixel `rgb(182, 126, 134)` colored shadow looks like.

```
.boxshadow{ -moz-box-shadow:4px 4px 4px  
4px rgb(182, 126, 134); -webkit-box-  
shadow:4px 4px 4px 4px rgb(182, 126, 134);  
box-shadow:4px 4px 4px 4px rgb(182, 126,  
134) }
```

Background

The CSS property to change the background color of an element to RGB 182, 126, 134 is called "background". The background property can be set on classes, ids or directly on the HTML element.

```
.background, #background, body{  
background: rgb(182, 126, 134) }
```

If only the background color should be changed can be used:

```
.background{ background-color: rgb(182,  
126, 134) }
```

This example shows the color as background, it is applied via the CSS property "background".

To optimize and compress your CSS code, you can use our [online CSS compressor and optimizer](#) based on csstidy. If you want to create a linear or radial gradient as background or border, check our [CSS Gradient Generator](#).

Hey! You found this booklet interesting? Support Converting Colors with the new Membership Option!

The pro membership hides all ads, plus gives you double the colors in the color bucket, and more awesome pro features!

[Learn more, Memberships starting at \\$2.50/m!](#)

**Follow me
on Twitter!**

@ConvertingColor