

Converting Colors

RGB(182, 140, 140)

Have a look what the booklet for
RGB(182, 140, 140) contains.

RGB(182, 140, 140)	3
<i>Conversions</i>	4
<i>Details</i>	6
<i>Harmonies</i>	11
<i>Previews</i>	23
<i>Color Blindness Simulation</i>	26
<i>CSS Examples</i>	29

Color

RGB(182, 140, 140)

Conversions

Conversions Part 1

Format	Color
Hex	B68C8C
RGB	182, 140, 140
RGB Percent	71%, 55%, 55%
CMY	0.2863, 0.4510, 0.4510
CMYK	0.00, 0.23, 0.23, 0.29
HSL	0°, 22%, 63%
HSV	0°, 23%, 71%
XYZ	33.4031, 30.5947, 28.9558
YIQ	152.5580, 25.0320, 8.9040

Conversions

Conversions Part 2

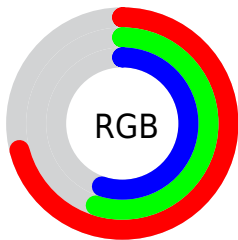
Format	Color
R _Y B	182, 140, 140
Decimal	11963532
CIE Lab	62.16, 15.93, 6.15
CIE LCh	62, 17.079, 21.111
Yxy	30.5947, 0.3594, 0.3291
Android (android.graphics.Color)	4290153612 (0xFFB68C8C)
YUV	152.5580, -6.1911, 25.8206
Hunter-Lab	55.3125, 10.9990, 7.6807

Details

The RGB color **182, 140, 140** is a light color, and the websafe version is hex **CC9999**. A complement of this color would be **140, 182, 182**, and the grayscale version is **153, 153, 153**.

A 20% lighter version of the original color is **239, 194, 193**, and **128, 90, 90** is the 20% darker color. If you saturate the color by 10%, you get **182, 122, 122**, and if you desaturate by 10%, it is **182, 158, 158**.

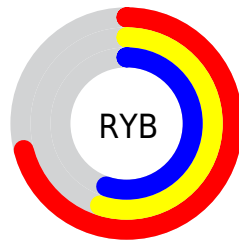
Distribution



Red (71%)

Green (55%)

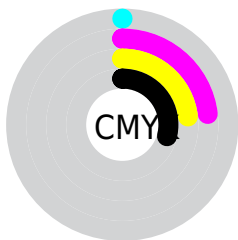
Blue (55%)



Red (71%)

Yellow (55%)

Blue (55%)

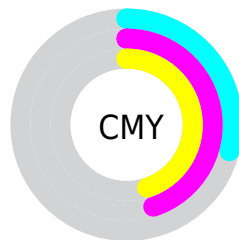


Cyan (0%)

Magenta (23%)

Yellow (23%)

Black (29%)



Cyan (29%)

Magenta (45%)

Yellow (45%)

Brightness & Saturation Gradients

These gradients show how the RGB color 182, 140, 140 changes by changing the brightness by 10 percent. The first figure shows a shift by +10% for each color and the second figure -10%.

Similar to the brightness gradients but the following saturation gradients show a change of the RGB color 182, 140, 140 by changing the saturation by 10% instead.

 182, 140, 140

255, 255, 255

 239, 194, 193

 255, 222, 221

 255, 250, 250

 182, 140, 140

 155, 114, 115

 128, 90, 90


 103, 66, 67

 78, 44, 45

 54, 22, 24

 34, 0, 0


 0, 0, 0

 182, 140, 140

 182, 122, 122


 182, 140, 140

 182, 158, 158

 182, 104, 104

 182, 176, 176

 182, 85, 85

 182, 195, 195

 182, 67, 67

 182, 213, 213

 182, 49, 49

 182, 231, 231

 182, 31, 31

 182, 249, 249

 182, 13, 13

 182, 255, 255

 182, 0, 0

Harmonies

Analogous

The Analogous color harmony consists of three colors that are next to each other on the color wheel.



178, 140, 155



182, 140, 140



178, 143, 127

Triad

The Triadic color harmony groups three colors that are evenly spaced from another and form a triangle on the color wheel.



182, 140, 140



133, 157, 131



127, 153, 180

Complementary

The Complementary color scheme is a pair of colors which are on the opposite of each other on the color wheel.



182, 140, 140



140, 182, 182

Split Complementary

Split-complementary colors differ from the complementary color scheme. The scheme consists of three colors, the original color and two neighbors of the complement color.



113, 157, 173



182, 140, 140



118, 159, 145

Square

The Square scheme is like the rectangle color scheme, but the four colors are evenly spaced on the color wheel.



182, 140, 140



151, 153, 122



110, 159, 161



147, 148, 178

Rectangle

The Rectangle color scheme consists of four colors that form a rectangle on the color wheel.



182, 140, 140



171, 146, 122



110, 159, 161



122, 154, 178

Sweetspot

The Sweet Spot groups the original color and five complimentary colors.



182, 140, 140



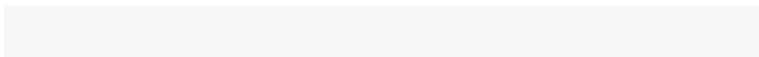
237, 221, 221



182, 140, 182



120, 110, 110



247, 247, 247



120, 120, 120

Same Dimension

The Same Dimension uses a secret algorithm to generate beautiful new colors.



182, 140, 140



237, 171, 171



182, 161, 140



92, 83, 83



156, 0, 0



28, 0, 0

Inverse Universe

The Inverse Universe completely reimagines the original color for something new.



140, 182, 182



171, 237, 237



140, 161, 182



83, 92, 92



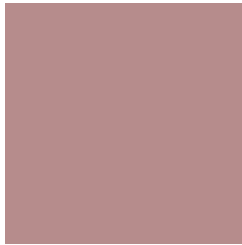
0, 156, 156



0, 28, 28

Previews

White Background



This preview shows how the RGB color 182, 140, 140 looks on a white background.

Color Contrast Check

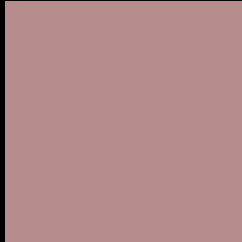
Large Text (above 18pt) WCAG AA × Fail

Any Text WCAG AA × Fail

Large Text (above 18pt) WCAG AAA × Fail

Any Text WCAG AAA × Fail

Black Background



This preview shows how the RGB color 182, 140, 140 looks on a black background.

Color Contrast Check

Large Text (above 18pt) WCAG AA ✓ Pass

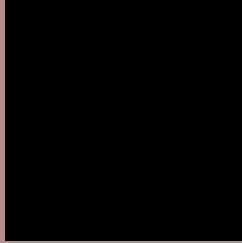
Any Text WCAG AA ✓ Pass

Large Text (above 18pt) WCAG AAA ✓ Pass

Any Text WCAG AAA ✓ Pass

If you want to check with other color combinations, try the [Color Contrast Checker](#).

RGB 182, 140, 140 Background



This preview shows how black text looks on a background with the RGB color 182, 140, 140.



This preview shows how white text looks on a background with the RGB color 182, 140, 140.

Color Blindness Simulation

Color vision deficiency is a very complex topic, and I could not describe the different causes any better than Wikipedia does, so if you want to learn more, you should check out their [article about color blindness](#).

Dichromacy



Original Color
182, 140, 140

Protanopia
154, 150, 145

Deuteranopia
169, 145, 139



Tritanopia
183, 139, 149

Trichromacy



Original Color

182, 140, 140

Protanomaly

164, 146, 143

Deuteranomaly

174, 143, 139

Tritanomaly

183, 139, 146

Monochromacy



Original Color

182, 140, 140

Achromatopsia

153, 153, 153

Achromatomaly

164, 148, 148

CSS Examples

Text

The CSS property to change the color of the text to RGB 182, 140, 140 is called "color". The color property can be set on classes, ids or directly on the HTML element.

This example shows how text in the color `rgb(182, 140, 140)` looks like.

```
.text, #text, p{  
    color:rgb(182, 140, 140)  
}
```

If you want to add a text shadow in that color use the text-shadow property, you can generate a text shadow directly with our [CSS Text Shadow Generator](#).

Here you see how black text with a 4 pixel rgb(182, 140, 140) colored shadow looks like.

```
.shadow{ text-shadow: 4px 4px 2px rgb(182, 140, 140) }
```

Border

The CSS property to change the border of an element to RGB 182, 140, 140 is called "border". The border property can be set on classes, ids or directly on the HTML element.

This example shows the color as border, it can be applied via the CSS property "border" or "border-color".

```
.border, #border, table{ border:4px solid rgb(182, 140, 140) }
```

If only the border color should be changed use the property `border-color`.

```
.border{ border-color:rgb(182, 140, 140) }
```

If you want to add a box shadow in that color use:

Here you see how a box with a 4 pixel `rgb(182, 140, 140)` colored shadow looks like.

```
.boxshadow{ -moz-box-shadow:4px 4px 4px  
4px rgb(182, 140, 140); -webkit-box-  
shadow:4px 4px 4px 4px rgb(182, 140, 140);  
box-shadow:4px 4px 4px 4px rgb(182, 140,  
140) }
```

Background

The CSS property to change the background color of an element to RGB 182, 140, 140 is called "background". The background property can be set on classes, ids or directly on the HTML element.

```
.background, #background, body{  
background: rgb(182, 140, 140) }
```

If only the background color should be changed can be used:

```
.background{ background-color: rgb(182,  
140, 140) }
```

This example shows the color as background, it is applied via the CSS property "background".

To optimize and compress your CSS code, you can use our [online CSS compressor and optimizer](#) based on csstidy. If you want to create a linear or radial gradient as background or border, check our [CSS Gradient Generator](#).

Hey! You found this booklet interesting? Support Converting Colors with the new Membership Option!

The pro membership hides all ads, plus gives you double the colors in the color bucket, and more awesome pro features!

[Learn more, Memberships starting at \\$2.50/m!](#)

**Follow me
on Twitter!**

@ConvertingColor