

Converting Colors

RGB(182, 147, 113)

Have a look what the booklet for
RGB(182, 147, 113) contains.

RGB(182, 147, 113)	3
<i>Conversions</i>	4
<i>Details</i>	6
<i>Harmonies</i>	11
<i>Previews</i>	23
<i>Color Blindness Simulation</i>	26
<i>CSS Examples</i>	29

Color

RGB(182, 147, 113)

Conversions

Conversions Part 1

Format	Color
Hex	B69371
RGB	182, 147, 113
RGB Percent	71%, 58%, 44%
CMY	0.2863, 0.4235, 0.5569
CMYK	0.00, 0.19, 0.38, 0.29
HSL	30°, 32%, 58%
HSV	30°, 38%, 71%
XYZ	32.7058, 32.0048, 20.0765
YIQ	153.5890, 31.7740, -3.1540

Conversions

Conversions Part 2

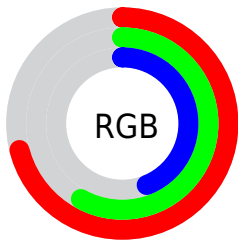
Format	Color
RYB	182, 180, 113
Decimal	11965297
CIELab	63.35, 8.36, 22.97
CIELCh	63, 24.445, 69.997
Yxy	32.0048, 0.3857, 0.3775
Android (android.graphics.Color)	4290155377 (0xFFB69371)
YUV	153.5890, -20.0104, 24.9164
Hunter-Lab	56.5728, 4.1918, 18.5601

Details

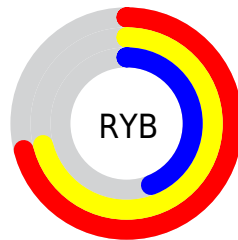
The RGB color **182, 147, 113** is a light color, and the websafe version is hex **CC9966**. A complement of this color would be **113, 148, 182**, and the grayscale version is **154, 154, 154**.

A 20% lighter version of the original color is **239, 201, 165**, and **128, 96, 65** is the 20% darker color. If you saturate the color by 10%, you get **182, 138, 95**, and if you desaturate by 10%, it is **182, 156, 131**.

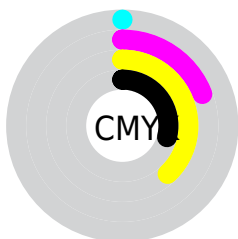
Distribution



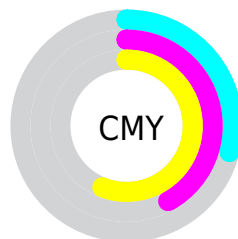
- Red (71%)
- Green (58%)
- Blue (44%)



- Red (71%)
- Yellow (71%)
- Blue (44%)



- Cyan (0%)
- Magenta (19%)
- Yellow (38%)
- Black (29%)




- Cyan (29%)
- Magenta (42%)
- Yellow (56%)

Brightness & Saturation Gradients

These gradients show how the RGB color 182, 147, 113 changes by changing the brightness by 10 percent. The first figure shows a shift by +10% for each color and the second figure -10%.

Similar to the brightness gradients but the following saturation gradients show a change of the RGB color 182, 147, 113 by changing the saturation by 10% instead.

 182, 147, 113


255, 255, 255

 239, 201, 165

 255, 229, 192

 255, 255, 220

 255, 255, 249

 182, 147, 113

 154, 121, 88

 128, 96, 65

 102, 73, 42

 76, 50, 21


 53, 29, 0


 29, 5, 0

 0, 0, 0

 182, 147, 113

 182, 138, 95

 182, 147, 113

 182, 156, 131


 182, 129, 77

 182, 165, 149

 182, 119, 58

 182, 175, 168

 182, 110, 40

 182, 184, 186

 182, 101, 22

 182, 193, 204

 182, 92, 4

 182, 202, 222

 182, 90, 0

 182, 212, 240

 182, 221, 255

 182, 230, 255

Harmonies

Analogous

The Analogous color harmony consists of three colors that are next to each other on the color wheel.



195, 141, 126



182, 147, 113



162, 154, 110

Triad

The Triadic color harmony groups three colors that are evenly spaced from another and form a triangle on the color wheel.



182, 147, 113



93, 166, 160



166, 145, 187

Complementary

The Complementary color scheme is a pair of colors which are on the opposite of each other on the color wheel.



182, 147, 113



113, 148, 182

Split Complementary

Split-complementary colors differ from the complementary color scheme. The scheme consists of three colors, the original color and two neighbors of the complement color.



137, 153, 196



182, 147, 113



89, 164, 181

Square

The Square scheme is like the rectangle color scheme, but the four colors are evenly spaced on the color wheel.



182, 147, 113



113, 164, 138



107, 160, 194



187, 139, 169

Rectangle

The Rectangle color scheme consists of four colors that form a rectangle on the color wheel.



182, 147, 113



146, 159, 115



107, 160, 194



157, 148, 191

Sweetspot

The Sweet Spot groups the original color and five complimentary colors.



182, 147, 113



237, 224, 211



182, 113, 149



120, 112, 104



247, 247, 247



120, 120, 120

Same Dimension

The Same Dimension uses a secret algorithm to generate beautiful new colors.



182, 147, 113



237, 183, 130



182, 181, 113



92, 87, 83



156, 77, 0



28, 14, 0

Inverse Universe

The Inverse Universe completely reimagines the original color for something new.



113, 148, 182



130, 185, 237



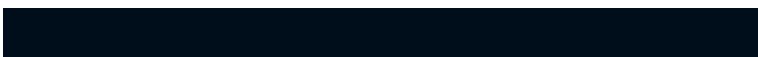
113, 114, 182



83, 87, 92



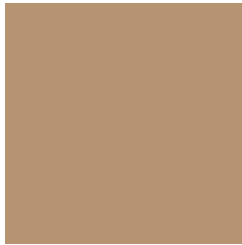
0, 79, 156



0, 14, 28

Previews

White Background



This preview shows how the RGB color 182, 147, 113 looks on a white background.

Color Contrast Check

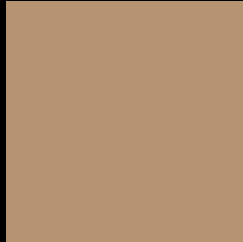
Large Text (above 18pt) WCAG AA × Fail

Any Text WCAG AA × Fail

Large Text (above 18pt) WCAG AAA × Fail

Any Text WCAG AAA × Fail

Black Background



This preview shows how the RGB color 182, 147, 113 looks on a black background.

Color Contrast Check

Large Text (above 18pt) WCAG AA ✓ Pass

Any Text WCAG AA ✓ Pass

Large Text (above 18pt) WCAG AAA ✓ Pass

Any Text WCAG AAA ✓ Pass

If you want to check with other color combinations, try the [Color Contrast Checker](#).

RGB 182, 147, 113 Background



This preview shows how black text looks on a background with the RGB color 182, 147, 113.



This preview shows how white text looks on a background with the RGB color 182, 147, 113.

Color Blindness Simulation

Color vision deficiency is a very complex topic, and I could not describe the different causes any better than Wikipedia does, so if you want to learn more, you should check out their [article about color blindness](#).

Dichromacy



Original Color

182, 147, 113

Protanopia

164, 153, 116

Deuteranopia

182, 147, 113



Tritanopia
186, 142, 153

Trichromacy



Original Color
182, 147, 113

Protanomaly
171, 151, 115

Deuteranomaly
182, 147, 113

Tritanomaly
185, 144, 138

Monochromacy



Original Color
182, 147, 113

Achromatopsia
154, 154, 154

Achromatomaly
164, 151, 139

CSS Examples

Text

The CSS property to change the color of the text to RGB 182, 147, 113 is called "color". The color property can be set on classes, ids or directly on the HTML element.

This example shows how text in the color `rgb(182, 147, 113)` looks like.

```
.text, #text, p{  
    color:rgb(182, 147, 113)  
}
```

If you want to add a text shadow in that color use the text-shadow property, you can generate a text shadow directly with our [CSS Text Shadow Generator](#).

Here you see how black text with a 4 pixel rgb(182, 147, 113) colored shadow looks like.

```
.shadow{ text-shadow: 4px 4px 2px rgb(182, 147, 113) }
```

Border

The CSS property to change the border of an element to RGB 182, 147, 113 is called "border". The border property can be set on classes, ids or directly on the HTML element.

This example shows the color as border, it can be applied via the CSS property "border" or "border-color".

```
.border, #border, table{ border:4px solid rgb(182, 147, 113) }
```

If only the border color should be changed use the property `border-color`.

```
.border{ border-color:rgb(182, 147, 113) }
```

If you want to add a box shadow in that color use:

Here you see how a box with a 4 pixel `rgb(182, 147, 113)` colored shadow looks like.

```
.boxshadow{ -moz-box-shadow:4px 4px 4px  
4px rgb(182, 147, 113); -webkit-box-  
shadow:4px 4px 4px 4px rgb(182, 147, 113);  
box-shadow:4px 4px 4px 4px rgb(182, 147,  
113) }
```

Background

The CSS property to change the background color of an element to RGB 182, 147, 113 is called "background". The background property can be set on classes, ids or directly on the HTML element.

```
.background, #background, body{  
background: rgb(182, 147, 113) }
```

If only the background color should be changed can be used:

```
.background{ background-color: rgb(182,  
147, 113) }
```

This example shows the color as background, it is applied via the CSS property "background".

To optimize and compress your CSS code, you can use our [online CSS compressor and optimizer](#) based on csstidy. If you want to create a linear or radial gradient as background or border, check our [CSS Gradient Generator](#).

Hey! You found this booklet interesting? Support Converting Colors with the new Membership Option!

The pro membership hides all ads, plus gives you double the colors in the color bucket, and more awesome pro features!

[Learn more, Memberships starting at \\$2.50/m!](#)

**Follow me
on Twitter!**

@ConvertingColor