

Converting Colors

RGB(182, 149, 118)

Have a look what the booklet for
RGB(182, 149, 118) contains.

| | |
|--|----|
| RGB(182, 149, 118) | 3 |
| <i>Conversions</i> | 4 |
| <i>Details</i> | 6 |
| <i>Harmonies</i> | 11 |
| <i>Previews</i> | 23 |
| <i>Color Blindness Simulation</i> | 26 |
| <i>CSS Examples</i> | 29 |

Color

RGB(182, 149, 118)

Conversions

Conversions Part 1

| Format | Color |
|---------------|--|
| Hex | B69576 |
| RGB | 182, 149, 118 |
| RGB Percent | 71%, 58%, 46% |
| CMY | 0.2863, 0.4157, 0.5373 |
| CMYK | 0.00, 0.18, 0.35, 0.29 |
| HSL | 29°, 30%, 59% |
| HSV | 29°, 35%, 71% |
| XYZ | 33.3089, 32.7480, 21.7050 |
| YIQ | 155.3330, 29.6190, -2.6450 |

Conversions

Conversions Part 2

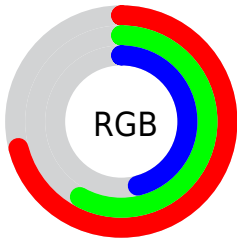
| Format | Color |
|-------------------------------------|--------------------------------|
| RYB | 182, 178, 118 |
| Decimal | 11965814 |
| CIELab | 63.96, 7.88, 21.02 |
| CIELCh | 64, 22.450, 69.464 |
| Yxy | 32.7480, 0.3795, 0.3731 |
| Android (android.graphics.Color) | 4290155894 (0xFFB69576) |
| YUV | 155.3330, -18.4052, 23.3870 |
| Hunter-Lab | 57.2259, 3.7524, 17.5702 |

Details

The RGB color **182, 149, 118** is a light color, and the websafe version is hex **CC9966**. A complement of this color would be **118, 151, 182**, and the grayscale version is **155, 155, 155**.

A 20% lighter version of the original color is **239, 203, 170**, and **128, 98, 69** is the 20% darker color. If you saturate the color by 10%, you get **182, 140, 100**, and if you desaturate by 10%, it is **182, 158, 136**.

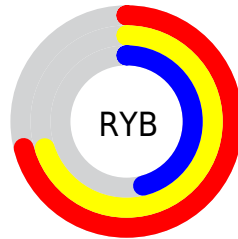
Distribution



Red (71%)

Green (58%)

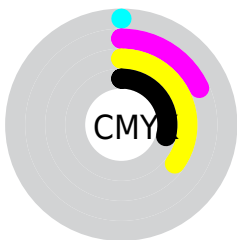
Blue (46%)



Red (71%)

Yellow (70%)

Blue (46%)

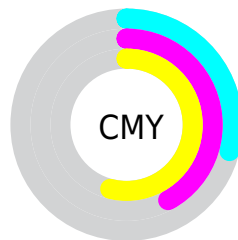


Cyan (0%)

Magenta (18%)

Yellow (35%)

Black (29%)



Cyan (29%)


Magenta (42%)

Yellow (54%)

Brightness & Saturation Gradients

These gradients show how the RGB color 182, 149, 118 changes by changing the brightness by 10 percent. The first figure shows a shift by +10% for each color and the second figure -10%.

Similar to the brightness gradients but the following saturation gradients show a change of the RGB color 182, 149, 118 by changing the saturation by 10% instead.

 182, 149, 118


255, 255, 255

 239, 203, 170


 255, 231, 198

 255, 255, 226

255, 255, 254

 182, 149, 118

 182, 140, 100

 182, 149, 118

 155, 123, 93

 128, 98, 69


 102, 75, 47


 77, 52, 25

 53, 31, 0

 30, 8, 0

 0, 0, 0

 182, 149, 118

 182, 158, 136


 182, 130, 82

 182, 168, 154


 182, 121, 63

 182, 177, 173

 182, 111, 45

 182, 187, 191

 182, 102, 27

 182, 196, 209

 182, 93, 9

 182, 205, 227

 182, 88, 0

 182, 215, 245

 182, 224, 255

 182, 233, 255

Harmonies

Analogous

The Analogous color harmony consists of three colors that are next to each other on the color wheel.



194, 143, 130



182, 149, 118



163, 156, 115

Triad

The Triadic color harmony groups three colors that are evenly spaced from another and form a triangle on the color wheel.



182, 149, 118



101, 166, 161



166, 148, 186

Complementary

The Complementary color scheme is a pair of colors which are on the opposite of each other on the color wheel.



182, 149, 118



118, 151, 182

Split Complementary

Split-complementary colors differ from the complementary color scheme. The scheme consists of three colors, the original color and two neighbors of the complement color.



139, 155, 194



182, 149, 118



98, 165, 180

Square

The Square scheme is like the rectangle color scheme, but the four colors are evenly spaced on the color wheel.



182, 149, 118



118, 165, 140



113, 161, 192



186, 142, 169

Rectangle

The Rectangle color scheme consists of four colors that form a rectangle on the color wheel.



182, 149, 118



149, 160, 120



113, 161, 192



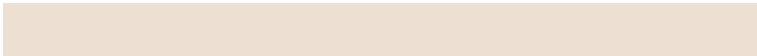
158, 150, 190

Sweetspot

The Sweet Spot groups the original color and five complimentary colors.



182, 149, 118



237, 224, 211



182, 118, 151



120, 112, 104



247, 247, 247



120, 120, 120

Same Dimension

The Same Dimension uses a secret algorithm to generate beautiful new colors.



182, 149, 118



237, 186, 138



182, 181, 118



92, 87, 83



156, 75, 0



28, 14, 0

Inverse Universe

The Inverse Universe completely reimagines the original color for something new.



118, 151, 182



138, 189, 237



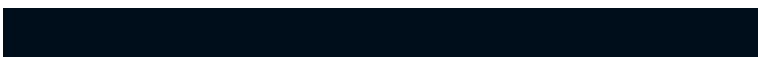
118, 119, 182



83, 87, 92



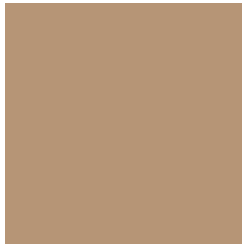
0, 80, 156



0, 14, 28

Previews

White Background



This preview shows how the RGB color 182, 149, 118 looks on a white background.

Color Contrast Check

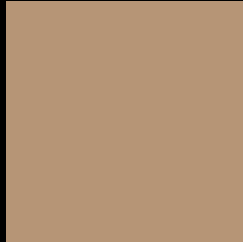
Large Text (above 18pt) WCAG AA × Fail

Any Text WCAG AA × Fail

Large Text (above 18pt) WCAG AAA × Fail

Any Text WCAG AAA × Fail

Black Background



This preview shows how the RGB color 182, 149, 118 looks on a black background.

Color Contrast Check

Large Text (above 18pt) WCAG AA ✓ Pass

Any Text WCAG AA ✓ Pass

Large Text (above 18pt) WCAG AAA ✓ Pass

Any Text WCAG AAA ✓ Pass

If you want to check with other color combinations, try the [Color Contrast Checker](#).

RGB 182, 149, 118 Background



This preview shows how black text looks on a background with the RGB color 182, 149, 118.



This preview shows how white text looks on a background with the RGB color 182, 149, 118.

Color Blindness Simulation

Color vision deficiency is a very complex topic, and I could not describe the different causes any better than Wikipedia does, so if you want to learn more, you should check out their [article about color blindness](#).

Dichromacy



Original Color

182, 149, 118

Protanopia

165, 155, 121

Deuteranopia

182, 149, 118



Tritanopia
186, 144, 155

Trichromacy



Original Color

182, 149, 118

Protanomaly

171, 153, 120

Deuteranomaly

182, 149, 118

Tritanomaly

185, 146, 142

Monochromacy



Original Color

182, 149, 118

Achromatopsia

155, 155, 155

Achromatomaly

165, 153, 142

CSS Examples

Text

The CSS property to change the color of the text to RGB 182, 149, 118 is called "color". The color property can be set on classes, ids or directly on the HTML element.

This example shows how text in the color `rgb(182, 149, 118)` looks like.

```
.text, #text, p{  
    color:rgb(182, 149, 118)  
}
```

If you want to add a text shadow in that color use the text-shadow property, you can generate a text shadow directly with our [CSS Text Shadow Generator](#).

Here you see how black text with a 4 pixel rgb(182, 149, 118) colored shadow looks like.

```
.shadow{ text-shadow: 4px 4px 2px rgb(182, 149, 118) }
```

Border

The CSS property to change the border of an element to RGB 182, 149, 118 is called "border". The border property can be set on classes, ids or directly on the HTML element.

This example shows the color as border, it can be applied via the CSS property "border" or "border-color".

```
.border, #border, table{ border:4px solid rgb(182, 149, 118) }
```

If only the border color should be changed use the property `border-color`.

```
.border{ border-color:rgb(182, 149, 118) }
```

If you want to add a box shadow in that color use:

Here you see how a box with a 4 pixel `rgb(182, 149, 118)` colored shadow looks like.

```
.boxshadow{ -moz-box-shadow:4px 4px 4px 4px rgb(182, 149, 118); -webkit-box-shadow:4px 4px 4px 4px rgb(182, 149, 118); box-shadow:4px 4px 4px 4px rgb(182, 149, 118) }
```

Background

The CSS property to change the background color of an element to RGB 182, 149, 118 is called "background". The background property can be set on classes, ids or directly on the HTML element.

```
.background, #background, body{  
background: rgb(182, 149, 118) }
```

If only the background color should be changed can be used:

```
.background{ background-color: rgb(182,  
149, 118) }
```

This example shows the color as background, it is applied via the CSS property "background".

To optimize and compress your CSS code, you can use our [online CSS compressor and optimizer](#) based on csstidy. If you want to create a linear or radial gradient as background or border, check our [CSS Gradient Generator](#).

Hey! You found this booklet interesting? Support Converting Colors with the new Membership Option!

The pro membership hides all ads, plus gives you double the colors in the color bucket, and more awesome pro features!

[Learn more, Memberships starting at \\$2.50/m!](#)

**Follow me
on Twitter!**

@ConvertingColor