

Converting Colors

RGB(183, 131, 141)

Have a look what the booklet for
RGB(183, 131, 141) contains.

RGB(183, 131, 141)	3
<i>Conversions</i>	4
<i>Details</i>	6
<i>Harmonies</i>	11
<i>Previews</i>	23
<i>Color Blindness Simulation</i>	26
<i>CSS Examples</i>	29

Color

RGB(183, 131, 141)

Conversions

Conversions Part 1

Format	Color
Hex	B7838D
RGB	183, 131, 141
RGB Percent	72%, 51%, 55%
CMY	0.2824, 0.4863, 0.4471
CMYK	0.00, 0.28, 0.23, 0.28
HSL	348°, 27%, 62%
HSV	348°, 28%, 72%
XYZ	32.4525, 28.2230, 28.9364
YIQ	147.6880, 27.7820, 14.1340

Conversions

Conversions Part 2

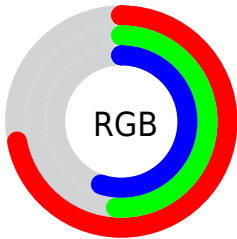
Format	Color
R_{YB}	183, 131, 141
Decimal	12026765
CIE _{Lab}	60.09, 21.49, 2.60
CIE _{LCh}	60, 21.652, 6.907
Yxy	28.2230, 0.3621, 0.3149
Android (android.graphics.Color)	4290216845 (0xFFB7838D)
YUV	147.6880, -3.2972, 30.9686
Hunter-Lab	53.1253, 16.0704, 4.8934

Details

The RGB color **183, 131, 141** is a light color, and the websafe version is hex **CC9999**. A complement of this color would be **131, 183, 173**, and the grayscale version is **148, 148, 148**.

A 20% lighter version of the original color is **240, 184, 195**, and **129, 81, 91** is the 20% darker color. If you saturate the color by 10%, you get **183, 113, 126**, and if you desaturate by 10%, it is **183, 149, 156**.

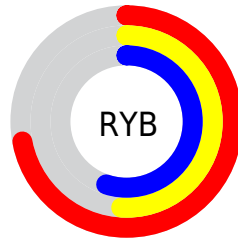
Distribution



Red (72%)

Green (51%)

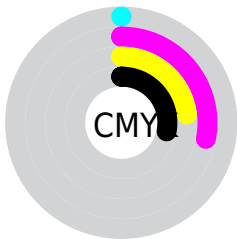
Blue (55%)



Red (72%)

Yellow (51%)

Blue (55%)

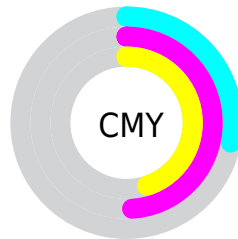


Cyan (0%)

Magenta (28%)

Yellow (23%)

Black (28%)



Cyan (28%)

Magenta (49%)

Yellow (45%)


Brightness & Saturation Gradients

These gradients show how the RGB color 183, 131, 141 changes by changing the brightness by 10 percent. The first figure shows a shift by +10% for each color and the second figure -10%.

Similar to the brightness gradients but the following saturation gradients show a change of the RGB color 183, 131, 141 by changing the saturation by 10% instead.

 183, 131, 141


255, 255, 255

 240, 184, 195

 255, 212, 222


 255, 241, 251

 183, 131, 141

 156, 106, 115

 129, 81, 91

 103, 57, 68

 78, 35, 45

 54, 13, 25

 35, 0, 1

 0, 0, 0

 183, 131, 141

 183, 113, 126

 183, 131, 141

 183, 149, 156

■ 183, 94, 111

■ 183, 168, 171

■ 183, 76, 97

■ 183, 186, 185

■ 183, 58, 82

■ 183, 204, 200

■ 183, 39, 67

■ 183, 222, 215

■ 183, 21, 52

■ 183, 241, 230

■ 183, 3, 38

■ 183, 255, 244

■ 183, 0, 35

■ 183, 255, 255

Harmonies

Analogous

The Analogous color harmony consists of three colors that are next to each other on the color wheel.



173, 133, 160



183, 131, 141



182, 133, 123

Triad

The Triadic color harmony groups three colors that are evenly spaced from another and form a triangle on the color wheel.



183, 131, 141



133, 151, 114



103, 151, 179

Complementary

The Complementary color scheme is a pair of colors which are on the opposite of each other on the color wheel.



183, 131, 141



131, 183, 173

Split Complementary

Split-complementary colors differ from the complementary color scheme. The scheme consists of three colors, the original color and two neighbors of the complement color.



90, 155, 167



183, 131, 141



112, 154, 129

Square

The Square scheme is like the rectangle color scheme, but the four colors are evenly spaced on the color wheel.



183, 131, 141



154, 145, 107



94, 156, 149



128, 145, 182

Rectangle

The Rectangle color scheme consists of four colors that form a rectangle on the color wheel.



183, 131, 141



176, 137, 114



94, 156, 149



97, 152, 176

Sweetspot

The Sweet Spot groups the original color and five complimentary colors.



183, 131, 141



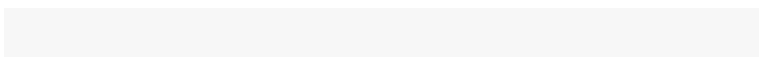
237, 216, 220



173, 131, 183



120, 107, 109



247, 247, 247



120, 120, 120

Same Dimension

The Same Dimension uses a secret algorithm to generate beautiful new colors.



183, 131, 141



237, 157, 172



183, 147, 131



92, 83, 84



156, 0, 30



28, 0, 5

Inverse Universe

The Inverse Universe completely reimagines the original color for something new.



183, 131, 141



237, 157, 172



131, 167, 183



92, 83, 84



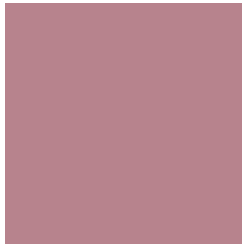
156, 0, 30



28, 0, 5

Previews

White Background



This preview shows how the RGB color 183, 131, 141 looks on a white background.

Color Contrast Check

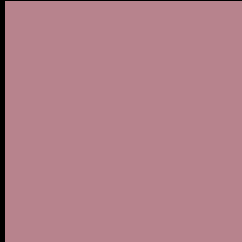
Large Text (above 18pt) WCAG AA ✓ Pass

Any Text WCAG AA ✗ Fail

Large Text (above 18pt) WCAG AAA ✗ Fail

Any Text WCAG AAA ✗ Fail

Black Background



This preview shows how the RGB color 183, 131, 141 looks on a black background.

Color Contrast Check

Large Text (above 18pt) WCAG AA ✓ Pass

Any Text WCAG AA ✓ Pass

Large Text (above 18pt) WCAG AAA ✓ Pass

Any Text WCAG AAA × Fail

If you want to check with other color combinations, try the [Color Contrast Checker](#).

RGB 183, 131, 141 Background



This preview shows how black text looks on a background with the RGB color 183, 131, 141.



This preview shows how white text looks on a background with the RGB color 183, 131, 141.

Color Blindness Simulation

Color vision deficiency is a very complex topic, and I could not describe the different causes any better than Wikipedia does, so if you want to learn more, you should check out their [article about color blindness](#).


Dichromacy



Original Color
183, 131, 141

Protanopia
147, 144, 149

Deuteranopia
161, 140, 139



Tritanopia
183, 131, 141

Trichromacy



Original Color

183, 131, 141

Protanomaly

160, 139, 146

Deuteranomaly

169, 137, 140

Tritanomaly

183, 131, 141

Monochromacy



Original Color

183, 131, 141

Achromatopsia

148, 148, 148

Achromatomaly

161, 142, 145

CSS Examples

Text

The CSS property to change the color of the text to RGB 183, 131, 141 is called "color". The color property can be set on classes, ids or directly on the HTML element.

This example shows how text in the color `rgb(183, 131, 141)` looks like.

```
.text, #text, p{  
    color:rgb(183, 131, 141)  
}
```

If you want to add a text shadow in that color use the text-shadow property, you can generate a text shadow directly with our [CSS Text Shadow Generator](#).

Here you see how black text with a 4 pixel rgb(183, 131, 141) colored shadow looks like.

```
.shadow{ text-shadow: 4px 4px 2px rgb(183, 131, 141) }
```

Border

The CSS property to change the border of an element to RGB 183, 131, 141 is called "border". The border property can be set on classes, ids or directly on the HTML element.

This example shows the color as border, it can be applied via the CSS property "border" or "border-color".

```
.border, #border, table{ border:4px solid rgb(183, 131, 141) }
```

If only the border color should be changed use the property `border-color`.

```
.border{ border-color:rgb(183, 131, 141) }
```

If you want to add a box shadow in that color use:

Here you see how a box with a 4 pixel `rgb(183, 131, 141)` colored shadow looks like.

```
.boxshadow{ -moz-box-shadow:4px 4px 4px  
4px rgb(183, 131, 141); -webkit-box-  
shadow:4px 4px 4px 4px rgb(183, 131, 141);  
box-shadow:4px 4px 4px 4px rgb(183, 131,  
141) }
```

Background

The CSS property to change the background color of an element to RGB 183, 131, 141 is called "background". The background property can be set on classes, ids or directly on the HTML element.

```
.background, #background, body{  
background: rgb(183, 131, 141) }
```

If only the background color should be changed can be used:

```
.background{ background-color: rgb(183,  
131, 141) }
```

This example shows the color as background, it is applied via the CSS property "background".

To optimize and compress your CSS code, you can use our [online CSS compressor and optimizer](#) based on csstidy. If you want to create a linear or radial gradient as background or border, check our [CSS Gradient Generator](#).

Hey! You found this booklet interesting? Support Converting Colors with the new Membership Option!

The pro membership hides all ads, plus gives you double the colors in the color bucket, and more awesome pro features!

[Learn more, Memberships starting at \\$2.50/m!](#)

**Follow me
on Twitter!**

@ConvertingColor