

Converting Colors

RGB(183, 139, 130)

Have a look what the booklet for
RGB(183, 139, 130) contains.

RGB(183, 139, 130)	3
<i>Conversions</i>	4
<i>Details</i>	6
<i>Harmonies</i>	11
<i>Previews</i>	23
<i>Color Blindness Simulation</i>	26
<i>CSS Examples</i>	29

Color

RGB(183, 139, 130)

Conversions

Conversions Part 1

Format	Color
Hex	B78B82
RGB	183, 139, 130
RGB Percent	72%, 55%, 51%
CMY	0.2824, 0.4549, 0.4902
CMYK	0.00, 0.24, 0.29, 0.28
HSL	10°, 27%, 61%
HSV	10°, 29%, 72%
XYZ	32.7903, 30.1442, 25.2093
YIQ	151.1300, 29.1130, 6.5290

Conversions

Conversions Part 2

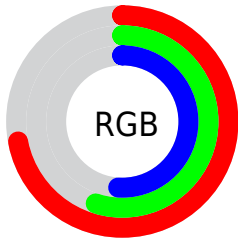
Format	Color
RYB	183, 141, 130
Decimal	12028802
CIELab	61.78, 15.42, 11.29
CIElCh	62, 19.115, 36.208
Yxy	30.1442, 0.3720, 0.3420
Android (android.graphics.Color)	4290218882 (0xFFB78B82)
YUV	151.1300, -10.4171, 27.9500
Hunter-Lab	54.9038, 10.5245, 11.2094

Details

The RGB color **183, 139, 130** is a light color, and the websafe version is hex **CC9999**. A complement of this color would be **130, 174, 183**, and the grayscale version is **151, 151, 151**.

A 20% lighter version of the original color is **240, 193, 183**, and **129, 89, 81** is the 20% darker color. If you saturate the color by 10%, you get **183, 124, 112**, and if you desaturate by 10%, it is **183, 154, 148**.

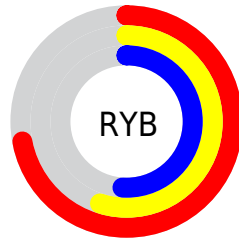
Distribution



Red (72%)

Green (55%)

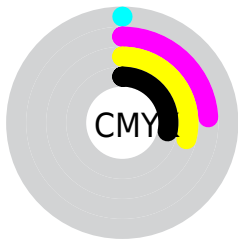
Blue (51%)



Red (72%)

Yellow (55%)

Blue (51%)

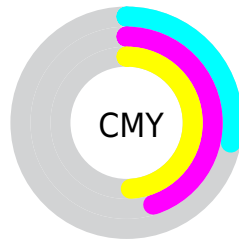


Cyan (0%)

Magenta (24%)

Yellow (29%)

Black (28%)



Cyan (28%)

Magenta (45%)

Yellow (49%)

Brightness & Saturation Gradients

These gradients show how the RGB color 183, 139, 130 changes by changing the brightness by 10 percent. The first figure shows a shift by +10% for each color and the second figure -10%.

Similar to the brightness gradients but the following saturation gradients show a change of the RGB color 183, 139, 130 by changing the saturation by 10% instead.

 183, 139, 130

255, 255, 255

 240, 193, 183

 255, 221, 211

 255, 249, 239


 183, 139, 130

 156, 113, 105

 129, 89, 81

 103, 65, 58

 78, 43, 36

 54, 22, 15

 33, 0, 0

 0, 0, 0

 183, 139, 130

 183, 124, 112

 183, 139, 130

 183, 154, 148

183, 109, 93

183, 169, 167

183, 93, 75

183, 185, 185

183, 78, 57

183, 200, 203

183, 63, 39

183, 215, 221

183, 48, 20

183, 230, 240

183, 33, 2

183, 245, 255

183, 31, 0

183, 255, 255

Harmonies

Analogous

The Analogous color harmony consists of three colors that are next to each other on the color wheel.



183, 137, 146



183, 139, 130



174, 144, 119

Triad

The Triadic color harmony groups three colors that are evenly spaced from another and form a triangle on the color wheel.



183, 139, 130



121, 158, 135



134, 150, 183

Complementary

The Complementary color scheme is a pair of colors which are on the opposite of each other on the color wheel.



183, 139, 130



130, 174, 183

Split Complementary

Split-complementary colors differ from the complementary color scheme. The scheme consists of three colors, the original color and two neighbors of the complement color.



113, 155, 180



183, 139, 130



106, 159, 152

Square

The Square scheme is like the rectangle color scheme, but the four colors are evenly spaced on the color wheel.



183, 139, 130



140, 154, 122



102, 158, 169



157, 144, 177

Rectangle

The Rectangle color scheme consists of four colors that form a rectangle on the color wheel.



183, 139, 130



164, 147, 116



102, 158, 169



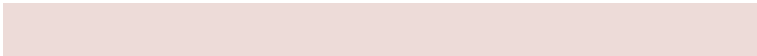
127, 151, 183

Sweetspot

The Sweet Spot groups the original color and five complimentary colors.



183, 139, 130



237, 219, 216



183, 130, 174



120, 109, 107



247, 247, 247



120, 120, 120

Same Dimension

The Same Dimension uses a secret algorithm to generate beautiful new colors.



183, 139, 130



237, 168, 154



183, 165, 130



92, 84, 83



156, 26, 0



28, 5, 0

Inverse Universe

The Inverse Universe completely reimagines the original color for something new.



130, 174, 183



154, 223, 237



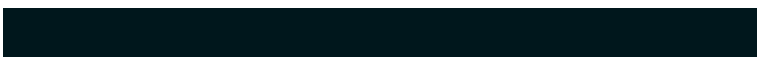
130, 148, 183



83, 90, 92



0, 129, 156



0, 23, 28

Previews

White Background



This preview shows how the RGB color 183, 139, 130 looks on a white background.

Color Contrast Check

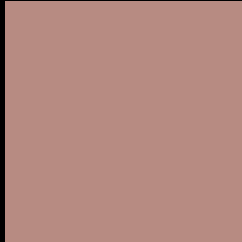
Large Text (above 18pt) WCAG AA × Fail

Any Text WCAG AA × Fail

Large Text (above 18pt) WCAG AAA × Fail

Any Text WCAG AAA × Fail

Black Background



This preview shows how the RGB color 183, 139, 130 looks on a black background.

Color Contrast Check

Large Text (above 18pt) WCAG AA ✓ Pass

Any Text WCAG AA ✓ Pass

Large Text (above 18pt) WCAG AAA ✓ Pass

Any Text WCAG AAA ✓ Pass

If you want to check with other color combinations, try the [Color Contrast Checker](#).

RGB 183, 139, 130 Background



This preview shows how black text looks on a background with the RGB color 183, 139, 130.

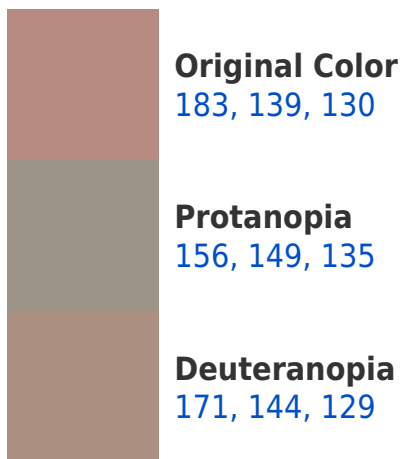



This preview shows how white text looks on a background with the RGB color 183, 139, 130.

Color Blindness Simulation

Color vision deficiency is a very complex topic, and I could not describe the different causes any better than Wikipedia does, so if you want to learn more, you should check out their [article about color blindness](#).

Dichromacy





Tritanopia
185, 136, 147

Trichromacy



Original Color
183, 139, 130

Protanomaly
166, 145, 133

Deuteranomaly
175, 142, 129

Tritanomaly
184, 137, 141

Monochromacy



Original Color
183, 139, 130

Achromatopsia
151, 151, 151

Achromatomaly
163, 147, 143

CSS Examples

Text

The CSS property to change the color of the text to RGB 183, 139, 130 is called "color". The color property can be set on classes, ids or directly on the HTML element.

This example shows how text in the color `rgb(183, 139, 130)` looks like.

```
.text, #text, p{  
    color:rgb(183, 139, 130)  
}
```

If you want to add a text shadow in that color use the text-shadow property, you can generate a text shadow directly with our [CSS Text Shadow Generator](#).

Here you see how black text with a 4 pixel rgb(183, 139, 130) colored shadow looks like.

```
.shadow{ text-shadow: 4px 4px 2px rgb(183, 139, 130) }
```

Border

The CSS property to change the border of an element to RGB 183, 139, 130 is called "border". The border property can be set on classes, ids or directly on the HTML element.

This example shows the color as border, it can be applied via the CSS property "border" or "border-color".

```
.border, #border, table{ border:4px solid rgb(183, 139, 130) }
```

If only the border color should be changed use the property `border-color`.

```
.border{ border-color:rgb(183, 139, 130) }
```

If you want to add a box shadow in that color use:

Here you see how a box with a 4 pixel `rgb(183, 139, 130)` colored shadow looks like.

```
.boxshadow{ -moz-box-shadow:4px 4px 4px  
4px rgb(183, 139, 130); -webkit-box-  
shadow:4px 4px 4px 4px rgb(183, 139, 130);  
box-shadow:4px 4px 4px 4px rgb(183, 139,  
130) }
```

Background

The CSS property to change the background color of an element to RGB 183, 139, 130 is called "background". The background property can be set on classes, ids or directly on the HTML element.

```
.background, #background, body{  
background: rgb(183, 139, 130) }
```

If only the background color should be changed can be used:

```
.background{ background-color: rgb(183,  
139, 130) }
```

This example shows the color as background, it is applied via the CSS property "background".

To optimize and compress your CSS code, you can use our [online CSS compressor and optimizer](#) based on csstidy. If you want to create a linear or radial gradient as background or border, check our [CSS Gradient Generator](#).

Hey! You found this booklet interesting? Support Converting Colors with the new Membership Option!

The pro membership hides all ads, plus gives you double the colors in the color bucket, and more awesome pro features!

[Learn more, Memberships starting at \\$2.50/m!](#)

**Follow me
on Twitter!**

@ConvertingColor