

Converting Colors

RGB(183, 149, 148)

Have a look what the booklet for
RGB(183, 149, 148) contains.

RGB(183, 149, 148)	3
<i>Conversions</i>	4
<i>Details</i>	6
<i>Harmonies</i>	11
<i>Previews</i>	23
<i>Color Blindness Simulation</i>	26
<i>CSS Examples</i>	29

Color

RGB(183, 149, 148)

Conversions

Conversions Part 1

Format	Color
Hex	B79594
RGB	183, 149, 148
RGB Percent	72%, 58%, 58%
CMY	0.2824, 0.4157, 0.4196
CMYK	0.00, 0.19, 0.19, 0.28
HSL	2°, 20%, 65%
HSV	2°, 19%, 72%
XYZ	35.6212, 33.7003, 32.6443
YIQ	159.0520, 20.5850, 6.8970

Conversions

Conversions Part 2

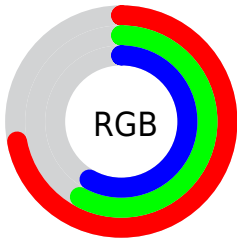
Format	Color
RYB	183, 149, 148
Decimal	12031380
CIELab	64.72, 12.54, 5.32
CIELCh	65, 13.624, 22.989
Yxy	33.7003, 0.3493, 0.3305
Android (android.graphics.Color)	4290221460 (0xFFB79594)
YUV	159.0520, -5.4486, 21.0024
Hunter-Lab	58.0520, 7.9382, 7.2958

Details

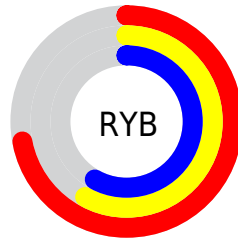
The RGB color **183, 149, 148** is a light color, and the websafe version is hex **CC9999**. A complement of this color would be **148, 182, 183**, and the grayscale version is **159, 159, 159**.

A 20% lighter version of the original color is **239, 203, 202**, and **129, 98, 97** is the 20% darker color. If you saturate the color by 10%, you get **183, 131, 130**, and if you desaturate by 10%, it is **183, 167, 166**.

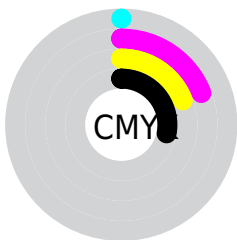
Distribution



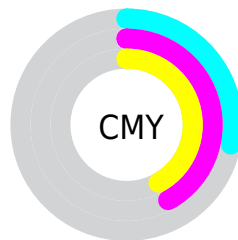
- Red (72%)
- Green (58%)
- Blue (58%)



- Red (72%)
- Yellow (58%)
- Blue (58%)



- Cyan (0%)
- Magenta (19%)
- Yellow (19%)
- Black (28%)



- Cyan (28%)
- Magenta (42%)
- Yellow (42%)

Brightness & Saturation Gradients

These gradients show how the RGB color 183, 149, 148 changes by changing the brightness by 10 percent. The first figure shows a shift by +10% for each color and the second figure -10%.

Similar to the brightness gradients but the following saturation gradients show a change of the RGB color 183, 149, 148 by changing the saturation by 10% instead.

 183, 149, 148

255, 255, 255

 239, 203, 202

 255, 231, 230

 183, 149, 148

 156, 123, 122

 129, 98, 97

 104, 74, 74

 79, 51, 51

 56, 30, 30


 35, 7, 5

 0, 0, 0

 183, 149, 148

 183, 131, 130

 183, 149, 148

 183, 167, 166

 183, 113, 111

 183, 185, 185

 183, 96, 93

 183, 202, 203

 183, 78, 75

 183, 220, 221

 183, 60, 57

 183, 238, 240

 183, 42, 38

 183, 255, 255

 183, 25, 20

 183, 7, 2

 183, 5, 0

Harmonies

Analogous

The Analogous color harmony consists of three colors that are next to each other on the color wheel.



180, 149, 160



183, 149, 148



179, 151, 138

Triad

The Triadic color harmony groups three colors that are evenly spaced from another and form a triangle on the color wheel.



183, 149, 148



143, 162, 142



140, 159, 181

Complementary

The Complementary color scheme is a pair of colors which are on the opposite of each other on the color wheel.



183, 149, 148



148, 182, 183

Split Complementary

Split-complementary colors differ from the complementary color scheme. The scheme consists of three colors, the original color and two neighbors of the complement color.



129, 162, 176



183, 149, 148



131, 164, 154

Square

The Square scheme is like the rectangle color scheme, but the four colors are evenly spaced on the color wheel.



183, 149, 148



157, 159, 135



126, 164, 166



156, 155, 179

Rectangle

The Rectangle color scheme consists of four colors that form a rectangle on the color wheel.



183, 149, 148



173, 154, 134



126, 164, 166



136, 160, 180

Sweetspot

The Sweet Spot groups the original color and five complimentary colors.



183, 149, 148



237, 223, 223



183, 148, 182



120, 112, 111



247, 247, 247



120, 120, 120

Same Dimension

The Same Dimension uses a secret algorithm to generate beautiful new colors.



183, 149, 148



237, 184, 183



183, 166, 148



92, 83, 83



156, 4, 0



28, 1, 0

Inverse Universe

The Inverse Universe completely reimagines the original color for something new.



148, 182, 183



183, 236, 237



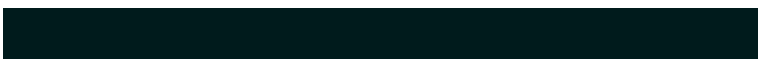
148, 165, 183



83, 92, 92



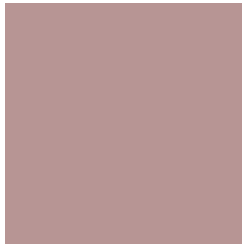
0, 151, 156



0, 27, 28

Previews

White Background



This preview shows how the RGB color 183, 149, 148 looks on a white background.

Color Contrast Check

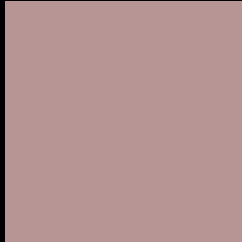
Large Text (above 18pt) WCAG AA × Fail

Any Text WCAG AA × Fail

Large Text (above 18pt) WCAG AAA × Fail

Any Text WCAG AAA × Fail

Black Background



This preview shows how the RGB color 183, 149, 148 looks on a black background.

Color Contrast Check

Large Text (above 18pt) WCAG AA ✓ Pass

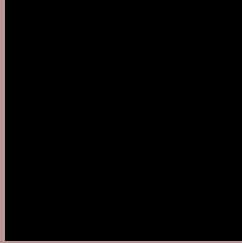
Any Text WCAG AA ✓ Pass

Large Text (above 18pt) WCAG AAA ✓ Pass

Any Text WCAG AAA ✓ Pass

If you want to check with other color combinations, try the [Color Contrast Checker](#).

RGB 183, 149, 148 Background



This preview shows how black text looks on a background with the RGB color 183, 149, 148.



This preview shows how white text looks on a background with the RGB color 183, 149, 148.

Color Blindness Simulation

Color vision deficiency is a very complex topic, and I could not describe the different causes any better than Wikipedia does, so if you want to learn more, you should check out their [article about color blindness](#).

Dichromacy



Original Color
183, 149, 148

Protanopia
161, 157, 152

Deuteranopia
176, 152, 147



Tritanopia
184, 147, 159

Trichromacy



Original Color
183, 149, 148

Protanomaly
169, 154, 151

Deuteranomaly
179, 151, 147

Tritanomaly
184, 148, 155

Monochromacy



Original Color
183, 149, 148

Achromatopsia
159, 159, 159

Achromatomaly
168, 155, 155

CSS Examples

Text

The CSS property to change the color of the text to RGB 183, 149, 148 is called "color". The color property can be set on classes, ids or directly on the HTML element.

This example shows how text in the color `rgb(183, 149, 148)` looks like.

```
.text, #text, p{  
    color:rgb(183, 149, 148)  
}
```

If you want to add a text shadow in that color use the text-shadow property, you can generate a text shadow directly with our [CSS Text Shadow Generator](#).

Here you see how black text with a 4 pixel rgb(183, 149, 148) colored shadow looks like.

```
.shadow{ text-shadow: 4px 4px 2px rgb(183, 149, 148) }
```

Border

The CSS property to change the border of an element to RGB 183, 149, 148 is called "border". The border property can be set on classes, ids or directly on the HTML element.

This example shows the color as border, it can be applied via the CSS property "border" or "border-color".

```
.border, #border, table{ border:4px solid rgb(183, 149, 148) }
```

If only the border color should be changed use the property `border-color`.

```
.border{ border-color:rgb(183, 149, 148) }
```

If you want to add a box shadow in that color use:

Here you see how a box with a 4 pixel `rgb(183, 149, 148)` colored shadow looks like.

```
.boxshadow{ -moz-box-shadow:4px 4px 4px  
4px rgb(183, 149, 148); -webkit-box-  
shadow:4px 4px 4px 4px rgb(183, 149, 148);  
box-shadow:4px 4px 4px 4px rgb(183, 149,  
148) }
```

Background

The CSS property to change the background color of an element to RGB 183, 149, 148 is called "background". The background property can be set on classes, ids or directly on the HTML element.

```
.background, #background, body{  
background: rgb(183, 149, 148) }
```

If only the background color should be changed can be used:

```
.background{ background-color: rgb(183,  
149, 148) }
```

This example shows the color as background, it is applied via the CSS property "background".

To optimize and compress your CSS code, you can use our [online CSS compressor and optimizer](#) based on csstidy. If you want to create a linear or radial gradient as background or border, check our [CSS Gradient Generator](#).

Hey! You found this booklet interesting? Support Converting Colors with the new Membership Option!

The pro membership hides all ads, plus gives you double the colors in the color bucket, and more awesome pro features!

[Learn more, Memberships starting at \\$2.50/m!](#)

**Follow me
on Twitter!**

@ConvertingColor