

Converting Colors

RGB(183, 152, 152)

Have a look what the booklet for
RGB(183, 152, 152) contains.

RGB(183, 152, 152)	3
<i>Conversions</i>	4
<i>Details</i>	6
<i>Harmonies</i>	11
<i>Previews</i>	23
<i>Color Blindness Simulation</i>	26
<i>CSS Examples</i>	29

Color

RGB(183, 152, 152)

Conversions

Conversions Part 1

Format	Color
Hex	B79898
RGB	183, 152, 152
RGB Percent	72%, 60%, 60%
CMY	0.2824, 0.4039, 0.4039
CMYK	0.00, 0.17, 0.17, 0.28
HSL	0°, 18%, 66%
HSV	0°, 17%, 72%
XYZ	36.4242, 34.7908, 34.5013
YIQ	161.2690, 18.4760, 6.5720

Conversions

Conversions Part 2

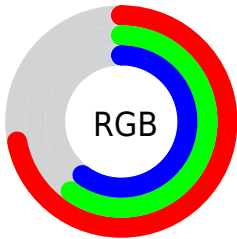
Format	Color
RYB	183, 152, 152
Decimal	12032152
CIELab	65.59, 11.52, 4.31
CIElCh	66, 12.299, 20.536
Yxy	34.7908, 0.3445, 0.3291
Android (android.graphics.Color)	4290222232 (0xFFB79898)
YUV	161.2690, -4.5696, 19.0581
Hunter-Lab	58.9837, 7.0076, 6.6081

Details

The RGB color **183, 152, 152** is a light color, and the websafe version is hex **CC9999**. A complement of this color would be **152, 183, 183**, and the grayscale version is **161, 161, 161**.

A 20% lighter version of the original color is **239, 206, 206**, and **130, 101, 101** is the 20% darker color. If you saturate the color by 10%, you get **183, 134, 134**, and if you desaturate by 10%, it is **183, 170, 170**.

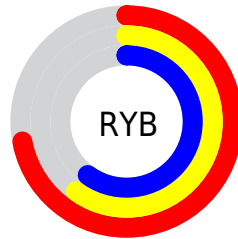
Distribution



Red (72%)

Green (60%)

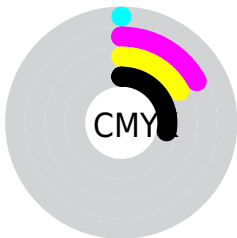
Blue (60%)



Red (72%)

Yellow (60%)

Blue (60%)

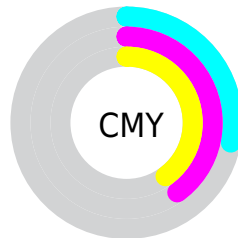


Cyan (0%)

Magenta (17%)

Yellow (17%)

Black (28%)



Cyan (28%)

Magenta (40%)

Yellow (40%)

Brightness & Saturation Gradients

These gradients show how the RGB color 183, 152, 152 changes by changing the brightness by 10 percent. The first figure shows a shift by +10% for each color and the second figure -10%.

Similar to the brightness gradients but the following saturation gradients show a change of the RGB color 183, 152, 152 by changing the saturation by 10% instead.

 183, 152, 152


255, 255, 255

 239, 206, 206


 255, 235, 234

 183, 152, 152

 156, 126, 126

 130, 101, 101

 104, 77, 77

 80, 54, 55

 56, 33, 33

 35, 11, 10

 0, 0, 0

 183, 152, 152

 183, 134, 134

 183, 152, 152

 183, 170, 170

 183, 115, 115

 183, 189, 189

 183, 97, 97

 183, 207, 207

 183, 79, 79

 183, 225, 225

 183, 61, 61

 183, 244, 244

 183, 42, 42

 183, 255, 255

 183, 24, 24

 183, 6, 6

 183, 0, 0

Harmonies

Analogous

The Analogous color harmony consists of three colors that are next to each other on the color wheel.



180, 152, 163



183, 152, 152



180, 154, 143

Triad

The Triadic color harmony groups three colors that are evenly spaced from another and form a triangle on the color wheel.



183, 152, 152



147, 164, 145



143, 161, 181

Complementary

The Complementary color scheme is a pair of colors which are on the opposite of each other on the color wheel.



183, 152, 152



152, 183, 183

Split Complementary

Split-complementary colors differ from the complementary color scheme. The scheme consists of three colors, the original color and two neighbors of the complement color.



134, 164, 176



183, 152, 152



137, 166, 155

Square

The Square scheme is like the rectangle color scheme, but the four colors are evenly spaced on the color wheel.



183, 152, 152



160, 161, 139



131, 166, 167



157, 158, 180

Rectangle

The Rectangle color scheme consists of four colors that form a rectangle on the color wheel.



183, 152, 152



175, 156, 139



131, 166, 167



139, 162, 180

Sweetspot

The Sweet Spot groups the original color and five complimentary colors.



183, 152, 152



237, 225, 225



183, 152, 183



120, 113, 113



247, 247, 247



120, 120, 120

Same Dimension

The Same Dimension uses a secret algorithm to generate beautiful new colors.



183, 152, 152



237, 190, 190



183, 168, 152



92, 83, 83



156, 0, 0



28, 0, 0

Inverse Universe

The Inverse Universe completely reimagines the original color for something new.



152, 183, 183



190, 237, 237



152, 168, 183



83, 92, 92



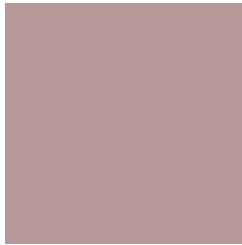
0, 156, 156



0, 28, 28

Previews

White Background



This preview shows how the RGB color 183, 152, 152 looks on a white background.

Color Contrast Check

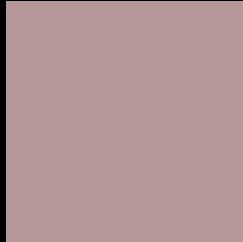
Large Text (above 18pt) WCAG AA × Fail

Any Text WCAG AA × Fail

Large Text (above 18pt) WCAG AAA × Fail

Any Text WCAG AAA × Fail

Black Background



This preview shows how the RGB color 183, 152, 152 looks on a black background.

Color Contrast Check

Large Text (above 18pt) WCAG AA ✓ Pass

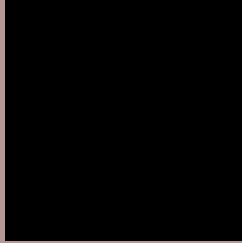
Any Text WCAG AA ✓ Pass

Large Text (above 18pt) WCAG AAA ✓ Pass

Any Text WCAG AAA ✓ Pass

If you want to check with other color combinations, try the [Color Contrast Checker](#).

RGB 183, 152, 152 Background



This preview shows how black text looks on a background with the RGB color 183, 152, 152.



This preview shows how white text looks on a background with the RGB color 183, 152, 152.

Color Blindness Simulation

Color vision deficiency is a very complex topic, and I could not describe the different causes any better than Wikipedia does, so if you want to learn more, you should check out their [article about color blindness](#).

Dichromacy



Original Color
183, 152, 152

Protanopia
163, 159, 156

Deuteranopia
178, 154, 152



Tritanopia
184, 150, 162

Trichromacy



Original Color
183, 152, 152

Protanomaly
170, 156, 155

Deuteranomaly
180, 153, 152

Tritanomaly
184, 151, 158

Monochromacy



Original Color
183, 152, 152

Achromatopsia
161, 161, 161

Achromatomaly
169, 158, 158

CSS Examples

Text

The CSS property to change the color of the text to RGB 183, 152, 152 is called "color". The color property can be set on classes, ids or directly on the HTML element.

This example shows how text in the color `rgb(183, 152, 152)` looks like.

```
.text, #text, p{  
    color:rgb(183, 152, 152)  
}
```

If you want to add a text shadow in that color use the text-shadow property, you can generate a text shadow directly with our [CSS Text Shadow Generator](#).

Here you see how black text with a 4 pixel rgb(183, 152, 152) colored shadow looks like.

```
.shadow{ text-shadow: 4px 4px 2px rgb(183, 152, 152) }
```

Border

The CSS property to change the border of an element to RGB 183, 152, 152 is called "border". The border property can be set on classes, ids or directly on the HTML element.

This example shows the color as border, it can be applied via the CSS property "border" or "border-color".

```
.border, #border, table{ border:4px solid rgb(183, 152, 152) }
```

If only the border color should be changed use the property `border-color`.

```
.border{ border-color:rgb(183, 152, 152) }
```

If you want to add a box shadow in that color use:

Here you see how a box with a 4 pixel `rgb(183, 152, 152)` colored shadow looks like.

```
.boxshadow{ -moz-box-shadow:4px 4px 4px  
4px rgb(183, 152, 152); -webkit-box-  
shadow:4px 4px 4px 4px rgb(183, 152, 152);  
box-shadow:4px 4px 4px 4px rgb(183, 152,  
152) }
```

Background

The CSS property to change the background color of an element to RGB 183, 152, 152 is called "background". The background property can be set on classes, ids or directly on the HTML element.

```
.background, #background, body{  
background: rgb(183, 152, 152) }
```

If only the background color should be changed can be used:

```
.background{ background-color: rgb(183,  
152, 152) }
```

This example shows the color as background, it is applied via the CSS property "background".

To optimize and compress your CSS code, you can use our [online CSS compressor and optimizer](#) based on csstidy. If you want to create a linear or radial gradient as background or border, check our [CSS Gradient Generator](#).

Hey! You found this booklet interesting? Support Converting Colors with the new Membership Option!

The pro membership hides all ads, plus gives you double the colors in the color bucket, and more awesome pro features!

[Learn more, Memberships starting at \\$2.50/m!](#)

**Follow me
on Twitter!**

@ConvertingColor