

Converting Colors

RGB(184, 156, 134)

Have a look what the booklet for
RGB(184, 156, 134) contains.

RGB(184, 156, 134)	3
<i>Conversions</i>	4
<i>Details</i>	6
<i>Harmonies</i>	11
<i>Previews</i>	23
<i>Color Blindness Simulation</i>	26
<i>CSS Examples</i>	29

Color

RGB(184, 156, 134)

Conversions

Conversions Part 1

Format	Color
Hex	B89C86
RGB	184, 156, 134
RGB Percent	72%, 61%, 53%
CMY	0.2784, 0.3882, 0.4745
CMYK	0.00, 0.15, 0.27, 0.28
HSL	26°, 26%, 62%
HSV	26°, 27%, 72%
XYZ	35.9587, 35.6885, 27.5476
YIQ	161.8640, 23.7500, -0.9060

Conversions

Conversions Part 2

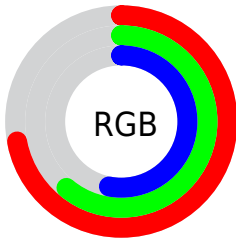
Format	Color
RYB	184, 173, 134
Decimal	12098694
CIELab	66.28, 6.96, 15.37
CIElCh	66, 16.874, 65.623
Yxy	35.6885, 0.3625, 0.3598
Android (android.graphics.Color)	4290288774 (0xFFB89C86)
YUV	161.8640, -13.7370, 19.4133
Hunter-Lab	59.7399, 2.8982, 14.4777

Details

The RGB color **184, 156, 134** is a light color, and the websafe version is hex **CC9999**. A complement of this color would be **134, 162, 184**, and the grayscale version is **162, 162, 162**.

A 20% lighter version of the original color is **241, 210, 187**, and **130, 105, 84** is the 20% darker color. If you saturate the color by 10%, you get **184, 146, 116**, and if you desaturate by 10%, it is **184, 166, 152**.

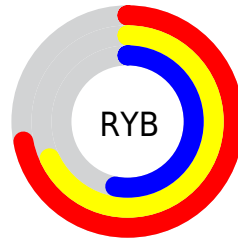
Distribution



Red (72%)

Green (61%)

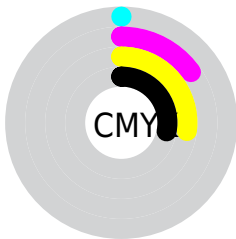
Blue (53%)



Red (72%)

Yellow (68%)

Blue (53%)

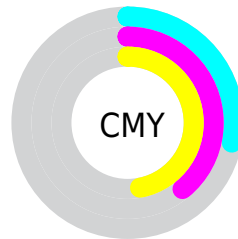


Cyan (0%)

Magenta (15%)

Yellow (27%)

Black (28%)



Cyan (28%)


Magenta (39%)

Yellow (47%)

Brightness & Saturation Gradients

These gradients show how the RGB color 184, 156, 134 changes by changing the brightness by 10 percent. The first figure shows a shift by +10% for each color and the second figure -10%.

Similar to the brightness gradients but the following saturation gradients show a change of the RGB color 184, 156, 134 by changing the saturation by 10% instead.

 184, 156, 134


255, 255, 255


 241, 210, 187

 255, 239, 215


 255, 255, 243

 184, 156, 134

 157, 130, 109

 130, 105, 84


 105, 81, 61


 80, 58, 39

 56, 36, 19


 34, 16, 0

 0, 0, 0

 184, 156, 134

 184, 146, 116

 184, 156, 134

 184, 166, 152

 184, 135, 97

 184, 177, 171

 184, 125, 79

 184, 187, 189

 184, 115, 60

 184, 197, 208

 184, 104, 42

 184, 208, 226

 184, 94, 24

 184, 218, 244

 184, 84, 5

 184, 228, 255

 184, 81, 0

 184, 238, 255

 184, 249, 255

Harmonies

Analogous

The Analogous color harmony consists of three colors that are next to each other on the color wheel.



192, 152, 144



184, 156, 134



170, 161, 131

Triad

The Triadic color harmony groups three colors that are evenly spaced from another and form a triangle on the color wheel.



184, 156, 134



124, 170, 164



168, 156, 186

Complementary

The Complementary color scheme is a pair of colors which are on the opposite of each other on the color wheel.



184, 156, 134



134, 162, 184

Split Complementary

Split-complementary colors differ from the complementary color scheme. The scheme consists of three colors, the original color and two neighbors of the complement color.



148, 161, 191



184, 156, 134



121, 169, 178

Square

The Square scheme is like the rectangle color scheme, but the four colors are evenly spaced on the color wheel.



184, 156, 134



136, 169, 148



130, 166, 188



183, 152, 174

Rectangle

The Rectangle color scheme consists of four colors that form a rectangle on the color wheel.



184, 156, 134



159, 164, 134



130, 166, 188



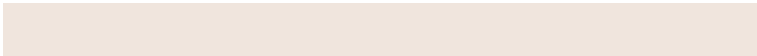
161, 158, 188

Sweetspot

The Sweet Spot groups the original color and five complimentary colors.



184, 156, 134



240, 229, 221



184, 134, 162



120, 113, 108



247, 247, 247



120, 120, 120

Same Dimension

The Same Dimension uses a secret algorithm to generate beautiful new colors.



184, 156, 134



240, 195, 161



184, 181, 134



92, 87, 83



156, 68, 0



28, 12, 0

Inverse Universe

The Inverse Universe completely reimagines the original color for something new.



134, 162, 184



161, 205, 240



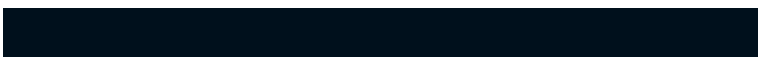
134, 137, 184



83, 88, 92



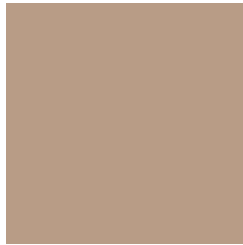
0, 87, 156



0, 16, 28

Previews

White Background



This preview shows how the RGB color 184, 156, 134 looks on a white background.

Color Contrast Check

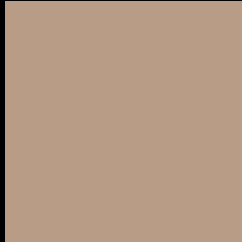
Large Text (above 18pt) WCAG AA × Fail

Any Text WCAG AA × Fail

Large Text (above 18pt) WCAG AAA × Fail

Any Text WCAG AAA × Fail

Black Background



This preview shows how the RGB color 184, 156, 134 looks on a black background.

Color Contrast Check

Large Text (above 18pt) WCAG AA ✓ Pass

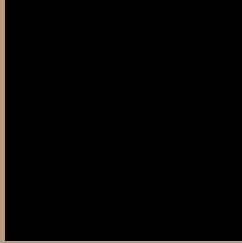
Any Text WCAG AA ✓ Pass

Large Text (above 18pt) WCAG AAA ✓ Pass

Any Text WCAG AAA ✓ Pass

If you want to check with other color combinations, try the [Color Contrast Checker](#).

RGB 184, 156, 134 Background



This preview shows how black text looks on a background with the RGB color 184, 156, 134.



This preview shows how white text looks on a background with the RGB color 184, 156, 134.

Color Blindness Simulation

Color vision deficiency is a very complex topic, and I could not describe the different causes any better than Wikipedia does, so if you want to learn more, you should check out their [article about color blindness](#).


Dichromacy



Original Color
184, 156, 134

Protanopia
170, 161, 136

Deuteranopia
186, 155, 134



Tritanopia
187, 152, 164

Trichromacy



Original Color

184, 156, 134

Protanomaly

175, 159, 135

Deuteranomaly

185, 155, 134

Tritanomaly

186, 153, 153

Monochromacy



Original Color

184, 156, 134

Achromatopsia

162, 162, 162

Achromatomaly

170, 160, 152

CSS Examples

Text

The CSS property to change the color of the text to RGB 184, 156, 134 is called "color". The color property can be set on classes, ids or directly on the HTML element.

This example shows how text in the color rgb(184, 156, 134) looks like.

```
.text, #text, p{  
    color:rgb(184, 156, 134)  
}
```

If you want to add a text shadow in that color use the text-shadow property, you can generate a text shadow directly with our [CSS Text Shadow Generator](#).

Here you see how black text with a 4 pixel rgb(184, 156, 134) colored shadow looks like.

```
.shadow{ text-shadow: 4px 4px 2px rgb(184, 156, 134) }
```

Border

The CSS property to change the border of an element to RGB 184, 156, 134 is called "border". The border property can be set on classes, ids or directly on the HTML element.

This example shows the color as border, it can be applied via the CSS property "border" or "border-color".

```
.border, #border, table{ border:4px solid rgb(184, 156, 134) }
```

If only the border color should be changed use the property `border-color`.

```
.border{ border-color:rgb(184, 156, 134) }
```

If you want to add a box shadow in that color use:

Here you see how a box with a 4 pixel `rgb(184, 156, 134)` colored shadow looks like.

```
.boxshadow{ -moz-box-shadow:4px 4px 4px  
4px rgb(184, 156, 134); -webkit-box-  
shadow:4px 4px 4px 4px rgb(184, 156, 134);  
box-shadow:4px 4px 4px 4px rgb(184, 156,  
134) }
```

Background

The CSS property to change the background color of an element to RGB 184, 156, 134 is called "background". The background property can be set on classes, ids or directly on the HTML element.

```
.background, #background, body{  
background: rgb(184, 156, 134) }
```

If only the background color should be changed can be used:

```
.background{ background-color: rgb(184,  
156, 134) }
```

This example shows the color as background, it is applied via the CSS property "background".

To optimize and compress your CSS code, you can use our [online CSS compressor and optimizer](#) based on csstidy. If you want to create a linear or radial gradient as background or border, check our [CSS Gradient Generator](#).

Hey! You found this booklet interesting? Support Converting Colors with the new Membership Option!

The pro membership hides all ads, plus gives you double the colors in the color bucket, and more awesome pro features!

[Learn more, Memberships starting at \\$2.50/m!](#)

**Follow me
on Twitter!**

@ConvertingColor