

Converting Colors

RGB(184, 157, 156)

Have a look what the booklet for
RGB(184, 157, 156) contains.

| | |
|------------------------------------------------|----|
| RGB(184, 157, 156) | 3 |
| <i>Conversions</i> | 4 |
| <i>Details</i> | 6 |
| <i>Harmonies</i> | 11 |
| <i>Previews</i> | 23 |
| <i>Color Blindness Simulation</i> | 26 |
| <i>CSS Examples</i> | 29 |

Color

RGB(184, 157, 156)

Conversions

Conversions Part 1

| Format | Color |
|-------------|---------------------------|
| Hex | B89D9C |
| RGB | 184, 157, 156 |
| RGB Percent | 72%, 62%, 61% |
| CMY | 0.2784, 0.3843, 0.3882 |
| CMYK | 0.00, 0.15, 0.15, 0.28 |
| HSL | 2°, 16%, 67% |
| HSV | 2°, 15%, 72% |
| XYZ | 37.8249, 36.7046, 36.5436 |
| YIQ | 164.9590, 16.4130, 5.4130 |

Conversions

Conversions Part 2

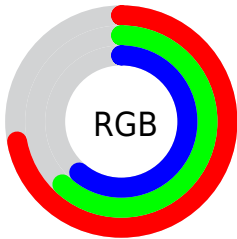
| Format | Color |
|-------------------------------------|--------------------------------------------------------------|
| RYB | 184, 157, 156 |
| Decimal | 12098972 |
| CIELab | 67.05, 9.78, 4.21 |
| CIELCh | 67, 10.648, 23.283 |
| Yxy | 36.7046, 0.3405, 0.3305 |
| Android (android.graphics.Color) | 4290289052 (0xFFB89D9C) |
| YUV | 164.9590, -4.4168, 16.6990 |
| Hunter-Lab | 60.5843, 5.4212, 6.6461 |

Details

The RGB color **184, 157, 156** is a light color, and the websafe version is hex **CC9999**. A complement of this color would be **156, 183, 184**, and the grayscale version is **165, 165, 165**.

A 20% lighter version of the original color is **240, 212, 210**, and **131, 106, 105** is the 20% darker color. If you saturate the color by 10%, you get **184, 139, 138**, and if you desaturate by 10%, it is **184, 175, 174**.

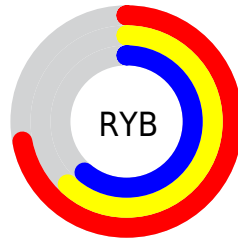
Distribution



Red (72%)

Green (62%)

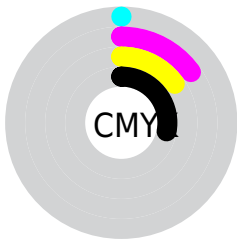
Blue (61%)



Red (72%)

Yellow (62%)

Blue (61%)

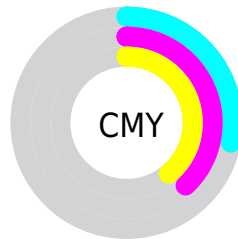


Cyan (0%)

Magenta (15%)

Yellow (15%)

Black (28%)



Cyan (28%)


Magenta (38%)

Yellow (39%)

Brightness & Saturation Gradients

These gradients show how the RGB color 184, 157, 156 changes by changing the brightness by 10 percent. The first figure shows a shift by +10% for each color and the second figure -10%.

Similar to the brightness gradients but the following saturation gradients show a change of the RGB color 184, 157, 156 by changing the saturation by 10% instead.


 184, 157, 156


255, 255, 255

 240, 212, 210


 255, 240, 239

 184, 157, 156

 157, 131, 130

 131, 106, 105

 105, 81, 81

 81, 58, 58

 57, 37, 36

 36, 16, 15


 0, 0, 0

 184, 157, 156


 184, 139, 138

 184, 157, 156

 184, 175, 174

 184, 122, 119

 184, 192, 193

 184, 104, 101

 184, 210, 211

 184, 86, 82

 184, 228, 230

 184, 68, 64

 184, 246, 248

 184, 51, 46

 184, 255, 255

 184, 33, 27

 184, 15, 9

 184, 7, 0

Harmonies

Analogous

The Analogous color harmony consists of three colors that are next to each other on the color wheel.



182, 157, 166



184, 157, 156



181, 159, 148

Triad

The Triadic color harmony groups three colors that are evenly spaced from another and form a triangle on the color wheel.



184, 157, 156



152, 167, 152



151, 165, 182

Complementary

The Complementary color scheme is a pair of colors which are on the opposite of each other on the color wheel.



184, 157, 156



156, 183, 184

Split Complementary

Split-complementary colors differ from the complementary color scheme. The scheme consists of three colors, the original color and two neighbors of the complement color.



142, 167, 178



184, 157, 156



143, 169, 161

Square

The Square scheme is like the rectangle color scheme, but the four colors are evenly spaced on the color wheel.



184, 157, 156



163, 165, 146



139, 169, 170



162, 161, 181

Rectangle

The Rectangle color scheme consists of four colors that form a rectangle on the color wheel.



184, 157, 156



176, 161, 145



139, 169, 170



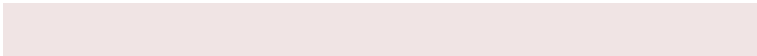
147, 166, 181

Sweetspot

The Sweet Spot groups the original color and five complimentary colors.



184, 157, 156



240, 228, 228



184, 156, 183



120, 113, 113



247, 247, 247



120, 120, 120

Same Dimension

The Same Dimension uses a secret algorithm to generate beautiful new colors.



184, 157, 156



240, 198, 197



184, 171, 156



92, 83, 83



156, 6, 0



28, 1, 0

Inverse Universe

The Inverse Universe completely reimagines the original color for something new.



156, 183, 184



197, 238, 240



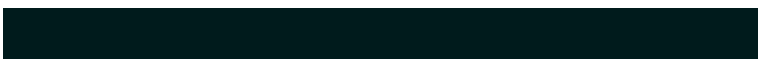
156, 169, 184



83, 91, 92



0, 150, 156



0, 27, 28

Previews

White Background



This preview shows how the RGB color 184, 157, 156 looks on a white background.

Color Contrast Check

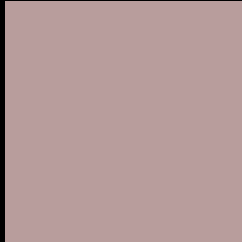
Large Text (above 18pt) WCAG AA × Fail

Any Text WCAG AA × Fail

Large Text (above 18pt) WCAG AAA × Fail

Any Text WCAG AAA × Fail

Black Background



This preview shows how the RGB color 184, 157, 156 looks on a black background.

Color Contrast Check

Large Text (above 18pt) WCAG AA ✓ Pass

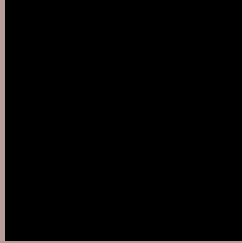
Any Text WCAG AA ✓ Pass

Large Text (above 18pt) WCAG AAA ✓ Pass

Any Text WCAG AAA ✓ Pass

If you want to check with other color combinations, try the [Color Contrast Checker](#).

RGB 184, 157, 156 Background



This preview shows how black text looks on a background with the RGB color 184, 157, 156.



This preview shows how white text looks on a background with the RGB color 184, 157, 156.

Color Blindness Simulation

Color vision deficiency is a very complex topic, and I could not describe the different causes any better than Wikipedia does, so if you want to learn more, you should check out their [article about color blindness](#).


Dichromacy



Original Color
184, 157, 156

Protanopia
167, 163, 159

Deuteranopia
182, 158, 156



Tritanopia
185, 155, 167

Trichromacy



Original Color
184, 157, 156

Protanomaly
173, 161, 158

Deuteranomaly
183, 158, 156

Tritanomaly
185, 156, 163

Monochromacy



Original Color
184, 157, 156

Achromatopsia
165, 165, 165

Achromatomaly
172, 162, 162

CSS Examples

Text

The CSS property to change the color of the text to RGB 184, 157, 156 is called "color". The color property can be set on classes, ids or directly on the HTML element.

This example shows how text in the color rgb(184, 157, 156) looks like.

```
.text, #text, p{  
    color:rgb(184, 157, 156)  
}
```

If you want to add a text shadow in that color use the text-shadow property, you can generate a text shadow directly with our [CSS Text Shadow Generator](#).

Here you see how black text with a 4 pixel rgb(184, 157, 156) colored shadow looks like.

```
.shadow{ text-shadow: 4px 4px 2px rgb(184, 157, 156) }
```

Border

The CSS property to change the border of an element to RGB 184, 157, 156 is called "border". The border property can be set on classes, ids or directly on the HTML element.

This example shows the color as border, it can be applied via the CSS property "border" or "border-color".

```
.border, #border, table{ border:4px solid rgb(184, 157, 156) }
```

If only the border color should be changed use the property border-color.

```
.border{ border-color:rgb(184, 157, 156) }
```

If you want to add a box shadow in that color use:

Here you see how a box with a 4 pixel rgb(184, 157, 156) colored shadow looks like.

```
.boxshadow{ -moz-box-shadow:4px 4px 4px  
4px rgb(184, 157, 156); -webkit-box-  
shadow:4px 4px 4px 4px rgb(184, 157, 156);  
box-shadow:4px 4px 4px 4px rgb(184, 157,  
156) }
```

Background

The CSS property to change the background color of an element to RGB 184, 157, 156 is called "background". The background property can be set on classes, ids or directly on the HTML element.

```
.background, #background, body{  
background: rgb(184, 157, 156) }
```

If only the background color should be changed can be used:

```
.background{ background-color: rgb(184,  
157, 156) }
```

This example shows the color as background, it is applied via the CSS property "background".

To optimize and compress your CSS code, you can use our [online CSS compressor and optimizer](#) based on csstidy. If you want to create a linear or radial gradient as background or border, check our [CSS Gradient Generator](#).

Hey! You found this booklet interesting? Support Converting Colors with the new Membership Option!

The pro membership hides all ads, plus gives you double the colors in the color bucket, and more awesome pro features!

[Learn more, Memberships starting at \\$2.50/m!](#)

**Follow me
on Twitter!**

@ConvertingColor