

Converting Colors

RGB(185, 130, 133)

Have a look what the booklet for
RGB(185, 130, 133) contains.

RGB(185, 130, 133)	3
<i>Conversions</i>	4
<i>Details</i>	6
<i>Harmonies</i>	11
<i>Previews</i>	23
<i>Color Blindness Simulation</i>	26
<i>CSS Examples</i>	29

Color

RGB(185, 130, 133)

Conversions

Conversions Part 1

Format	Color
Hex	B98285
RGB	185, 130, 133
RGB Percent	73%, 51%, 52%
CMY	0.2745, 0.4902, 0.4784
CMYK	0.00, 0.30, 0.28, 0.27
HSL	357°, 28%, 62%
HSV	357°, 30%, 73%
XYZ	32.2239, 27.9730, 25.8912
YIQ	146.7870, 31.8170, 12.5930

Conversions

Conversions Part 2

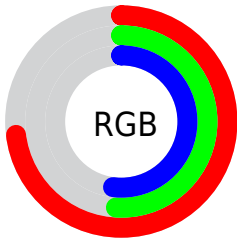
Format	Color
RYB	185, 130, 133
Decimal	12157573
CIELab	59.86, 21.64, 6.89
CIElCh	60, 22.715, 17.668
Yxy	27.9730, 0.3743, 0.3249
Android (android.graphics.Color)	4290347653 (0xFFB98285)
YUV	146.7870, -6.7970, 33.5128
Hunter-Lab	52.8895, 16.1976, 7.9982

Details

The RGB color **185, 130, 133** is a light color, and the websafe version is hex **CC9999**. A complement of this color would be **130, 185, 182**, and the grayscale version is **147, 147, 147**.

A 20% lighter version of the original color is **242, 183, 186**, and **131, 80, 84** is the 20% darker color. If you saturate the color by 10%, you get **185, 112, 116**, and if you desaturate by 10%, it is **185, 149, 150**.

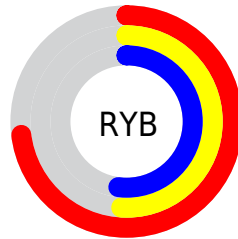
Distribution



Red (73%)

Green (51%)

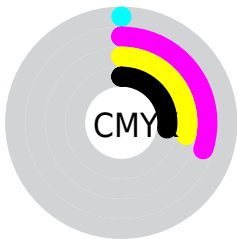
Blue (52%)



Red (73%)

Yellow (51%)

Blue (52%)

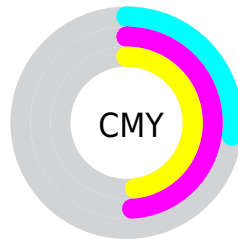


Cyan (0%)

Magenta (30%)

Yellow (28%)

Black (27%)



Cyan (27%)


Magenta (49%)

Yellow (48%)

Brightness & Saturation Gradients

These gradients show how the RGB color 185, 130, 133 changes by changing the brightness by 10 percent. The first figure shows a shift by +10% for each color and the second figure -10%.

Similar to the brightness gradients but the following saturation gradients show a change of the RGB color 185, 130, 133 by changing the saturation by 10% instead.

 185, 130, 133

255, 255, 255


 242, 183, 186

 255, 211, 214

 255, 240, 242

 185, 130, 133

 157, 105, 108

 131, 80, 84

 104, 57, 61

 79, 34, 39

 55, 12, 18

 35, 0, 1

 0, 0, 0

 185, 130, 133

 185, 112, 116

 185, 130, 133

 185, 149, 150

 185, 93, 98

 185, 167, 168

 185, 74, 81

 185, 186, 185

 185, 56, 63

 185, 204, 203

 185, 38, 46

 185, 222, 220

 185, 19, 28

 185, 241, 238

 185, 1, 11

 185, 255, 255

 185, 0, 10

Harmonies

Analogous

The Analogous color harmony consists of three colors that are next to each other on the color wheel.



179, 131, 153



185, 130, 133



180, 134, 116

Triad

The Triadic color harmony groups three colors that are evenly spaced from another and form a triangle on the color wheel.



185, 130, 133



124, 152, 117



108, 149, 183

Complementary

The Complementary color scheme is a pair of colors which are on the opposite of each other on the color wheel.



185, 130, 133



130, 185, 182

Split Complementary

Split-complementary colors differ from the complementary color scheme. The scheme consists of three colors, the original color and two neighbors of the complement color.



88, 153, 173



185, 130, 133



102, 155, 135

Square

The Square scheme is like the rectangle color scheme, but the four colors are evenly spaced on the color wheel.



185, 130, 133



147, 147, 106



87, 155, 156



136, 142, 182

Rectangle

The Rectangle color scheme consists of four colors that form a rectangle on the color wheel.



185, 130, 133



172, 138, 108



87, 155, 156



100, 150, 181

Sweetspot

The Sweet Spot groups the original color and five complimentary colors.



185, 130, 133



240, 218, 219



181, 130, 185



120, 107, 107



247, 247, 247



120, 120, 120

Same Dimension

The Same Dimension uses a secret algorithm to generate beautiful new colors.



185, 130, 133



240, 153, 158



185, 154, 130



92, 83, 83



156, 0, 8



28, 0, 2

Inverse Universe

The Inverse Universe completely reimagines the original color for something new.



185, 130, 133



240, 153, 158



130, 161, 185



92, 83, 83



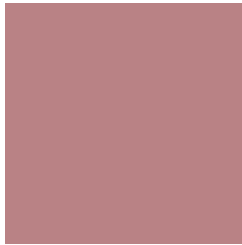
156, 0, 8



28, 0, 2

Previews

White Background



This preview shows how the RGB color 185, 130, 133 looks on a white background.

Color Contrast Check

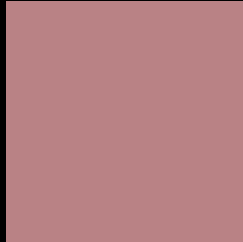
Large Text (above 18pt) WCAG AA ✓ Pass

Any Text WCAG AA ✗ Fail

Large Text (above 18pt) WCAG AAA ✗ Fail

Any Text WCAG AAA ✗ Fail

Black Background



This preview shows how the RGB color 185, 130, 133 looks on a black background.

Color Contrast Check

Large Text (above 18pt) WCAG AA ✓ Pass

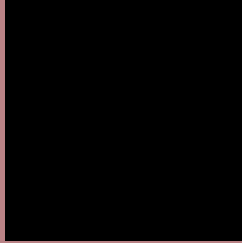
Any Text WCAG AA ✓ Pass

Large Text (above 18pt) WCAG AAA ✓ Pass

Any Text WCAG AAA × Fail

If you want to check with other color combinations, try the [Color Contrast Checker](#).

RGB 185, 130, 133 Background



This preview shows how black text looks on a background with the RGB color 185, 130, 133.



This preview shows how white text looks on a background with the RGB color 185, 130, 133.

Color Blindness Simulation

Color vision deficiency is a very complex topic, and I could not describe the different causes any better than Wikipedia does, so if you want to learn more, you should check out their [article about color blindness](#).

Dichromacy



Original Color
185, 130, 133

Protanopia
148, 144, 141

Deuteranopia
163, 139, 131



Tritanopia
186, 129, 139

Trichromacy



Original Color
185, 130, 133

Protanomaly
161, 139, 138

Deuteranomaly
171, 136, 132

Tritanomaly
186, 129, 137

Monochromacy



Original Color
185, 130, 133

Achromatopsia
147, 147, 147

Achromatomaly
161, 141, 142

CSS Examples

Text

The CSS property to change the color of the text to RGB 185, 130, 133 is called "color". The color property can be set on classes, ids or directly on the HTML element.

This example shows how text in the color `rgb(185, 130, 133)` looks like.

```
.text, #text, p{  
    color:rgb(185, 130, 133)  
}
```

If you want to add a text shadow in that color use the text-shadow property, you can generate a text shadow directly with our [CSS Text Shadow Generator](#).

Here you see how black text with a 4 pixel rgb(185, 130, 133) colored shadow looks like.

```
.shadow{ text-shadow: 4px 4px 2px rgb(185, 130, 133) }
```

Border

The CSS property to change the border of an element to RGB 185, 130, 133 is called "border". The border property can be set on classes, ids or directly on the HTML element.

This example shows the color as border, it can be applied via the CSS property "border" or "border-color".

```
.border, #border, table{ border:4px solid rgb(185, 130, 133) }
```

If only the border color should be changed use the property `border-color`.

```
.border{ border-color:rgb(185, 130, 133) }
```

If you want to add a box shadow in that color use:

Here you see how a box with a 4 pixel `rgb(185, 130, 133)` colored shadow looks like.

```
.boxshadow{ -moz-box-shadow:4px 4px 4px  
4px rgb(185, 130, 133); -webkit-box-  
shadow:4px 4px 4px 4px rgb(185, 130, 133);  
box-shadow:4px 4px 4px 4px rgb(185, 130,  
133) }
```

Background

The CSS property to change the background color of an element to RGB 185, 130, 133 is called "background". The background property can be set on classes, ids or directly on the HTML element.

```
.background, #background, body{  
background: rgb(185, 130, 133) }
```

If only the background color should be changed can be used:

```
.background{ background-color: rgb(185,  
130, 133) }
```

This example shows the color as background, it is applied via the CSS property "background".

To optimize and compress your CSS code, you can use our [online CSS compressor and optimizer](#) based on csstidy. If you want to create a linear or radial gradient as background or border, check our [CSS Gradient Generator](#).

Hey! You found this booklet interesting? Support Converting Colors with the new Membership Option!

The pro membership hides all ads, plus gives you double the colors in the color bucket, and more awesome pro features!

[Learn more, Memberships starting at \\$2.50/m!](#)

**Follow me
on Twitter!**

@ConvertingColor