

Converting Colors

RGB(185, 131, 112)

Have a look what the booklet for
RGB(185, 131, 112) contains.

RGB(185, 131, 112)	3
<i>Conversions</i>	4
<i>Details</i>	6
<i>Harmonies</i>	11
<i>Previews</i>	23
<i>Color Blindness Simulation</i>	26
<i>CSS Examples</i>	29

Color

RGB(185, 131, 112)

Conversions

Conversions Part 1

Format	Color
Hex	B98370
RGB	185, 131, 112
RGB Percent	73%, 51%, 44%
CMY	0.2745, 0.4863, 0.5608
CMYK	0.00, 0.29, 0.39, 0.27
HSL	16°, 34%, 58%
HSV	16°, 39%, 73%
XYZ	31.0485, 27.7167, 19.0427
YIQ	144.9800, 38.2830, 5.5390

Conversions

Conversions Part 2

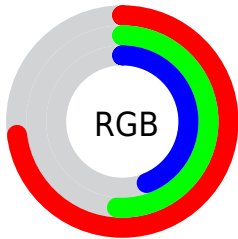
Format	Color
R_{YB}	185, 138, 112
Decimal	12157808
CIE _{Lab}	59.63, 18.35, 18.55
CIE _{LCh}	60, 26.098, 45.312
Yxy	27.7167, 0.3990, 0.3562
Android (android.graphics.Color)	4290347888 (0xFFB98370)
YUV	144.9800, -16.2591, 35.0975
Hunter-Lab	52.6467, 13.1391, 15.4071

Details

The RGB color **185, 131, 112** is a dark color, and the websafe version is hex **CC9999**. A complement of this color would be **112, 166, 185**, and the grayscale version is **145, 145, 145**.

A 20% lighter version of the original color is **243, 184, 164**, and **130, 81, 64** is the 20% darker color. If you saturate the color by 10%, you get **185, 117, 94**, and if you desaturate by 10%, it is **185, 145, 131**.

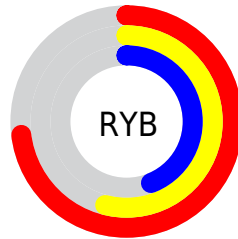
Distribution



Red (73%)

Green (51%)

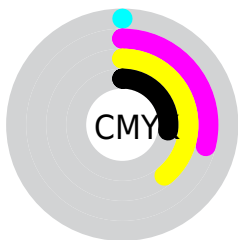
Blue (44%)



Red (73%)

Yellow (54%)

Blue (44%)

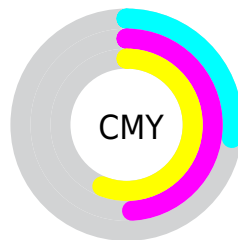


Cyan (0%)

Magenta (29%)

Yellow (39%)

Black (27%)



Cyan (27%)


Magenta (49%)

Yellow (56%)

Brightness & Saturation Gradients

These gradients show how the RGB color 185, 131, 112 changes by changing the brightness by 10 percent. The first figure shows a shift by +10% for each color and the second figure -10%.

Similar to the brightness gradients but the following saturation gradients show a change of the RGB color 185, 131, 112 by changing the saturation by 10% instead.

 185, 131, 112

255, 255, 255

 243, 184, 164

 255, 212, 191

 255, 240, 219

 255, 255, 247

 185, 131, 112

 157, 106, 87

 130, 81, 64

 103, 58, 42

 78, 36, 21

 53, 14, 0

 30, 0, 1


 0, 0, 0

 185, 131, 112

 185, 117, 94

 185, 131, 112

 185, 145, 131


 185, 104, 75

 185, 158, 149

 185, 90, 57

 185, 172, 168

 185, 76, 38

 185, 186, 186

 185, 63, 20

 185, 199, 205

 185, 49, 1

 185, 213, 223

 185, 48, 0

 185, 227, 242

 185, 240, 255

 185, 254, 255

Harmonies

Analogous

The Analogous color harmony consists of three colors that are next to each other on the color wheel.



190, 127, 133



185, 131, 112



170, 138, 100

Triad

The Triadic color harmony groups three colors that are evenly spaced from another and form a triangle on the color wheel.



185, 131, 112



95, 156, 131



131, 142, 188

Complementary

The Complementary color scheme is a pair of colors which are on the opposite of each other on the color wheel.



185, 131, 112



112, 166, 185

Split Complementary

Split-complementary colors differ from the complementary color scheme. The scheme consists of three colors, the original color and two neighbors of the complement color.



97, 149, 187



185, 131, 112



74, 156, 155

Square

The Square scheme is like the rectangle color scheme, but the four colors are evenly spaced on the color wheel.



185, 131, 112



122, 152, 111



73, 154, 175



161, 134, 176

Rectangle

The Rectangle color scheme consists of four colors that form a rectangle on the color wheel.



185, 131, 112



156, 143, 98



73, 154, 175



120, 144, 189

Sweetspot

The Sweet Spot groups the original color and five complimentary colors.



185, 131, 112



240, 218, 211



185, 112, 167



120, 107, 103



247, 247, 247



120, 120, 120

Same Dimension

The Same Dimension uses a secret algorithm to generate beautiful new colors.



185, 131, 112



240, 156, 127



185, 167, 112



92, 85, 83



156, 40, 0



28, 7, 0

Inverse Universe

The Inverse Universe completely reimagines the original color for something new.



112, 166, 185



127, 210, 240



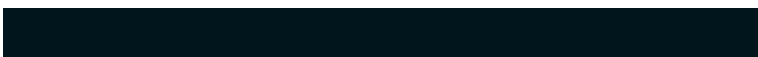
112, 130, 185



83, 89, 92



0, 115, 156



0, 21, 28

Previews

White Background



This preview shows how the RGB color 185, 131, 112 looks on a white background.

Color Contrast Check

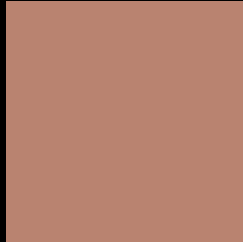
Large Text (above 18pt) WCAG AA ✓ Pass

Any Text WCAG AA ✗ Fail

Large Text (above 18pt) WCAG AAA ✗ Fail

Any Text WCAG AAA ✗ Fail

Black Background



This preview shows how the RGB color 185, 131, 112 looks on a black background.

Color Contrast Check

Large Text (above 18pt) WCAG AA ✓ Pass

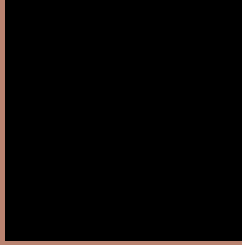
Any Text WCAG AA ✓ Pass

Large Text (above 18pt) WCAG AAA ✓ Pass

Any Text WCAG AAA × Fail

If you want to check with other color combinations, try the [Color Contrast Checker](#).

RGB 185, 131, 112 Background



This preview shows how black text looks on a background with the RGB color 185, 131, 112.



This preview shows how white text looks on a background with the RGB color 185, 131, 112.

Color Blindness Simulation

Color vision deficiency is a very complex topic, and I could not describe the different causes any better than Wikipedia does, so if you want to learn more, you should check out their [article about color blindness](#).

Dichromacy





Tritanopia
187, 127, 137

Trichromacy



Original Color
185, 131, 112

Protanomaly
164, 139, 116

Deuteranomaly
175, 135, 111

Tritanomaly
186, 128, 128

Monochromacy



Original Color
185, 131, 112

Achromatopsia
145, 145, 145

Achromatomaly
160, 140, 133

CSS Examples

Text

The CSS property to change the color of the text to RGB 185, 131, 112 is called "color". The color property can be set on classes, ids or directly on the HTML element.

This example shows how text in the color `rgb(185, 131, 112)` looks like.

```
.text, #text, p{  
    color:rgb(185, 131, 112)  
}
```

If you want to add a text shadow in that color use the text-shadow property, you can generate a text shadow directly with our [CSS Text Shadow Generator](#).

Here you see how black text with a 4 pixel rgb(185, 131, 112) colored shadow looks like.

```
.shadow{ text-shadow: 4px 4px 2px rgb(185, 131, 112) }
```

Border

The CSS property to change the border of an element to RGB 185, 131, 112 is called "border". The border property can be set on classes, ids or directly on the HTML element.

This example shows the color as border, it can be applied via the CSS property "border" or "border-color".

```
.border, #border, table{ border:4px solid rgb(185, 131, 112) }
```

If only the border color should be changed use the property `border-color`.

```
.border{ border-color:rgb(185, 131, 112) }
```

If you want to add a box shadow in that color use:

Here you see how a box with a 4 pixel `rgb(185, 131, 112)` colored shadow looks like.

```
.boxshadow{ -moz-box-shadow:4px 4px 4px  
4px rgb(185, 131, 112); -webkit-box-  
shadow:4px 4px 4px 4px rgb(185, 131, 112);  
box-shadow:4px 4px 4px 4px rgb(185, 131,  
112) }
```

Background

The CSS property to change the background color of an element to RGB 185, 131, 112 is called "background". The background property can be set on classes, ids or directly on the HTML element.

```
.background, #background, body{  
background: rgb(185, 131, 112) }
```

If only the background color should be changed can be used:

```
.background{ background-color: rgb(185,  
131, 112) }
```

This example shows the color as background, it is applied via the CSS property "background".

To optimize and compress your CSS code, you can use our [online CSS compressor and optimizer](#) based on csstidy. If you want to create a linear or radial gradient as background or border, check our [CSS Gradient Generator](#).

Hey! You found this booklet interesting? Support Converting Colors with the new Membership Option!

The pro membership hides all ads, plus gives you double the colors in the color bucket, and more awesome pro features!

[Learn more, Memberships starting at \\$2.50/m!](#)

**Follow me
on Twitter!**

@ConvertingColor