

Converting Colors

RGB(185, 140, 140)

Have a look what the booklet for
RGB(185, 140, 140) contains.

RGB(185, 140, 140)	3
<i>Conversions</i>	4
<i>Details</i>	6
<i>Harmonies</i>	11
<i>Previews</i>	23
<i>Color Blindness Simulation</i>	26
<i>CSS Examples</i>	29

Color

RGB(185, 140, 140)

Conversions

Conversions Part 1

Format	Color
Hex	B98C8C
RGB	185, 140, 140
RGB Percent	73%, 55%, 55%
CMY	0.2745, 0.4510, 0.4510
CMYK	0.00, 0.24, 0.24, 0.27
HSL	0°, 24%, 64%
HSV	0°, 24%, 73%
XYZ	34.1193, 30.9639, 28.9893
YIQ	153.4550, 26.8200, 9.5400

Conversions

Conversions Part 2

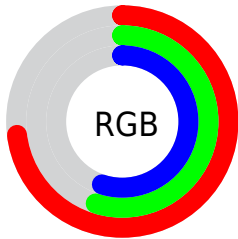
Format	Color
RYB	185, 140, 140
Decimal	12160140
CIELab	62.48, 17.09, 6.64
CIELCh	62, 18.333, 21.241
Yxy	30.9639, 0.3627, 0.3291
Android (android.graphics.Color)	4290350220 (0xFFB98C8C)
YUV	153.4550, -6.6333, 27.6650
Hunter-Lab	55.6452, 12.0695, 8.0636

Details

The RGB color **185, 140, 140** is a light color, and the websafe version is hex **CC9999**. A complement of this color would be **140, 185, 185**, and the grayscale version is **154, 154, 154**.

A 20% lighter version of the original color is **242, 194, 193**, and **131, 90, 90** is the 20% darker color. If you saturate the color by 10%, you get **185, 122, 122**, and if you desaturate by 10%, it is **185, 159, 159**.

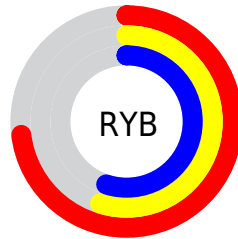
Distribution



Red (73%)

Green (55%)

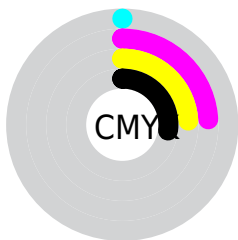
Blue (55%)



Red (73%)

Yellow (55%)

Blue (55%)

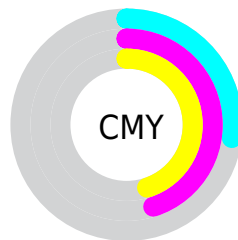


Cyan (0%)

Magenta (24%)

Yellow (24%)

Black (27%)



Cyan (27%)

Magenta (45%)

Yellow (45%)

Brightness & Saturation Gradients

These gradients show how the RGB color 185, 140, 140 changes by changing the brightness by 10 percent. The first figure shows a shift by +10% for each color and the second figure -10%.

Similar to the brightness gradients but the following saturation gradients show a change of the RGB color 185, 140, 140 by changing the saturation by 10% instead.

 185, 140, 140

255, 255, 255


 242, 194, 193

 255, 222, 221

 255, 250, 250

 185, 140, 140

 158, 114, 115

 131, 90, 90

 105, 66, 67

 80, 43, 45

 56, 22, 24

 36, 0, 0


 0, 0, 0

 185, 140, 140

 185, 122, 122

 185, 140, 140

 185, 159, 159

 185, 103, 103

 185, 177, 177

 185, 85, 85

 185, 196, 196

 185, 66, 66

 185, 214, 214

 185, 48, 48

 185, 233, 233

 185, 29, 29

 185, 251, 251

 185, 10, 10

 185, 255, 255

 185, 0, 0

Harmonies

Analogous

The Analogous color harmony consists of three colors that are next to each other on the color wheel.



181, 140, 157



185, 140, 140



180, 143, 126

Triad

The Triadic color harmony groups three colors that are evenly spaced from another and form a triangle on the color wheel.



185, 140, 140



133, 158, 130



126, 154, 183

Complementary

The Complementary color scheme is a pair of colors which are on the opposite of each other on the color wheel.



185, 140, 140



140, 185, 185

Split Complementary

Split-complementary colors differ from the complementary color scheme. The scheme consists of three colors, the original color and two neighbors of the complement color.



110, 158, 176



185, 140, 140



116, 160, 146

Square

The Square scheme is like the rectangle color scheme, but the four colors are evenly spaced on the color wheel.



185, 140, 140



151, 154, 121



107, 160, 162



148, 149, 181

Rectangle

The Rectangle color scheme consists of four colors that form a rectangle on the color wheel.



185, 140, 140



173, 147, 121



107, 160, 162



120, 156, 181

Sweetspot

The Sweet Spot groups the original color and five complimentary colors.



185, 140, 140



240, 223, 223



185, 140, 185



120, 110, 110



247, 247, 247



120, 120, 120

Same Dimension

The Same Dimension uses a secret algorithm to generate beautiful new colors.



185, 140, 140



240, 170, 170



185, 163, 140



92, 83, 83



156, 0, 0



28, 0, 0

Inverse Universe

The Inverse Universe completely reimagines the original color for something new.



140, 185, 185



170, 240, 240



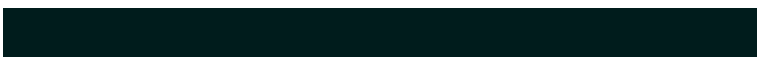
140, 163, 185



83, 92, 92



0, 156, 156



0, 28, 28

Previews

White Background



This preview shows how the RGB color 185, 140, 140 looks on a white background.

Color Contrast Check

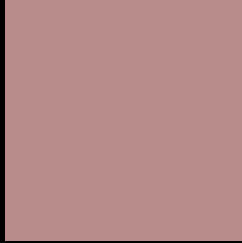
Large Text (above 18pt) WCAG AA × Fail

Any Text WCAG AA × Fail

Large Text (above 18pt) WCAG AAA × Fail

Any Text WCAG AAA × Fail

Black Background



This preview shows how the RGB color 185, 140, 140 looks on a black background.

Color Contrast Check

Large Text (above 18pt) WCAG AA ✓ Pass

Any Text WCAG AA ✓ Pass

Large Text (above 18pt) WCAG AAA ✓ Pass

Any Text WCAG AAA ✓ Pass

If you want to check with other color combinations, try the [Color Contrast Checker](#).

RGB 185, 140, 140 Background



This preview shows how black text looks on a background with the RGB color 185, 140, 140.

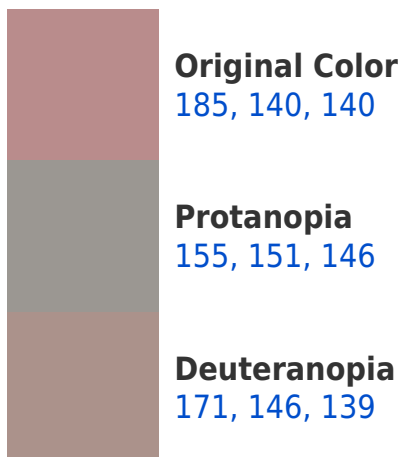



This preview shows how white text looks on a background with the RGB color 185, 140, 140.

Color Blindness Simulation

Color vision deficiency is a very complex topic, and I could not describe the different causes any better than Wikipedia does, so if you want to learn more, you should check out their [article about color blindness](#).

Dichromacy





Tritanopia
186, 139, 149

Trichromacy



Original Color

185, 140, 140

Protanomaly

166, 147, 144

Deuteranomaly

176, 144, 139

Tritanomaly

186, 139, 146

Monochromacy



Original Color

185, 140, 140

Achromatopsia

153, 153, 153

Achromatomaly

165, 148, 148

CSS Examples

Text

The CSS property to change the color of the text to RGB 185, 140, 140 is called "color". The color property can be set on classes, ids or directly on the HTML element.

This example shows how text in the color `rgb(185, 140, 140)` looks like.

```
.text, #text, p{  
    color:rgb(185, 140, 140)  
}
```

If you want to add a text shadow in that color use the text-shadow property, you can generate a text shadow directly with our [CSS Text Shadow Generator](#).

Here you see how black text with a 4 pixel rgb(185, 140, 140) colored shadow looks like.

```
.shadow{ text-shadow: 4px 4px 2px rgb(185, 140, 140) }
```

Border

The CSS property to change the border of an element to RGB 185, 140, 140 is called "border". The border property can be set on classes, ids or directly on the HTML element.

This example shows the color as border, it can be applied via the CSS property "border" or "border-color".

```
.border, #border, table{ border:4px solid rgb(185, 140, 140) }
```

If only the border color should be changed use the property `border-color`.

```
.border{ border-color:rgb(185, 140, 140) }
```

If you want to add a box shadow in that color use:

Here you see how a box with a 4 pixel `rgb(185, 140, 140)` colored shadow looks like.

```
.boxshadow{ -moz-box-shadow:4px 4px 4px  
4px rgb(185, 140, 140); -webkit-box-  
shadow:4px 4px 4px 4px rgb(185, 140, 140);  
box-shadow:4px 4px 4px 4px rgb(185, 140,  
140) }
```

Background

The CSS property to change the background color of an element to RGB 185, 140, 140 is called "background". The background property can be set on classes, ids or directly on the HTML element.

```
.background, #background, body{  
background: rgb(185, 140, 140) }
```

If only the background color should be changed can be used:

```
.background{ background-color: rgb(185,  
140, 140) }
```

This example shows the color as background, it is applied via the CSS property "background".

To optimize and compress your CSS code, you can use our [online CSS compressor and optimizer](#) based on csstidy. If you want to create a linear or radial gradient as background or border, check our [CSS Gradient Generator](#).

Hey! You found this booklet interesting? Support Converting Colors with the new Membership Option!

The pro membership hides all ads, plus gives you double the colors in the color bucket, and more awesome pro features!

[Learn more, Memberships starting at \\$2.50/m!](#)

**Follow me
on Twitter!**

@ConvertingColor