

Converting Colors

RGB(185, 141, 110)

Have a look what the booklet for
RGB(185, 141, 110) contains.

RGB(185, 141, 110)	3
<i>Conversions</i>	4
<i>Details</i>	6
<i>Harmonies</i>	11
<i>Previews</i>	23
<i>Color Blindness Simulation</i>	26
<i>CSS Examples</i>	29

Color

RGB(185, 141, 110)

Conversions

Conversions Part 1

Format	Color
Hex	B98D6E
RGB	185, 141, 110
RGB Percent	73%, 55%, 43%
CMY	0.2745, 0.4471, 0.5686
CMYK	0.00, 0.24, 0.41, 0.27
HSL	25°, 35%, 58%
HSV	25°, 41%, 73%
XYZ	32.3469, 30.4898, 18.9321
YIQ	150.6220, 36.1750, -0.3130

Conversions

Conversions Part 2

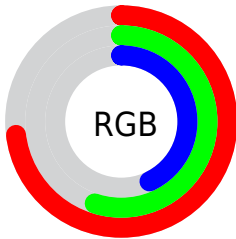
Format	Color
RYB	185, 163, 110
Decimal	12160366
CIELab	62.07, 12.56, 22.98
CIELCh	62, 26.190, 61.344
Yxy	30.4898, 0.3956, 0.3729
Android (android.graphics.Color)	4290350446 (0xFFB98D6E)
YUV	150.6220, -20.0266, 30.1495
Hunter-Lab	55.2176, 7.9360, 18.3239

Details

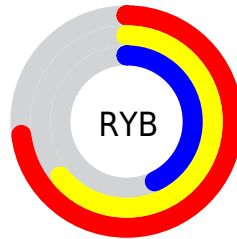
The RGB color **185, 141, 110** is a dark color, and the websafe version is hex **CC9966**. A complement of this color would be **110, 154, 185**, and the grayscale version is **151, 151, 151**.

A 20% lighter version of the original color is **242, 195, 162**, and **130, 91, 62** is the 20% darker color. If you saturate the color by 10%, you get **185, 130, 92**, and if you desaturate by 10%, it is **185, 152, 129**.

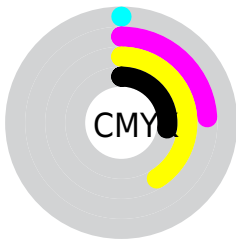
Distribution



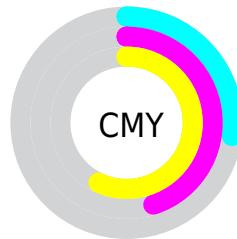
- Red (73%)
- Green (55%)
- Blue (43%)



- Red (73%)
- Yellow (64%)
- Blue (43%)



- Cyan (0%)
- Magenta (24%)
- Yellow (41%)
- Black (27%)



- Cyan (27%)
- Magenta (45%)
- Yellow (57%)

Brightness & Saturation Gradients

These gradients show how the RGB color 185, 141, 110 changes by changing the brightness by 10 percent. The first figure shows a shift by +10% for each color and the second figure -10%.

Similar to the brightness gradients but the following saturation gradients show a change of the RGB color 185, 141, 110 by changing the saturation by 10% instead.

 185, 141, 110

255, 255, 255

 242, 195, 162

 255, 223, 189

 255, 251, 217

 255, 255, 245

 185, 141, 110

 185, 130, 92

 185, 141, 110

 157, 115, 85

 130, 91, 62

 104, 67, 40


 78, 45, 19

 54, 24, 0

 31, 0, 0

 0, 0, 0

 185, 141, 110

 185, 152, 129

■ 185, 119, 73

■ 185, 163, 147

■ 185, 108, 54

■ 185, 174, 165

■ 185, 98, 36

■ 185, 184, 184

■ 185, 87, 17

■ 185, 195, 203

■ 185, 76, 0

■ 185, 206, 221

■ 185, 217, 239

■ 185, 228, 255

■ 185, 239, 255

Harmonies

Analogous

The Analogous color harmony consists of three colors that are next to each other on the color wheel.



196, 135, 127



185, 141, 110



165, 149, 104

Triad

The Triadic color harmony groups three colors that are evenly spaced from another and form a triangle on the color wheel.



185, 141, 110



89, 163, 150



155, 144, 190

Complementary

The Complementary color scheme is a pair of colors which are on the opposite of each other on the color wheel.



185, 141, 110



110, 154, 185

Split Complementary

Split-complementary colors differ from the complementary color scheme. The scheme consists of three colors, the original color and two neighbors of the complement color.



122, 152, 196



185, 141, 110



77, 162, 173

Square

The Square scheme is like the rectangle color scheme, but the four colors are evenly spaced on the color wheel.



185, 141, 110



114, 161, 127



91, 158, 190



181, 136, 173

Rectangle

The Rectangle color scheme consists of four colors that form a rectangle on the color wheel.



185, 141, 110



149, 154, 106



91, 158, 190



144, 146, 193

Sweetspot

The Sweet Spot groups the original color and five complimentary colors.



185, 141, 110



240, 223, 211



185, 110, 155



120, 110, 103



247, 247, 247



120, 120, 120

Same Dimension

The Same Dimension uses a secret algorithm to generate beautiful new colors.



185, 141, 110



240, 171, 122



185, 178, 110



92, 86, 83



156, 64, 0



28, 12, 0

Inverse Universe

The Inverse Universe completely reimagines the original color for something new.



110, 154, 185



122, 191, 240



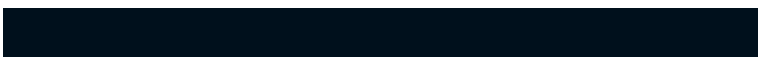
110, 117, 185



83, 88, 92



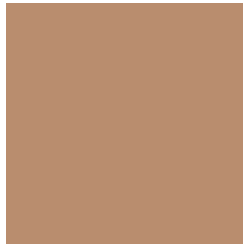
0, 91, 156



0, 16, 28

Previews

White Background



This preview shows how the RGB color 185, 141, 110 looks on a white background.

Color Contrast Check

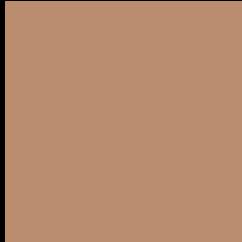
Large Text (above 18pt) WCAG AA × Fail

Any Text WCAG AA × Fail

Large Text (above 18pt) WCAG AAA × Fail

Any Text WCAG AAA × Fail

Black Background



This preview shows how the RGB color 185, 141, 110 looks on a black background.

Color Contrast Check

Large Text (above 18pt) WCAG AA ✓ Pass

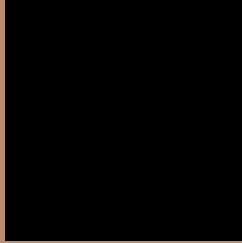
Any Text WCAG AA ✓ Pass

Large Text (above 18pt) WCAG AAA ✓ Pass

Any Text WCAG AAA ✓ Pass

If you want to check with other color combinations, try the [Color Contrast Checker](#).

RGB 185, 141, 110 Background



This preview shows how black text looks on a background with the RGB color 185, 141, 110.



This preview shows how white text looks on a background with the RGB color 185, 141, 110.

Color Blindness Simulation

Color vision deficiency is a very complex topic, and I could not describe the different causes any better than Wikipedia does, so if you want to learn more, you should check out their [article about color blindness](#).

Dichromacy





Tritanopia
189, 136, 146

Trichromacy



Original Color

185, 141, 110

Protanomaly

170, 147, 113

Deuteranomaly

181, 143, 109

Tritanomaly

188, 138, 133

Monochromacy



Original Color

185, 141, 110

Achromatopsia

151, 151, 151

Achromatomaly

163, 147, 136

CSS Examples

Text

The CSS property to change the color of the text to RGB 185, 141, 110 is called "color". The color property can be set on classes, ids or directly on the HTML element.

This example shows how text in the color `rgb(185, 141, 110)` looks like.

```
.text, #text, p{  
    color:rgb(185, 141, 110)  
}
```

If you want to add a text shadow in that color use the text-shadow property, you can generate a text shadow directly with our [CSS Text Shadow Generator](#).

Here you see how black text with a 4 pixel rgb(185, 141, 110) colored shadow looks like.

```
.shadow{ text-shadow: 4px 4px 2px rgb(185, 141, 110) }
```

Border

The CSS property to change the border of an element to RGB 185, 141, 110 is called "border". The border property can be set on classes, ids or directly on the HTML element.

This example shows the color as border, it can be applied via the CSS property "border" or "border-color".

```
.border, #border, table{ border:4px solid rgb(185, 141, 110) }
```

If only the border color should be changed use the property `border-color`.

```
.border{ border-color:rgb(185, 141, 110) }
```

If you want to add a box shadow in that color use:

Here you see how a box with a 4 pixel `rgb(185, 141, 110)` colored shadow looks like.

```
.boxshadow{ -moz-box-shadow:4px 4px 4px  
4px rgb(185, 141, 110); -webkit-box-  
shadow:4px 4px 4px 4px rgb(185, 141, 110);  
box-shadow:4px 4px 4px 4px rgb(185, 141,  
110) }
```

Background

The CSS property to change the background color of an element to RGB 185, 141, 110 is called "background". The background property can be set on classes, ids or directly on the HTML element.

```
.background, #background, body{  
background: rgb(185, 141, 110) }
```

If only the background color should be changed can be used:

```
.background{ background-color: rgb(185,  
141, 110) }
```

This example shows the color as background, it is applied via the CSS property "background".

To optimize and compress your CSS code, you can use our [online CSS compressor and optimizer](#) based on csstidy. If you want to create a linear or radial gradient as background or border, check our [CSS Gradient Generator](#).

Hey! You found this booklet interesting? Support Converting Colors with the new Membership Option!

The pro membership hides all ads, plus gives you double the colors in the color bucket, and more awesome pro features!

[Learn more, Memberships starting at \\$2.50/m!](#)

**Follow me
on Twitter!**

@ConvertingColor