

Converting Colors

RGB(185, 148, 147)

Have a look what the booklet for
RGB(185, 148, 147) contains.

RGB(185, 148, 147)	3
<i>Conversions</i>	4
<i>Details</i>	6
<i>Harmonies</i>	11
<i>Previews</i>	23
<i>Color Blindness Simulation</i>	26
<i>CSS Examples</i>	29

Color

RGB(185, 148, 147)

Conversions

Conversions Part 1

Format	Color
Hex	B99493
RGB	185, 148, 147
RGB Percent	73%, 58%, 58%
CMY	0.2745, 0.4196, 0.4235
CMYK	0.00, 0.20, 0.21, 0.27
HSL	2°, 21%, 65%
HSV	2°, 21%, 73%
XYZ	35.8639, 33.6007, 32.1991
YIQ	158.9490, 22.3730, 7.5330

Conversions

Conversions Part 2

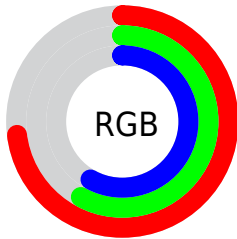
Format	Color
RYB	185, 148, 147
Decimal	12162195
CIELab	64.64, 13.70, 5.79
CIELCh	65, 14.877, 22.924
Yxy	33.6007, 0.3528, 0.3305
Android (android.graphics.Color)	4290352275 (0xFFB99493)
YUV	158.9490, -5.8909, 22.8467
Hunter-Lab	57.9661, 8.9983, 7.6418

Details

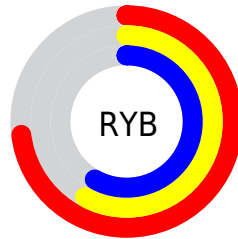
The RGB color **185, 148, 147** is a light color, and the websafe version is hex **CC9999**. A complement of this color would be **147, 184, 185**, and the grayscale version is **159, 159, 159**.

A 20% lighter version of the original color is **242, 202, 201**, and **131, 97, 97** is the 20% darker color. If you saturate the color by 10%, you get **185, 130, 129**, and if you desaturate by 10%, it is **185, 166, 165**.

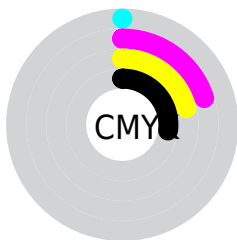
Distribution



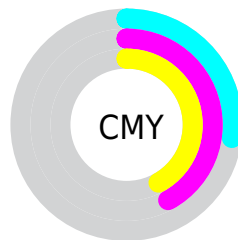
- Red (73%)
- Green (58%)
- Blue (58%)



- Red (73%)
- Yellow (58%)
- Blue (58%)



- Cyan (0%)
- Magenta (20%)
- Yellow (21%)
- Black (27%)



- Cyan (27%)
- Magenta (42%)
- Yellow (42%)

Brightness & Saturation Gradients

These gradients show how the RGB color 185, 148, 147 changes by changing the brightness by 10 percent. The first figure shows a shift by +10% for each color and the second figure -10%.

Similar to the brightness gradients but the following saturation gradients show a change of the RGB color 185, 148, 147 by changing the saturation by 10% instead.

 185, 148, 147


255, 255, 255

 242, 202, 201


 255, 230, 229

 185, 148, 147

 158, 122, 121

 131, 97, 97

 106, 73, 73

 81, 51, 50

 57, 29, 29


 36, 6, 3

 0, 0, 0

 185, 148, 147

 185, 130, 129

 185, 148, 147

 185, 166, 165

185, 112, 110

185, 184, 184

185, 94, 91

185, 202, 203

185, 76, 73

185, 220, 221

185, 58, 54

185, 238, 239

185, 40, 36

185, 255, 255

185, 22, 17

185, 5, 0

Harmonies

Analogous

The Analogous color harmony consists of three colors that are next to each other on the color wheel.



182, 148, 160



185, 148, 147



181, 151, 136

Triad

The Triadic color harmony groups three colors that are evenly spaced from another and form a triangle on the color wheel.



185, 148, 147



141, 163, 140



138, 159, 183

Complementary

The Complementary color scheme is a pair of colors which are on the opposite of each other on the color wheel.



185, 148, 147



147, 184, 185

Split Complementary

Split-complementary colors differ from the complementary color scheme. The scheme consists of three colors, the original color and two neighbors of the complement color.



126, 162, 177



185, 148, 147



128, 164, 153

Square

The Square scheme is like the rectangle color scheme, but the four colors are evenly spaced on the color wheel.



185, 148, 147



156, 159, 132



122, 164, 167



155, 154, 181

Rectangle

The Rectangle color scheme consists of four colors that form a rectangle on the color wheel.



185, 148, 147



174, 153, 132



122, 164, 167



133, 160, 182

Sweetspot

The Sweet Spot groups the original color and five complimentary colors.



185, 148, 147



240, 226, 225



185, 147, 184



120, 112, 111



247, 247, 247



120, 120, 120

Same Dimension

The Same Dimension uses a secret algorithm to generate beautiful new colors.



185, 148, 147



240, 181, 180



185, 167, 147



92, 83, 83



156, 4, 0



28, 1, 0

Inverse Universe

The Inverse Universe completely reimagines the original color for something new.



147, 184, 185



180, 238, 240



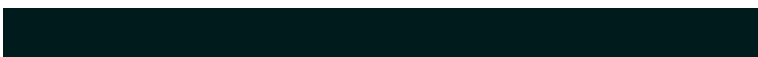
147, 165, 185



83, 92, 92



0, 151, 156



0, 27, 28

Previews

White Background



This preview shows how the RGB color 185, 148, 147 looks on a white background.

Color Contrast Check

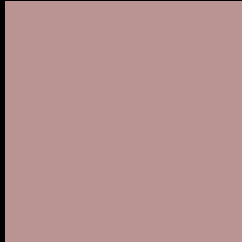
Large Text (above 18pt) WCAG AA × Fail

Any Text WCAG AA × Fail

Large Text (above 18pt) WCAG AAA × Fail

Any Text WCAG AAA × Fail

Black Background



This preview shows how the RGB color 185, 148, 147 looks on a black background.

Color Contrast Check

Large Text (above 18pt) WCAG AA ✓ Pass

Any Text WCAG AA ✓ Pass

Large Text (above 18pt) WCAG AAA ✓ Pass

Any Text WCAG AAA ✓ Pass

If you want to check with other color combinations, try the [Color Contrast Checker](#).

RGB 185, 148, 147 Background



This preview shows how black text looks on a background with the RGB color 185, 148, 147.



This preview shows how white text looks on a background with the RGB color 185, 148, 147.

Color Blindness Simulation

Color vision deficiency is a very complex topic, and I could not describe the different causes any better than Wikipedia does, so if you want to learn more, you should check out their [article about color blindness](#).

Dichromacy



Original Color

185, 148, 147

Protanopia

161, 156, 152

Deuteranopia

176, 152, 146



Tritanopia
186, 146, 158

Trichromacy



Original Color

185, 148, 147

Protanomaly

170, 153, 150

Deuteranomaly

179, 151, 146

Tritanomaly

186, 147, 154

Monochromacy



Original Color

185, 148, 147

Achromatopsia

159, 159, 159

Achromatomaly

168, 155, 155

CSS Examples

Text

The CSS property to change the color of the text to RGB 185, 148, 147 is called "color". The color property can be set on classes, ids or directly on the HTML element.

This example shows how text in the color `rgb(185, 148, 147)` looks like.

```
.text, #text, p{  
    color:rgb(185, 148, 147)  
}
```

If you want to add a text shadow in that color use the text-shadow property, you can generate a text shadow directly with our [CSS Text Shadow Generator](#).

Here you see how black text with a 4 pixel rgb(185, 148, 147) colored shadow looks like.

```
.shadow{ text-shadow: 4px 4px 2px rgb(185, 148, 147) }
```

Border

The CSS property to change the border of an element to RGB 185, 148, 147 is called "border". The border property can be set on classes, ids or directly on the HTML element.

This example shows the color as border, it can be applied via the CSS property "border" or "border-color".

```
.border, #border, table{ border:4px solid rgb(185, 148, 147) }
```

If only the border color should be changed use the property `border-color`.

```
.border{ border-color:rgb(185, 148, 147) }
```

If you want to add a box shadow in that color use:

Here you see how a box with a 4 pixel `rgb(185, 148, 147)` colored shadow looks like.

```
.boxshadow{ -moz-box-shadow:4px 4px 4px  
4px rgb(185, 148, 147); -webkit-box-  
shadow:4px 4px 4px 4px rgb(185, 148, 147);  
box-shadow:4px 4px 4px 4px rgb(185, 148,  
147) }
```

Background

The CSS property to change the background color of an element to RGB 185, 148, 147 is called "background". The background property can be set on classes, ids or directly on the HTML element.

```
.background, #background, body{  
background: rgb(185, 148, 147) }
```

If only the background color should be changed can be used:

```
.background{ background-color: rgb(185,  
148, 147) }
```

This example shows the color as background, it is applied via the CSS property "background".

To optimize and compress your CSS code, you can use our [online CSS compressor and optimizer](#) based on csstidy. If you want to create a linear or radial gradient as background or border, check our [CSS Gradient Generator](#).

Hey! You found this booklet interesting? Support Converting Colors with the new Membership Option!

The pro membership hides all ads, plus gives you double the colors in the color bucket, and more awesome pro features!

[Learn more, Memberships starting at \\$2.50/m!](#)

**Follow me
on Twitter!**

@ConvertingColor