

# Converting Colors

RGB(186, 107, 102)

Have a look what the booklet for  
RGB(186, 107, 102) contains.

|  |    |
|--|----|
| <b>RGB(186, 107, 102)</b> .....                | 3  |
| <b><i>Conversions</i></b> .....                | 4  |
| <b><i>Details</i></b> .....                    | 6  |
| <b><i>Harmonies</i></b> .....                  | 11 |
| <b><i>Previews</i></b> .....                   | 23 |
| <b><i>Color Blindness Simulation</i></b> ..... | 26 |
| <b><i>CSS Examples</i></b> .....               | 29 |

# Color

**RGB(186, 107, 102)**

# Conversions

## Conversions Part 1

| <b>Format</b> | <b>Color</b>               |
|---------------|----------------------------|
| Hex           | BA6B66                     |
| RGB           | 186, 107, 102              |
| RGB Percent   | 73%, 42%, 40%              |
| CMY           | 0.2706, 0.5804, 0.6000     |
| CMYK          | 0.00, 0.42, 0.45, 0.27     |
| HSL           | 4°, 38%, 56%               |
| HSV           | 4°, 45%, 73%               |
| XYZ           | 27.9057, 21.9138, 15.3294  |
| YIQ           | 130.0510, 48.6890, 15.1930 |

# Conversions

## Conversions Part 2

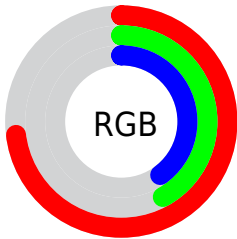
| <b>Format</b>  | <b>Color</b>                                |
|--|---|
| <a href="#">RYB</a>                                  | <a href="#">186, 107, 102</a>               |
| Decimal  | <a href="#">12217190</a>                    |
| <a href="#">CIELab</a>                               | <a href="#">53.94, 30.87, 16.53</a>         |
| <a href="#">CIElCh</a>                               | <a href="#">54, 35.022, 28.171</a>          |
| <a href="#">Yxy</a>                                  | <a href="#">21.9138, 0.4283, 0.3364</a>     |
| <a href="#">Android<br/>(android.graphics.Color)</a> | <a href="#">4290407270<br/>(0xFFBA6B66)</a> |
| <a href="#">YUV</a>                                  | <a href="#">130.0510, -13.8291, 49.0673</a> |
| <a href="#">Hunter-Lab</a>                           | <a href="#">46.8122, 24.4861, 13.3531</a>   |

# Details

The RGB color **186, 107, 102** is a dark color, and the websafe version is hex **CC6666**. A complement of this color would be **102, 181, 186**, and the grayscale version is **130, 130, 130**.

A 20% lighter version of the original color is **245, 159, 153**, and **130, 58, 55** is the 20% darker color. If you saturate the color by 10%, you get **186, 90, 83**, and if you desaturate by 10%, it is **186, 124, 121**.

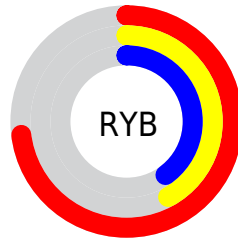
# Distribution



Red (73%)

Green (42%)

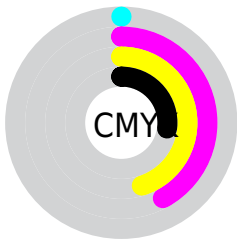
Blue (40%)



Red (73%)

Yellow (42%)

Blue (40%)

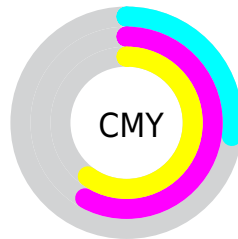


Cyan (0%)

Magenta (42%)

Yellow (45%)

Black (27%)



Cyan (27%)

Magenta (58%)

Yellow (60%)

# Brightness & Saturation Gradients

These gradients show how the RGB color 186, 107, 102 changes by changing the brightness by 10 percent. The first figure shows a shift by +10% for each color and the second figure -10%.

Similar to the brightness gradients but the following saturation gradients show a change of the RGB color 186, 107, 102 by changing the saturation by 10% instead.



 186, 107, 102

255, 255, 255

 245, 159, 153

 255, 187, 180

 255, 215, 207

 255, 244, 236

 186, 107, 102

 158, 82, 78

 130, 58, 55

 102, 34, 34

 76, 8, 12


 51, 0, 0


 12, 0, 0

 0, 0, 0

 186, 107, 102

 186, 90, 83

 186, 107, 102

 186, 124, 121

 186, 72, 65

 186, 142, 139

 186, 55, 46

 186, 159, 158

 186, 37, 28

 186, 177, 176

 186, 20, 9

 186, 194, 195

 186, 11, 0

 186, 212, 214

 186, 229, 232

 186, 247, 251

 186, 255, 255

# Harmonies

## Analogous

The Analogous color harmony consists of three colors that are next to each other on the color wheel.



184, 105, 132



186, 107, 102



173, 116, 78

# Triad

The Triadic color harmony groups three colors that are evenly spaced from another and form a triangle on the color wheel.



186, 107, 102



82, 142, 96



77, 133, 189

# Complementary

The Complementary color scheme is a pair of colors which are on the opposite of each other on the color wheel.



186, 107, 102



102, 181, 186

# Split Complementary

Split-complementary colors differ from the complementary color scheme. The scheme consists of three colors, the original color and two neighbors of the complement color.



0, 140, 180



186, 107, 102



31, 145, 126

# Square

The Square scheme is like the rectangle color scheme, but the four colors are evenly spaced on the color wheel.



186, 107, 102



119, 136, 74



0, 144, 156



129, 122, 182

# Rectangle

The Rectangle color scheme consists of four colors that form a rectangle on the color wheel.



186, 107, 102



158, 123, 69



0, 144, 156



56, 136, 188



# Sweetspot

The Sweet Spot groups the original color and five complimentary colors.



186, 107, 102



242, 210, 208



186, 102, 182



122, 103, 102



250, 250, 250



122, 122, 122



# Same Dimension

The Same Dimension uses a secret algorithm to generate beautiful new colors.



186, 107, 102



242, 119, 111



186, 148, 102



92, 83, 83



156, 9, 0



28, 2, 0



# Inverse Universe

The Inverse Universe completely reimagines the original color for something new.



102, 181, 186



111, 234, 242



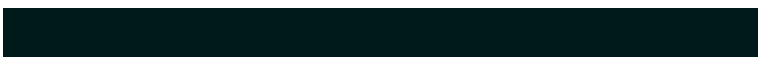
102, 140, 186



83, 91, 92



0, 146, 156

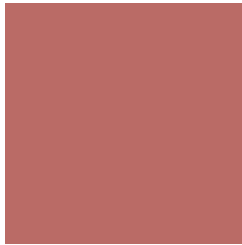


0, 26, 28



# Previews

## White Background



This preview shows how the RGB color 186, 107, 102 looks on a white background.

## Color Contrast Check

Large Text (above 18pt) WCAG AA ✓ Pass

Any Text WCAG AA × Fail

Large Text (above 18pt) WCAG AAA × Fail

Any Text WCAG AAA × Fail

# Black Background



This preview shows how the RGB color 186, 107, 102 looks on a black background.

## Color Contrast Check

Large Text (above 18pt) WCAG AA ✓ Pass

Any Text WCAG AA ✓ Pass

Large Text (above 18pt) WCAG AAA ✓ Pass

Any Text WCAG AAA × Fail

If you want to check with other color combinations, try the [Color Contrast Checker](#).



## RGB 186, 107, 102 Background



This preview shows how black text looks on a background with the RGB color 186, 107, 102.

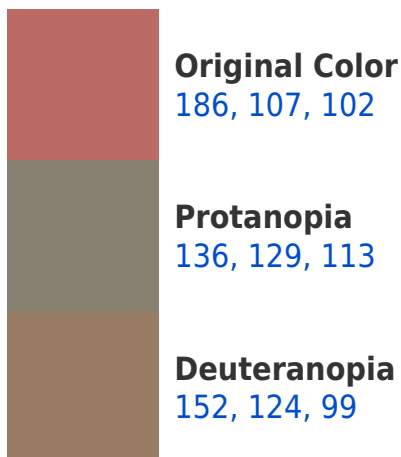



This preview shows how white text looks on a background with the RGB color 186, 107, 102.

# Color Blindness Simulation

Color vision deficiency is a very complex topic, and I could not describe the different causes any better than Wikipedia does, so if you want to learn more, you should check out their [article about color blindness](#).

## Dichromacy





**Tritanopia**  
187, 105, 113

# Trichromacy



**Original Color**

186, 107, 102

**Protanomaly**

154, 121, 109

**Deuteranomaly**

164, 118, 100

**Tritanomaly**

187, 106, 109

# Monochromacy



**Original Color**

186, 107, 102

**Achromatopsia**

130, 130, 130

**Achromatomaly**

150, 122, 120

# CSS Examples

## Text

The CSS property to change the color of the text to RGB 186, 107, 102 is called "color". The color property can be set on classes, ids or directly on the HTML element.

This example shows how text in the color `rgb(186, 107, 102)` looks like.

```
.text, #text, p{  
    color:rgb(186, 107, 102)  
}
```

If you want to add a text shadow in that color use the text-shadow property, you can generate a text shadow directly with our [CSS Text Shadow Generator](#).

Here you see how black text with a 4 pixel rgb(186, 107, 102) colored shadow looks like.

```
.shadow{ text-shadow: 4px 4px 2px rgb(186, 107, 102) }
```

## Border

The CSS property to change the border of an element to RGB 186, 107, 102 is called "border". The border property can be set on classes, ids or directly on the HTML element.

This example shows the color as border, it can be applied via the CSS property "border" or "border-color".

```
.border, #border, table{ border:4px solid rgb(186, 107, 102) }
```

If only the border color should be changed use the property `border-color`.

```
.border{ border-color:rgb(186, 107, 102) }
```

If you want to add a box shadow in that color use:

Here you see how a box with a 4 pixel `rgb(186, 107, 102)` colored shadow looks like.

```
.boxshadow{ -moz-box-shadow:4px 4px 4px  
4px rgb(186, 107, 102); -webkit-box-  
shadow:4px 4px 4px 4px rgb(186, 107, 102);  
box-shadow:4px 4px 4px 4px rgb(186, 107,  
102) }
```

# Background

The CSS property to change the background color of an element to RGB 186, 107, 102 is called "background". The background property can be set on classes, ids or directly on the HTML element.

```
.background, #background, body{  
background: rgb(186, 107, 102) }
```

If only the background color should be changed can be used:

```
.background{ background-color: rgb(186,  
107, 102) }
```

This example shows the color as background, it is applied via the CSS property "background".

To optimize and compress your CSS code, you can use our [online CSS compressor and optimizer](#) based on csstidy. If you want to create a linear or radial gradient as background or border, check our [CSS Gradient Generator](#).



Hey! You found this booklet interesting? Support Converting Colors with the new Membership Option!

The pro membership hides all ads, plus gives you double the colors in the color bucket, and more awesome pro features!

**[Learn more, Memberships starting at \\$2.50/m!](#)**

**Follow me  
on Twitter!**

@ConvertingColor