

Converting Colors

RGB(186, 119, 113)

Have a look what the booklet for
RGB(186, 119, 113) contains.

RGB(186, 119, 113)	3
<i>Conversions</i>	4
<i>Details</i>	6
<i>Harmonies</i>	11
<i>Previews</i>	23
<i>Color Blindness Simulation</i>	26
<i>CSS Examples</i>	29

Color

RGB(186, 119, 113)

Conversions

Conversions Part 1

Format	Color
Hex	BA7771
RGB	186, 119, 113
RGB Percent	73%, 47%, 44%
CMY	0.2706, 0.5333, 0.5569
CMYK	0.00, 0.36, 0.39, 0.27
HSL	5°, 35%, 59%
HSV	5°, 39%, 73%
XYZ	29.8272, 24.8250, 18.8424
YIQ	138.3490, 41.8580, 12.3380

Conversions

Conversions Part 2

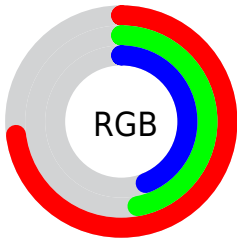
Format	Color
R_{YB}	186, 120, 113
Decimal	12220273
CIE Lab	56.90, 25.53, 14.25
CIE LCh	57, 29.239, 29.157
Yxy	24.8250, 0.4058, 0.3378
Android (android.graphics.Color)	4290410353 (0xFFBA7771)
YUV	138.3490, -12.4971, 41.7899
Hunter-Lab	49.8247, 19.6644, 12.4553

Details

The RGB color **186, 119, 113** is a dark color, and the websafe version is hex **996666**. A complement of this color would be **113, 180, 186**, and the grayscale version is **138, 138, 138**.

A 20% lighter version of the original color is **244, 172, 165**, and **130, 70, 65** is the 20% darker color. If you saturate the color by 10%, you get **186, 102, 94**, and if you desaturate by 10%, it is **186, 136, 132**.

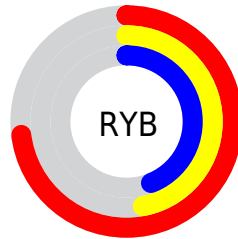
Distribution



Red (73%)

Green (47%)

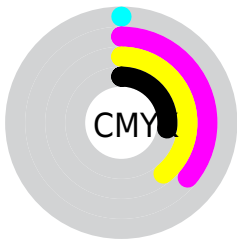
Blue (44%)



Red (73%)

Yellow (47%)

Blue (44%)

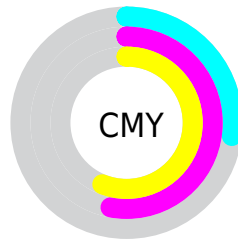


Cyan (0%)

Magenta (36%)

Yellow (39%)

Black (27%)



Cyan (27%)

Magenta (53%)

Yellow (56%)

Brightness & Saturation Gradients

These gradients show how the RGB color 186, 119, 113 changes by changing the brightness by 10 percent. The first figure shows a shift by +10% for each color and the second figure -10%.

Similar to the brightness gradients but the following saturation gradients show a change of the RGB color 186, 119, 113 by changing the saturation by 10% instead.

 186, 119, 113

255, 255, 255

 244, 172, 165

 255, 199, 192

 255, 228, 220


 255, 255, 248

 186, 119, 113

 158, 94, 89

 130, 70, 65

 104, 46, 43

 78, 23, 23

 53, 1, 0


 25, 0, 1

 0, 0, 0

 186, 119, 113

 186, 102, 94

 186, 119, 113

 186, 136, 132

 186, 85, 76

 186, 153, 150

 186, 68, 57

 186, 170, 169

 186, 51, 39

 186, 187, 187

 186, 34, 20

 186, 204, 206

 186, 17, 1

 186, 221, 225

 186, 15, 0

 186, 238, 243

 186, 255, 255

Harmonies

Analogous

The Analogous color harmony consists of three colors that are next to each other on the color wheel.



184, 117, 138



186, 119, 113



175, 126, 94

Triad

The Triadic color harmony groups three colors that are evenly spaced from another and form a triangle on the color wheel.



186, 119, 113



98, 148, 110



100, 139, 187

Complementary

The Complementary color scheme is a pair of colors which are on the opposite of each other on the color wheel.



186, 119, 113



113, 180, 186

Split Complementary

Split-complementary colors differ from the complementary color scheme. The scheme consists of three colors, the original color and two neighbors of the complement color.



61, 146, 180



186, 119, 113



67, 150, 135

Square

The Square scheme is like the rectangle color scheme, but the four colors are evenly spaced on the color wheel.



186, 119, 113



128, 142, 91



44, 150, 160



139, 130, 181

Rectangle

The Rectangle color scheme consists of four colors that form a rectangle on the color wheel.



186, 119, 113



162, 132, 87



44, 150, 160



86, 142, 186

Sweetspot

The Sweet Spot groups the original color and five complimentary colors.



186, 119, 113



242, 216, 213



186, 113, 181



122, 107, 105



250, 250, 250



122, 122, 122

Same Dimension

The Same Dimension uses a secret algorithm to generate beautiful new colors.



186, 119, 113



242, 138, 128



186, 154, 113



92, 83, 83



156, 13, 0



28, 2, 0

Inverse Universe

The Inverse Universe completely reimagines the original color for something new.



113, 180, 186



128, 233, 242



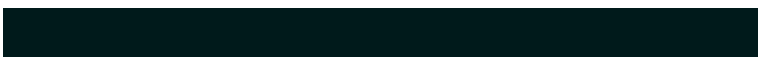
113, 145, 186



83, 91, 92



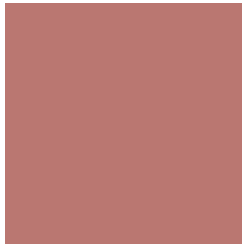
0, 143, 156



0, 26, 28

Previews

White Background



This preview shows how the RGB color 186, 119, 113 looks on a white background.

Color Contrast Check

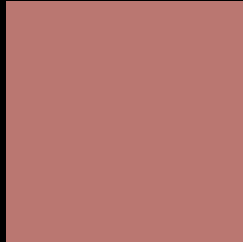
Large Text (above 18pt) WCAG AA ✓ Pass

Any Text WCAG AA × Fail

Large Text (above 18pt) WCAG AAA × Fail

Any Text WCAG AAA × Fail

Black Background



This preview shows how the RGB color 186, 119, 113 looks on a black background.

Color Contrast Check

Large Text (above 18pt) WCAG AA ✓ Pass

Any Text WCAG AA ✓ Pass

Large Text (above 18pt) WCAG AAA ✓ Pass

Any Text WCAG AAA × Fail

If you want to check with other color combinations, try the [Color Contrast Checker](#).

RGB 186, 119, 113 Background



This preview shows how black text looks on a background with the RGB color 186, 119, 113.



This preview shows how white text looks on a background with the RGB color 186, 119, 113.

Color Blindness Simulation

Color vision deficiency is a very complex topic, and I could not describe the different causes any better than Wikipedia does, so if you want to learn more, you should check out their [article about color blindness](#).

Dichromacy



Original Color
186, 119, 113

Protanopia
143, 137, 122

Deuteranopia
159, 132, 111



Tritanopia
187, 117, 126

Trichromacy



Original Color

186, 119, 113

Protanomaly

159, 130, 119

Deuteranomaly

169, 127, 112

Tritanomaly

187, 118, 121

Monochromacy



Original Color

186, 119, 113

Achromatopsia

138, 138, 138

Achromatomaly

155, 131, 129

CSS Examples

Text

The CSS property to change the color of the text to RGB 186, 119, 113 is called "color". The color property can be set on classes, ids or directly on the HTML element.

This example shows how text in the color `rgb(186, 119, 113)` looks like.

```
.text, #text, p{  
    color:rgb(186, 119, 113)  
}
```

If you want to add a text shadow in that color use the text-shadow property, you can generate a text shadow directly with our [CSS Text Shadow Generator](#).

Here you see how black text with a 4 pixel rgb(186, 119, 113) colored shadow looks like.

```
.shadow{ text-shadow: 4px 4px 2px rgb(186, 119, 113) }
```

Border

The CSS property to change the border of an element to RGB 186, 119, 113 is called "border". The border property can be set on classes, ids or directly on the HTML element.

This example shows the color as border, it can be applied via the CSS property "border" or "border-color".

```
.border, #border, table{ border:4px solid rgb(186, 119, 113) }
```

If only the border color should be changed use the property `border-color`.

```
.border{ border-color:rgb(186, 119, 113) }
```

If you want to add a box shadow in that color use:

Here you see how a box with a 4 pixel `rgb(186, 119, 113)` colored shadow looks like.

```
.boxshadow{ -moz-box-shadow:4px 4px 4px  
4px rgb(186, 119, 113); -webkit-box-  
shadow:4px 4px 4px 4px rgb(186, 119, 113);  
box-shadow:4px 4px 4px 4px rgb(186, 119,  
113) }
```

Background

The CSS property to change the background color of an element to RGB 186, 119, 113 is called "background". The background property can be set on classes, ids or directly on the HTML element.

```
.background, #background, body{  
background: rgb(186, 119, 113) }
```

If only the background color should be changed can be used:

```
.background{ background-color: rgb(186,  
119, 113) }
```

This example shows the color as background, it is applied via the CSS property "background".

To optimize and compress your CSS code, you can use our [online CSS compressor and optimizer](#) based on csstidy. If you want to create a linear or radial gradient as background or border, check our [CSS Gradient Generator](#).

Hey! You found this booklet interesting? Support Converting Colors with the new Membership Option!

The pro membership hides all ads, plus gives you double the colors in the color bucket, and more awesome pro features!

[Learn more, Memberships starting at \\$2.50/m!](#)

**Follow me
on Twitter!**

@ConvertingColor