

Converting Colors

RGB(186, 142, 120)

Have a look what the booklet for
RGB(186, 142, 120) contains.

RGB(186, 142, 120)	3
<i>Conversions</i>	4
<i>Details</i>	6
<i>Harmonies</i>	11
<i>Previews</i>	23
<i>Color Blindness Simulation</i>	26
<i>CSS Examples</i>	29

Color

RGB(186, 142, 120)

Conversions

Conversions Part 1

Format	Color
Hex	BA8E78
RGB	186, 142, 120
RGB Percent	73%, 56%, 47%
CMY	0.2706, 0.4431, 0.5294
CMYK	0.00, 0.24, 0.35, 0.27
HSL	20°, 32%, 60%
HSV	20°, 35%, 73%
XYZ	33.3129, 31.1412, 22.0244
YIQ	152.6480, 33.2860, 2.4860

Conversions

Conversions Part 2

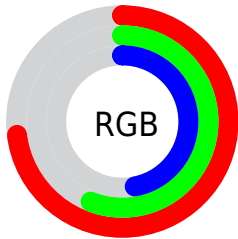
Format	Color
RYB	186, 153, 120
Decimal	12226168
CIELab	62.63, 13.62, 18.16
CIElCh	63, 22.701, 53.129
Yxy	31.1412, 0.3852, 0.3601
Android (android.graphics.Color)	4290416248 (0xFFBA8E78)
YUV	152.6480, -16.0955, 29.2497
Hunter-Lab	55.8043, 8.8997, 15.6629

Details

The RGB color **186, 142, 120** is a dark color, and the websafe version is hex **CC9999**. A complement of this color would be **120, 164, 186**, and the grayscale version is **153, 153, 153**.

A 20% lighter version of the original color is **243, 196, 172**, and **131, 92, 71** is the 20% darker color. If you saturate the color by 10%, you get **186, 130, 101**, and if you desaturate by 10%, it is **186, 154, 139**.

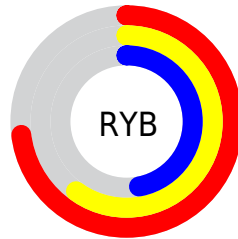
Distribution



Red (73%)

Green (56%)

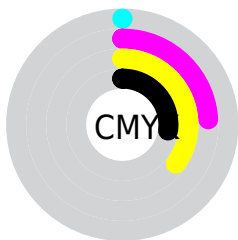
Blue (47%)



Red (73%)

Yellow (60%)

Blue (47%)

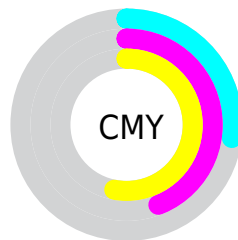


Cyan (0%)

Magenta (24%)

Yellow (35%)

Black (27%)



Cyan (27%)

Magenta (44%)

Yellow (53%)

Brightness & Saturation Gradients

These gradients show how the RGB color 186, 142, 120 changes by changing the brightness by 10 percent. The first figure shows a shift by +10% for each color and the second figure -10%.

Similar to the brightness gradients but the following saturation gradients show a change of the RGB color 186, 142, 120 by changing the saturation by 10% instead.

 186, 142, 120

255, 255, 255


 243, 196, 172

 255, 224, 200

 255, 252, 228

 186, 142, 120

 158, 116, 95

 131, 92, 71

 105, 68, 49

 80, 46, 28

 56, 24, 2


 33, 0, 0

 0, 0, 0

 186, 142, 120

 186, 130, 101

 186, 142, 120

 186, 154, 139

 186, 117, 83

 186, 167, 157

 186, 105, 64

 186, 179, 176

 186, 92, 46

 186, 192, 194

 186, 80, 27

 186, 204, 213

 186, 68, 8

 186, 216, 232

 186, 62, 0

 186, 229, 250

 186, 241, 255

 186, 254, 255

Harmonies

Analogous

The Analogous color harmony consists of three colors that are next to each other on the color wheel.



193, 138, 137



186, 142, 120



171, 149, 112

Triad

The Triadic color harmony groups three colors that are evenly spaced from another and form a triangle on the color wheel.



186, 142, 120



105, 163, 146



149, 148, 188

Complementary

The Complementary color scheme is a pair of colors which are on the opposite of each other on the color wheel.



186, 142, 120



120, 164, 186

Split Complementary

Split-complementary colors differ from the complementary color scheme. The scheme consists of three colors, the original color and two neighbors of the complement color.



120, 155, 191



186, 142, 120



93, 163, 167

Square

The Square scheme is like the rectangle color scheme, but the four colors are evenly spaced on the color wheel.



186, 142, 120



127, 160, 127



98, 160, 183



173, 141, 176

Rectangle

The Rectangle color scheme consists of four colors that form a rectangle on the color wheel.



186, 142, 120



157, 153, 112



98, 160, 183



139, 150, 190

Sweetspot

The Sweet Spot groups the original color and five complimentary colors.



186, 142, 120



242, 224, 216



186, 120, 164



122, 112, 106



250, 250, 250



122, 122, 122

Same Dimension

The Same Dimension uses a secret algorithm to generate beautiful new colors.



186, 142, 120



242, 173, 138



186, 175, 120



92, 86, 83



156, 52, 0



28, 9, 0

Inverse Universe

The Inverse Universe completely reimagines the original color for something new.



120, 164, 186



138, 208, 242



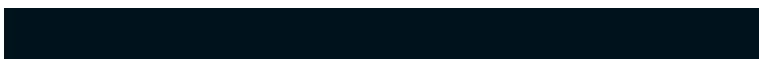
120, 131, 186



83, 89, 92



0, 104, 156



0, 19, 28

Previews

White Background



This preview shows how the RGB color 186, 142, 120 looks on a white background.

Color Contrast Check

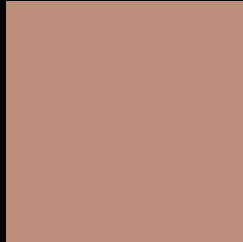
Large Text (above 18pt) WCAG AA × Fail

Any Text WCAG AA × Fail

Large Text (above 18pt) WCAG AAA × Fail

Any Text WCAG AAA × Fail

Black Background



This preview shows how the RGB color 186, 142, 120 looks on a black background.

Color Contrast Check

Large Text (above 18pt) WCAG AA ✓ Pass

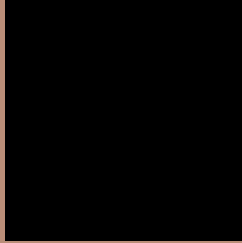
Any Text WCAG AA ✓ Pass

Large Text (above 18pt) WCAG AAA ✓ Pass

Any Text WCAG AAA ✓ Pass

If you want to check with other color combinations, try the [Color Contrast Checker](#).

RGB 186, 142, 120 Background



This preview shows how black text looks on a background with the RGB color 186, 142, 120.



This preview shows how white text looks on a background with the RGB color 186, 142, 120.

Color Blindness Simulation

Color vision deficiency is a very complex topic, and I could not describe the different causes any better than Wikipedia does, so if you want to learn more, you should check out their [article about color blindness](#).

Dichromacy



Original Color
186, 142, 120

Protanopia
161, 151, 124

Deuteranopia
177, 146, 119



Tritanopia
189, 138, 149

Trichromacy



Original Color

186, 142, 120

Protanomaly

170, 148, 123

Deuteranomaly

180, 145, 119

Tritanomaly

188, 139, 138

Monochromacy



Original Color

186, 142, 120

Achromatopsia

153, 153, 153

Achromatomaly

165, 149, 141

CSS Examples

Text

The CSS property to change the color of the text to RGB 186, 142, 120 is called "color". The color property can be set on classes, ids or directly on the HTML element.

This example shows how text in the color `rgb(186, 142, 120)` looks like.

```
.text, #text, p{  
    color:rgb(186, 142, 120)  
}
```

If you want to add a text shadow in that color use the text-shadow property, you can generate a text shadow directly with our [CSS Text Shadow Generator](#).

Here you see how black text with a 4 pixel rgb(186, 142, 120) colored shadow looks like.

```
.shadow{ text-shadow: 4px 4px 2px rgb(186, 142, 120) }
```

Border

The CSS property to change the border of an element to RGB 186, 142, 120 is called "border". The border property can be set on classes, ids or directly on the HTML element.

This example shows the color as border, it can be applied via the CSS property "border" or "border-color".

```
.border, #border, table{ border:4px solid rgb(186, 142, 120) }
```

If only the border color should be changed use the property `border-color`.

```
.border{ border-color:rgb(186, 142, 120) }
```

If you want to add a box shadow in that color use:

Here you see how a box with a 4 pixel `rgb(186, 142, 120)` colored shadow looks like.

```
.boxshadow{ -moz-box-shadow:4px 4px 4px  
4px rgb(186, 142, 120); -webkit-box-  
shadow:4px 4px 4px 4px rgb(186, 142, 120);  
box-shadow:4px 4px 4px 4px rgb(186, 142,  
120) }
```

Background

The CSS property to change the background color of an element to RGB 186, 142, 120 is called "background". The background property can be set on classes, ids or directly on the HTML element.

```
.background, #background, body{  
background: rgb(186, 142, 120) }
```

If only the background color should be changed can be used:

```
.background{ background-color: rgb(186,  
142, 120) }
```

This example shows the color as background, it is applied via the CSS property "background".

To optimize and compress your CSS code, you can use our [online CSS compressor and optimizer](#) based on csstidy. If you want to create a linear or radial gradient as background or border, check our [CSS Gradient Generator](#).

Hey! You found this booklet interesting? Support Converting Colors with the new Membership Option!

The pro membership hides all ads, plus gives you double the colors in the color bucket, and more awesome pro features!

[Learn more, Memberships starting at \\$2.50/m!](#)

**Follow me
on Twitter!**

@ConvertingColor