

Converting Colors

RGB(186, 143, 129)

Have a look what the booklet for
RGB(186, 143, 129) contains.

RGB(186, 143, 129)	3
<i>Conversions</i>	4
<i>Details</i>	6
<i>Harmonies</i>	11
<i>Previews</i>	23
<i>Color Blindness Simulation</i>	26
<i>CSS Examples</i>	29

Color

RGB(186, 143, 129)

Conversions

Conversions Part 1

Format	Color
Hex	BA8F81
RGB	186, 143, 129
RGB Percent	73%, 56%, 51%
CMY	0.2706, 0.4392, 0.4941
CMYK	0.00, 0.23, 0.31, 0.27
HSL	15°, 29%, 62%
HSV	15°, 31%, 73%
XYZ	34.0346, 31.6690, 25.0878
YIQ	154.2610, 30.1220, 4.7620

Conversions

Conversions Part 2

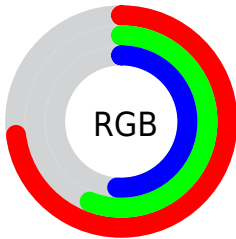
Format	Color
RYB	186, 148, 129
Decimal	12226433
CIELab	63.07, 14.24, 13.71
CIElCh	63, 19.773, 43.912
Yxy	31.6690, 0.3749, 0.3488
Android (android.graphics.Color)	4290416513 (0xFFBA8F81)
YUV	154.2610, -12.4537, 27.8351
Hunter-Lab	56.2752, 9.4731, 12.9609

Details

The RGB color **186, 143, 129** is a light color, and the websafe version is hex **CC9999**. A complement of this color would be **129, 172, 186**, and the grayscale version is **154, 154, 154**.

A 20% lighter version of the original color is **243, 197, 182**, and **132, 93, 80** is the 20% darker color. If you saturate the color by 10%, you get **186, 129, 110**, and if you desaturate by 10%, it is **186, 157, 148**.

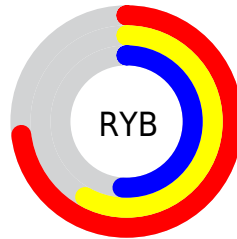
Distribution



Red (73%)

Green (56%)

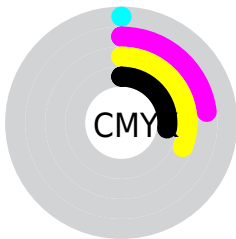
Blue (51%)



Red (73%)

Yellow (58%)

Blue (51%)

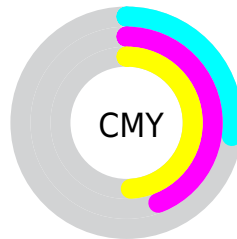


Cyan (0%)

Magenta (23%)

Yellow (31%)

Black (27%)



Cyan (27%)

Magenta (44%)

Yellow (49%)

Brightness & Saturation Gradients

These gradients show how the RGB color 186, 143, 129 changes by changing the brightness by 10 percent. The first figure shows a shift by +10% for each color and the second figure -10%.

Similar to the brightness gradients but the following saturation gradients show a change of the RGB color 186, 143, 129 by changing the saturation by 10% instead.

 186, 143, 129

255, 255, 255

 243, 197, 182

 255, 225, 209

 255, 254, 238

 186, 143, 129

 158, 117, 104

 132, 93, 80

 106, 69, 57

 80, 46, 35

 56, 25, 14

 35, 0, 0

 0, 0, 0

 186, 143, 129

 186, 129, 110

 186, 143, 129

 186, 157, 148

186, 115, 92

186, 171, 166

186, 101, 73

186, 185, 185

186, 87, 55

186, 199, 203

186, 73, 36

186, 213, 222

186, 59, 17

186, 227, 241

186, 46, 0

186, 241, 255

186, 255, 255

Harmonies

Analogous

The Analogous color harmony consists of three colors that are next to each other on the color wheel.



189, 140, 145



186, 143, 129



175, 148, 119

Triad

The Triadic color harmony groups three colors that are evenly spaced from another and form a triangle on the color wheel.



186, 143, 129



118, 162, 142



143, 151, 187

Complementary

The Complementary color scheme is a pair of colors which are on the opposite of each other on the color wheel.



186, 143, 129



129, 172, 186

Split Complementary

Split-complementary colors differ from the complementary color scheme. The scheme consists of three colors, the original color and two neighbors of the complement color.



120, 157, 186



186, 143, 129



105, 163, 160

Square

The Square scheme is like the rectangle color scheme, but the four colors are evenly spaced on the color wheel.



186, 143, 129



137, 159, 127



105, 161, 176



166, 145, 178

Rectangle

The Rectangle color scheme consists of four colors that form a rectangle on the color wheel.



186, 143, 129



164, 152, 118



105, 161, 176



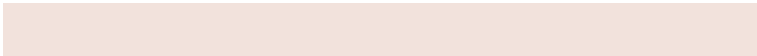
135, 153, 187

Sweetspot

The Sweet Spot groups the original color and five complimentary colors.



186, 143, 129



242, 226, 220



186, 129, 173



122, 112, 109



250, 250, 250



122, 122, 122

Same Dimension

The Same Dimension uses a secret algorithm to generate beautiful new colors.



186, 143, 129



242, 175, 153



186, 171, 129



92, 85, 83



156, 38, 0



28, 7, 0

Inverse Universe

The Inverse Universe completely reimagines the original color for something new.



129, 172, 186



153, 220, 242



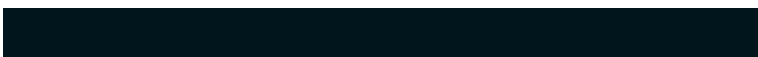
129, 144, 186



83, 90, 92



0, 117, 156



0, 21, 28

Previews

White Background



This preview shows how the RGB color 186, 143, 129 looks on a white background.

Color Contrast Check

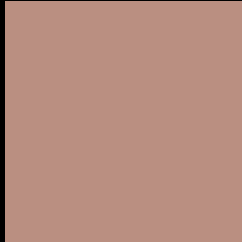
Large Text (above 18pt) WCAG AA × Fail

Any Text WCAG AA × Fail

Large Text (above 18pt) WCAG AAA × Fail

Any Text WCAG AAA × Fail

Black Background



This preview shows how the RGB color 186, 143, 129 looks on a black background.

Color Contrast Check

Large Text (above 18pt) WCAG AA ✓ Pass

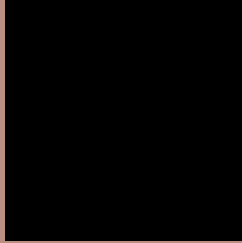
Any Text WCAG AA ✓ Pass

Large Text (above 18pt) WCAG AAA ✓ Pass

Any Text WCAG AAA ✓ Pass

If you want to check with other color combinations, try the [Color Contrast Checker](#).

RGB 186, 143, 129 Background



This preview shows how black text looks on a background with the RGB color 186, 143, 129.



This preview shows how white text looks on a background with the RGB color 186, 143, 129.

Color Blindness Simulation

Color vision deficiency is a very complex topic, and I could not describe the different causes any better than Wikipedia does, so if you want to learn more, you should check out their [article about color blindness](#).

Dichromacy





Tritanopia
188, 140, 151

Trichromacy



Original Color
186, 143, 129

Protanomaly
169, 149, 132

Deuteranomaly
180, 146, 128

Tritanomaly
187, 141, 143

Monochromacy



Original Color
186, 143, 129

Achromatopsia
154, 154, 154

Achromatomaly
166, 150, 145

CSS Examples

Text

The CSS property to change the color of the text to RGB 186, 143, 129 is called "color". The color property can be set on classes, ids or directly on the HTML element.

This example shows how text in the color `rgb(186, 143, 129)` looks like.

```
.text, #text, p{  
    color:rgb(186, 143, 129)  
}
```

If you want to add a text shadow in that color use the text-shadow property, you can generate a text shadow directly with our [CSS Text Shadow Generator](#).

Here you see how black text with a 4 pixel rgb(186, 143, 129) colored shadow looks like.

```
.shadow{ text-shadow: 4px 4px 2px rgb(186, 143, 129) }
```

Border

The CSS property to change the border of an element to RGB 186, 143, 129 is called "border". The border property can be set on classes, ids or directly on the HTML element.

This example shows the color as border, it can be applied via the CSS property "border" or "border-color".

```
.border, #border, table{ border:4px solid rgb(186, 143, 129) }
```

If only the border color should be changed use the property `border-color`.

```
.border{ border-color:rgb(186, 143, 129) }
```

If you want to add a box shadow in that color use:

Here you see how a box with a 4 pixel `rgb(186, 143, 129)` colored shadow looks like.

```
.boxshadow{ -moz-box-shadow:4px 4px 4px 4px rgb(186, 143, 129); -webkit-box-shadow:4px 4px 4px 4px rgb(186, 143, 129); box-shadow:4px 4px 4px 4px rgb(186, 143, 129) }
```

Background

The CSS property to change the background color of an element to RGB 186, 143, 129 is called "background". The background property can be set on classes, ids or directly on the HTML element.

```
.background, #background, body{  
background: rgb(186, 143, 129) }
```

If only the background color should be changed can be used:

```
.background{ background-color: rgb(186,  
143, 129) }
```

This example shows the color as background, it is applied via the CSS property "background".

To optimize and compress your CSS code, you can use our [online CSS compressor and optimizer](#) based on csstidy. If you want to create a linear or radial gradient as background or border, check our [CSS Gradient Generator](#).

Hey! You found this booklet interesting? Support Converting Colors with the new Membership Option!

The pro membership hides all ads, plus gives you double the colors in the color bucket, and more awesome pro features!

[Learn more, Memberships starting at \\$2.50/m!](#)

**Follow me
on Twitter!**

@ConvertingColor