

Converting Colors

RGB(187, 156, 151)

Have a look what the booklet for
RGB(187, 156, 151) contains.

RGB(187, 156, 151)	3
<i>Conversions</i>	4
<i>Details</i>	6
<i>Harmonies</i>	11
<i>Previews</i>	23
<i>Color Blindness Simulation</i>	26
<i>CSS Examples</i>	29

Color

RGB(187, 156, 151)

Conversions

Conversions Part 1

Format	Color
Hex	BB9C97
RGB	187, 156, 151
RGB Percent	73%, 61%, 59%
CMY	0.2667, 0.3882, 0.4078
CMYK	0.00, 0.17, 0.19, 0.27
HSL	8°, 21%, 66%
HSV	8°, 19%, 73%
XYZ	37.9679, 36.5761, 34.3369
YIQ	164.6990, 20.0810, 5.0170

Conversions

Conversions Part 2

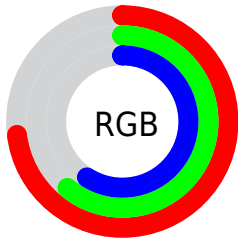
Format	Color
RYB	187, 157, 151
Decimal	12295319
CIELab	66.96, 10.66, 6.90
CIElCh	67, 12.699, 32.900
Yxy	36.5761, 0.3487, 0.3359
Android (android.graphics.Color)	4290485399 (0xFFBB9C97)
YUV	164.6990, -6.7536, 19.5580
Hunter-Lab	60.4782, 6.2246, 8.6724

Details

The RGB color **187, 156, 151** is a light color, and the websafe version is hex **CC9999**. A complement of this color would be **151, 182, 187**, and the grayscale version is **165, 165, 165**.

A 20% lighter version of the original color is **244, 211, 205**, and **133, 105, 100** is the 20% darker color. If you saturate the color by 10%, you get **187, 140, 132**, and if you desaturate by 10%, it is **187, 172, 170**.

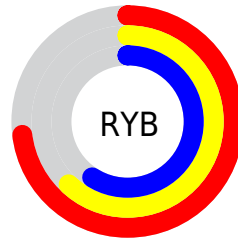
Distribution



Red (73%)

Green (61%)

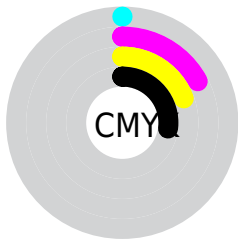
Blue (59%)



Red (73%)

Yellow (62%)

Blue (59%)

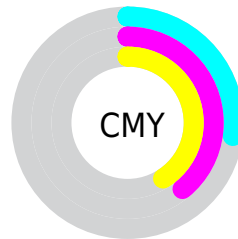


Cyan (0%)

Magenta (17%)

Yellow (19%)

Black (27%)



Cyan (27%)

Magenta (39%)

Yellow (41%)

Brightness & Saturation Gradients

These gradients show how the RGB color 187, 156, 151 changes by changing the brightness by 10 percent. The first figure shows a shift by +10% for each color and the second figure -10%.

Similar to the brightness gradients but the following saturation gradients show a change of the RGB color 187, 156, 151 by changing the saturation by 10% instead.


 187, 156, 151

255, 255, 255

 244, 211, 205

 255, 239, 233

 187, 156, 151

 160, 130, 125

 133, 105, 100

 108, 81, 76

 83, 58, 54

 59, 36, 32

 37, 15, 9


 0, 0, 0

 187, 156, 151

 187, 140, 132

 187, 156, 151

 187, 172, 170

 187, 124, 114

 187, 188, 188

 187, 108, 95

 187, 204, 207

 187, 92, 76

 187, 220, 226

 187, 75, 57

 187, 237, 245

 187, 59, 39

 187, 253, 255

 187, 43, 20

 187, 255, 255

 187, 27, 1

 187, 26, 0

Harmonies

Analogous

The Analogous color harmony consists of three colors that are next to each other on the color wheel.



186, 155, 162



187, 156, 151



181, 159, 143

Triad

The Triadic color harmony groups three colors that are evenly spaced from another and form a triangle on the color wheel.



187, 156, 151



146, 169, 152



152, 164, 185

Complementary

The Complementary color scheme is a pair of colors which are on the opposite of each other on the color wheel.



187, 156, 151



151, 182, 187

Split Complementary

Split-complementary colors differ from the complementary color scheme. The scheme consists of three colors, the original color and two neighbors of the complement color.



140, 167, 183



187, 156, 151



136, 170, 164

Square

The Square scheme is like the rectangle color scheme, but the four colors are evenly spaced on the color wheel.



187, 156, 151



158, 166, 144



134, 169, 175



167, 160, 182

Rectangle

The Rectangle color scheme consists of four colors that form a rectangle on the color wheel.



187, 156, 151



175, 161, 140



134, 169, 175



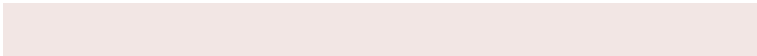
147, 165, 185

Sweetspot

The Sweet Spot groups the original color and five complimentary colors.



187, 156, 151



242, 230, 228



187, 151, 182



122, 115, 114



250, 250, 250



122, 122, 122

Same Dimension

The Same Dimension uses a secret algorithm to generate beautiful new colors.



187, 156, 151



242, 194, 187



187, 174, 151



94, 86, 85



158, 22, 0



31, 4, 0

Inverse Universe

The Inverse Universe completely reimagines the original color for something new.



151, 182, 187



187, 235, 242



151, 164, 187



85, 93, 94



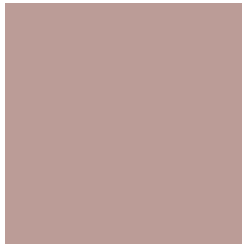
0, 136, 158



0, 26, 31

Previews

White Background



This preview shows how the RGB color 187, 156, 151 looks on a white background.

Color Contrast Check

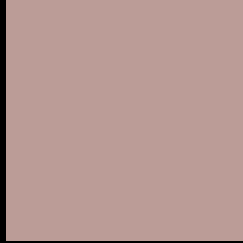
Large Text (above 18pt) WCAG AA × Fail

Any Text WCAG AA × Fail

Large Text (above 18pt) WCAG AAA × Fail

Any Text WCAG AAA × Fail

Black Background



This preview shows how the RGB color 187, 156, 151 looks on a black background.

Color Contrast Check

Large Text (above 18pt) WCAG AA ✓ Pass

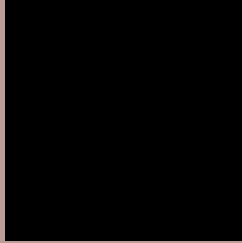
Any Text WCAG AA ✓ Pass

Large Text (above 18pt) WCAG AAA ✓ Pass

Any Text WCAG AAA ✓ Pass

If you want to check with other color combinations, try the [Color Contrast Checker](#).

RGB 187, 156, 151 Background



This preview shows how black text looks on a background with the RGB color 187, 156, 151.



This preview shows how white text looks on a background with the RGB color 187, 156, 151.

Color Blindness Simulation

Color vision deficiency is a very complex topic, and I could not describe the different causes any better than Wikipedia does, so if you want to learn more, you should check out their [article about color blindness](#).

Dichromacy



Original Color
187, 156, 151

Protanopia
168, 162, 154

Deuteranopia
183, 157, 151



Tritanopia
189, 154, 166

Trichromacy



Original Color
187, 156, 151

Protanomaly
175, 160, 153

Deuteranomaly
184, 157, 151

Tritanomaly
188, 155, 161

Monochromacy



Original Color
187, 156, 151

Achromatopsia
165, 165, 165

Achromatomaly
173, 162, 160

CSS Examples

Text

The CSS property to change the color of the text to RGB 187, 156, 151 is called "color". The color property can be set on classes, ids or directly on the HTML element.

This example shows how text in the color rgb(187, 156, 151) looks like.

```
.text, #text, p{  
    color:rgb(187, 156, 151)  
}
```

If you want to add a text shadow in that color use the text-shadow property, you can generate a text shadow directly with our [CSS Text Shadow Generator](#).

Here you see how black text with a 4 pixel rgb(187, 156, 151) colored shadow looks like.

```
.shadow{ text-shadow: 4px 4px 2px rgb(187, 156, 151) }
```

Border

The CSS property to change the border of an element to RGB 187, 156, 151 is called "border". The border property can be set on classes, ids or directly on the HTML element.

This example shows the color as border, it can be applied via the CSS property "border" or "border-color".

```
.border, #border, table{ border:4px solid rgb(187, 156, 151) }
```

If only the border color should be changed use the property `border-color`.

```
.border{ border-color:rgb(187, 156, 151) }
```

If you want to add a box shadow in that color use:

Here you see how a box with a 4 pixel `rgb(187, 156, 151)` colored shadow looks like.

```
.boxshadow{ -moz-box-shadow:4px 4px 4px  
4px rgb(187, 156, 151); -webkit-box-  
shadow:4px 4px 4px 4px rgb(187, 156, 151);  
box-shadow:4px 4px 4px 4px rgb(187, 156,  
151) }
```

Background

The CSS property to change the background color of an element to RGB 187, 156, 151 is called "background". The background property can be set on classes, ids or directly on the HTML element.

```
.background, #background, body{  
background: rgb(187, 156, 151) }
```

If only the background color should be changed can be used:

```
.background{ background-color: rgb(187,  
156, 151) }
```

This example shows the color as background, it is applied via the CSS property "background".

To optimize and compress your CSS code, you can use our [online CSS compressor and optimizer](#) based on csstidy. If you want to create a linear or radial gradient as background or border, check our [CSS Gradient Generator](#).

Hey! You found this booklet interesting? Support Converting Colors with the new Membership Option!

The pro membership hides all ads, plus gives you double the colors in the color bucket, and more awesome pro features!

[Learn more, Memberships starting at \\$2.50/m!](#)

**Follow me
on Twitter!**

@ConvertingColor