

Converting Colors

RGB(188, 139, 139)

Have a look what the booklet for
RGB(188, 139, 139) contains.

| | |
|--|----|
| RGB(188, 139, 139) | 3 |
| <i>Conversions</i> | 4 |
| <i>Details</i> | 6 |
| <i>Harmonies</i> | 11 |
| <i>Previews</i> | 23 |
| <i>Color Blindness Simulation</i> | 26 |
| <i>CSS Examples</i> | 29 |

Color

RGB(188, 139, 139)

Conversions

Conversions Part 1

| Format | Color |
|-------------|----------------------------|
| Hex | BC8B8B |
| RGB | 188, 139, 139 |
| RGB Percent | 74%, 55%, 55% |
| CMY | 0.2627, 0.4549, 0.4549 |
| CMYK | 0.00, 0.26, 0.26, 0.26 |
| HSL | 0°, 27%, 64% |
| HSV | 0°, 26%, 74% |
| XYZ | 34.6319, 31.0207, 28.5884 |
| YIQ | 153.6510, 29.2040, 10.3880 |

Conversions

Conversions Part 2

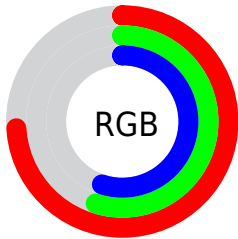
| Format | Color |
|-------------------------------------|--|
| RYB | 188, 139, 139 |
| Decimal | 12356491 |
| CIELab | 62.53, 18.65, 7.32 |
| CIELCh | 63, 20.036, 21.429 |
| Yxy | 31.0207, 0.3675, 0.3292 |
| Android (android.graphics.Color) | 4290546571 (0xFFBC8B8B) |
| YUV | 153.6510, -7.2229, 30.1241 |
| Hunter-Lab | 55.6962, 13.5228, 8.5543 |

Details

The RGB color **188, 139, 139** is a light color, and the websafe version is hex **CC9999**. A complement of this color would be **139, 188, 188**, and the grayscale version is **154, 154, 154**.

A 20% lighter version of the original color is **245, 193, 192**, and **134, 89, 89** is the 20% darker color. If you saturate the color by 10%, you get **188, 120, 120**, and if you desaturate by 10%, it is **188, 158, 158**.

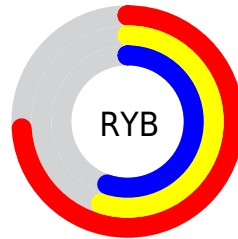
Distribution



Red (74%)

Green (55%)

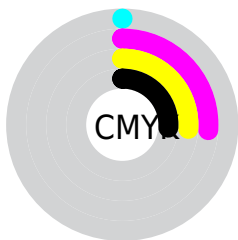
Blue (55%)



Red (74%)

Yellow (55%)

Blue (55%)

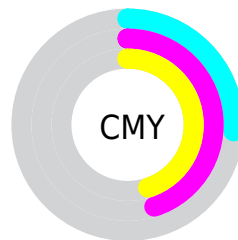


Cyan (0%)

Magenta (26%)

Yellow (26%)

Black (26%)



Cyan (26%)

Magenta (45%)

Yellow (45%)

Brightness & Saturation Gradients

These gradients show how the RGB color 188, 139, 139 changes by changing the brightness by 10 percent. The first figure shows a shift by +10% for each color and the second figure -10%.

Similar to the brightness gradients but the following saturation gradients show a change of the RGB color 188, 139, 139 by changing the saturation by 10% instead.

 188, 139, 139

255, 255, 255

 245, 193, 192

 255, 221, 220

 255, 249, 249

 188, 139, 139

 160, 113, 114

 134, 89, 89

 108, 65, 66


 82, 42, 44

 58, 21, 23

 38, 0, 0

 0, 0, 0

 188, 139, 139

 188, 120, 120

 188, 139, 139

 188, 158, 158

 188, 101, 101

 188, 177, 177

 188, 83, 83

 188, 195, 195

 188, 64, 64

 188, 214, 214

 188, 45, 45

 188, 233, 233

 188, 26, 26

 188, 252, 252

 188, 7, 7

 188, 255, 255

 188, 0, 0

Harmonies

Analogous

The Analogous color harmony consists of three colors that are next to each other on the color wheel.



184, 139, 157



188, 139, 139



183, 143, 124

Triad

The Triadic color harmony groups three colors that are evenly spaced from another and form a triangle on the color wheel.



188, 139, 139



131, 159, 129



124, 154, 186

Complementary

The Complementary color scheme is a pair of colors which are on the opposite of each other on the color wheel.



188, 139, 139



139, 188, 188

Split Complementary

Split-complementary colors differ from the complementary color scheme. The scheme consists of three colors, the original color and two neighbors of the complement color.



106, 159, 178



188, 139, 139



112, 161, 145

Square

The Square scheme is like the rectangle color scheme, but the four colors are evenly spaced on the color wheel.



188, 139, 139



151, 154, 118



102, 161, 163



147, 148, 184

Rectangle

The Rectangle color scheme consists of four colors that form a rectangle on the color wheel.



188, 139, 139



175, 146, 118



102, 161, 163



116, 156, 184

Sweetspot

The Sweet Spot groups the original color and five complimentary colors.



188, 139, 139



245, 225, 225



188, 139, 188



122, 110, 110



250, 250, 250



122, 122, 122

Same Dimension

The Same Dimension uses a secret algorithm to generate beautiful new colors.



188, 139, 139



245, 169, 169



188, 164, 139



94, 85, 85



158, 0, 0



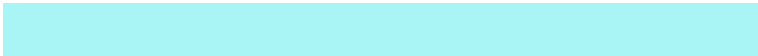
31, 0, 0

Inverse Universe

The Inverse Universe completely reimagines the original color for something new.



139, 188, 188



169, 245, 245



139, 164, 188



85, 94, 94



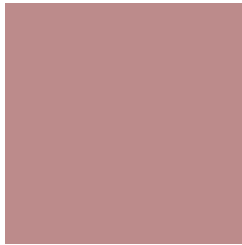
0, 158, 158



0, 31, 31

Previews

White Background



This preview shows how the RGB color 188, 139, 139 looks on a white background.

Color Contrast Check

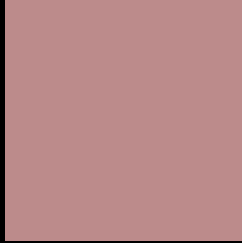
Large Text (above 18pt) WCAG AA × Fail

Any Text WCAG AA × Fail

Large Text (above 18pt) WCAG AAA × Fail

Any Text WCAG AAA × Fail

Black Background



This preview shows how the RGB color 188, 139, 139 looks on a black background.

Color Contrast Check

Large Text (above 18pt) WCAG AA ✓ Pass

Any Text WCAG AA ✓ Pass

Large Text (above 18pt) WCAG AAA ✓ Pass

Any Text WCAG AAA ✓ Pass

If you want to check with other color combinations, try the [Color Contrast Checker](#).

RGB 188, 139, 139 Background



This preview shows how black text looks on a background with the RGB color 188, 139, 139.



This preview shows how white text looks on a background with the RGB color 188, 139, 139.

Color Blindness Simulation

Color vision deficiency is a very complex topic, and I could not describe the different causes any better than Wikipedia does, so if you want to learn more, you should check out their [article about color blindness](#).


Dichromacy



Original Color
188, 139, 139

Protanopia
156, 151, 145

Deuteranopia
171, 146, 138



Tritanopia
189, 138, 148

Trichromacy



Original Color
188, 139, 139

Protanomaly
168, 147, 143

Deuteranomaly
177, 143, 138

Tritanomaly
189, 138, 145

Monochromacy



Original Color
188, 139, 139

Achromatopsia
154, 154, 154

Achromatomaly
166, 149, 149

CSS Examples

Text

The CSS property to change the color of the text to RGB 188, 139, 139 is called "color". The color property can be set on classes, ids or directly on the HTML element.

This example shows how text in the color `rgb(188, 139, 139)` looks like.

```
.text, #text, p{  
    color:rgb(188, 139, 139)  
}
```

If you want to add a text shadow in that color use the text-shadow property, you can generate a text shadow directly with our [CSS Text Shadow Generator](#).

Here you see how black text with a 4 pixel rgb(188, 139, 139) colored shadow looks like.

```
.shadow{ text-shadow: 4px 4px 2px rgb(188, 139, 139) }
```

Border

The CSS property to change the border of an element to RGB 188, 139, 139 is called "border". The border property can be set on classes, ids or directly on the HTML element.

This example shows the color as border, it can be applied via the CSS property "border" or "border-color".

```
.border, #border, table{ border:4px solid rgb(188, 139, 139) }
```

If only the border color should be changed use the property `border-color`.

```
.border{ border-color:rgb(188, 139, 139) }
```

If you want to add a box shadow in that color use:

Here you see how a box with a 4 pixel `rgb(188, 139, 139)` colored shadow looks like.

```
.boxshadow{ -moz-box-shadow:4px 4px 4px  
4px rgb(188, 139, 139); -webkit-box-  
shadow:4px 4px 4px 4px rgb(188, 139, 139);  
box-shadow:4px 4px 4px 4px rgb(188, 139,  
139) }
```

Background

The CSS property to change the background color of an element to RGB 188, 139, 139 is called "background". The background property can be set on classes, ids or directly on the HTML element.

```
.background, #background, body{  
background: rgb(188, 139, 139) }
```

If only the background color should be changed can be used:

```
.background{ background-color: rgb(188,  
139, 139) }
```

This example shows the color as background, it is applied via the CSS property "background".

To optimize and compress your CSS code, you can use our [online CSS compressor and optimizer](#) based on csstidy. If you want to create a linear or radial gradient as background or border, check our [CSS Gradient Generator](#).

Hey! You found this booklet interesting? Support Converting Colors with the new Membership Option!

The pro membership hides all ads, plus gives you double the colors in the color bucket, and more awesome pro features!

[Learn more, Memberships starting at \\$2.50/m!](#)

**Follow me
on Twitter!**

@ConvertingColor