

Converting Colors

RGB(188, 152, 148)

Have a look what the booklet for
RGB(188, 152, 148) contains.

RGB(188, 152, 148)	3
<i>Conversions</i>	4
<i>Details</i>	6
<i>Harmonies</i>	11
<i>Previews</i>	23
<i>Color Blindness Simulation</i>	26
<i>CSS Examples</i>	29

Color

RGB(188, 152, 148)

Conversions

Conversions Part 1

Format	Color
Hex	BC9894
RGB	188, 152, 148
RGB Percent	74%, 60%, 58%
CMY	0.2627, 0.4039, 0.4196
CMYK	0.00, 0.19, 0.21, 0.26
HSL	6°, 23%, 66%
HSV	6°, 21%, 74%
XYZ	37.3126, 35.2860, 32.8613
YIQ	162.3080, 22.7400, 6.3880

Conversions

Conversions Part 2

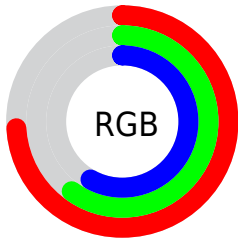
Format	Color
R _Y B	188, 152, 148
Decimal	12359828
CIE Lab	65.97, 12.79, 7.17
CIE LCh	66, 14.661, 29.298
Yxy	35.2860, 0.3538, 0.3346
Android (android.graphics.Color)	4290549908 (0xFFBC9894)
YUV	162.3080, -7.0538, 22.5319
Hunter-Lab	59.4020, 8.1689, 8.7821

Details

The RGB color **188, 152, 148** is a light color, and the websafe version is hex **CC9999**. A complement of this color would be **148, 184, 188**, and the grayscale version is **162, 162, 162**.

A 20% lighter version of the original color is **245, 206, 202**, and **134, 101, 97** is the 20% darker color. If you saturate the color by 10%, you get **188, 135, 129**, and if you desaturate by 10%, it is **188, 169, 167**.

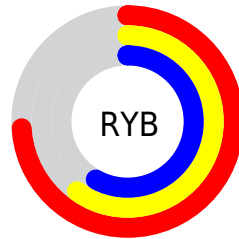
Distribution



Red (74%)

Green (60%)

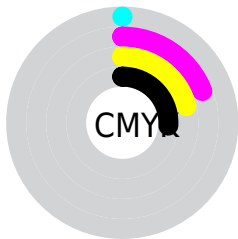
Blue (58%)



Red (74%)

Yellow (60%)

Blue (58%)

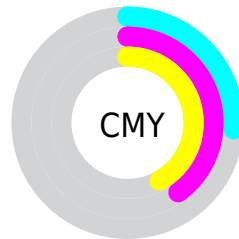


Cyan (0%)

Magenta (19%)

Yellow (21%)

Black (26%)



Cyan (26%)

Magenta (40%)

Yellow (42%)

Brightness & Saturation Gradients

These gradients show how the RGB color 188, 152, 148 changes by changing the brightness by 10 percent. The first figure shows a shift by +10% for each color and the second figure -10%.

Similar to the brightness gradients but the following saturation gradients show a change of the RGB color 188, 152, 148 by changing the saturation by 10% instead.

 188, 152, 148

255, 255, 255

 245, 206, 202


 255, 235, 230

 188, 152, 148

 161, 126, 122

 134, 101, 97

 108, 77, 74

 83, 54, 51

 60, 32, 30

 38, 11, 5

 0, 0, 0

 188, 152, 148

 188, 135, 129

 188, 152, 148

 188, 169, 167

 188, 118, 110

 188, 186, 186

 188, 101, 92

 188, 203, 204

 188, 84, 73

 188, 220, 223

 188, 67, 54

 188, 237, 242

 188, 50, 35

 188, 254, 255

 188, 34, 16

 188, 255, 255

 188, 19, 0

Harmonies

Analogous

The Analogous color harmony consists of three colors that are next to each other on the color wheel.



186, 151, 161



188, 152, 148



182, 155, 138

Triad

The Triadic color harmony groups three colors that are evenly spaced from another and form a triangle on the color wheel.



188, 152, 148



142, 167, 147



145, 162, 186

Complementary

The Complementary color scheme is a pair of colors which are on the opposite of each other on the color wheel.



188, 152, 148



148, 184, 188

Split Complementary

Split-complementary colors differ from the complementary color scheme. The scheme consists of three colors, the original color and two neighbors of the complement color.



132, 165, 182



188, 152, 148



130, 168, 159

Square

The Square scheme is like the rectangle color scheme, but the four colors are evenly spaced on the color wheel.



188, 152, 148



157, 163, 137



126, 168, 173



162, 157, 183

Rectangle

The Rectangle color scheme consists of four colors that form a rectangle on the color wheel.



188, 152, 148



175, 158, 135



126, 168, 173



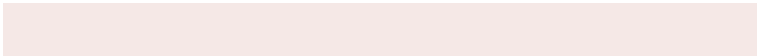
140, 163, 186

Sweetspot

The Sweet Spot groups the original color and five complimentary colors.



188, 152, 148



245, 232, 230



188, 148, 184



122, 115, 114



250, 250, 250



122, 122, 122

Same Dimension

The Same Dimension uses a secret algorithm to generate beautiful new colors.



188, 152, 148



245, 188, 181



188, 171, 148



94, 86, 85



158, 16, 0



31, 3, 0

Inverse Universe

The Inverse Universe completely reimagines the original color for something new.



148, 184, 188



181, 238, 245



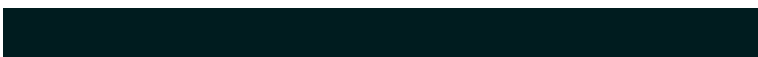
148, 165, 188



85, 93, 94



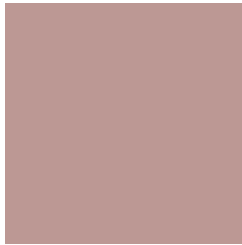
0, 142, 158



0, 28, 31

Previews

White Background



This preview shows how the RGB color 188, 152, 148 looks on a white background.

Color Contrast Check

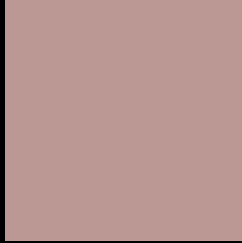
Large Text (above 18pt) WCAG AA × Fail

Any Text WCAG AA × Fail

Large Text (above 18pt) WCAG AAA × Fail

Any Text WCAG AAA × Fail

Black Background



This preview shows how the RGB color 188, 152, 148 looks on a black background.

Color Contrast Check

Large Text (above 18pt) WCAG AA ✓ Pass

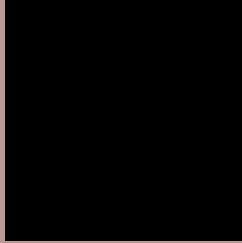
Any Text WCAG AA ✓ Pass

Large Text (above 18pt) WCAG AAA ✓ Pass

Any Text WCAG AAA ✓ Pass

If you want to check with other color combinations, try the [Color Contrast Checker](#).

RGB 188, 152, 148 Background



This preview shows how black text looks on a background with the RGB color 188, 152, 148.



This preview shows how white text looks on a background with the RGB color 188, 152, 148.

Color Blindness Simulation

Color vision deficiency is a very complex topic, and I could not describe the different causes any better than Wikipedia does, so if you want to learn more, you should check out their [article about color blindness](#).

Dichromacy



Original Color


188, 152, 148

Protanopia

165, 160, 152

Deuteranopia

181, 155, 147



Tritanopia
190, 150, 162

Trichromacy



Original Color
188, 152, 148

Protanomaly
173, 157, 151

Deuteranomaly
184, 154, 147

Tritanomaly
189, 151, 157

Monochromacy



Original Color
188, 152, 148

Achromatopsia
162, 162, 162

Achromatomaly
171, 158, 157

CSS Examples

Text

The CSS property to change the color of the text to RGB 188, 152, 148 is called "color". The color property can be set on classes, ids or directly on the HTML element.

This example shows how text in the color `rgb(188, 152, 148)` looks like.

```
.text, #text, p{  
    color:rgb(188, 152, 148)  
}
```

If you want to add a text shadow in that color use the text-shadow property, you can generate a text shadow directly with our [CSS Text Shadow Generator](#).

Here you see how black text with a 4 pixel rgb(188, 152, 148) colored shadow looks like.

```
.shadow{ text-shadow: 4px 4px 2px rgb(188, 152, 148) }
```

Border

The CSS property to change the border of an element to RGB 188, 152, 148 is called "border". The border property can be set on classes, ids or directly on the HTML element.

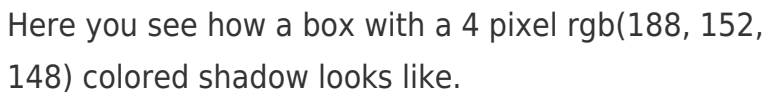
This example shows the color as border, it can be applied via the CSS property "border" or "border-color".

```
.border, #border, table{ border:4px solid rgb(188, 152, 148) }
```

If only the border color should be changed use the property `border-color`.

```
.border{ border-color:rgb(188, 152, 148) }
```

If you want to add a box shadow in that color use:



Here you see how a box with a 4 pixel `rgb(188, 152, 148)` colored shadow looks like.

```
.boxshadow{ -moz-box-shadow:4px 4px 4px 4px rgb(188, 152, 148); -webkit-box-shadow:4px 4px 4px 4px rgb(188, 152, 148); box-shadow:4px 4px 4px 4px rgb(188, 152, 148) }
```

Background

The CSS property to change the background color of an element to RGB 188, 152, 148 is called "background". The background property can be set on classes, ids or directly on the HTML element.

```
.background, #background, body{  
background: rgb(188, 152, 148) }
```

If only the background color should be changed can be used:

```
.background{ background-color: rgb(188,  
152, 148) }
```

This example shows the color as background, it is applied via the CSS property "background".

To optimize and compress your CSS code, you can use our [online CSS compressor and optimizer](#) based on csstidy. If you want to create a linear or radial gradient as background or border, check our [CSS Gradient Generator](#).

Hey! You found this booklet interesting? Support Converting Colors with the new Membership Option!

The pro membership hides all ads, plus gives you double the colors in the color bucket, and more awesome pro features!

[Learn more, Memberships starting at \\$2.50/m!](#)

**Follow me
on Twitter!**

@ConvertingColor