

Converting Colors

RGB(189, 137, 97)

Have a look what the booklet for
RGB(189, 137, 97) contains.

RGB(189, 137, 97)	3
<i>Conversions</i>	4
<i>Details</i>	6
<i>Harmonies</i>	11
<i>Previews</i>	23
<i>Color Blindness Simulation</i>	26
<i>CSS Examples</i>	29

Color

RGB(189, 137, 97)

Conversions

Conversions Part 1

Format	Color
Hex	BD8961
RGB	189, 137, 97
RGB Percent	74%, 54%, 38%
CMY	0.2588, 0.4627, 0.6196
CMYK	0.00, 0.28, 0.49, 0.26
HSL	26°, 41%, 56%
HSV	26°, 49%, 74%
XYZ	32.0896, 29.5732, 15.3262
YIQ	147.9880, 43.8320, -1.4160

Conversions

Conversions Part 2

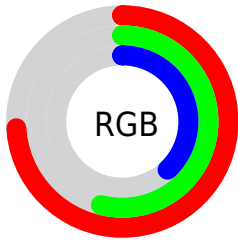
Format	Color
R_{YB}	189, 168, 97
Decimal	12421473
CIE _{Lab}	61.28, 15.04, 29.21
CIE _{LCh}	61, 32.855, 62.761
Yxy	29.5732, 0.4168, 0.3841
Android (android.graphics.Color)	4290611553 (0xFFBD8961)
YUV	147.9880, -25.1371, 35.9675
Hunter-Lab	54.3813, 10.1631, 21.3573

Details

The RGB color **189, 137, 97** is a dark color, and the websafe version is hex **CC9966**. A complement of this color would be **97, 149, 189**, and the grayscale version is **148, 148, 148**.

A 20% lighter version of the original color is **247, 190, 148**, and **133, 87, 50** is the 20% darker color. If you saturate the color by 10%, you get **189, 126, 78**, and if you desaturate by 10%, it is **189, 148, 116**.

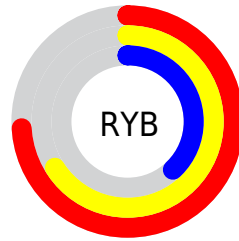
Distribution



Red (74%)

Green (54%)

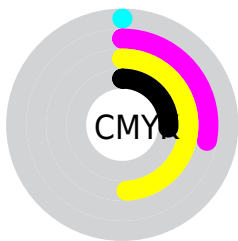
Blue (38%)



Red (74%)

Yellow (66%)

Blue (38%)

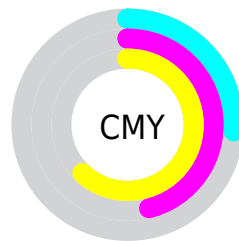


Cyan (0%)

Magenta (28%)

Yellow (49%)

Black (26%)



Cyan (26%)

Magenta (46%)

Yellow (62%)


Brightness & Saturation Gradients


These gradients show how the RGB color 189, 137, 97 changes by changing the brightness by 10 percent. The first figure shows a shift by +10% for each color and the second figure -10%.

Similar to the brightness gradients but the following saturation gradients show a change of the RGB color 189, 137, 97 by changing the saturation by 10% instead.

 189, 137, 97  189, 137, 97

255, 255, 255  161, 112, 73

 247, 190, 148  133, 87, 50

 255, 218, 175  106, 64, 27

 255, 247, 202  80, 41, 3

 255, 255, 231  54, 20, 0

 32, 0, 0

 0, 0, 0

 189, 137, 97  189, 137, 97

 189, 126, 78  189, 148, 116

189, 116, 59

189, 158, 135

189, 105, 40

189, 169, 154

189, 94, 21

189, 180, 173

189, 84, 2

189, 190, 192

189, 82, 0

189, 201, 210

189, 212, 229

189, 222, 248

189, 233, 255

Harmonies

Analogous

The Analogous color harmony consists of three colors that are next to each other on the color wheel.



203, 128, 118



189, 137, 97



165, 147, 89

Triad

The Triadic color harmony groups three colors that are evenly spaced from another and form a triangle on the color wheel.



189, 137, 97



61, 164, 150



155, 139, 197

Complementary

The Complementary color scheme is a pair of colors which are on the opposite of each other on the color wheel.



189, 137, 97



97, 149, 189

Split Complementary

Split-complementary colors differ from the complementary color scheme. The scheme consists of three colors, the original color and two neighbors of the complement color.



111, 150, 206



189, 137, 97



32, 163, 178

Square

The Square scheme is like the rectangle color scheme, but the four colors are evenly spaced on the color wheel.



189, 137, 97



99, 161, 120



62, 158, 199



187, 130, 175

Rectangle

The Rectangle color scheme consists of four colors that form a rectangle on the color wheel.



189, 137, 97



145, 153, 93



62, 158, 199



141, 143, 201

Sweetspot

The Sweet Spot groups the original color and five complimentary colors.



189, 137, 97



245, 224, 208



189, 97, 149



122, 110, 100



250, 250, 250



122, 122, 122

Same Dimension

The Same Dimension uses a secret algorithm to generate beautiful new colors.



189, 137, 97



245, 165, 103



189, 183, 97



94, 89, 85



158, 69, 0



31, 13, 0

Inverse Universe

The Inverse Universe completely reimagines the original color for something new.



97, 149, 189



103, 183, 245



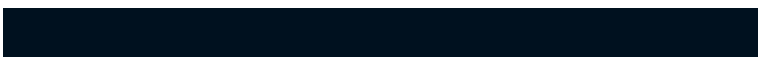
97, 103, 189



85, 90, 94



0, 89, 158



0, 17, 31

Previews

White Background



This preview shows how the RGB color 189, 137, 97 looks on a white background.

Color Contrast Check

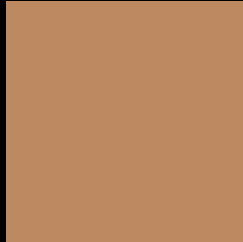
Large Text (above 18pt) WCAG AA ✓ Pass

Any Text WCAG AA ✗ Fail

Large Text (above 18pt) WCAG AAA ✗ Fail

Any Text WCAG AAA ✗ Fail

Black Background



This preview shows how the RGB color 189, 137, 97 looks on a black background.

Color Contrast Check

Large Text (above 18pt) WCAG AA ✓ Pass

Any Text WCAG AA ✓ Pass

Large Text (above 18pt) WCAG AAA ✓ Pass

Any Text WCAG AAA × Fail

If you want to check with other color combinations, try the [Color Contrast Checker](#).

RGB 189, 137, 97 Background



This preview shows how black text looks on a background with the RGB color 189, 137, 97.



This preview shows how white text looks on a background with the RGB color 189, 137, 97.

Color Blindness Simulation

Color vision deficiency is a very complex topic, and I could not describe the different causes any better than Wikipedia does, so if you want to learn more, you should check out their [article about color blindness](#).


Dichromacy



Original Color
189, 137, 97

Protanopia
160, 148, 102

Deuteranopia
178, 142, 96



Tritanopia
193, 131, 141

Trichromacy



Original Color
189, 137, 97

Protanomaly
171, 144, 100

Deuteranomaly
182, 140, 96

Tritanomaly
192, 133, 125

Monochromacy



Original Color
189, 137, 97

Achromatopsia
148, 148, 148

Achromatomaly
163, 144, 129

CSS Examples

Text

The CSS property to change the color of the text to RGB 189, 137, 97 is called "color". The color property can be set on classes, ids or directly on the HTML element.

This example shows how text in the color `rgb(189, 137, 97)` looks like.

```
.text, #text, p{  
    color:rgb(189, 137, 97)  
}
```

If you want to add a text shadow in that color use the text-shadow property, you can generate a text shadow directly with our [CSS Text Shadow Generator](#).

Here you see how black text with a 4 pixel rgb(189, 137, 97) colored shadow looks like.

```
.shadow{ text-shadow: 4px 4px 2px rgb(189, 137, 97) }
```

Border

The CSS property to change the border of an element to RGB 189, 137, 97 is called "border". The border property can be set on classes, ids or directly on the HTML element.

This example shows the color as border, it can be applied via the CSS property "border" or "border-color".

```
.border, #border, table{ border:4px solid rgb(189, 137, 97) }
```

If only the border color should be changed use the property border-color.

```
.border{ border-color:rgb(189, 137, 97) }
```

If you want to add a box shadow in that color use:

Here you see how a box with a 4 pixel rgb(189, 137, 97) colored shadow looks like.

```
.boxshadow{ -moz-box-shadow:4px 4px 4px  
4px rgb(189, 137, 97); -webkit-box-  
shadow:4px 4px 4px 4px rgb(189, 137, 97);  
box-shadow:4px 4px 4px 4px rgb(189, 137,  
97) }
```

Background

The CSS property to change the background color of an element to RGB 189, 137, 97 is called "background". The background property can be set on classes, ids or directly on the HTML element.

```
.background, #background, body{  
background: rgb(189, 137, 97) }
```

If only the background color should be changed can be used:

```
.background{ background-color: rgb(189,  
137, 97) }
```

This example shows the color as background, it is applied via the CSS property "background".

To optimize and compress your CSS code, you can use our [online CSS compressor and optimizer](#) based on csstidy. If you want to create a linear or radial gradient as background or border, check our [CSS Gradient Generator](#).

Hey! You found this booklet interesting? Support Converting Colors with the new Membership Option!

The pro membership hides all ads, plus gives you double the colors in the color bucket, and more awesome pro features!

[Learn more, Memberships starting at \\$2.50/m!](#)

**Follow me
on Twitter!**

@ConvertingColor