

Converting Colors

RGB(189, 143, 142)

Have a look what the booklet for
RGB(189, 143, 142) contains.

RGB(189, 143, 142)	3
<i>Conversions</i>	4
<i>Details</i>	6
<i>Harmonies</i>	11
<i>Previews</i>	23
<i>Color Blindness Simulation</i>	26
<i>CSS Examples</i>	29

Color

RGB(189, 143, 142)

Conversions

Conversions Part 1

Format	Color
Hex	BD8F8E
RGB	189, 143, 142
RGB Percent	74%, 56%, 56%
CMY	0.2588, 0.4392, 0.4431
CMYK	0.00, 0.24, 0.25, 0.26
HSL	1°, 26%, 65%
HSV	1°, 25%, 74%
XYZ	35.6912, 32.4167, 29.9671
YIQ	156.6400, 27.7370, 9.4410

Conversions

Conversions Part 2

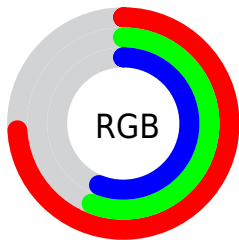
Format	Color
R _Y B	189, 143, 142
Decimal	12423054
CIE Lab	63.69, 17.25, 7.30
CIE LCh	64, 18.732, 22.920
Yxy	32.4167, 0.3639, 0.3305
Android (android.graphics.Color)	4290613134 (0xFFBD8F8E)
YUV	156.6400, -7.2175, 28.3797
Hunter-Lab	56.9357, 12.2586, 8.6487

Details

The RGB color **189, 143, 142** is a light color, and the websafe version is hex **CC9999**. A complement of this color would be **142, 188, 189**, and the grayscale version is **157, 157, 157**.

A 20% lighter version of the original color is **246, 197, 196**, and **135, 92, 92** is the 20% darker color. If you saturate the color by 10%, you get **189, 125, 123**, and if you desaturate by 10%, it is **189, 161, 161**.

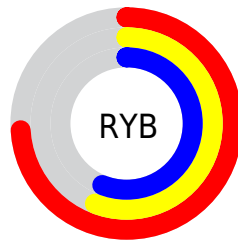
Distribution



Red (74%)

Green (56%)

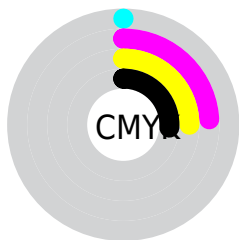
Blue (56%)



Red (74%)

Yellow (56%)

Blue (56%)

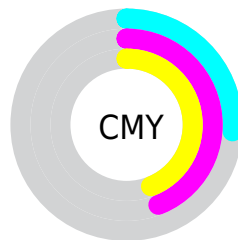


Cyan (0%)

Magenta (24%)

Yellow (25%)

Black (26%)



Cyan (26%)

Magenta (44%)

Yellow (44%)


Brightness & Saturation Gradients

These gradients show how the RGB color 189, 143, 142 changes by changing the brightness by 10 percent. The first figure shows a shift by +10% for each color and the second figure -10%.

Similar to the brightness gradients but the following saturation gradients show a change of the RGB color 189, 143, 142 by changing the saturation by 10% instead.

 189, 143, 142


255, 255, 255

 246, 197, 196

 255, 225, 224


 255, 254, 252

 189, 143, 142

 161, 117, 116

 135, 92, 92

 109, 69, 68

 83, 46, 46


 59, 24, 26

 39, 0, 0

 0, 0, 0

 189, 143, 142

 189, 125, 123

 189, 143, 142

 189, 161, 161

 189, 106, 104

 189, 180, 180

 189, 88, 85

 189, 198, 199

 189, 69, 66

 189, 217, 218

 189, 51, 47

 189, 235, 236

 189, 32, 29

 189, 254, 255

 189, 14, 10

 189, 255, 255

 189, 4, 0

Harmonies

Analogous

The Analogous color harmony consists of three colors that are next to each other on the color wheel.



185, 143, 159



189, 143, 142



184, 146, 128

Triad

The Triadic color harmony groups three colors that are evenly spaced from another and form a triangle on the color wheel.



189, 143, 142



134, 161, 134



130, 157, 187

Complementary

The Complementary color scheme is a pair of colors which are on the opposite of each other on the color wheel.



189, 143, 142



142, 188, 189

Split Complementary

Split-complementary colors differ from the complementary color scheme. The scheme consists of three colors, the original color and two neighbors of the complement color.



113, 161, 180



189, 143, 142



117, 164, 150

Square

The Square scheme is like the rectangle color scheme, but the four colors are evenly spaced on the color wheel.



189, 143, 142



153, 157, 123



109, 164, 167



152, 151, 185

Rectangle

The Rectangle color scheme consists of four colors that form a rectangle on the color wheel.



189, 143, 142



176, 150, 123



109, 164, 167



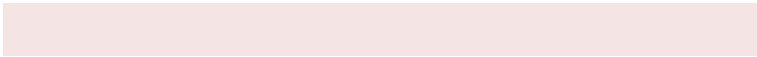
123, 159, 186

Sweetspot

The Sweet Spot groups the original color and five complimentary colors.



189, 143, 142



245, 228, 228



189, 142, 188



122, 113, 113



250, 250, 250



122, 122, 122

Same Dimension

The Same Dimension uses a secret algorithm to generate beautiful new colors.



189, 143, 142



245, 173, 171



189, 166, 142



94, 85, 85



158, 3, 0



31, 1, 0

Inverse Universe

The Inverse Universe completely reimagines the original color for something new.



142, 188, 189



171, 243, 245



142, 165, 189



85, 94, 94



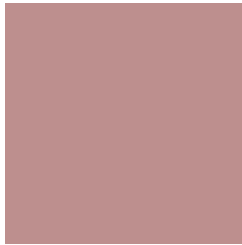
0, 155, 158



0, 30, 31

Previews

White Background



This preview shows how the RGB color 189, 143, 142 looks on a white background.

Color Contrast Check

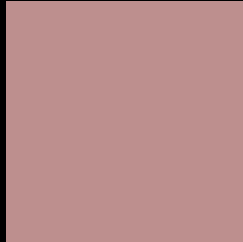
Large Text (above 18pt) WCAG AA × Fail

Any Text WCAG AA × Fail

Large Text (above 18pt) WCAG AAA × Fail

Any Text WCAG AAA × Fail

Black Background



This preview shows how the RGB color 189, 143, 142 looks on a black background.

Color Contrast Check

Large Text (above 18pt) WCAG AA ✓ Pass

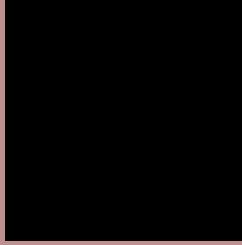
Any Text WCAG AA ✓ Pass

Large Text (above 18pt) WCAG AAA ✓ Pass

Any Text WCAG AAA ✓ Pass

If you want to check with other color combinations, try the [Color Contrast Checker](#).

RGB 189, 143, 142 Background



This preview shows how black text looks on a background with the RGB color 189, 143, 142.



This preview shows how white text looks on a background with the RGB color 189, 143, 142.

Color Blindness Simulation

Color vision deficiency is a very complex topic, and I could not describe the different causes any better than Wikipedia does, so if you want to learn more, you should check out their [article about color blindness](#).


Dichromacy



Original Color
189, 143, 142

Protanopia
159, 154, 148

Deuteranopia
174, 149, 141



Tritanopia
190, 141, 152

Trichromacy



Original Color

189, 143, 142

Protanomaly

170, 150, 146

Deuteranomaly

179, 147, 141

Tritanomaly

190, 142, 148

Monochromacy



Original Color

189, 143, 142

Achromatopsia

157, 157, 157

Achromatomaly

169, 152, 152

CSS Examples

Text

The CSS property to change the color of the text to RGB 189, 143, 142 is called "color". The color property can be set on classes, ids or directly on the HTML element.

This example shows how text in the color `rgb(189, 143, 142)` looks like.

```
.text, #text, p{  
    color:rgb(189, 143, 142)  
}
```

If you want to add a text shadow in that color use the text-shadow property, you can generate a text shadow directly with our [CSS Text Shadow Generator](#).

Here you see how black text with a 4 pixel rgb(189, 143, 142) colored shadow looks like.

```
.shadow{ text-shadow: 4px 4px 2px rgb(189, 143, 142) }
```

Border

The CSS property to change the border of an element to RGB 189, 143, 142 is called "border". The border property can be set on classes, ids or directly on the HTML element.

This example shows the color as border, it can be applied via the CSS property "border" or "border-color".

```
.border, #border, table{ border:4px solid rgb(189, 143, 142) }
```

If only the border color should be changed use the property `border-color`.

```
.border{ border-color:rgb(189, 143, 142) }
```

If you want to add a box shadow in that color use:

Here you see how a box with a 4 pixel `rgb(189, 143, 142)` colored shadow looks like.

```
.boxshadow{ -moz-box-shadow:4px 4px 4px  
4px rgb(189, 143, 142); -webkit-box-  
shadow:4px 4px 4px 4px rgb(189, 143, 142);  
box-shadow:4px 4px 4px 4px rgb(189, 143,  
142) }
```

Background

The CSS property to change the background color of an element to RGB 189, 143, 142 is called "background". The background property can be set on classes, ids or directly on the HTML element.

```
.background, #background, body{  
background: rgb(189, 143, 142) }
```

If only the background color should be changed can be used:

```
.background{ background-color: rgb(189,  
143, 142) }
```

This example shows the color as background, it is applied via the CSS property "background".

To optimize and compress your CSS code, you can use our [online CSS compressor and optimizer](#) based on csstidy. If you want to create a linear or radial gradient as background or border, check our [CSS Gradient Generator](#).

Hey! You found this booklet interesting? Support Converting Colors with the new Membership Option!

The pro membership hides all ads, plus gives you double the colors in the color bucket, and more awesome pro features!

[Learn more, Memberships starting at \\$2.50/m!](#)

**Follow me
on Twitter!**

@ConvertingColor