

Converting Colors

RGB(189, 152, 155)

Have a look what the booklet for
RGB(189, 152, 155) contains.

RGB(189, 152, 155)	3
<i>Conversions</i>	4
<i>Details</i>	6
<i>Harmonies</i>	11
<i>Previews</i>	23
<i>Color Blindness Simulation</i>	26
<i>CSS Examples</i>	29

Color

RGB(189, 152, 155)

Conversions

Conversions Part 1

Format	Color
Hex	BD989B
RGB	189, 152, 155
RGB Percent	74%, 60%, 61%
CMY	0.2588, 0.4039, 0.3922
CMYK	0.00, 0.20, 0.18, 0.26
HSL	355°, 22%, 67%
HSV	355°, 20%, 74%
XYZ	38.1309, 35.6418, 35.8802
YIQ	163.4050, 21.0890, 8.7770

Conversions

Conversions Part 2

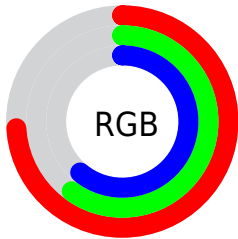
Format	Color
RYB	189, 152, 155
Decimal	12425371
CIELab	66.25, 14.26, 3.66
CIElCh	66, 14.721, 14.394
Yxy	35.6418, 0.3477, 0.3250
Android (android.graphics.Color)	4290615451 (0xFFBD989B)
YUV	163.4050, -4.1437, 22.4468
Hunter-Lab	59.7008, 9.5316, 6.1572

Details

The RGB color **189, 152, 155** is a light color, and the websafe version is hex **CC9999**. A complement of this color would be **152, 189, 186**, and the grayscale version is **163, 163, 163**.

A 20% lighter version of the original color is **246, 206, 209**, and **135, 101, 104** is the 20% darker color. If you saturate the color by 10%, you get **189, 133, 138**, and if you desaturate by 10%, it is **189, 171, 172**.

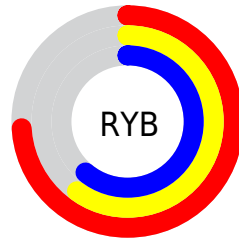
Distribution



Red (74%)

Green (60%)

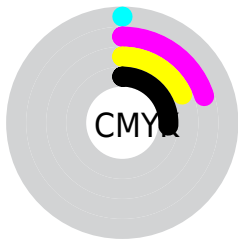
Blue (61%)



Red (74%)

Yellow (60%)

Blue (61%)

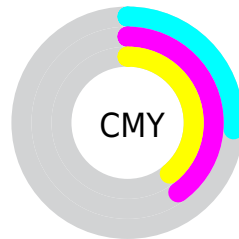


Cyan (0%)

Magenta (20%)

Yellow (18%)

Black (26%)



Cyan (26%)

Magenta (40%)

Yellow (39%)

Brightness & Saturation Gradients

These gradients show how the RGB color 189, 152, 155 changes by changing the brightness by 10 percent. The first figure shows a shift by +10% for each color and the second figure -10%.

Similar to the brightness gradients but the following saturation gradients show a change of the RGB color 189, 152, 155 by changing the saturation by 10% instead.

 189, 152, 155

255, 255, 255

 246, 206, 209

 255, 235, 238


 189, 152, 155

 162, 126, 129

 135, 101, 104

 109, 77, 80

 85, 54, 57

 61, 32, 36

 38, 11, 14

 0, 0, 0

 189, 152, 155

 189, 133, 138

 189, 152, 155

 189, 171, 172

■ 189, 114, 120

■ 189, 190, 190

■ 189, 95, 103

■ 189, 209, 207

■ 189, 76, 86

■ 189, 228, 224

■ 189, 57, 68

■ 189, 247, 242

■ 189, 39, 51

■ 189, 255, 255

■ 189, 20, 33

■ 189, 1, 16

■ 189, 0, 15

Harmonies

Analogous

The Analogous color harmony consists of three colors that are next to each other on the color wheel.



184, 153, 168



189, 152, 155



187, 154, 143

Triad

The Triadic color harmony groups three colors that are evenly spaced from another and form a triangle on the color wheel.



189, 152, 155



150, 166, 142



138, 164, 186

Complementary

The Complementary color scheme is a pair of colors which are on the opposite of each other on the color wheel.



189, 152, 155



152, 189, 186

Split Complementary

Split-complementary colors differ from the complementary color scheme. The scheme consists of three colors, the original color and two neighbors of the complement color.



128, 167, 179



189, 152, 155



136, 168, 153

Square

The Square scheme is like the rectangle color scheme, but the four colors are evenly spaced on the color wheel.



189, 152, 155



165, 162, 135



127, 169, 167



155, 160, 186

Rectangle

The Rectangle color scheme consists of four colors that form a rectangle on the color wheel.



189, 152, 155



182, 156, 138



127, 169, 167



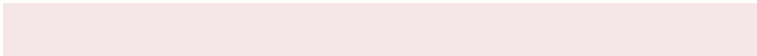
134, 165, 184

Sweetspot

The Sweet Spot groups the original color and five complimentary colors.



189, 152, 155



245, 230, 231



186, 152, 189



122, 114, 115



250, 250, 250



122, 122, 122

Same Dimension

The Same Dimension uses a secret algorithm to generate beautiful new colors.



189, 152, 155



245, 188, 193



189, 167, 152



94, 85, 86



158, 0, 13



31, 0, 2

Inverse Universe

The Inverse Universe completely reimagines the original color for something new.



189, 152, 155



245, 188, 193



152, 174, 189



94, 85, 86



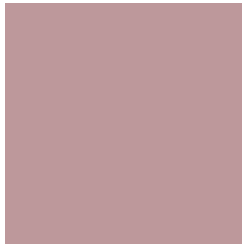
158, 0, 13



31, 0, 2

Previews

White Background



This preview shows how the RGB color 189, 152, 155 looks on a white background.

Color Contrast Check

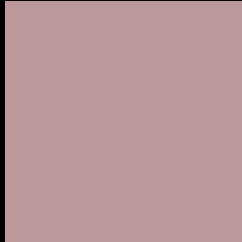
Large Text (above 18pt) WCAG AA × Fail

Any Text WCAG AA × Fail

Large Text (above 18pt) WCAG AAA × Fail

Any Text WCAG AAA × Fail

Black Background



This preview shows how the RGB color 189, 152, 155 looks on a black background.

Color Contrast Check

Large Text (above 18pt) WCAG AA ✓ Pass

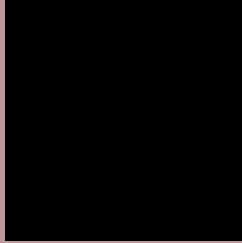
Any Text WCAG AA ✓ Pass

Large Text (above 18pt) WCAG AAA ✓ Pass

Any Text WCAG AAA ✓ Pass

If you want to check with other color combinations, try the [Color Contrast Checker](#).

RGB 189, 152, 155 Background



This preview shows how black text looks on a background with the RGB color 189, 152, 155.



This preview shows how white text looks on a background with the RGB color 189, 152, 155.

Color Blindness Simulation

Color vision deficiency is a very complex topic, and I could not describe the different causes any better than Wikipedia does, so if you want to learn more, you should check out their [article about color blindness](#).


Dichromacy



Original Color
189, 152, 155

Protanopia
164, 160, 160

Deuteranopia
179, 156, 154



Tritanopia
190, 151, 163

Trichromacy



Original Color

189, 152, 155

Protanomaly

173, 157, 158

Deuteranomaly

183, 155, 154

Tritanomaly

190, 151, 160

Monochromacy



Original Color

189, 152, 155

Achromatopsia

163, 163, 163

Achromatomaly

172, 159, 160

CSS Examples

Text

The CSS property to change the color of the text to RGB 189, 152, 155 is called "color". The color property can be set on classes, ids or directly on the HTML element.

This example shows how text in the color rgb(189, 152, 155) looks like.

```
.text, #text, p{  
    color:rgb(189, 152, 155)  
}
```

If you want to add a text shadow in that color use the text-shadow property, you can generate a text shadow directly with our [CSS Text Shadow Generator](#).

Here you see how black text with a 4 pixel rgb(189, 152, 155) colored shadow looks like.

```
.shadow{ text-shadow: 4px 4px 2px rgb(189, 152, 155) }
```

Border

The CSS property to change the border of an element to RGB 189, 152, 155 is called "border". The border property can be set on classes, ids or directly on the HTML element.

This example shows the color as border, it can be applied via the CSS property "border" or "border-color".

```
.border, #border, table{ border:4px solid rgb(189, 152, 155) }
```

If only the border color should be changed use the property `border-color`.

```
.border{ border-color:rgb(189, 152, 155) }
```

If you want to add a box shadow in that color use:

Here you see how a box with a 4 pixel `rgb(189, 152, 155)` colored shadow looks like.

```
.boxshadow{ -moz-box-shadow:4px 4px 4px  
4px rgb(189, 152, 155); -webkit-box-  
shadow:4px 4px 4px 4px rgb(189, 152, 155);  
box-shadow:4px 4px 4px 4px rgb(189, 152,  
155) }
```

Background

The CSS property to change the background color of an element to RGB 189, 152, 155 is called "background". The background property can be set on classes, ids or directly on the HTML element.

```
.background, #background, body{  
background: rgb(189, 152, 155) }
```

If only the background color should be changed can be used:

```
.background{ background-color: rgb(189,  
152, 155) }
```

This example shows the color as background, it is applied via the CSS property "background".

To optimize and compress your CSS code, you can use our [online CSS compressor and optimizer](#) based on csstidy. If you want to create a linear or radial gradient as background or border, check our [CSS Gradient Generator](#).

Hey! You found this booklet interesting? Support Converting Colors with the new Membership Option!

The pro membership hides all ads, plus gives you double the colors in the color bucket, and more awesome pro features!

[Learn more, Memberships starting at \\$2.50/m!](#)

**Follow me
on Twitter!**

@ConvertingColor