

Converting Colors

RGB(189, 170, 165)

Have a look what the booklet for
RGB(189, 170, 165) contains.

RGB(189, 170, 165)	3
<i>Conversions</i>	4
<i>Details</i>	6
<i>Harmonies</i>	11
<i>Previews</i>	23
<i>Color Blindness Simulation</i>	26
<i>CSS Examples</i>	29

Color

RGB(189, 170, 165)

Conversions

Conversions Part 1

Format	Color
Hex	BDAAA5
RGB	189, 170, 165
RGB Percent	74%, 67%, 65%
CMY	0.2588, 0.3333, 0.3529
CMYK	0.00, 0.10, 0.13, 0.26
HSL	12°, 15%, 69%
HSV	12°, 13%, 74%
XYZ	42.1525, 42.2849, 41.5374
YIQ	175.1110, 12.9290, 2.4730

Conversions

Conversions Part 2

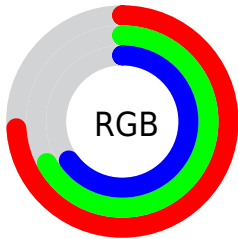
Format	Color
RYB	189, 171, 165
Decimal	12429989
CIELab	71.07, 6.01, 5.06
CIELCh	71, 7.859, 40.114
Yxy	42.2849, 0.3346, 0.3357
Android (android.graphics.Color)	4290620069 (0xFFBDAAA5)
YUV	175.1110, -4.9847, 12.1807
Hunter-Lab	65.0268, 1.9126, 7.6459

Details

The RGB color **189, 170, 165** is a light color, and the websafe version is hex **999999**. A complement of this color would be **165, 184, 189**, and the grayscale version is **175, 175, 175**.

A 20% lighter version of the original color is **245, 225, 220**, and **136, 118, 113** is the 20% darker color. If you saturate the color by 10%, you get **189, 155, 146**, and if you desaturate by 10%, it is **189, 185, 184**.

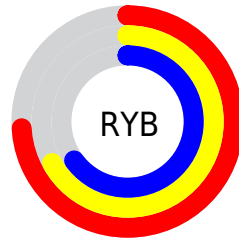
Distribution



Red (74%)

Green (67%)

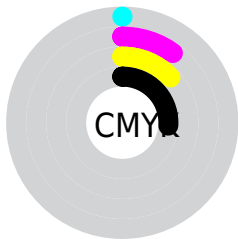
Blue (65%)



Red (74%)

Yellow (67%)

Blue (65%)

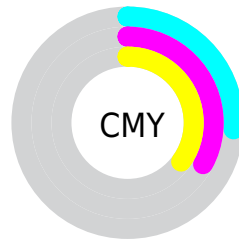


Cyan (0%)

Magenta (10%)

Yellow (13%)

Black (26%)



Cyan (26%)

Magenta (33%)

Yellow (35%)

Brightness & Saturation Gradients

These gradients show how the RGB color 189, 170, 165 changes by changing the brightness by 10 percent. The first figure shows a shift by +10% for each color and the second figure -10%.

Similar to the brightness gradients but the following saturation gradients show a change of the RGB color 189, 170, 165 by changing the saturation by 10% instead.

 189, 170, 165


255, 255, 255

 245, 225, 220

 255, 254, 248

 189, 170, 165

 162, 144, 139

 136, 118, 113

 110, 93, 89

 86, 70, 65

 62, 47, 43

 40, 26, 23

 19, 0, 0

 0, 0, 0

 189, 170, 165


 189, 170, 165

 189, 155, 146


 189, 185, 184

 189, 140, 127

 189, 200, 203

 189, 125, 108

 189, 215, 222

 189, 110, 89

 189, 230, 241

 189, 95, 71

 189, 245, 255

 189, 80, 52

 189, 255, 255

 189, 65, 33

 189, 50, 14

 189, 39, 0

Harmonies

Analogous

The Analogous color harmony consists of three colors that are next to each other on the color wheel.



189, 169, 172



189, 170, 165



185, 172, 161

Triad

The Triadic color harmony groups three colors that are evenly spaced from another and form a triangle on the color wheel.



189, 170, 165



162, 178, 169



170, 174, 188

Complementary

The Complementary color scheme is a pair of colors which are on the opposite of each other on the color wheel.



189, 170, 165



165, 184, 189

Split Complementary

Split-complementary colors differ from the complementary color scheme. The scheme consists of three colors, the original color and two neighbors of the complement color.



162, 176, 187



189, 170, 165



157, 178, 176

Square

The Square scheme is like the rectangle color scheme, but the four colors are evenly spaced on the color wheel.



189, 170, 165



169, 176, 163



157, 178, 183



178, 171, 185

Rectangle

The Rectangle color scheme consists of four colors that form a rectangle on the color wheel.



189, 170, 165



180, 173, 160



157, 178, 183



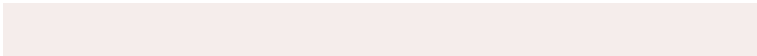
167, 175, 188

Sweetspot

The Sweet Spot groups the original color and five complimentary colors.



189, 170, 165



245, 237, 235



189, 165, 184



122, 118, 116



250, 250, 250



122, 122, 122

Same Dimension

The Same Dimension uses a secret algorithm to generate beautiful new colors.



189, 170, 165



245, 216, 208



189, 182, 165



94, 87, 85



158, 33, 0



31, 6, 0

Inverse Universe

The Inverse Universe completely reimagines the original color for something new.



165, 184, 189



208, 237, 245



165, 172, 189



85, 92, 94



0, 125, 158



0, 24, 31

Previews

White Background



This preview shows how the RGB color 189, 170, 165 looks on a white background.

Color Contrast Check

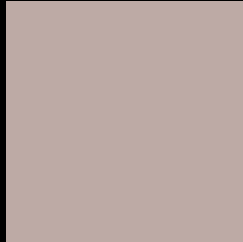
Large Text (above 18pt) WCAG AA × Fail

Any Text WCAG AA × Fail

Large Text (above 18pt) WCAG AAA × Fail

Any Text WCAG AAA × Fail

Black Background



This preview shows how the RGB color 189, 170, 165 looks on a black background.

Color Contrast Check

Large Text (above 18pt) WCAG AA ✓ Pass

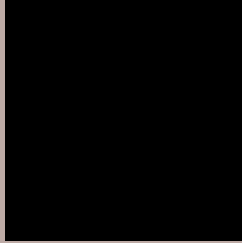
Any Text WCAG AA ✓ Pass

Large Text (above 18pt) WCAG AAA ✓ Pass

Any Text WCAG AAA ✓ Pass

If you want to check with other color combinations, try the [Color Contrast Checker](#).

RGB 189, 170, 165 Background



This preview shows how black text looks on a background with the RGB color 189, 170, 165.



This preview shows how white text looks on a background with the RGB color 189, 170, 165.

Color Blindness Simulation

Color vision deficiency is a very complex topic, and I could not describe the different causes any better than Wikipedia does, so if you want to learn more, you should check out their [article about color blindness](#).

Dichromacy



Original Color
189, 170, 165

Protanopia
179, 173, 167

Deuteranopia
194, 168, 165



Tritanopia
191, 168, 181

Trichromacy



Original Color

189, 170, 165

Protanomaly

183, 172, 166

Deuteranomaly

192, 169, 165

Tritanomaly

190, 169, 175

Monochromacy



Original Color

189, 170, 165

Achromatopsia

175, 175, 175

Achromatomaly

180, 173, 171

CSS Examples

Text

The CSS property to change the color of the text to RGB 189, 170, 165 is called "color". The color property can be set on classes, ids or directly on the HTML element.

This example shows how text in the color rgb(189, 170, 165) looks like.

```
.text, #text, p{  
    color:rgb(189, 170, 165)  
}
```

If you want to add a text shadow in that color use the text-shadow property, you can generate a text shadow directly with our [CSS Text Shadow Generator](#).

Here you see how black text with a 4 pixel rgb(189, 170, 165) colored shadow looks like.

```
.shadow{ text-shadow: 4px 4px 2px rgb(189, 170, 165) }
```

Border

The CSS property to change the border of an element to RGB 189, 170, 165 is called "border". The border property can be set on classes, ids or directly on the HTML element.

This example shows the color as border, it can be applied via the CSS property "border" or "border-color".

```
.border, #border, table{ border:4px solid rgb(189, 170, 165) }
```

If only the border color should be changed use the property `border-color`.

```
.border{ border-color:rgb(189, 170, 165) }
```

If you want to add a box shadow in that color use:

Here you see how a box with a 4 pixel `rgb(189, 170, 165)` colored shadow looks like.

```
.boxshadow{ -moz-box-shadow:4px 4px 4px  
4px rgb(189, 170, 165); -webkit-box-  
shadow:4px 4px 4px 4px rgb(189, 170, 165);  
box-shadow:4px 4px 4px 4px rgb(189, 170,  
165) }
```

Background

The CSS property to change the background color of an element to RGB 189, 170, 165 is called "background". The background property can be set on classes, ids or directly on the HTML element.

```
.background, #background, body{  
background: rgb(189, 170, 165) }
```

If only the background color should be changed can be used:

```
.background{ background-color: rgb(189,  
170, 165) }
```

This example shows the color as background, it is applied via the CSS property "background".

To optimize and compress your CSS code, you can use our [online CSS compressor and optimizer](#) based on csstidy. If you want to create a linear or radial gradient as background or border, check our [CSS Gradient Generator](#).

Hey! You found this booklet interesting? Support Converting Colors with the new Membership Option!

The pro membership hides all ads, plus gives you double the colors in the color bucket, and more awesome pro features!

[Learn more, Memberships starting at \\$2.50/m!](#)

**Follow me
on Twitter!**

@ConvertingColor