

Converting Colors

RGB(190, 127, 81)

Have a look what the booklet for
RGB(190, 127, 81) contains.

RGB(190, 127, 81)	3
<i>Conversions</i>	4
<i>Details</i>	6
<i>Harmonies</i>	11
<i>Previews</i>	23
<i>Color Blindness Simulation</i>	26
<i>CSS Examples</i>	29

Color

RGB(190, 127, 81)

Conversions

Conversions Part 1

Format	Color
Hex	BE7F51
RGB	190, 127, 81
RGB Percent	75%, 50%, 32%
CMY	0.2549, 0.5020, 0.6824
CMYK	0.00, 0.33, 0.57, 0.25
HSL	25°, 46%, 53%
HSV	25°, 57%, 75%
XYZ	30.3098, 26.7200, 11.3446
YIQ	140.5930, 52.3140, -0.9500

Conversions

Conversions Part 2

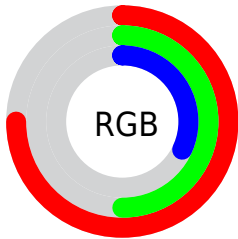
Format	Color
R_{YB}	190, 161, 81
Decimal	12484433
CIE _{Lab}	58.71, 19.56, 34.71
CIE _{LCh}	59, 39.837, 60.600
Yxy	26.7200, 0.4433, 0.3908
Android (android.graphics.Color)	4290674513 (0xFFBE7F51)
YUV	140.5930, -29.3793, 43.3299
Hunter-Lab	51.6914, 14.2055, 23.1718

Details

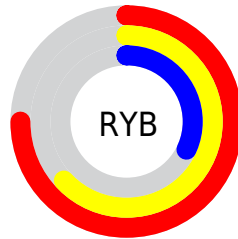
The RGB color **190, 127, 81** is a dark color, and the websafe version is hex **CC9966**, and the color name is **ochre (Ōdo-iro)**. A complement of this color would be **81, 144, 190**, and the grayscale version is **141, 141, 141**.

A 20% lighter version of the original color is **249, 180, 131**, and **133, 78, 34** is the 20% darker color. If you saturate the color by 10%, you get **190, 116, 62**, and if you desaturate by 10%, it is **190, 138, 100**.

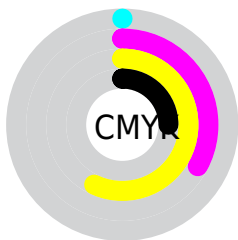
Distribution



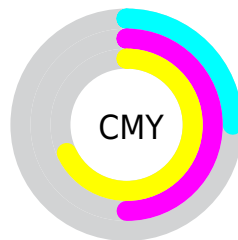
- Red (75%)
- Green (50%)
- Blue (32%)



- Red (75%)
- Yellow (63%)
- Blue (32%)



- Cyan (0%)
- Magenta (33%)
- Yellow (57%)
- Black (25%)




- Cyan (25%)
- Magenta (50%)
- Yellow (68%)

Brightness & Saturation Gradients

These gradients show how the RGB color 190, 127, 81 changes by changing the brightness by 10 percent. The first figure shows a shift by +10% for each color and the second figure -10%.


Similar to the brightness gradients but the following saturation gradients show a change of the RGB color 190, 127, 81 by changing the saturation by 10% instead.

 190, 127, 81  190, 127, 81

255, 255, 255  161, 102, 57

 249, 180, 131  133, 78, 34

 255, 208, 158  105, 54, 11

 255, 236, 185  79, 32, 0

 255, 255, 213  52, 11, 0

 255, 255, 241  27, 0, 1

 0, 0, 0

 190, 127, 81  190, 127, 81

 190, 116, 62  190, 138, 100

■ 190, 105, 43

■ 190, 149, 119

■ 190, 94, 24

■ 190, 160, 138

■ 190, 83, 5

■ 190, 171, 157

■ 190, 80, 0

■ 190, 182, 176

■ 190, 193, 195

■ 190, 204, 214

■ 190, 215, 233

■ 190, 226, 252

Harmonies

Analogous

The Analogous color harmony consists of three colors that are next to each other on the color wheel.



206, 116, 108



190, 127, 81



162, 139, 70

Triad

The Triadic color harmony groups three colors that are evenly spaced from another and form a triangle on the color wheel.



190, 127, 81



0, 159, 141



145, 132, 201

Complementary

The Complementary color scheme is a pair of colors which are on the opposite of each other on the color wheel.



190, 127, 81



81, 144, 190

Split Complementary

Split-complementary colors differ from the complementary color scheme. The scheme consists of three colors, the original color and two neighbors of the complement color.



85, 145, 211



190, 127, 81



0, 159, 176

Square

The Square scheme is like the rectangle color scheme, but the four colors are evenly spaced on the color wheel.



190, 127, 81



82, 156, 106



0, 154, 201



185, 119, 176

Rectangle

The Rectangle color scheme consists of four colors that form a rectangle on the color wheel.



190, 127, 81



139, 147, 74



0, 154, 201



127, 136, 207

Sweetspot

The Sweet Spot groups the original color and five complimentary colors.



190, 127, 81



247, 223, 205



190, 81, 145



125, 111, 100



252, 252, 252



125, 125, 125

Same Dimension

The Same Dimension uses a secret algorithm to generate beautiful new colors.



190, 127, 81



247, 149, 77



190, 181, 81



94, 89, 85



158, 67, 0



31, 13, 0

Inverse Universe

The Inverse Universe completely reimagines the original color for something new.



81, 144, 190



77, 175, 247



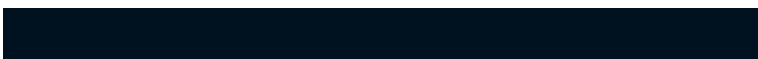
81, 90, 190



85, 90, 94



0, 91, 158



0, 18, 31

Previews

White Background



This preview shows how the RGB color 190, 127, 81 looks on a white background.

Color Contrast Check

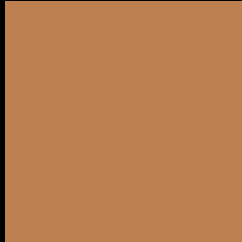
Large Text (above 18pt) WCAG AA ✓ Pass

Any Text WCAG AA ✗ Fail

Large Text (above 18pt) WCAG AAA ✗ Fail

Any Text WCAG AAA ✗ Fail

Black Background



This preview shows how the RGB color 190, 127, 81 looks on a black background.

Color Contrast Check

Large Text (above 18pt) WCAG AA ✓ Pass

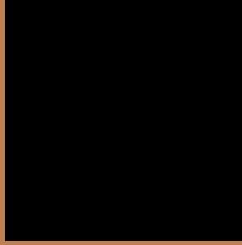
Any Text WCAG AA ✓ Pass

Large Text (above 18pt) WCAG AAA ✓ Pass

Any Text WCAG AAA × Fail

If you want to check with other color combinations, try the [Color Contrast Checker](#).

RGB 190, 127, 81 Background



This preview shows how black text looks on a background with the RGB color 190, 127, 81.



This preview shows how white text looks on a background with the RGB color 190, 127, 81.

Color Blindness Simulation

Color vision deficiency is a very complex topic, and I could not describe the different causes any better than Wikipedia does, so if you want to learn more, you should check out their [article about color blindness](#).

Dichromacy



Original Color
190, 127, 81

Protanopia
155, 142, 86

Deuteranopia
173, 135, 79



Tritanopia
194, 121, 130

Trichromacy



Original Color

190, 127, 81

Protanomaly

168, 137, 84

Deuteranomaly

179, 132, 80

Tritanomaly

193, 123, 112

Monochromacy



Original Color

190, 127, 81

Achromatopsia

141, 141, 141

Achromatomaly

159, 136, 119

CSS Examples

Text

The CSS property to change the color of the text to RGB 190, 127, 81 is called "color". The color property can be set on classes, ids or directly on the HTML element.

This example shows how text in the color `rgb(190, 127, 81)` looks like.

```
.text, #text, p{  
    color:rgb(190, 127, 81)  
}
```

If you want to add a text shadow in that color use the text-shadow property, you can generate a text shadow directly with our [CSS Text Shadow Generator](#).

Here you see how black text with a 4 pixel rgb(190, 127, 81) colored shadow looks like.

```
.shadow{ text-shadow: 4px 4px 2px rgb(190, 127, 81) }
```

Border

The CSS property to change the border of an element to RGB 190, 127, 81 is called "border". The border property can be set on classes, ids or directly on the HTML element.

This example shows the color as border, it can be applied via the CSS property "border" or "border-color".

```
.border, #border, table{ border:4px solid rgb(190, 127, 81) }
```

If only the border color should be changed use the property `border-color`.

```
.border{ border-color:rgb(190, 127, 81) }
```

If you want to add a box shadow in that color use:

Here you see how a box with a 4 pixel `rgb(190, 127, 81)` colored shadow looks like.

```
.boxshadow{ -moz-box-shadow:4px 4px 4px  
4px rgb(190, 127, 81); -webkit-box-  
shadow:4px 4px 4px 4px rgb(190, 127, 81);  
box-shadow:4px 4px 4px 4px rgb(190, 127,  
81) }
```

Background

The CSS property to change the background color of an element to RGB 190, 127, 81 is called "background". The background property can be set on classes, ids or directly on the HTML element.

```
.background, #background, body{  
background: rgb(190, 127, 81) }
```

If only the background color should be changed can be used:

```
.background{ background-color: rgb(190,  
127, 81) }
```

This example shows the color as background, it is applied via the CSS property "background".

To optimize and compress your CSS code, you can use our [online CSS compressor and optimizer](#) based on csstidy. If you want to create a linear or radial gradient as background or border, check our [CSS Gradient Generator](#).

Hey! You found this booklet interesting? Support Converting Colors with the new Membership Option!

The pro membership hides all ads, plus gives you double the colors in the color bucket, and more awesome pro features!

[Learn more, Memberships starting at \\$2.50/m!](#)

**Follow me
on Twitter!**

@ConvertingColor