

Converting Colors

RGB(190, 134, 134)

Have a look what the booklet for
RGB(190, 134, 134) contains.

RGB(190, 134, 134)	3
<i>Conversions</i>	4
<i>Details</i>	6
<i>Harmonies</i>	11
<i>Previews</i>	23
<i>Color Blindness Simulation</i>	26
<i>CSS Examples</i>	29

Color

RGB(190, 134, 134)

Conversions

Conversions Part 1	
Format	Color
Hex	BE8686
RGB	190, 134, 134
RGB Percent	75%, 53%, 53%
CMY	0.2549, 0.4745, 0.4745
CMYK	0.00, 0.29, 0.29, 0.25
HSL	0°, 30%, 64%
HSV	0°, 29%, 75%
XYZ	34.0634, 29.7186, 26.4952
YIQ	150.7440, 33.3760, 11.8720

Conversions

Conversions Part 2

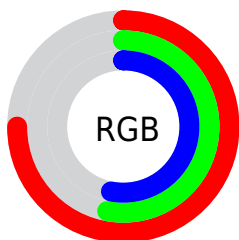
Format	Color
RYB	190, 134, 134
Decimal	12486278
CIELab	61.41, 21.49, 8.60
CIELCh	61, 23.148, 21.820
Yxy	29.7186, 0.3773, 0.3292
Android (android.graphics.Color)	4290676358 (0xFFBE8686)
YUV	150.7440, -8.2548, 34.4275
Hunter-Lab	54.5147, 16.1344, 9.3443

Details

The RGB color **190, 134, 134** is a light color, and the websafe version is hex **CC9999**. A complement of this color would be **134, 190, 190**, and the grayscale version is **151, 151, 151**.

A 20% lighter version of the original color is **247, 188, 187**, and **135, 84, 84** is the 20% darker color. If you saturate the color by 10%, you get **190, 115, 115**, and if you desaturate by 10%, it is **190, 153, 153**.

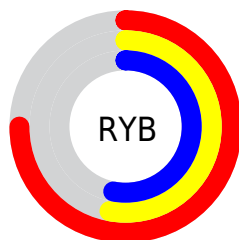
Distribution



Red (75%)

Green (53%)

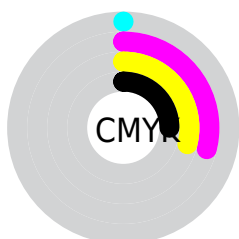
Blue (53%)



Red (75%)

Yellow (53%)

Blue (53%)

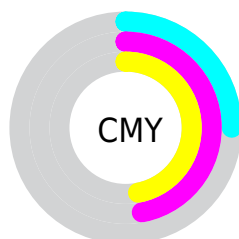


Cyan (0%)

Magenta (29%)

Yellow (29%)

Black (25%)



Cyan (25%)

Magenta (47%)

Yellow (47%)

Brightness & Saturation Gradients

These gradients show how the RGB color 190, 134, 134 changes by changing the brightness by 10 percent. The first figure shows a shift by +10% for each color and the second figure -10%.

Similar to the brightness gradients but the following saturation gradients show a change of the RGB color 190, 134, 134 by changing the saturation by 10% instead.

 190, 134, 134


255, 255, 255

 247, 188, 187

 255, 215, 215

 255, 244, 243


 190, 134, 134

 162, 108, 109

 135, 84, 84

 109, 60, 61

 83, 38, 40

 58, 16, 19


 38, 0, 0

 0, 0, 0


 190, 134, 134

 190, 115, 115


 190, 134, 134

 190, 153, 153

 190, 96, 96

 190, 172, 172

 190, 77, 77

 190, 191, 191

 190, 58, 58

 190, 210, 210

 190, 39, 39

 190, 229, 229

 190, 20, 20

 190, 248, 248

 190, 1, 1

 190, 255, 255

 190, 0, 0

Harmonies

Analogous

The Analogous color harmony consists of three colors that are next to each other on the color wheel.



185, 134, 155



190, 134, 134



184, 138, 117

Triad

The Triadic color harmony groups three colors that are evenly spaced from another and form a triangle on the color wheel.



190, 134, 134



124, 157, 122



115, 152, 188

Complementary

The Complementary color scheme is a pair of colors which are on the opposite of each other on the color wheel.



190, 134, 134



134, 190, 190

Split Complementary

Split-complementary colors differ from the complementary color scheme. The scheme consists of three colors, the original color and two neighbors of the complement color.



93, 157, 180



190, 134, 134



102, 159, 142

Square

The Square scheme is like the rectangle color scheme, but the four colors are evenly spaced on the color wheel.



190, 134, 134



148, 152, 110



88, 160, 163



144, 145, 186

Rectangle

The Rectangle color scheme consists of four colors that form a rectangle on the color wheel.



190, 134, 134



174, 143, 110



88, 160, 163



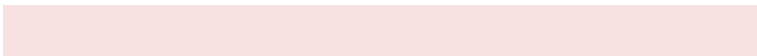
106, 154, 187

Sweetspot

The Sweet Spot groups the original color and five complimentary colors.



190, 134, 134



247, 225, 225



190, 134, 190



125, 111, 111



252, 252, 252



125, 125, 125

Same Dimension

The Same Dimension uses a secret algorithm to generate beautiful new colors.



190, 134, 134



247, 161, 161



190, 162, 134



94, 85, 85



158, 0, 0



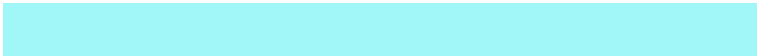
31, 0, 0

Inverse Universe

The Inverse Universe completely reimagines the original color for something new.



134, 190, 190



161, 247, 247



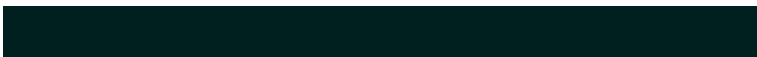
134, 162, 190



85, 94, 94



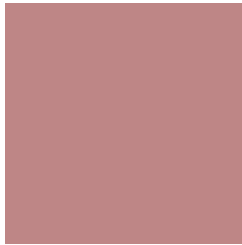
0, 158, 158



0, 31, 31

Previews

White Background



This preview shows how the RGB color 190, 134, 134 looks on a white background.

Color Contrast Check

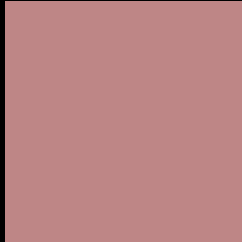
Large Text (above 18pt) WCAG AA ✓ Pass

Any Text WCAG AA ✗ Fail

Large Text (above 18pt) WCAG AAA ✗ Fail

Any Text WCAG AAA ✗ Fail

Black Background



This preview shows how the RGB color 190, 134, 134 looks on a black background.

Color Contrast Check

Large Text (above 18pt) WCAG AA ✓ Pass

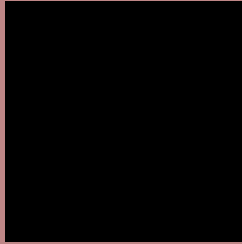
Any Text WCAG AA ✓ Pass

Large Text (above 18pt) WCAG AAA ✓ Pass

Any Text WCAG AAA × Fail

If you want to check with other color combinations, try the [Color Contrast Checker](#).

RGB 190, 134, 134 Background



This preview shows how black text looks on a background with the RGB color 190, 134, 134.



This preview shows how white text looks on a background with the RGB color 190, 134, 134.

Color Blindness Simulation

Color vision deficiency is a very complex topic, and I could not describe the different causes any better than Wikipedia does, so if you want to learn more, you should check out their [article about color blindness](#).

Dichromacy



Original Color


190, 134, 134

Protanopia

153, 148, 141

Deuteranopia

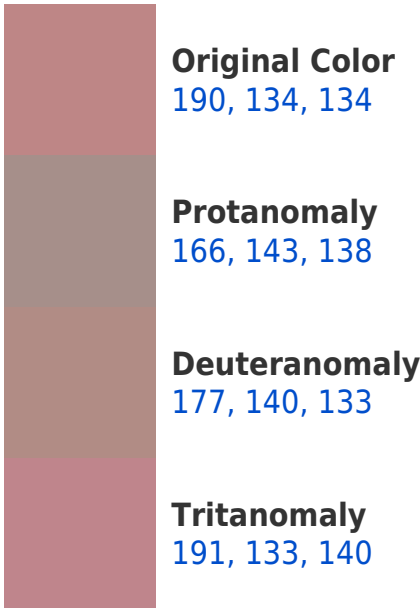
169, 143, 132



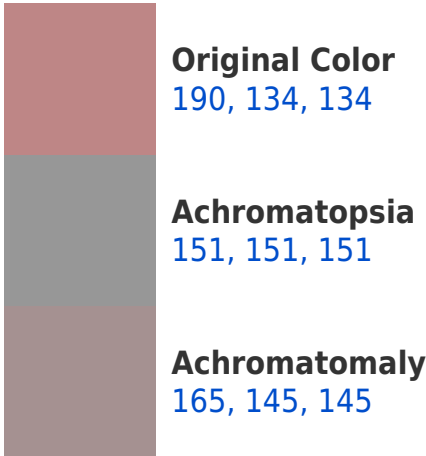
Tritanopia

191, 133, 143

Trichromacy



Monochromacy



CSS Examples

Text

The CSS property to change the color of the text to RGB 190, 134, 134 is called "color". The color property can be set on classes, ids or directly on the HTML element.

This example shows how text in the color rgb(190, 134, 134) looks like.

```
.text, #text, p{  
    color:rgb(190, 134, 134)  
}
```

If you want to add a text shadow in that color use the text-shadow property, you can generate a text shadow directly with our [CSS Text Shadow Generator](#).

Here you see how black text with a 4 pixel rgb(190, 134, 134) colored shadow looks like.

```
.shadow{ text-shadow: 4px 4px 2px rgb(190, 134, 134) }
```

Border

The CSS property to change the border of an element to RGB 190, 134, 134 is called "border". The border property can be set on classes, ids or directly on the HTML element.

This example shows the color as border, it can be applied via the CSS property "border" or "border-color".

```
.border, #border, table{ border:4px solid rgb(190, 134, 134) }
```

If only the border color should be changed use the property border-color.

```
.border{ border-color:rgb(190, 134, 134) }
```

If you want to add a box shadow in that color use:

Here you see how a box with a 4 pixel rgb(190, 134, 134) colored shadow looks like.

```
.boxshadow{ -moz-box-shadow:4px 4px 4px  
4px rgb(190, 134, 134); -webkit-box-  
shadow:4px 4px 4px 4px rgb(190, 134, 134);  
box-shadow:4px 4px 4px 4px rgb(190, 134,  
134) }
```

Background

The CSS property to change the background color of an element to RGB 190, 134, 134 is called "background". The background property can be set on classes, ids or directly on the HTML element.

```
.background, #background, body{  
background: rgb(190, 134, 134) }
```

If only the background color should be changed can be used:

```
.background{ background-color: rgb(190,  
134, 134) }
```

This example shows the color as background, it is applied via the CSS property "background".

To optimize and compress your CSS code, you can use our [online CSS compressor and optimizer](#) based on csstidy. If you want to create a linear or radial gradient as background or border, check our [CSS Gradient Generator](#).

Hey! You found this booklet
interesting? Support Converting
Colors with the new Membership
Option!

The pro membership hides all ads, plus gives you
double the colors in the color bucket, and more
awesome pro features!

[Learn more, Memberships starting at \\$2.50/m!](#)

**Follow me
on Twitter!**

@ConvertingColor