

Converting Colors

RGB(190, 136, 130)

Have a look what the booklet for
RGB(190, 136, 130) contains.

RGB(190, 136, 130)	3
<i>Conversions</i>	4
<i>Details</i>	6
<i>Harmonies</i>	11
<i>Previews</i>	23
<i>Color Blindness Simulation</i>	26
<i>CSS Examples</i>	29

Color

RGB(190, 136, 130)

Conversions

Conversions Part 1

Format	Color
Hex	BE8882
RGB	190, 136, 130
RGB Percent	75%, 53%, 51%
CMY	0.2549, 0.4667, 0.4902
CMYK	0.00, 0.28, 0.32, 0.25
HSL	6°, 32%, 63%
HSV	6°, 32%, 75%
XYZ	34.0686, 30.1672, 25.1463
YIQ	151.4620, 34.1100, 9.5820

Conversions

Conversions Part 2

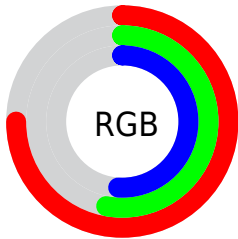
Format	Color
RYB	190, 137, 130
Decimal	12486786
CIELab	61.80, 19.84, 11.43
CIElCh	62, 22.894, 29.946
Yxy	30.1672, 0.3812, 0.3375
Android (android.graphics.Color)	4290676866 (0xFFBE8882)
YUV	151.4620, -10.5808, 33.7978
Hunter-Lab	54.9247, 14.6017, 11.3023

Details

The RGB color **190, 136, 130** is a light color, and the websafe version is hex **CC9999**. A complement of this color would be **130, 184, 190**, and the grayscale version is **152, 152, 152**.

A 20% lighter version of the original color is **247, 190, 183**, and **135, 86, 81** is the 20% darker color. If you saturate the color by 10%, you get **190, 119, 111**, and if you desaturate by 10%, it is **190, 153, 149**.

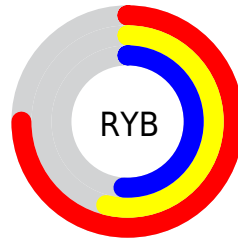
Distribution



Red (75%)

Green (53%)

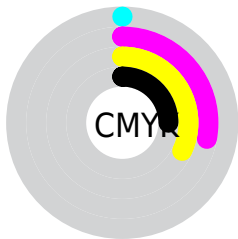
Blue (51%)



Red (75%)

Yellow (54%)

Blue (51%)

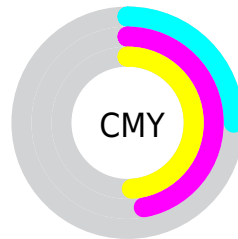


Cyan (0%)

Magenta (28%)

Yellow (32%)

Black (25%)



Cyan (25%)


Magenta (47%)

Yellow (49%)

Brightness & Saturation Gradients

These gradients show how the RGB color 190, 136, 130 changes by changing the brightness by 10 percent. The first figure shows a shift by +10% for each color and the second figure -10%.

Similar to the brightness gradients but the following saturation gradients show a change of the RGB color 190, 136, 130 by changing the saturation by 10% instead.


 190, 136, 130


255, 255, 255

 247, 190, 183

 255, 218, 211


 255, 246, 239


 190, 136, 130

 162, 110, 105

 135, 86, 81


 109, 62, 58


 83, 40, 36


 58, 18, 15


 37, 0, 0

 0, 0, 0

 190, 136, 130

 190, 119, 111

 190, 136, 130

 190, 153, 149

■ 190, 102, 92

■ 190, 170, 168

■ 190, 85, 73

■ 190, 187, 187

■ 190, 68, 54

■ 190, 204, 206

■ 190, 51, 35

■ 190, 222, 225

■ 190, 33, 16

■ 190, 239, 244

■ 190, 19, 0

■ 190, 255, 255

Harmonies

Analogous

The Analogous color harmony consists of three colors that are next to each other on the color wheel.



188, 135, 150



190, 136, 130



181, 141, 115

Triad

The Triadic color harmony groups three colors that are evenly spaced from another and form a triangle on the color wheel.



190, 136, 130



119, 159, 128



124, 151, 189

Complementary

The Complementary color scheme is a pair of colors which are on the opposite of each other on the color wheel.



190, 136, 130



130, 184, 190

Split Complementary

Split-complementary colors differ from the complementary color scheme. The scheme consists of three colors, the original color and two neighbors of the complement color.



99, 157, 184



190, 136, 130



99, 161, 149

Square

The Square scheme is like the rectangle color scheme, but the four colors are evenly spaced on the color wheel.



190, 136, 130



142, 154, 114



89, 160, 169



152, 144, 184

Rectangle

The Rectangle color scheme consists of four colors that form a rectangle on the color wheel.



190, 136, 130



171, 146, 110



89, 160, 169



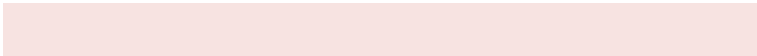
115, 153, 189

Sweetspot

The Sweet Spot groups the original color and five complimentary colors.



190, 136, 130



247, 227, 225



190, 130, 184



125, 113, 111



252, 252, 252



125, 125, 125

Same Dimension

The Same Dimension uses a secret algorithm to generate beautiful new colors.



190, 136, 130



247, 163, 153



190, 166, 130



94, 86, 85



158, 16, 0



31, 3, 0

Inverse Universe

The Inverse Universe completely reimagines the original color for something new.



130, 184, 190



153, 238, 247



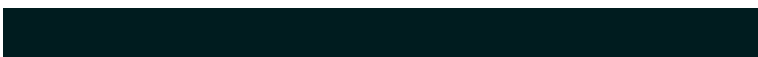
130, 154, 190



85, 93, 94



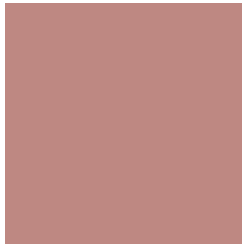
0, 142, 158



0, 28, 31

Previews

White Background



This preview shows how the RGB color 190, 136, 130 looks on a white background.

Color Contrast Check

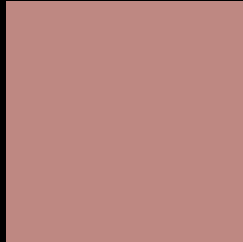
Large Text (above 18pt) WCAG AA × Fail

Any Text WCAG AA × Fail

Large Text (above 18pt) WCAG AAA × Fail

Any Text WCAG AAA × Fail

Black Background



This preview shows how the RGB color 190, 136, 130 looks on a black background.

Color Contrast Check

Large Text (above 18pt) WCAG AA ✓ Pass

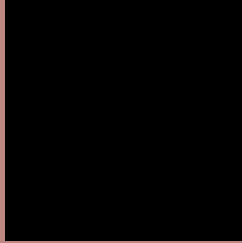
Any Text WCAG AA ✓ Pass

Large Text (above 18pt) WCAG AAA ✓ Pass

Any Text WCAG AAA ✓ Pass

If you want to check with other color combinations, try the [Color Contrast Checker](#).

RGB 190, 136, 130 Background



This preview shows how black text looks on a background with the RGB color 190, 136, 130.

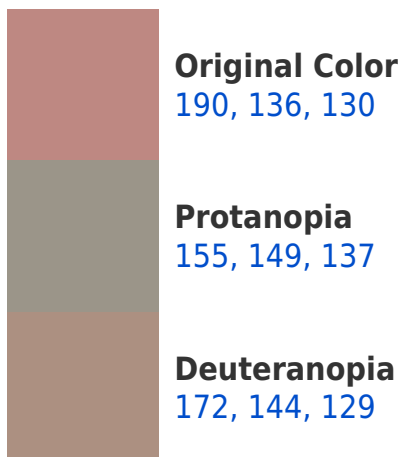



This preview shows how white text looks on a background with the RGB color 190, 136, 130.

Color Blindness Simulation

Color vision deficiency is a very complex topic, and I could not describe the different causes any better than Wikipedia does, so if you want to learn more, you should check out their [article about color blindness](#).

Dichromacy





Tritanopia
191, 134, 144

Trichromacy



Original Color

190, 136, 130

Protanomaly

168, 144, 134

Deuteranomaly

179, 141, 129

Tritanomaly

191, 135, 139

Monochromacy



Original Color

190, 136, 130

Achromatopsia

151, 151, 151

Achromatomaly

165, 146, 143

CSS Examples

Text

The CSS property to change the color of the text to RGB 190, 136, 130 is called "color". The color property can be set on classes, ids or directly on the HTML element.

This example shows how text in the color `rgb(190, 136, 130)` looks like.

```
.text, #text, p{  
    color:rgb(190, 136, 130)  
}
```

If you want to add a text shadow in that color use the text-shadow property, you can generate a text shadow directly with our [CSS Text Shadow Generator](#).

Here you see how black text with a 4 pixel rgb(190, 136, 130) colored shadow looks like.

```
.shadow{ text-shadow: 4px 4px 2px rgb(190, 136, 130) }
```

Border

The CSS property to change the border of an element to RGB 190, 136, 130 is called "border". The border property can be set on classes, ids or directly on the HTML element.

This example shows the color as border, it can be applied via the CSS property "border" or "border-color".

```
.border, #border, table{ border:4px solid rgb(190, 136, 130) }
```

If only the border color should be changed use the property `border-color`.

```
.border{ border-color:rgb(190, 136, 130) }
```

If you want to add a box shadow in that color use:

Here you see how a box with a 4 pixel `rgb(190, 136, 130)` colored shadow looks like.

```
.boxshadow{ -moz-box-shadow:4px 4px 4px  
4px rgb(190, 136, 130); -webkit-box-  
shadow:4px 4px 4px 4px rgb(190, 136, 130);  
box-shadow:4px 4px 4px 4px rgb(190, 136,  
130) }
```

Background

The CSS property to change the background color of an element to RGB 190, 136, 130 is called "background". The background property can be set on classes, ids or directly on the HTML element.

```
.background, #background, body{  
background: rgb(190, 136, 130) }
```

If only the background color should be changed can be used:

```
.background{ background-color: rgb(190,  
136, 130) }
```

This example shows the color as background, it is applied via the CSS property "background".

To optimize and compress your CSS code, you can use our [online CSS compressor and optimizer](#) based on csstidy. If you want to create a linear or radial gradient as background or border, check our [CSS Gradient Generator](#).

Hey! You found this booklet interesting? Support Converting Colors with the new Membership Option!

The pro membership hides all ads, plus gives you double the colors in the color bucket, and more awesome pro features!

[Learn more, Memberships starting at \\$2.50/m!](#)

**Follow me
on Twitter!**

@ConvertingColor