

Converting Colors

RGB(190, 152, 152)

Have a look what the booklet for
RGB(190, 152, 152) contains.

RGB(190, 152, 152)	3
<i>Conversions</i>	4
<i>Details</i>	6
<i>Harmonies</i>	11
<i>Previews</i>	23
<i>Color Blindness Simulation</i>	26
<i>CSS Examples</i>	29

Color

RGB(190, 152, 152)

Conversions

Conversions Part 1

Format	Color
Hex	BE9898
RGB	190, 152, 152
RGB Percent	75%, 60%, 60%
CMY	0.2549, 0.4039, 0.4039
CMYK	0.00, 0.20, 0.20, 0.25
HSL	0°, 23%, 67%
HSV	0°, 20%, 75%
XYZ	38.1309, 35.6706, 34.5812
YIQ	163.3620, 22.6480, 8.0560

Conversions

Conversions Part 2

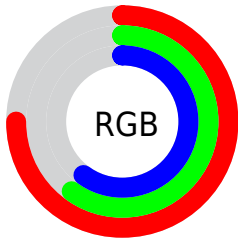
Format	Color
RYB	190, 152, 152
Decimal	12490904
CIELab	66.27, 14.16, 5.39
CIElCh	66, 15.153, 20.818
Yxy	35.6706, 0.3518, 0.3291
Android (android.graphics.Color)	4290680984 (0xFFBE9898)
YUV	163.3620, -5.6015, 23.3615
Hunter-Lab	59.7249, 9.4435, 7.4781

Details

The RGB color **190, 152, 152** is a light color, and the websafe version is hex **CC9999**. A complement of this color would be **152, 190, 190**, and the grayscale version is **163, 163, 163**.

A 20% lighter version of the original color is **247, 206, 206**, and **136, 101, 101** is the 20% darker color. If you saturate the color by 10%, you get **190, 133, 133**, and if you desaturate by 10%, it is **190, 171, 171**.

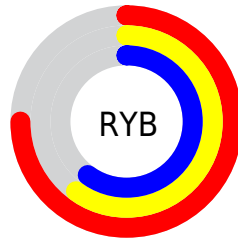
Distribution



Red (75%)

Green (60%)

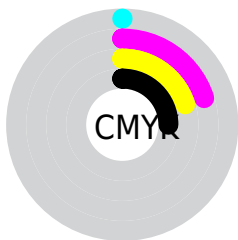
Blue (60%)



Red (75%)

Yellow (60%)

Blue (60%)

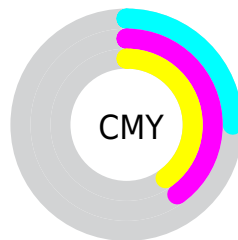


Cyan (0%)

Magenta (20%)

Yellow (20%)

Black (25%)



Cyan (25%)


Magenta (40%)

Yellow (40%)

Brightness & Saturation Gradients

These gradients show how the RGB color 190, 152, 152 changes by changing the brightness by 10 percent. The first figure shows a shift by +10% for each color and the second figure -10%.


Similar to the brightness gradients but the following saturation gradients show a change of the RGB color 190, 152, 152 by changing the saturation by 10% instead.

 190, 152, 152

255, 255, 255


 247, 206, 206

 255, 235, 234


 190, 152, 152

 163, 126, 126

 136, 101, 101

 110, 77, 77

 85, 54, 55


 61, 32, 33


 39, 11, 10

 0, 0, 0

 190, 152, 152

 190, 133, 133

 190, 152, 152

 190, 171, 171

 190, 114, 114

 190, 190, 190

 190, 95, 95

 190, 209, 209

 190, 76, 76

 190, 228, 228

 190, 57, 57

 190, 247, 247

 190, 38, 38

 190, 255, 255

 190, 19, 19

 190, 0, 0

Harmonies

Analogous

The Analogous color harmony consists of three colors that are next to each other on the color wheel.



186, 152, 166



190, 152, 152



186, 155, 141

Triad

The Triadic color harmony groups three colors that are evenly spaced from another and form a triangle on the color wheel.



190, 152, 152



146, 167, 144



141, 164, 188

Complementary

The Complementary color scheme is a pair of colors which are on the opposite of each other on the color wheel.



190, 152, 152



152, 190, 190

Split Complementary

Split-complementary colors differ from the complementary color scheme. The scheme consists of three colors, the original color and two neighbors of the complement color.



129, 167, 182



190, 152, 152



133, 169, 156

Square

The Square scheme is like the rectangle color scheme, but the four colors are evenly spaced on the color wheel.



190, 152, 152



162, 163, 136



126, 169, 170



158, 159, 186

Rectangle

The Rectangle color scheme consists of four colors that form a rectangle on the color wheel.



190, 152, 152



180, 157, 136



126, 169, 170



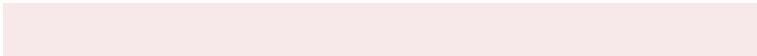
136, 165, 186

Sweetspot

The Sweet Spot groups the original color and five complimentary colors.



190, 152, 152



247, 233, 233



190, 152, 190



125, 116, 116



252, 252, 252



125, 125, 125

Same Dimension

The Same Dimension uses a secret algorithm to generate beautiful new colors.



190, 152, 152



247, 188, 188



190, 171, 152



94, 85, 85



158, 0, 0



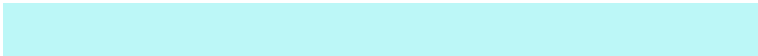
31, 0, 0

Inverse Universe

The Inverse Universe completely reimagines the original color for something new.



152, 190, 190



188, 247, 247



152, 171, 190



85, 94, 94



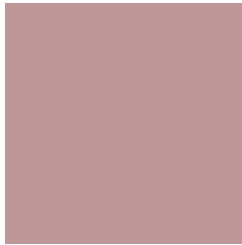
0, 158, 158



0, 31, 31

Previews

White Background



This preview shows how the RGB color 190, 152, 152 looks on a white background.

Color Contrast Check

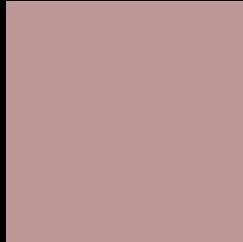
Large Text (above 18pt) WCAG AA × Fail

Any Text WCAG AA × Fail

Large Text (above 18pt) WCAG AAA × Fail

Any Text WCAG AAA × Fail

Black Background



This preview shows how the RGB color 190, 152, 152 looks on a black background.

Color Contrast Check

Large Text (above 18pt) WCAG AA ✓ Pass

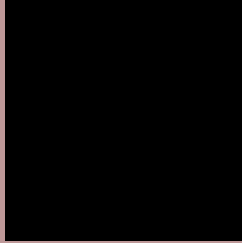
Any Text WCAG AA ✓ Pass

Large Text (above 18pt) WCAG AAA ✓ Pass

Any Text WCAG AAA ✓ Pass

If you want to check with other color combinations, try the [Color Contrast Checker](#).

RGB 190, 152, 152 Background



This preview shows how black text looks on a background with the RGB color 190, 152, 152.






This preview shows how white text looks on a background with the RGB color 190, 152, 152.

Color Blindness Simulation

Color vision deficiency is a very complex topic, and I could not describe the different causes any better than Wikipedia does, so if you want to learn more, you should check out their [article about color blindness](#).

Dichromacy

	Original Color 190, 152, 152
	Protanopia 165, 161, 157
	Deuteranopia 181, 156, 151



Tritanopia
191, 150, 162

Trichromacy



Original Color

190, 152, 152

Protanomaly

174, 158, 155

Deuteranomaly

184, 155, 151

Tritanomaly

191, 151, 158

Monochromacy



Original Color

190, 152, 152

Achromatopsia

163, 163, 163

Achromatomaly

173, 159, 159

CSS Examples

Text

The CSS property to change the color of the text to RGB 190, 152, 152 is called "color". The color property can be set on classes, ids or directly on the HTML element.

This example shows how text in the color `rgb(190, 152, 152)` looks like.

```
.text, #text, p{  
    color:rgb(190, 152, 152)  
}
```

If you want to add a text shadow in that color use the text-shadow property, you can generate a text shadow directly with our [CSS Text Shadow Generator](#).

Here you see how black text with a 4 pixel rgb(190, 152, 152) colored shadow looks like.

```
.shadow{ text-shadow: 4px 4px 2px rgb(190, 152, 152) }
```

Border

The CSS property to change the border of an element to RGB 190, 152, 152 is called "border". The border property can be set on classes, ids or directly on the HTML element.

This example shows the color as border, it can be applied via the CSS property "border" or "border-color".

```
.border, #border, table{ border:4px solid rgb(190, 152, 152) }
```

If only the border color should be changed use the property `border-color`.

```
.border{ border-color:rgb(190, 152, 152) }
```

If you want to add a box shadow in that color use:

Here you see how a box with a 4 pixel `rgb(190, 152, 152)` colored shadow looks like.

```
.boxshadow{ -moz-box-shadow:4px 4px 4px  
4px rgb(190, 152, 152); -webkit-box-  
shadow:4px 4px 4px 4px rgb(190, 152, 152);  
box-shadow:4px 4px 4px 4px rgb(190, 152,  
152) }
```

Background

The CSS property to change the background color of an element to RGB 190, 152, 152 is called "background". The background property can be set on classes, ids or directly on the HTML element.

```
.background, #background, body{  
background: rgb(190, 152, 152) }
```

If only the background color should be changed can be used:

```
.background{ background-color: rgb(190,  
152, 152) }
```

This example shows the color as background, it is applied via the CSS property "background".

To optimize and compress your CSS code, you can use our [online CSS compressor and optimizer](#) based on csstidy. If you want to create a linear or radial gradient as background or border, check our [CSS Gradient Generator](#).

Hey! You found this booklet interesting? Support Converting Colors with the new Membership Option!

The pro membership hides all ads, plus gives you double the colors in the color bucket, and more awesome pro features!

[Learn more, Memberships starting at \\$2.50/m!](#)

**Follow me
on Twitter!**

@ConvertingColor