

Converting Colors

RGB(190, 153, 117)

Have a look what the booklet for
RGB(190, 153, 117) contains.

RGB(190, 153, 117)	3
<i>Conversions</i>	4
<i>Details</i>	6
<i>Harmonies</i>	11
<i>Previews</i>	23
<i>Color Blindness Simulation</i>	26
<i>CSS Examples</i>	29

Color

RGB(190, 153, 117)

Conversions

Conversions Part 1

Format	Color
Hex	BE9975
RGB	190, 153, 117
RGB Percent	75%, 60%, 46%
CMY	0.2549, 0.4000, 0.5412
CMYK	0.00, 0.19, 0.38, 0.25
HSL	30°, 36%, 60%
HSV	30°, 38%, 75%
XYZ	35.8373, 35.0140, 21.6992
YIQ	159.9590, 33.6080, -3.3520

Conversions

Conversions Part 2

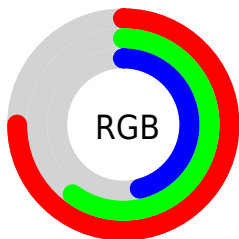
Format	Color
RYB	190, 188, 117
Decimal	12491125
CIELab	65.76, 8.81, 24.14
CIELCh	66, 25.699, 69.961
Yxy	35.0140, 0.3872, 0.3783
Android (android.graphics.Color)	4290681205 (0xFFBE9975)
YUV	159.9590, -21.1788, 26.3460
Hunter-Lab	59.1726, 4.5548, 19.6786

Details

The RGB color **190, 153, 117** is a light color, and the websafe version is hex **CC9966**. A complement of this color would be **117, 154, 190**, and the grayscale version is **160, 160, 160**.

A 20% lighter version of the original color is **247, 207, 169**, and **135, 102, 68** is the 20% darker color. If you saturate the color by 10%, you get **190, 143, 98**, and if you desaturate by 10%, it is **190, 163, 136**.

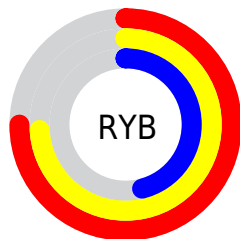
Distribution



Red (75%)

Green (60%)

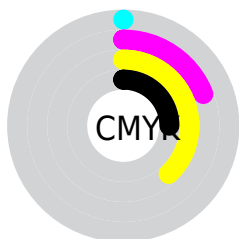
Blue (46%)



Red (75%)

Yellow (74%)

Blue (46%)

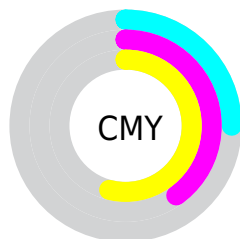


Cyan (0%)

Magenta (19%)

Yellow (38%)

Black (25%)



Cyan (25%)


Magenta (40%)

Yellow (54%)

Brightness & Saturation Gradients

These gradients show how the RGB color 190, 153, 117 changes by changing the brightness by 10 percent. The first figure shows a shift by +10% for each color and the second figure -10%.

Similar to the brightness gradients but the following saturation gradients show a change of the RGB color 190, 153, 117 by changing the saturation by 10% instead.

 190, 153, 117

255, 255, 255


 247, 207, 169


 255, 236, 197

 255, 255, 225

255, 255, 253

 190, 153, 117

 190, 143, 98

 190, 153, 117


 162, 127, 92

 135, 102, 68


 109, 78, 46


 83, 55, 24


 59, 34, 0


 35, 13, 0


 0, 0, 0


 190, 153, 117


 190, 163, 136


 190, 134, 79


 190, 172, 155

 190, 124, 60

 190, 182, 174

 190, 114, 41

 190, 192, 193

 190, 105, 22

 190, 201, 212

 190, 95, 3

 190, 211, 231

 190, 94, 0

 190, 220, 250

 190, 230, 255

 190, 240, 255

Harmonies

Analogous

The Analogous color harmony consists of three colors that are next to each other on the color wheel.



204, 146, 131



190, 153, 117



169, 161, 114

Triad

The Triadic color harmony groups three colors that are evenly spaced from another and form a triangle on the color wheel.



190, 153, 117



95, 173, 167



173, 151, 195

Complementary

The Complementary color scheme is a pair of colors which are on the opposite of each other on the color wheel.



190, 153, 117



117, 154, 190

Split Complementary

Split-complementary colors differ from the complementary color scheme. The scheme consists of three colors, the original color and two neighbors of the complement color.



142, 159, 205



190, 153, 117



91, 171, 189

Square

The Square scheme is like the rectangle color scheme, but the four colors are evenly spaced on the color wheel.



190, 153, 117



117, 171, 143



110, 166, 202



196, 145, 176

Rectangle

The Rectangle color scheme consists of four colors that form a rectangle on the color wheel.



190, 153, 117



152, 165, 119



110, 166, 202



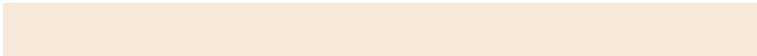
163, 154, 200

Sweetspot

The Sweet Spot groups the original color and five complimentary colors.



190, 153, 117



247, 232, 218



190, 117, 155



125, 116, 107



252, 252, 252



125, 125, 125

Same Dimension

The Same Dimension uses a secret algorithm to generate beautiful new colors.



190, 153, 117



247, 190, 134



190, 189, 117



94, 90, 85



158, 78, 0



31, 15, 0

Inverse Universe

The Inverse Universe completely reimagines the original color for something new.



117, 154, 190



134, 191, 247



117, 118, 190



85, 90, 94



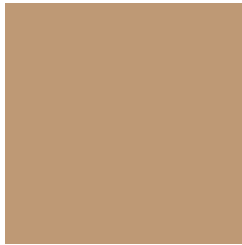
0, 80, 158



0, 16, 31

Previews

White Background



This preview shows how the RGB color 190, 153, 117 looks on a white background.

Color Contrast Check

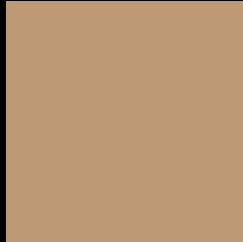
Large Text (above 18pt) WCAG AA × Fail

Any Text WCAG AA × Fail

Large Text (above 18pt) WCAG AAA × Fail

Any Text WCAG AAA × Fail

Black Background



This preview shows how the RGB color 190, 153, 117 looks on a black background.

Color Contrast Check

Large Text (above 18pt) WCAG AA ✓ Pass

Any Text WCAG AA ✓ Pass

Large Text (above 18pt) WCAG AAA ✓ Pass

Any Text WCAG AAA ✓ Pass

If you want to check with other color combinations, try the [Color Contrast Checker](#).

RGB 190, 153, 117 Background



This preview shows how black text looks on a background with the RGB color 190, 153, 117.



This preview shows how white text looks on a background with the RGB color 190, 153, 117.

Color Blindness Simulation

Color vision deficiency is a very complex topic, and I could not describe the different causes any better than Wikipedia does, so if you want to learn more, you should check out their [article about color blindness](#).

Dichromacy



Original Color
190, 153, 117

Protanopia
171, 160, 120

Deuteranopia
189, 153, 117



Tritanopia
194, 147, 159

Trichromacy



Original Color
190, 153, 117

Protanomaly
178, 157, 119

Deuteranomaly
189, 153, 117

Tritanomaly
193, 149, 144

Monochromacy



Original Color
190, 153, 117

Achromatopsia
160, 160, 160

Achromatomaly
171, 157, 144

CSS Examples

Text

The CSS property to change the color of the text to RGB 190, 153, 117 is called "color". The color property can be set on classes, ids or directly on the HTML element.

This example shows how text in the color `rgb(190, 153, 117)` looks like.

```
.text, #text, p{  
    color:rgb(190, 153, 117)  
}
```

If you want to add a text shadow in that color use the text-shadow property, you can generate a text shadow directly with our [CSS Text Shadow Generator](#).

Here you see how black text with a 4 pixel rgb(190, 153, 117) colored shadow looks like.

```
.shadow{ text-shadow: 4px 4px 2px rgb(190, 153, 117) }
```

Border

The CSS property to change the border of an element to RGB 190, 153, 117 is called "border". The border property can be set on classes, ids or directly on the HTML element.

This example shows the color as border, it can be applied via the CSS property "border" or "border-color".

```
.border, #border, table{ border:4px solid rgb(190, 153, 117) }
```

If only the border color should be changed use the property `border-color`.

```
.border{ border-color:rgb(190, 153, 117) }
```

If you want to add a box shadow in that color use:

Here you see how a box with a 4 pixel `rgb(190, 153, 117)` colored shadow looks like.

```
.boxshadow{ -moz-box-shadow:4px 4px 4px  
4px rgb(190, 153, 117); -webkit-box-  
shadow:4px 4px 4px 4px rgb(190, 153, 117);  
box-shadow:4px 4px 4px 4px rgb(190, 153,  
117) }
```

Background

The CSS property to change the background color of an element to RGB 190, 153, 117 is called "background". The background property can be set on classes, ids or directly on the HTML element.

```
.background, #background, body{  
background: rgb(190, 153, 117) }
```

If only the background color should be changed can be used:

```
.background{ background-color: rgb(190,  
153, 117) }
```

This example shows the color as background, it is applied via the CSS property "background".

To optimize and compress your CSS code, you can use our [online CSS compressor and optimizer](#) based on csstidy. If you want to create a linear or radial gradient as background or border, check our [CSS Gradient Generator](#).

Hey! You found this booklet interesting? Support Converting Colors with the new Membership Option!

The pro membership hides all ads, plus gives you double the colors in the color bucket, and more awesome pro features!

[Learn more, Memberships starting at \\$2.50/m!](#)

**Follow me
on Twitter!**

@ConvertingColor