

Converting Colors

RGB(192, 130, 93)

Have a look what the booklet for
RGB(192, 130, 93) contains.

RGB(192, 130, 93)	3
<i>Conversions</i>	4
<i>Details</i>	6
<i>Harmonies</i>	11
<i>Previews</i>	23
<i>Color Blindness Simulation</i>	26
<i>CSS Examples</i>	29

Color

RGB(192, 130, 93)

Conversions

Conversions Part 1

Format	Color
Hex	C0825D
RGB	192, 130, 93
RGB Percent	75%, 51%, 36%
CMY	0.2471, 0.4902, 0.6353
CMYK	0.00, 0.32, 0.52, 0.25
HSL	22°, 44%, 56%
HSV	22°, 52%, 75%
XYZ	31.6966, 27.9620, 14.0825
YIQ	144.3200, 48.8290, 1.6370

Conversions

Conversions Part 2

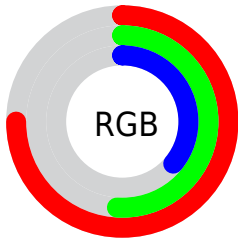
Format	Color
R_{YB}	192, 152, 93
Decimal	12616285
CIE _{Lab}	59.85, 19.77, 29.64
CIE _{LCh}	60, 35.631, 56.291
Yxy	27.9620, 0.4298, 0.3792
Android (android.graphics.Color)	4290806365 (0xFFC0825D)
YUV	144.3200, -25.3008, 41.8154
Hunter-Lab	52.8791, 14.4574, 21.2255

Details

The RGB color **192, 130, 93** is a dark color, and the websafe version is hex **CC9966**. The color can be described as middle muted orange. A complement of this color would be **93, 155, 192**, and the grayscale version is **145, 145, 145**.

A 20% lighter version of the original color is **251, 183, 144**, and **135, 80, 46** is the 20% darker color. If you saturate the color by 10%, you get **192, 118, 74**, and if you desaturate by 10%, it is **192, 142, 112**.

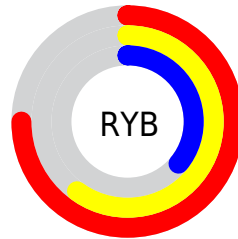
Distribution



Red (75%)

Green (51%)

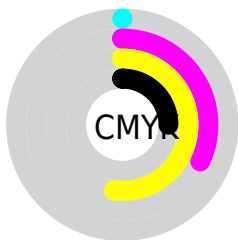
Blue (36%)



Red (75%)

Yellow (60%)

Blue (36%)

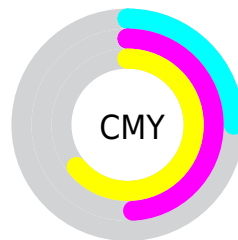


Cyan (0%)

Magenta (32%)

Yellow (52%)

Black (25%)



Cyan (25%)

Magenta (49%)

Yellow (64%)

Brightness & Saturation Gradients

These gradients show how the RGB color 192, 130, 93 changes by changing the brightness by 10 percent. The first figure shows a shift by +10% for each color and the second figure -10%.

Similar to the brightness gradients but the following saturation gradients show a change of the RGB color 192, 130, 93 by changing the saturation by 10% instead.



192, 130, 93



192, 130, 93

255, 255, 255



163, 105, 69



251, 183, 144



135, 80, 46



255, 211, 170



108, 57, 24



255, 239, 198



82, 35, 0



255, 255, 226



55, 13, 0

255, 255, 255



33, 0, 1



0, 0, 0



192, 130, 93



192, 130, 93



192, 118, 74



192, 142, 112

■ 192, 106, 55

■ 192, 154, 131

■ 192, 94, 35

■ 192, 166, 151

■ 192, 82, 16

■ 192, 178, 170

■ 192, 72, 0

■ 192, 190, 189

■ 192, 202, 208

■ 192, 214, 227

■ 192, 226, 247

■ 192, 238, 255

Harmonies

Analogous

The Analogous color harmony consists of three colors that are next to each other on the color wheel.



204, 121, 118



192, 130, 93



168, 141, 81

Triad

The Triadic color harmony groups three colors that are evenly spaced from another and form a triangle on the color wheel.



192, 130, 93



53, 161, 139



142, 138, 200

Complementary

The Complementary color scheme is a pair of colors which are on the opposite of each other on the color wheel.



192, 130, 93



93, 155, 192

Split Complementary

Split-complementary colors differ from the complementary color scheme. The scheme consists of three colors, the original color and two neighbors of the complement color.



89, 149, 206



192, 130, 93



0, 160, 171

Square

The Square scheme is like the rectangle color scheme, but the four colors are evenly spaced on the color wheel.



192, 130, 93



99, 157, 108



14, 156, 196



180, 126, 179

Rectangle

The Rectangle color scheme consists of four colors that form a rectangle on the color wheel.



192, 130, 93



147, 148, 83



14, 156, 196



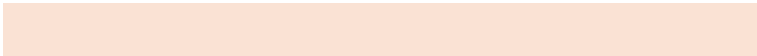
126, 141, 204

Sweetspot

The Sweet Spot groups the original color and five complimentary colors.



192, 130, 93



250, 226, 212



192, 93, 156



125, 111, 102



252, 252, 252



125, 125, 125

Same Dimension

The Same Dimension uses a secret algorithm to generate beautiful new colors.



192, 130, 93



250, 153, 95



192, 179, 93



97, 91, 87



161, 60, 0



33, 12, 0

Inverse Universe

The Inverse Universe completely reimagines the original color for something new.



93, 155, 192



95, 192, 250



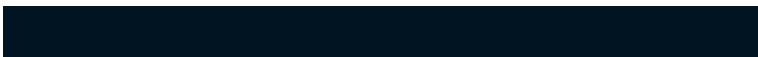
93, 106, 192



87, 93, 97



0, 101, 161



0, 21, 33

Previews

White Background



This preview shows how the RGB color 192, 130, 93 looks on a white background.

Color Contrast Check

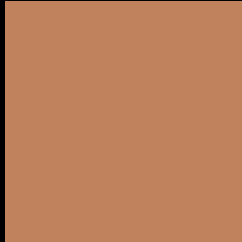
Large Text (above 18pt) WCAG AA ✓ Pass

Any Text WCAG AA ✗ Fail

Large Text (above 18pt) WCAG AAA ✗ Fail

Any Text WCAG AAA ✗ Fail

Black Background



This preview shows how the RGB color 192, 130, 93 looks on a black background.

Color Contrast Check

Large Text (above 18pt) WCAG AA ✓ Pass

Any Text WCAG AA ✓ Pass

Large Text (above 18pt) WCAG AAA ✓ Pass

Any Text WCAG AAA × Fail

If you want to check with other color combinations, try the [Color Contrast Checker](#).

RGB 192, 130, 93 Background



This preview shows how black text looks on a background with the RGB color 192, 130, 93.



This preview shows how white text looks on a background with the RGB color 192, 130, 93.

Color Blindness Simulation

Color vision deficiency is a very complex topic, and I could not describe the different causes any better than Wikipedia does, so if you want to learn more, you should check out their [article about color blindness](#).

Dichromacy



Original Color
192, 130, 93

Protanopia
156, 145, 99

Deuteranopia
174, 138, 91



Tritanopia
195, 125, 134

Trichromacy



Original Color

192, 130, 93

Protanomaly

169, 140, 97

Deuteranomaly

181, 135, 92

Tritanomaly

194, 127, 119

Monochromacy



Original Color

192, 130, 93

Achromatopsia

144, 144, 144

Achromatomaly

161, 139, 125

CSS Examples

Text

The CSS property to change the color of the text to RGB 192, 130, 93 is called "color". The color property can be set on classes, ids or directly on the HTML element.

This example shows how text in the color `rgb(192, 130, 93)` looks like.

```
.text, #text, p{  
    color:rgb(192, 130, 93)  
}
```

If you want to add a text shadow in that color use the text-shadow property, you can generate a text shadow directly with our [CSS Text Shadow Generator](#).

Here you see how black text with a 4 pixel rgb(192, 130, 93) colored shadow looks like.

```
.shadow{ text-shadow: 4px 4px 2px rgb(192, 130, 93) }
```

Border

The CSS property to change the border of an element to RGB 192, 130, 93 is called "border". The border property can be set on classes, ids or directly on the HTML element.

This example shows the color as border, it can be applied via the CSS property "border" or "border-color".

```
.border, #border, table{ border:4px solid rgb(192, 130, 93) }
```

If only the border color should be changed use the property `border-color`.

```
.border{ border-color:rgb(192, 130, 93) }
```

If you want to add a box shadow in that color use:

Here you see how a box with a 4 pixel `rgb(192, 130, 93)` colored shadow looks like.

```
.boxshadow{ -moz-box-shadow:4px 4px 4px  
4px rgb(192, 130, 93); -webkit-box-  
shadow:4px 4px 4px 4px rgb(192, 130, 93);  
box-shadow:4px 4px 4px 4px rgb(192, 130,  
93) }
```

Background

The CSS property to change the background color of an element to RGB 192, 130, 93 is called "background". The background property can be set on classes, ids or directly on the HTML element.

```
.background, #background, body{  
background: rgb(192, 130, 93) }
```

If only the background color should be changed can be used:

```
.background{ background-color: rgb(192,  
130, 93) }
```

This example shows the color as background, it is applied via the CSS property "background".

To optimize and compress your CSS code, you can use our [online CSS compressor and optimizer](#) based on csstidy. If you want to create a linear or radial gradient as background or border, check our [CSS Gradient Generator](#).

Hey! You found this booklet interesting? Support Converting Colors with the new Membership Option!

The pro membership hides all ads, plus gives you double the colors in the color bucket, and more awesome pro features!

[Learn more, Memberships starting at \\$2.50/m!](#)

**Follow me
on Twitter!**

@ConvertingColor