

Converting Colors

RGB(192, 141, 135)

Have a look what the booklet for
RGB(192, 141, 135) contains.

RGB(192, 141, 135)	3
<i>Conversions</i>	4
<i>Details</i>	6
<i>Harmonies</i>	11
<i>Previews</i>	23
<i>Color Blindness Simulation</i>	26
<i>CSS Examples</i>	29

Color

RGB(192, 141, 135)

Conversions

Conversions Part 1

Format	Color
Hex	C08D87
RGB	192, 141, 135
RGB Percent	75%, 55%, 53%
CMY	0.2471, 0.4471, 0.4706
CMYK	0.00, 0.27, 0.30, 0.25
HSL	6°, 31%, 64%
HSV	6°, 30%, 75%
XYZ	35.6363, 32.0055, 27.2211
YIQ	155.5650, 32.3220, 8.9460

Conversions

Conversions Part 2

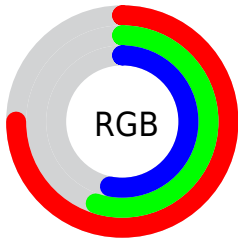
Format	Color
RYB	192, 142, 135
Decimal	12619143
CIELab	63.35, 18.53, 10.81
CIELCh	63, 21.451, 30.271
Yxy	32.0055, 0.3757, 0.3374
Android (android.graphics.Color)	4290809223 (0xFFC08D87)
YUV	155.5650, -10.1385, 31.9535
Hunter-Lab	56.5734, 13.4359, 11.0731

Details

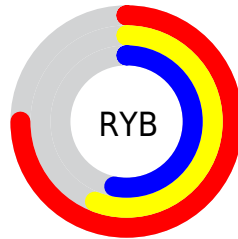
The RGB color **192, 141, 135** is a light color, and the websafe version is hex **CC9999**. A complement of this color would be **135, 186, 192**, and the grayscale version is **156, 156, 156**.

A 20% lighter version of the original color is **249, 195, 188**, and **137, 90, 85** is the 20% darker color. If you saturate the color by 10%, you get **192, 124, 116**, and if you desaturate by 10%, it is **192, 158, 154**.

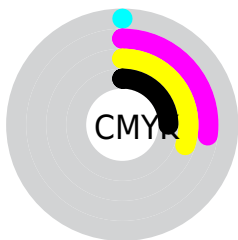
Distribution



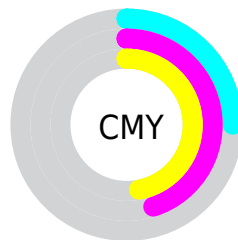
- Red (75%)
- Green (55%)
- Blue (53%)



- Red (75%)
- Yellow (56%)
- Blue (53%)



- Cyan (0%)
- Magenta (27%)
- Yellow (30%)
- Black (25%)



- Cyan (25%)
- Magenta (45%)
- Yellow (47%)

Brightness & Saturation Gradients

These gradients show how the RGB color 192, 141, 135 changes by changing the brightness by 10 percent. The first figure shows a shift by +10% for each color and the second figure -10%.

Similar to the brightness gradients but the following saturation gradients show a change of the RGB color 192, 141, 135 by changing the saturation by 10% instead.


 192, 141, 135


255, 255, 255

 249, 195, 188


 255, 223, 216

 255, 252, 244


 192, 141, 135

 164, 115, 110

 137, 90, 85

 111, 67, 62


 85, 44, 40


 61, 22, 20

 39, 0, 0

 0, 0, 0


 192, 141, 135

 192, 124, 116


 192, 141, 135

 192, 158, 154

 192, 107, 97

 192, 175, 173

 192, 89, 77

 192, 193, 193

 192, 72, 58

 192, 210, 212

 192, 55, 39

 192, 227, 231

 192, 38, 20

 192, 244, 250

 192, 21, 1

 192, 255, 255

 192, 20, 0

Harmonies

Analogous

The Analogous color harmony consists of three colors that are next to each other on the color wheel.



190, 140, 154



192, 141, 135



184, 146, 121

Triad

The Triadic color harmony groups three colors that are evenly spaced from another and form a triangle on the color wheel.



192, 141, 135



125, 162, 134



131, 155, 191

Complementary

The Complementary color scheme is a pair of colors which are on the opposite of each other on the color wheel.



192, 141, 135



135, 186, 192

Split Complementary

Split-complementary colors differ from the complementary color scheme. The scheme consists of three colors, the original color and two neighbors of the complement color.



108, 160, 186



192, 141, 135



107, 164, 153

Square

The Square scheme is like the rectangle color scheme, but the four colors are evenly spaced on the color wheel.



192, 141, 135



147, 158, 120



99, 164, 172



157, 148, 186

Rectangle

The Rectangle color scheme consists of four colors that form a rectangle on the color wheel.



192, 141, 135



173, 150, 116



99, 164, 172



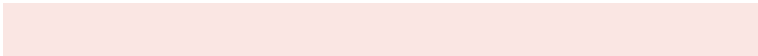
122, 157, 191

Sweetspot

The Sweet Spot groups the original color and five complimentary colors.



192, 141, 135



250, 230, 227



192, 135, 186



125, 113, 111



252, 252, 252



125, 125, 125

Same Dimension

The Same Dimension uses a secret algorithm to generate beautiful new colors.



192, 141, 135



250, 169, 160



192, 169, 135



97, 88, 87



161, 17, 0



33, 3, 0

Inverse Universe

The Inverse Universe completely reimagines the original color for something new.



135, 186, 192



160, 240, 250



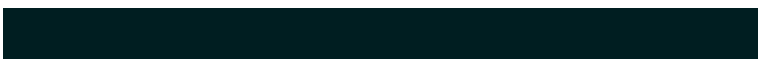
135, 158, 192



87, 96, 97



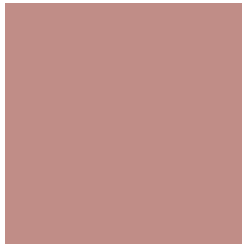
0, 144, 161



0, 30, 33

Previews

White Background



This preview shows how the RGB color 192, 141, 135 looks on a white background.

Color Contrast Check

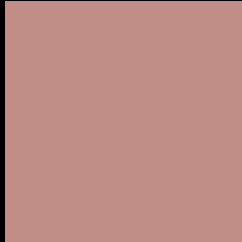
Large Text (above 18pt) WCAG AA × Fail

Any Text WCAG AA × Fail

Large Text (above 18pt) WCAG AAA × Fail

Any Text WCAG AAA × Fail

Black Background



This preview shows how the RGB color 192, 141, 135 looks on a black background.

Color Contrast Check

Large Text (above 18pt) WCAG AA ✓ Pass

Any Text WCAG AA ✓ Pass

Large Text (above 18pt) WCAG AAA ✓ Pass

Any Text WCAG AAA ✓ Pass

If you want to check with other color combinations, try the [Color Contrast Checker](#).

RGB 192, 141, 135 Background



This preview shows how black text looks on a background with the RGB color 192, 141, 135.

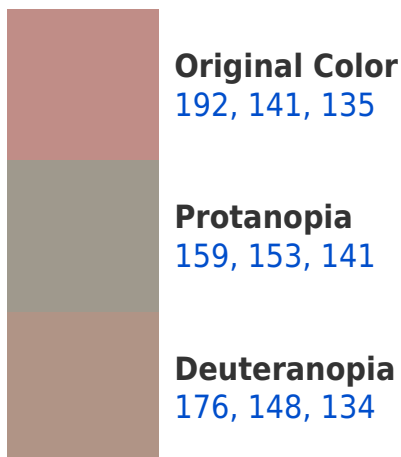


This preview shows how white text looks on a background with the RGB color 192, 141, 135.

Color Blindness Simulation

Color vision deficiency is a very complex topic, and I could not describe the different causes any better than Wikipedia does, so if you want to learn more, you should check out their [article about color blindness](#).

Dichromacy





Tritanopia

194, 139, 149

Trichromacy



Original Color

192, 141, 135

Protanomaly

171, 149, 139

Deuteranomaly

182, 145, 134

Tritanomaly

193, 140, 144

Monochromacy



Original Color

192, 141, 135

Achromatopsia

156, 156, 156

Achromatomaly

169, 151, 148

CSS Examples

Text

The CSS property to change the color of the text to RGB 192, 141, 135 is called "color". The color property can be set on classes, ids or directly on the HTML element.

This example shows how text in the color `rgb(192, 141, 135)` looks like.

```
.text, #text, p{  
    color:rgb(192, 141, 135)  
}
```

If you want to add a text shadow in that color use the text-shadow property, you can generate a text shadow directly with our [CSS Text Shadow Generator](#).

Here you see how black text with a 4 pixel rgb(192, 141, 135) colored shadow looks like.

```
.shadow{ text-shadow: 4px 4px 2px rgb(192, 141, 135) }
```

Border

The CSS property to change the border of an element to RGB 192, 141, 135 is called "border". The border property can be set on classes, ids or directly on the HTML element.

This example shows the color as border, it can be applied via the CSS property "border" or "border-color".

```
.border, #border, table{ border:4px solid rgb(192, 141, 135) }
```

If only the border color should be changed use the property `border-color`.

```
.border{ border-color:rgb(192, 141, 135) }
```

If you want to add a box shadow in that color use:

Here you see how a box with a 4 pixel `rgb(192, 141, 135)` colored shadow looks like.

```
.boxshadow{ -moz-box-shadow:4px 4px 4px 4px rgb(192, 141, 135); -webkit-box-shadow:4px 4px 4px 4px rgb(192, 141, 135); box-shadow:4px 4px 4px 4px rgb(192, 141, 135) }
```

Background

The CSS property to change the background color of an element to RGB 192, 141, 135 is called "background". The background property can be set on classes, ids or directly on the HTML element.

```
.background, #background, body{  
background: rgb(192, 141, 135) }
```

If only the background color should be changed can be used:

```
.background{ background-color: rgb(192,  
141, 135) }
```

This example shows the color as background, it is applied via the CSS property "background".

To optimize and compress your CSS code, you can use our [online CSS compressor and optimizer](#) based on csstidy. If you want to create a linear or radial gradient as background or border, check our [CSS Gradient Generator](#).

Hey! You found this booklet interesting? Support Converting Colors with the new Membership Option!

The pro membership hides all ads, plus gives you double the colors in the color bucket, and more awesome pro features!

[Learn more, Memberships starting at \\$2.50/m!](#)

**Follow me
on Twitter!**

@ConvertingColor