

Converting Colors

RGB(193, 138, 139)

Have a look what the booklet for
RGB(193, 138, 139) contains.

RGB(193, 138, 139)	3
<i>Conversions</i>	4
<i>Details</i>	6
<i>Harmonies</i>	11
<i>Previews</i>	23
<i>Color Blindness Simulation</i>	26
<i>CSS Examples</i>	29

Color

RGB(193, 138, 139)

Conversions

Conversions Part 1

Format	Color
Hex	C18A8B
RGB	193, 138, 139
RGB Percent	76%, 54%, 55%
CMY	0.2431, 0.4588, 0.4549
CMYK	0.00, 0.28, 0.28, 0.24
HSL	359°, 31%, 65%
HSV	359°, 28%, 76%
XYZ	35.7410, 31.3785, 28.5990
YIQ	154.5590, 32.4590, 11.9710

Conversions

Conversions Part 2

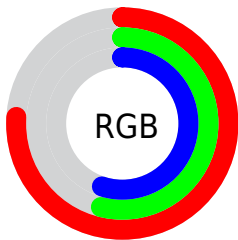
Format	Color
RYB	193, 138, 139
Decimal	12683915
CIELab	62.83, 21.13, 7.82
CIElCh	63, 22.529, 20.319
Yxy	31.3785, 0.3734, 0.3278
Android (android.graphics.Color)	4290873995 (0xFFC18A8B)
YUV	154.5590, -7.6706, 33.7128
Hunter-Lab	56.0165, 15.8620, 8.9413

Details

The RGB color **193, 138, 139** is a light color, and the websafe version is hex **CC9999**. A complement of this color would be **138, 193, 192**, and the grayscale version is **155, 155, 155**.

A 20% lighter version of the original color is **250, 192, 192**, and **138, 88, 89** is the 20% darker color. If you saturate the color by 10%, you get **193, 119, 120**, and if you desaturate by 10%, it is **193, 157, 158**.

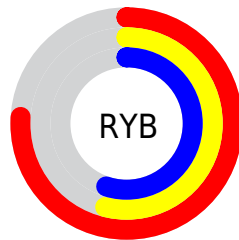
Distribution



Red (76%)

Green (54%)

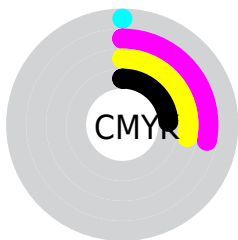
Blue (55%)



Red (76%)

Yellow (54%)

Blue (55%)

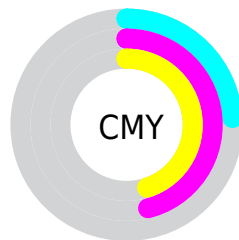


Cyan (0%)

Magenta (28%)

Yellow (28%)

Black (24%)



Cyan (24%)

Magenta (46%)

Yellow (45%)

Brightness & Saturation Gradients

These gradients show how the RGB color 193, 138, 139 changes by changing the brightness by 10 percent. The first figure shows a shift by +10% for each color and the second figure -10%.

Similar to the brightness gradients but the following saturation gradients show a change of the RGB color 193, 138, 139 by changing the saturation by 10% instead.

 193, 138, 139

255, 255, 255

 250, 192, 192

 255, 220, 220

 255, 248, 249


 193, 138, 139

 165, 112, 114

 138, 88, 89

 112, 64, 66

 86, 41, 44

 61, 19, 23

 40, 0, 0

 0, 0, 0

 193, 138, 139

 193, 119, 120

 193, 138, 139

 193, 157, 158

■ 193, 99, 101

■ 193, 177, 177

■ 193, 80, 82

■ 193, 196, 196

■ 193, 61, 63

■ 193, 215, 215

■ 193, 41, 44

■ 193, 234, 234

■ 193, 22, 25

■ 193, 254, 253

■ 193, 3, 6

■ 193, 255, 255

■ 193, 0, 4

Harmonies

Analogous

The Analogous color harmony consists of three colors that are next to each other on the color wheel.



188, 138, 159



193, 138, 139



187, 142, 122

Triad

The Triadic color harmony groups three colors that are evenly spaced from another and form a triangle on the color wheel.



193, 138, 139



130, 160, 126



119, 156, 191

Complementary

The Complementary color scheme is a pair of colors which are on the opposite of each other on the color wheel.



193, 138, 139



138, 193, 192

Split Complementary

Split-complementary colors differ from the complementary color scheme. The scheme consists of three colors, the original color and two neighbors of the complement color.



98, 161, 182



193, 138, 139



108, 163, 145

Square

The Square scheme is like the rectangle color scheme, but the four colors are evenly spaced on the color wheel.



193, 138, 139



153, 155, 114



95, 163, 165



147, 149, 189

Rectangle

The Rectangle color scheme consists of four colors that form a rectangle on the color wheel.



193, 138, 139



178, 146, 115



95, 163, 165



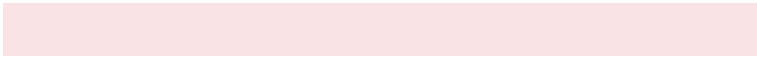
111, 158, 189

Sweetspot

The Sweet Spot groups the original color and five complimentary colors.



193, 138, 139



250, 227, 228



191, 138, 193



125, 111, 111



252, 252, 252



125, 125, 125

Same Dimension

The Same Dimension uses a secret algorithm to generate beautiful new colors.



193, 138, 139



250, 165, 166



193, 164, 138



97, 87, 87



161, 0, 3



33, 0, 1

Inverse Universe

The Inverse Universe completely reimagines the original color for something new.



193, 138, 139



250, 165, 166



138, 167, 193



97, 87, 87



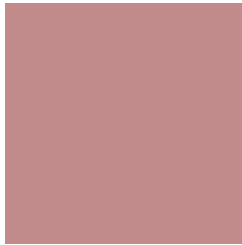
161, 0, 3



33, 0, 1

Previews

White Background



This preview shows how the RGB color 193, 138, 139 looks on a white background.

Color Contrast Check

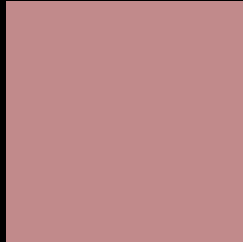
Large Text (above 18pt) WCAG AA × Fail

Any Text WCAG AA × Fail

Large Text (above 18pt) WCAG AAA × Fail

Any Text WCAG AAA × Fail

Black Background



This preview shows how the RGB color 193, 138, 139 looks on a black background.

Color Contrast Check

Large Text (above 18pt) WCAG AA ✓ Pass

Any Text WCAG AA ✓ Pass

Large Text (above 18pt) WCAG AAA ✓ Pass

Any Text WCAG AAA ✓ Pass

If you want to check with other color combinations, try the [Color Contrast Checker](#).

RGB 193, 138, 139 Background



This preview shows how black text looks on a background with the RGB color 193, 138, 139.



This preview shows how white text looks on a background with the RGB color 193, 138, 139.

Color Blindness Simulation

Color vision deficiency is a very complex topic, and I could not describe the different causes any better than Wikipedia does, so if you want to learn more, you should check out their [article about color blindness](#).

Dichromacy



Original Color
193, 138, 139

Protanopia
156, 152, 146

Deuteranopia
172, 147, 137



Tritanopia

194, 137, 147

Trichromacy



Original Color
193, 138, 139

Protanomaly
169, 147, 143

Deuteranomaly
180, 144, 138

Tritanomaly
194, 137, 144

Monochromacy



Original Color
193, 138, 139

Achromatopsia
155, 155, 155

Achromatomaly
169, 149, 149

CSS Examples

Text

The CSS property to change the color of the text to RGB 193, 138, 139 is called "color". The color property can be set on classes, ids or directly on the HTML element.

This example shows how text in the color `rgb(193, 138, 139)` looks like.

```
.text, #text, p{  
    color:rgb(193, 138, 139)  
}
```

If you want to add a text shadow in that color use the text-shadow property, you can generate a text shadow directly with our [CSS Text Shadow Generator](#).

Here you see how black text with a 4 pixel rgb(193, 138, 139) colored shadow looks like.

```
.shadow{ text-shadow: 4px 4px 2px rgb(193, 138, 139) }
```

Border

The CSS property to change the border of an element to RGB 193, 138, 139 is called "border". The border property can be set on classes, ids or directly on the HTML element.

This example shows the color as border, it can be applied via the CSS property "border" or "border-color".

```
.border, #border, table{ border:4px solid rgb(193, 138, 139) }
```

If only the border color should be changed use the property `border-color`.

```
.border{ border-color:rgb(193, 138, 139) }
```

If you want to add a box shadow in that color use:

Here you see how a box with a 4 pixel `rgb(193, 138, 139)` colored shadow looks like.

```
.boxshadow{ -moz-box-shadow:4px 4px 4px  
4px rgb(193, 138, 139); -webkit-box-  
shadow:4px 4px 4px 4px rgb(193, 138, 139);  
box-shadow:4px 4px 4px 4px rgb(193, 138,  
139) }
```

Background

The CSS property to change the background color of an element to RGB 193, 138, 139 is called "background". The background property can be set on classes, ids or directly on the HTML element.

```
.background, #background, body{  
background: rgb(193, 138, 139) }
```

If only the background color should be changed can be used:

```
.background{ background-color: rgb(193,  
138, 139) }
```

This example shows the color as background, it is applied via the CSS property "background".

To optimize and compress your CSS code, you can use our [online CSS compressor and optimizer](#) based on csstidy. If you want to create a linear or radial gradient as background or border, check our [CSS Gradient Generator](#).

Hey! You found this booklet interesting? Support Converting Colors with the new Membership Option!

The pro membership hides all ads, plus gives you double the colors in the color bucket, and more awesome pro features!

[Learn more, Memberships starting at \\$2.50/m!](#)

**Follow me
on Twitter!**

@ConvertingColor