

Converting Colors

RGB(193, 140, 144)

Have a look what the booklet for
RGB(193, 140, 144) contains.

RGB(193, 140, 144)	3
<i>Conversions</i>	4
<i>Details</i>	6
<i>Harmonies</i>	11
<i>Previews</i>	23
<i>Color Blindness Simulation</i>	26
<i>CSS Examples</i>	29

Color

RGB(193, 140, 144)

Conversions

Conversions Part 1

Format	Color
Hex	C18C90
RGB	193, 140, 144
RGB Percent	76%, 55%, 56%
CMY	0.2431, 0.4510, 0.4353
CMYK	0.00, 0.27, 0.25, 0.24
HSL	355°, 30%, 65%
HSV	355°, 27%, 76%
XYZ	36.4044, 32.1072, 30.6642
YIQ	156.3030, 30.3040, 12.4800

Conversions

Conversions Part 2

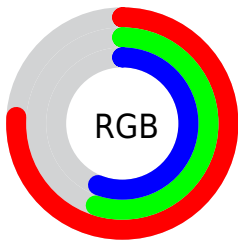
Format	Color
R _Y B	193, 140, 144
Decimal	12684432
CIE Lab	63.43, 20.74, 5.86
CIE LCh	63, 21.547, 15.768
Yxy	32.1072, 0.3671, 0.3237
Android (android.graphics.Color)	4290874512 (0xFFC18C90)
YUV	156.3030, -6.0654, 32.1833
Hunter-Lab	56.6633, 15.5202, 7.5786

Details

The RGB color **193, 140, 144** is a light color, and the websafe version is hex **CC9999**. A complement of this color would be **140, 193, 189**, and the grayscale version is **156, 156, 156**.

A 20% lighter version of the original color is **250, 194, 198**, and **138, 89, 94** is the 20% darker color. If you saturate the color by 10%, you get **193, 121, 126**, and if you desaturate by 10%, it is **193, 159, 162**.

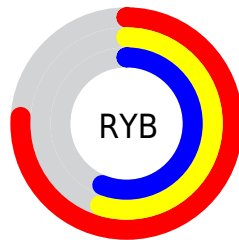
Distribution



Red (76%)

Green (55%)

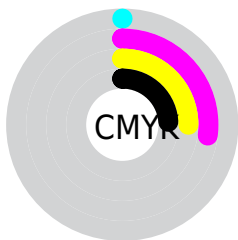
Blue (56%)



Red (76%)

Yellow (55%)

Blue (56%)

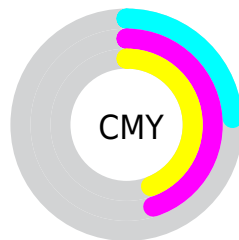


Cyan (0%)

Magenta (27%)

Yellow (25%)

Black (24%)



Cyan (24%)

Magenta (45%)

Yellow (44%)

Brightness & Saturation Gradients

These gradients show how the RGB color 193, 140, 144 changes by changing the brightness by 10 percent. The first figure shows a shift by +10% for each color and the second figure -10%.

Similar to the brightness gradients but the following saturation gradients show a change of the RGB color 193, 140, 144 by changing the saturation by 10% instead.

 193, 140, 144

255, 255, 255

 250, 194, 198

 255, 222, 226

 255, 251, 254

 193, 140, 144

 165, 114, 118

 138, 89, 94

 112, 66, 70

 87, 43, 48

 62, 21, 27

 41, 0, 0

 0, 0, 0

 193, 140, 144

 193, 121, 126


 193, 140, 144

 193, 159, 162

 193, 101, 108

 193, 179, 180

 193, 82, 90

 193, 198, 198

 193, 63, 73

 193, 217, 215

 193, 44, 55

 193, 237, 233

 193, 24, 37

 193, 255, 251

 193, 5, 19

 193, 255, 255

 193, 0, 15

Harmonies

Analogous

The Analogous color harmony consists of three colors that are next to each other on the color wheel.



186, 141, 164



193, 140, 144



189, 143, 127

Triad

The Triadic color harmony groups three colors that are evenly spaced from another and form a triangle on the color wheel.



193, 140, 144



136, 161, 126



119, 158, 190

Complementary

The Complementary color scheme is a pair of colors which are on the opposite of each other on the color wheel.



193, 140, 144



140, 193, 189

Split Complementary

Split-complementary colors differ from the complementary color scheme. The scheme consists of three colors, the original color and two neighbors of the complement color.



101, 163, 180



193, 140, 144



115, 164, 144

Square

The Square scheme is like the rectangle color scheme, but the four colors are evenly spaced on the color wheel.



193, 140, 144



157, 156, 117



100, 164, 163



144, 152, 190

Rectangle

The Rectangle color scheme consists of four colors that form a rectangle on the color wheel.



193, 140, 144



181, 147, 119



100, 164, 163



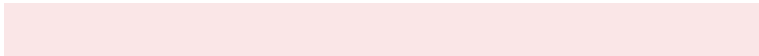
111, 160, 188

Sweetspot

The Sweet Spot groups the original color and five complimentary colors.



193, 140, 144



250, 230, 231



189, 140, 193



125, 112, 113



252, 252, 252



125, 125, 125

Same Dimension

The Same Dimension uses a secret algorithm to generate beautiful new colors.



193, 140, 144



250, 167, 174



193, 162, 140



97, 87, 88



161, 0, 12



33, 0, 3

Inverse Universe

The Inverse Universe completely reimagines the original color for something new.



193, 140, 144



250, 167, 174



140, 171, 193



97, 87, 88



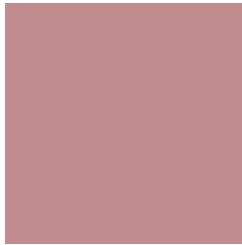
161, 0, 12



33, 0, 3

Previews

White Background



This preview shows how the RGB color 193, 140, 144 looks on a white background.

Color Contrast Check

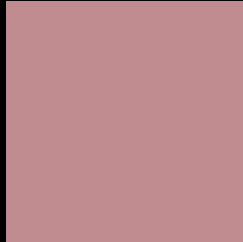
Large Text (above 18pt) WCAG AA × Fail

Any Text WCAG AA × Fail

Large Text (above 18pt) WCAG AAA × Fail

Any Text WCAG AAA × Fail

Black Background



This preview shows how the RGB color 193, 140, 144 looks on a black background.

Color Contrast Check

Large Text (above 18pt) WCAG AA ✓ Pass

Any Text WCAG AA ✓ Pass

Large Text (above 18pt) WCAG AAA ✓ Pass

Any Text WCAG AAA ✓ Pass

If you want to check with other color combinations, try the [Color Contrast Checker](#).

RGB 193, 140, 144 Background



This preview shows how black text looks on a background with the RGB color 193, 140, 144.




This preview shows how white text looks on a background with the RGB color 193, 140, 144.

Color Blindness Simulation

Color vision deficiency is a very complex topic, and I could not describe the different causes any better than Wikipedia does, so if you want to learn more, you should check out their [article about color blindness](#).

Dichromacy





Tritanopia
194, 139, 150

Trichromacy



Original Color

193, 140, 144

Protanomaly

170, 148, 148

Deuteranomaly

180, 146, 143

Tritanomaly

194, 139, 148

Monochromacy



Original Color

193, 140, 144

Achromatopsia

156, 156, 156

Achromatomaly

169, 150, 152

CSS Examples

Text

The CSS property to change the color of the text to RGB 193, 140, 144 is called "color". The color property can be set on classes, ids or directly on the HTML element.

This example shows how text in the color `rgb(193, 140, 144)` looks like.

```
.text, #text, p{  
    color:rgb(193, 140, 144)  
}
```

If you want to add a text shadow in that color use the text-shadow property, you can generate a text shadow directly with our [CSS Text Shadow Generator](#).

Here you see how black text with a 4 pixel rgb(193, 140, 144) colored shadow looks like.

```
.shadow{ text-shadow: 4px 4px 2px rgb(193, 140, 144) }
```

Border

The CSS property to change the border of an element to RGB 193, 140, 144 is called "border". The border property can be set on classes, ids or directly on the HTML element.

This example shows the color as border, it can be applied via the CSS property "border" or "border-color".

```
.border, #border, table{ border:4px solid rgb(193, 140, 144) }
```

If only the border color should be changed use the property `border-color`.

```
.border{ border-color:rgb(193, 140, 144) }
```

If you want to add a box shadow in that color use:

Here you see how a box with a 4 pixel `rgb(193, 140, 144)` colored shadow looks like.

```
.boxshadow{ -moz-box-shadow:4px 4px 4px  
4px rgb(193, 140, 144); -webkit-box-  
shadow:4px 4px 4px 4px rgb(193, 140, 144);  
box-shadow:4px 4px 4px 4px rgb(193, 140,  
144) }
```

Background

The CSS property to change the background color of an element to RGB 193, 140, 144 is called "background". The background property can be set on classes, ids or directly on the HTML element.

```
.background, #background, body{  
background: rgb(193, 140, 144) }
```

If only the background color should be changed can be used:

```
.background{ background-color: rgb(193,  
140, 144) }
```

This example shows the color as background, it is applied via the CSS property "background".

To optimize and compress your CSS code, you can use our [online CSS compressor and optimizer](#) based on csstidy. If you want to create a linear or radial gradient as background or border, check our [CSS Gradient Generator](#).

Hey! You found this booklet interesting? Support Converting Colors with the new Membership Option!

The pro membership hides all ads, plus gives you double the colors in the color bucket, and more awesome pro features!

[Learn more, Memberships starting at \\$2.50/m!](#)

**Follow me
on Twitter!**

@ConvertingColor