

Converting Colors

RGB(193, 150, 125)

Have a look what the booklet for
RGB(193, 150, 125) contains.

RGB(193, 150, 125)	3
<i>Conversions</i>	4
<i>Details</i>	6
<i>Harmonies</i>	11
<i>Previews</i>	23
<i>Color Blindness Simulation</i>	26
<i>CSS Examples</i>	29

Color

RGB(193, 150, 125)

Conversions

Conversions Part 1

Format	Color
Hex	C1967D
RGB	193, 150, 125
RGB Percent	76%, 59%, 49%
CMY	0.2431, 0.4118, 0.5098
CMYK	0.00, 0.22, 0.35, 0.24
HSL	22°, 35%, 62%
HSV	22°, 35%, 76%
XYZ	36.6003, 34.6308, 24.1574
YIQ	160.0070, 33.6530, 1.3410

Conversions

Conversions Part 2

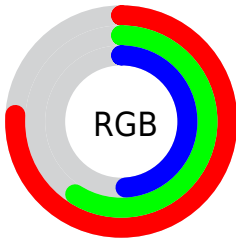
Format	Color
RYB	193, 165, 125
Decimal	12686973
CIELab	65.46, 12.64, 19.37
CIElCh	65, 23.132, 56.873
Yxy	34.6308, 0.3837, 0.3631
Android (android.graphics.Color)	4290877053 (0xFFC1967D)
YUV	160.0070, -17.2585, 28.9349
Hunter-Lab	58.8480, 8.0337, 16.8547

Details

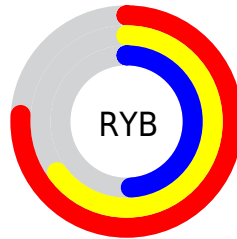
The RGB color **193, 150, 125** is a light color, and the websafe version is hex **CC9999**. A complement of this color would be **125, 168, 193**, and the grayscale version is **160, 160, 160**.

A 20% lighter version of the original color is **251, 204, 178**, and **138, 99, 76** is the 20% darker color. If you saturate the color by 10%, you get **193, 138, 106**, and if you desaturate by 10%, it is **193, 162, 144**.

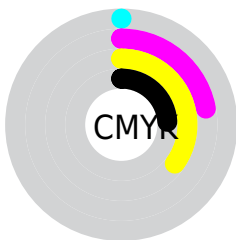
Distribution



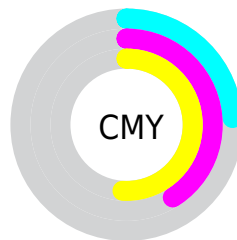
- Red (76%)
- Green (59%)
- Blue (49%)



- Red (76%)
- Yellow (65%)
- Blue (49%)



- Cyan (0%)
- Magenta (22%)
- Yellow (35%)
- Black (24%)



- Cyan (24%)
- Magenta (41%)
- Yellow (51%)

Brightness & Saturation Gradients

These gradients show how the RGB color 193, 150, 125 changes by changing the brightness by 10 percent. The first figure shows a shift by +10% for each color and the second figure -10%.

Similar to the brightness gradients but the following saturation gradients show a change of the RGB color 193, 150, 125 by changing the saturation by 10% instead.


 193, 150, 125

255, 255, 255

 251, 204, 178


 255, 232, 205

 255, 255, 233


 193, 150, 125

 165, 124, 100

 138, 99, 76

 112, 75, 53

 86, 52, 31

 61, 31, 9

 38, 9, 0

 0, 0, 0

 193, 150, 125

 193, 138, 106

 193, 150, 125

 193, 162, 144

193, 126, 86

193, 174, 164

193, 113, 67

193, 187, 183

193, 101, 48

193, 199, 202

193, 89, 28

193, 211, 222

193, 77, 9

193, 223, 241

193, 71, 0

193, 235, 255

193, 248, 255

193, 255, 255

Harmonies

Analogous

The Analogous color harmony consists of three colors that are next to each other on the color wheel.



201, 145, 141



193, 150, 125



176, 157, 118

Triad

The Triadic color harmony groups three colors that are evenly spaced from another and form a triangle on the color wheel.



193, 150, 125



109, 171, 156



159, 154, 196

Complementary

The Complementary color scheme is a pair of colors which are on the opposite of each other on the color wheel.



193, 150, 125



125, 168, 193

Split Complementary

Split-complementary colors differ from the complementary color scheme. The scheme consists of three colors, the original color and two neighbors of the complement color.



131, 161, 200



193, 150, 125



99, 170, 177

Square

The Square scheme is like the rectangle color scheme, but the four colors are evenly spaced on the color wheel.



193, 150, 125



131, 168, 136



107, 167, 193



184, 148, 182

Rectangle

The Rectangle color scheme consists of four colors that form a rectangle on the color wheel.



193, 150, 125



162, 161, 119



107, 167, 193



150, 157, 198

Sweetspot

The Sweet Spot groups the original color and five complimentary colors.



193, 150, 125



250, 233, 222



193, 125, 168



125, 115, 109



252, 252, 252



125, 125, 125

Same Dimension

The Same Dimension uses a secret algorithm to generate beautiful new colors.



193, 150, 125



250, 184, 145



193, 184, 125



97, 91, 87



161, 59, 0



33, 12, 0

Inverse Universe

The Inverse Universe completely reimagines the original color for something new.



125, 168, 193



145, 211, 250



125, 134, 193



87, 93, 97



0, 102, 161



0, 21, 33

Previews

White Background



This preview shows how the RGB color 193, 150, 125 looks on a white background.

Color Contrast Check

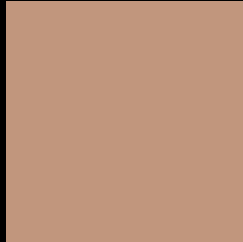
Large Text (above 18pt) WCAG AA × Fail

Any Text WCAG AA × Fail

Large Text (above 18pt) WCAG AAA × Fail

Any Text WCAG AAA × Fail

Black Background



This preview shows how the RGB color 193, 150, 125 looks on a black background.

Color Contrast Check

Large Text (above 18pt) WCAG AA ✓ Pass

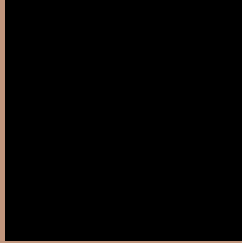
Any Text WCAG AA ✓ Pass

Large Text (above 18pt) WCAG AAA ✓ Pass

Any Text WCAG AAA ✓ Pass

If you want to check with other color combinations, try the [Color Contrast Checker](#).

RGB 193, 150, 125 Background



This preview shows how black text looks on a background with the RGB color 193, 150, 125.



This preview shows how white text looks on a background with the RGB color 193, 150, 125.

Color Blindness Simulation

Color vision deficiency is a very complex topic, and I could not describe the different causes any better than Wikipedia does, so if you want to learn more, you should check out their [article about color blindness](#).

Dichromacy



Original Color
193, 150, 125

Protanopia
169, 159, 129

Deuteranopia
186, 153, 124



Tritanopia
196, 146, 157

Trichromacy



Original Color
193, 150, 125

Protanomaly
178, 156, 128

Deuteranomaly
189, 152, 124

Tritanomaly
195, 147, 145

Monochromacy



Original Color
193, 150, 125

Achromatopsia
160, 160, 160

Achromatomaly
172, 156, 147

CSS Examples

Text

The CSS property to change the color of the text to RGB 193, 150, 125 is called "color". The color property can be set on classes, ids or directly on the HTML element.

This example shows how text in the color `rgb(193, 150, 125)` looks like.

```
.text, #text, p{  
    color:rgb(193, 150, 125)  
}
```

If you want to add a text shadow in that color use the text-shadow property, you can generate a text shadow directly with our [CSS Text Shadow Generator](#).

Here you see how black text with a 4 pixel rgb(193, 150, 125) colored shadow looks like.

```
.shadow{ text-shadow: 4px 4px 2px rgb(193, 150, 125) }
```

Border

The CSS property to change the border of an element to RGB 193, 150, 125 is called "border". The border property can be set on classes, ids or directly on the HTML element.

This example shows the color as border, it can be applied via the CSS property "border" or "border-color".

```
.border, #border, table{ border:4px solid rgb(193, 150, 125) }
```

If only the border color should be changed use the property `border-color`.

```
.border{ border-color:rgb(193, 150, 125) }
```

If you want to add a box shadow in that color use:

Here you see how a box with a 4 pixel `rgb(193, 150, 125)` colored shadow looks like.

```
.boxshadow{ -moz-box-shadow:4px 4px 4px  
4px rgb(193, 150, 125); -webkit-box-  
shadow:4px 4px 4px 4px rgb(193, 150, 125);  
box-shadow:4px 4px 4px 4px rgb(193, 150,  
125) }
```

Background

The CSS property to change the background color of an element to RGB 193, 150, 125 is called "background". The background property can be set on classes, ids or directly on the HTML element.

```
.background, #background, body{  
background: rgb(193, 150, 125) }
```

If only the background color should be changed can be used:

```
.background{ background-color: rgb(193,  
150, 125) }
```

This example shows the color as background, it is applied via the CSS property "background".

To optimize and compress your CSS code, you can use our [online CSS compressor and optimizer](#) based on csstidy. If you want to create a linear or radial gradient as background or border, check our [CSS Gradient Generator](#).

Hey! You found this booklet interesting? Support Converting Colors with the new Membership Option!

The pro membership hides all ads, plus gives you double the colors in the color bucket, and more awesome pro features!

[Learn more, Memberships starting at \\$2.50/m!](#)

**Follow me
on Twitter!**

@ConvertingColor