

Converting Colors

RGB(193, 158, 154)

Have a look what the booklet for
RGB(193, 158, 154) contains.

RGB(193, 158, 154)	3
<i>Conversions</i>	4
<i>Details</i>	6
<i>Harmonies</i>	11
<i>Previews</i>	23
<i>Color Blindness Simulation</i>	26
<i>CSS Examples</i>	29

Color

RGB(193, 158, 154)

Conversions

Conversions Part 1

Format	Color
Hex	C19E9A
RGB	193, 158, 154
RGB Percent	76%, 62%, 60%
CMY	0.2431, 0.3804, 0.3961
CMYK	0.00, 0.18, 0.20, 0.24
HSL	6°, 24%, 68%
HSV	6°, 20%, 76%
XYZ	40.0519, 38.1243, 35.8196
YIQ	168.0090, 22.1440, 6.1760

Conversions

Conversions Part 2

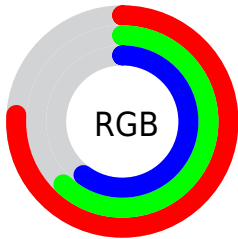
Format	Color
RYB	193, 158, 154
Decimal	12689050
CIELab	68.11, 12.30, 6.96
CIELCh	68, 14.134, 29.480
Yxy	38.1243, 0.3513, 0.3344
Android (android.graphics.Color)	4290879130 (0xFFC19E9A)
YUV	168.0090, -6.9064, 21.9171
Hunter-Lab	61.7449, 7.7338, 8.8259

Details

The RGB color **193, 158, 154** is a light color, and the websafe version is hex **CC9999**. A complement of this color would be **154, 189, 193**, and the grayscale version is **168, 168, 168**.

A 20% lighter version of the original color is **250, 213, 208**, and **139, 107, 103** is the 20% darker color. If you saturate the color by 10%, you get **193, 141, 135**, and if you desaturate by 10%, it is **193, 175, 173**.

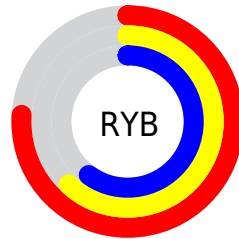
Distribution



Red (76%)

Green (62%)

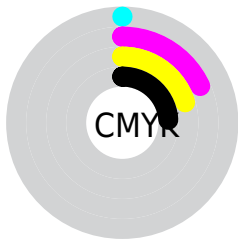
Blue (60%)



Red (76%)

Yellow (62%)

Blue (60%)

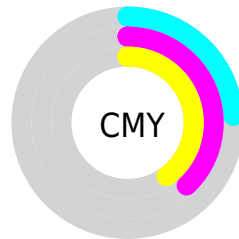


Cyan (0%)

Magenta (18%)

Yellow (20%)

Black (24%)



Cyan (24%)

Magenta (38%)

Yellow (40%)

Brightness & Saturation Gradients

These gradients show how the RGB color 193, 158, 154 changes by changing the brightness by 10 percent. The first figure shows a shift by +10% for each color and the second figure -10%.

Similar to the brightness gradients but the following saturation gradients show a change of the RGB color 193, 158, 154 by changing the saturation by 10% instead.

 193, 158, 154

255, 255, 255

 250, 213, 208

 255, 241, 237

 193, 158, 154


 166, 132, 128


 139, 107, 103

 113, 82, 79

 88, 59, 56

 64, 37, 35

 41, 17, 13

 11, 0, 0

 0, 0, 0

 193, 158, 154


 193, 158, 154

 193, 141, 135

 193, 175, 173

 193, 123, 115

 193, 193, 193

 193, 106, 96

 193, 210, 212

 193, 89, 77

 193, 227, 231

 193, 71, 57

 193, 245, 251

 193, 54, 38

 193, 255, 255

 193, 37, 19

 193, 20, 0

Harmonies

Analogous

The Analogous color harmony consists of three colors that are next to each other on the color wheel.



191, 157, 167



193, 158, 154



188, 161, 144

Triad

The Triadic color harmony groups three colors that are evenly spaced from another and form a triangle on the color wheel.



193, 158, 154



148, 172, 153



152, 167, 191

Complementary

The Complementary color scheme is a pair of colors which are on the opposite of each other on the color wheel.



193, 158, 154



154, 189, 193

Split Complementary

Split-complementary colors differ from the complementary color scheme. The scheme consists of three colors, the original color and two neighbors of the complement color.



139, 171, 188



193, 158, 154



137, 174, 165

Square

The Square scheme is like the rectangle color scheme, but the four colors are evenly spaced on the color wheel.



193, 158, 154



162, 169, 144



133, 173, 178



168, 163, 188

Rectangle

The Rectangle color scheme consists of four colors that form a rectangle on the color wheel.



193, 158, 154



181, 164, 141



133, 173, 178



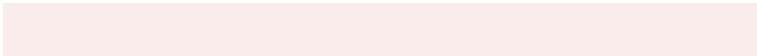
147, 168, 191

Sweetspot

The Sweet Spot groups the original color and five complimentary colors.



193, 158, 154



250, 236, 235



193, 154, 189



125, 117, 116



252, 252, 252



125, 125, 125

Same Dimension

The Same Dimension uses a secret algorithm to generate beautiful new colors.



193, 158, 154



250, 196, 190



193, 177, 154



97, 88, 87



161, 16, 0



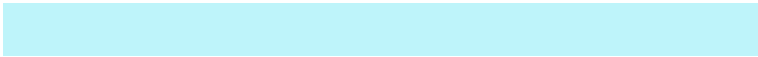
33, 3, 0

Inverse Universe

The Inverse Universe completely reimagines the original color for something new.



154, 189, 193



190, 244, 250



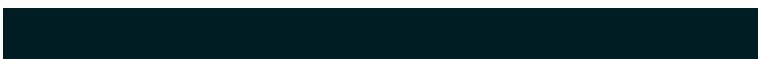
154, 170, 193



87, 96, 97



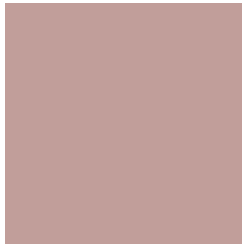
0, 144, 161



0, 30, 33

Previews

White Background



This preview shows how the RGB color 193, 158, 154 looks on a white background.

Color Contrast Check

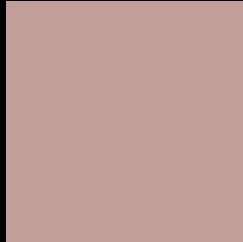
Large Text (above 18pt) WCAG AA × Fail

Any Text WCAG AA × Fail

Large Text (above 18pt) WCAG AAA × Fail

Any Text WCAG AAA × Fail

Black Background



This preview shows how the RGB color 193, 158, 154 looks on a black background.

Color Contrast Check

Large Text (above 18pt) WCAG AA ✓ Pass

Any Text WCAG AA ✓ Pass

Large Text (above 18pt) WCAG AAA ✓ Pass

Any Text WCAG AAA ✓ Pass

If you want to check with other color combinations, try the [Color Contrast Checker](#).

RGB 193, 158, 154 Background



This preview shows how black text looks on a background with the RGB color 193, 158, 154.



This preview shows how white text looks on a background with the RGB color 193, 158, 154.

Color Blindness Simulation

Color vision deficiency is a very complex topic, and I could not describe the different causes any better than Wikipedia does, so if you want to learn more, you should check out their [article about color blindness](#).

Dichromacy



Original Color
193, 158, 154

Protanopia
171, 166, 158

Deuteranopia
187, 160, 154



Tritanopia
195, 156, 168

Trichromacy



Original Color
193, 158, 154

Protanomaly
179, 163, 157

Deuteranomaly
189, 159, 154

Tritanomaly
194, 157, 163

Monochromacy



Original Color
193, 158, 154

Achromatopsia
168, 168, 168

Achromatomaly
177, 164, 163

CSS Examples

Text

The CSS property to change the color of the text to RGB 193, 158, 154 is called "color". The color property can be set on classes, ids or directly on the HTML element.

This example shows how text in the color `rgb(193, 158, 154)` looks like.

```
.text, #text, p{  
    color:rgb(193, 158, 154)  
}
```

If you want to add a text shadow in that color use the text-shadow property, you can generate a text shadow directly with our [CSS Text Shadow Generator](#).

Here you see how black text with a 4 pixel rgb(193, 158, 154) colored shadow looks like.

```
.shadow{ text-shadow: 4px 4px 2px rgb(193, 158, 154) }
```

Border

The CSS property to change the border of an element to RGB 193, 158, 154 is called "border". The border property can be set on classes, ids or directly on the HTML element.

This example shows the color as border, it can be applied via the CSS property "border" or "border-color".

```
.border, #border, table{ border:4px solid rgb(193, 158, 154) }
```

If only the border color should be changed use the property `border-color`.

```
.border{ border-color:rgb(193, 158, 154) }
```

If you want to add a box shadow in that color use:

Here you see how a box with a 4 pixel `rgb(193, 158, 154)` colored shadow looks like.

```
.boxshadow{ -moz-box-shadow:4px 4px 4px  
4px rgb(193, 158, 154); -webkit-box-  
shadow:4px 4px 4px 4px rgb(193, 158, 154);  
box-shadow:4px 4px 4px 4px rgb(193, 158,  
154) }
```

Background

The CSS property to change the background color of an element to RGB 193, 158, 154 is called "background". The background property can be set on classes, ids or directly on the HTML element.

```
.background, #background, body{  
background: rgb(193, 158, 154) }
```

If only the background color should be changed can be used:

```
.background{ background-color: rgb(193,  
158, 154) }
```

This example shows the color as background, it is applied via the CSS property "background".

To optimize and compress your CSS code, you can use our [online CSS compressor and optimizer](#) based on csstidy. If you want to create a linear or radial gradient as background or border, check our [CSS Gradient Generator](#).

Hey! You found this booklet interesting? Support Converting Colors with the new Membership Option!

The pro membership hides all ads, plus gives you double the colors in the color bucket, and more awesome pro features!

[Learn more, Memberships starting at \\$2.50/m!](#)

**Follow me
on Twitter!**

@ConvertingColor