

Converting Colors

RGB(194, 153, 154)

Have a look what the booklet for
RGB(194, 153, 154) contains.

RGB(194, 153, 154)	3
<i>Conversions</i>	4
<i>Details</i>	6
<i>Harmonies</i>	11
<i>Previews</i>	23
<i>Color Blindness Simulation</i>	26
<i>CSS Examples</i>	29

Color

RGB(194, 153, 154)

Conversions

Conversions Part 1

Format	Color
Hex	C2999A
RGB	194, 153, 154
RGB Percent	76%, 60%, 60%
CMY	0.2392, 0.4000, 0.3961
CMYK	0.00, 0.21, 0.21, 0.24
HSL	359°, 25%, 68%
HSV	359°, 21%, 76%
XYZ	39.4721, 36.5849, 35.5530
YIQ	165.3730, 24.1150, 9.0030

Conversions

Conversions Part 2

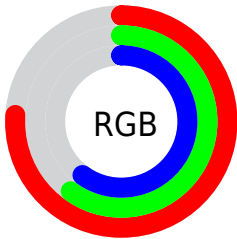
Format	Color
RYB	194, 153, 154
Decimal	12753306
CIELab	66.96, 15.43, 5.32
CIElCh	67, 16.325, 19.021
Yxy	36.5849, 0.3537, 0.3278
Android (android.graphics.Color)	4290943386 (0xFFC2999A)
YUV	165.3730, -5.6069, 25.1059
Hunter-Lab	60.4854, 10.6375, 7.4895

Details

The RGB color **194, 153, 154** is a light color, and the websafe version is hex **CC9999**. A complement of this color would be **153, 194, 193**, and the grayscale version is **165, 165, 165**.

A 20% lighter version of the original color is **251, 207, 208**, and **140, 102, 103** is the 20% darker color. If you saturate the color by 10%, you get **194, 134, 135**, and if you desaturate by 10%, it is **194, 172, 173**.

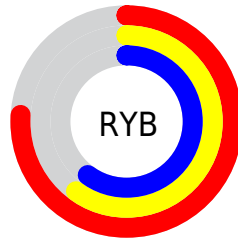
Distribution



Red (76%)

Green (60%)

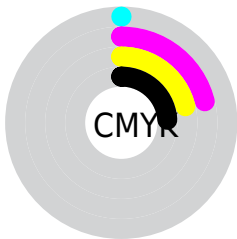
Blue (60%)



Red (76%)

Yellow (60%)

Blue (60%)

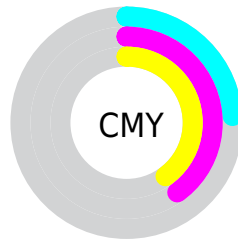


Cyan (0%)

Magenta (21%)

Yellow (21%)

Black (24%)



Cyan (24%)


Magenta (40%)

Yellow (40%)

Brightness & Saturation Gradients

These gradients show how the RGB color 194, 153, 154 changes by changing the brightness by 10 percent. The first figure shows a shift by +10% for each color and the second figure -10%.


Similar to the brightness gradients but the following saturation gradients show a change of the RGB color 194, 153, 154 by changing the saturation by 10% instead.

 194, 153, 154


255, 255, 255


 251, 207, 208

 255, 236, 237

 194, 153, 154


 166, 127, 128

 140, 102, 103

 114, 78, 79


 89, 55, 56


 64, 33, 35


 42, 12, 13

 6, 0, 0


 0, 0, 0

 194, 153, 154

 194, 153, 154

 194, 134, 135

 194, 172, 173

 194, 114, 116

 194, 192, 192

 194, 95, 97

 194, 211, 211

 194, 75, 78

 194, 231, 230

 194, 56, 59

 194, 250, 249

 194, 37, 40

 194, 255, 255

 194, 17, 22

 194, 0, 5

Harmonies

Analogous

The Analogous color harmony consists of three colors that are next to each other on the color wheel.



189, 153, 169



194, 153, 154



190, 156, 141

Triad

The Triadic color harmony groups three colors that are evenly spaced from another and form a triangle on the color wheel.



194, 153, 154



148, 169, 143



140, 166, 191

Complementary

The Complementary color scheme is a pair of colors which are on the opposite of each other on the color wheel.



194, 153, 154



153, 194, 193

Split Complementary

Split-complementary colors differ from the complementary color scheme. The scheme consists of three colors, the original color and two neighbors of the complement color.



127, 170, 185



194, 153, 154



133, 171, 157

Square

The Square scheme is like the rectangle color scheme, but the four colors are evenly spaced on the color wheel.



194, 153, 154



165, 165, 135



124, 171, 172



159, 161, 191

Rectangle

The Rectangle color scheme consists of four colors that form a rectangle on the color wheel.



194, 153, 154



184, 159, 136



124, 171, 172



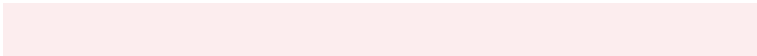
135, 167, 190

Sweetspot

The Sweet Spot groups the original color and five complimentary colors.



194, 153, 154



252, 237, 238



193, 153, 194



128, 119, 119



0, 0, 0



128, 128, 128

Same Dimension

The Same Dimension uses a secret algorithm to generate beautiful new colors.



194, 153, 154



252, 189, 191



194, 172, 153



97, 87, 87



161, 0, 4



33, 0, 1

Inverse Universe

The Inverse Universe completely reimagines the original color for something new.



194, 153, 154



252, 189, 191



153, 175, 194



97, 87, 87



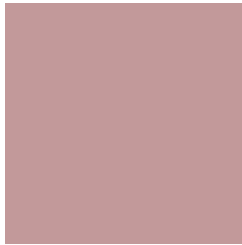
161, 0, 4



33, 0, 1

Previews

White Background



This preview shows how the RGB color 194, 153, 154 looks on a white background.

Color Contrast Check

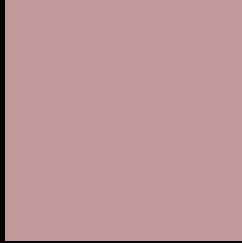
Large Text (above 18pt) WCAG AA × Fail

Any Text WCAG AA × Fail

Large Text (above 18pt) WCAG AAA × Fail

Any Text WCAG AAA × Fail

Black Background



This preview shows how the RGB color 194, 153, 154 looks on a black background.

Color Contrast Check

Large Text (above 18pt) WCAG AA ✓ Pass

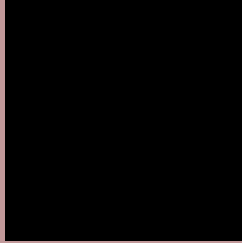
Any Text WCAG AA ✓ Pass

Large Text (above 18pt) WCAG AAA ✓ Pass

Any Text WCAG AAA ✓ Pass

If you want to check with other color combinations, try the [Color Contrast Checker](#).

RGB 194, 153, 154 Background



This preview shows how black text looks on a background with the RGB color 194, 153, 154.




This preview shows how white text looks on a background with the RGB color 194, 153, 154.

Color Blindness Simulation

Color vision deficiency is a very complex topic, and I could not describe the different causes any better than Wikipedia does, so if you want to learn more, you should check out their [article about color blindness](#).

Dichromacy





Tritanopia
195, 152, 163

Trichromacy



Original Color

194, 153, 154

Protanomaly

177, 159, 157

Deuteranomaly

187, 156, 153

Tritanomaly

195, 152, 160

Monochromacy



Original Color

194, 153, 154

Achromatopsia

165, 165, 165

Achromatomaly

176, 161, 161

CSS Examples

Text

The CSS property to change the color of the text to RGB 194, 153, 154 is called "color". The color property can be set on classes, ids or directly on the HTML element.

This example shows how text in the color `rgb(194, 153, 154)` looks like.

```
.text, #text, p{  
    color:rgb(194, 153, 154)  
}
```

If you want to add a text shadow in that color use the text-shadow property, you can generate a text shadow directly with our [CSS Text Shadow Generator](#).

Here you see how black text with a 4 pixel rgb(194, 153, 154) colored shadow looks like.

```
.shadow{ text-shadow: 4px 4px 2px rgb(194, 153, 154) }
```

Border

The CSS property to change the border of an element to RGB 194, 153, 154 is called "border". The border property can be set on classes, ids or directly on the HTML element.

This example shows the color as border, it can be applied via the CSS property "border" or "border-color".

```
.border, #border, table{ border:4px solid rgb(194, 153, 154) }
```

If only the border color should be changed use the property `border-color`.

```
.border{ border-color:rgb(194, 153, 154) }
```

If you want to add a box shadow in that color use:

Here you see how a box with a 4 pixel `rgb(194, 153, 154)` colored shadow looks like.

```
.boxshadow{ -moz-box-shadow:4px 4px 4px  
4px rgb(194, 153, 154); -webkit-box-  
shadow:4px 4px 4px 4px rgb(194, 153, 154);  
box-shadow:4px 4px 4px 4px rgb(194, 153,  
154) }
```

Background

The CSS property to change the background color of an element to RGB 194, 153, 154 is called "background". The background property can be set on classes, ids or directly on the HTML element.

```
.background, #background, body{  
background: rgb(194, 153, 154) }
```

If only the background color should be changed can be used:

```
.background{ background-color: rgb(194,  
153, 154) }
```

This example shows the color as background, it is applied via the CSS property "background".

To optimize and compress your CSS code, you can use our [online CSS compressor and optimizer](#) based on csstidy. If you want to create a linear or radial gradient as background or border, check our [CSS Gradient Generator](#).

Hey! You found this booklet interesting? Support Converting Colors with the new Membership Option!

The pro membership hides all ads, plus gives you double the colors in the color bucket, and more awesome pro features!

[Learn more, Memberships starting at \\$2.50/m!](#)

**Follow me
on Twitter!**

@ConvertingColor