

Converting Colors

RGB(195, 135, 126)

Have a look what the booklet for
RGB(195, 135, 126) contains.

RGB(195, 135, 126)	3
<i>Conversions</i>	4
<i>Details</i>	6
<i>Harmonies</i>	11
<i>Previews</i>	23
<i>Color Blindness Simulation</i>	26
<i>CSS Examples</i>	29

Color

RGB(195, 135, 126)

Conversions

Conversions Part 1

Format	Color
Hex	C3877E
RGB	195, 135, 126
RGB Percent	76%, 53%, 49%
CMY	0.2353, 0.4706, 0.5059
CMYK	0.00, 0.31, 0.35, 0.24
HSL	8°, 37%, 63%
HSV	8°, 35%, 76%
XYZ	34.9355, 30.4364, 23.7722
YIQ	151.9140, 38.6490, 9.9210

Conversions

Conversions Part 2

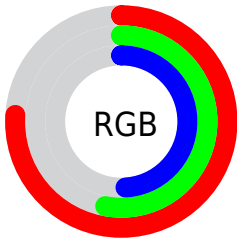
Format	Color
RYB	195, 136, 126
Decimal	12814206
CIELab	62.03, 21.83, 14.10
CIELCh	62, 25.990, 32.864
Yxy	30.4364, 0.3919, 0.3414
Android (android.graphics.Color)	4291004286 (0xFFC3877E)
YUV	151.9140, -12.7756, 37.7864
Hunter-Lab	55.1692, 16.4879, 13.0706

Details

The RGB color **195, 135, 126** is a light color, and the websafe version is hex **CC9999**. A complement of this color would be **126, 186, 195**, and the grayscale version is **152, 152, 152**.

A 20% lighter version of the original color is **253, 189, 179**, and **139, 85, 77** is the 20% darker color. If you saturate the color by 10%, you get **195, 118, 107**, and if you desaturate by 10%, it is **195, 152, 146**.

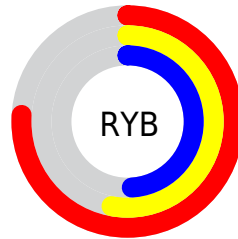
Distribution



Red (76%)

Green (53%)

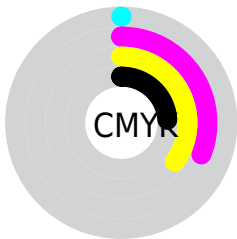
Blue (49%)



Red (76%)

Yellow (53%)

Blue (49%)

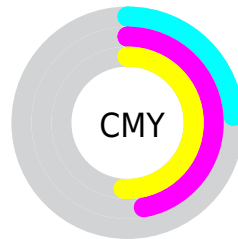


Cyan (0%)

Magenta (31%)

Yellow (35%)

Black (24%)



Cyan (24%)

Magenta (47%)

Yellow (51%)

Brightness & Saturation Gradients

These gradients show how the RGB color 195, 135, 126 changes by changing the brightness by 10 percent. The first figure shows a shift by +10% for each color and the second figure -10%.

Similar to the brightness gradients but the following saturation gradients show a change of the RGB color 195, 135, 126 by changing the saturation by 10% instead.

 195, 135, 126


255, 255, 255

 253, 189, 179

 255, 217, 206

 255, 245, 234

 195, 135, 126

 167, 109, 101

 139, 85, 77

 113, 61, 54

 87, 38, 33

 62, 16, 11


 39, 0, 0


 0, 0, 0

 195, 135, 126

 195, 118, 107

 195, 135, 126

 195, 152, 146

 195, 101, 87

 195, 169, 165

 195, 84, 68

 195, 186, 185

 195, 67, 48

 195, 203, 204

 195, 50, 29

 195, 220, 224

 195, 33, 9

 195, 237, 243

 195, 25, 0

 195, 254, 255

 195, 255, 255

Harmonies

Analogous

The Analogous color harmony consists of three colors that are next to each other on the color wheel.



195, 133, 148



195, 135, 126



184, 141, 110

Triad

The Triadic color harmony groups three colors that are evenly spaced from another and form a triangle on the color wheel.



195, 135, 126



113, 161, 128



124, 151, 196

Complementary

The Complementary color scheme is a pair of colors which are on the opposite of each other on the color wheel.



195, 135, 126



126, 186, 195

Split Complementary

Split-complementary colors differ from the complementary color scheme. The scheme consists of three colors, the original color and two neighbors of the complement color.



92, 158, 190



195, 135, 126



89, 163, 151

Square

The Square scheme is like the rectangle color scheme, but the four colors are evenly spaced on the color wheel.



195, 135, 126



139, 156, 111



78, 162, 174



156, 143, 189

Rectangle

The Rectangle color scheme consists of four colors that form a rectangle on the color wheel.



195, 135, 126



171, 147, 104



78, 162, 174



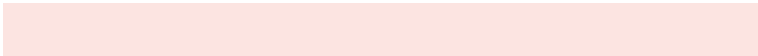
112, 154, 195

Sweetspot

The Sweet Spot groups the original color and five complimentary colors.



195, 135, 126



252, 228, 225



195, 126, 187



128, 113, 111



0, 0, 0



128, 128, 128

Same Dimension

The Same Dimension uses a secret algorithm to generate beautiful new colors.



195, 135, 126



252, 160, 146



195, 169, 126



97, 88, 87



161, 21, 0



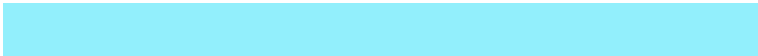
33, 4, 0

Inverse Universe

The Inverse Universe completely reimagines the original color for something new.



126, 186, 195



146, 239, 252



126, 152, 195



87, 96, 97



0, 140, 161



0, 29, 33

Previews

White Background



This preview shows how the RGB color 195, 135, 126 looks on a white background.

Color Contrast Check

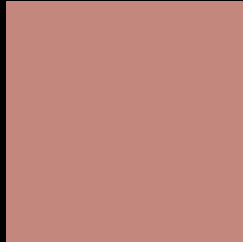
Large Text (above 18pt) WCAG AA × Fail

Any Text WCAG AA × Fail

Large Text (above 18pt) WCAG AAA × Fail

Any Text WCAG AAA × Fail

Black Background



This preview shows how the RGB color 195, 135, 126 looks on a black background.

Color Contrast Check

Large Text (above 18pt) WCAG AA ✓ Pass

Any Text WCAG AA ✓ Pass

Large Text (above 18pt) WCAG AAA ✓ Pass

Any Text WCAG AAA ✓ Pass

If you want to check with other color combinations, try the [Color Contrast Checker](#).

RGB 195, 135, 126 Background



This preview shows how black text looks on a background with the RGB color 195, 135, 126.



This preview shows how white text looks on a background with the RGB color 195, 135, 126.

Color Blindness Simulation

Color vision deficiency is a very complex topic, and I could not describe the different causes any better than Wikipedia does, so if you want to learn more, you should check out their [article about color blindness](#).

Dichromacy





Tritanopia
197, 133, 143

Trichromacy



Original Color
195, 135, 126

Protanomaly
171, 145, 130

Deuteranomaly
182, 141, 125

Tritanomaly
196, 134, 137

Monochromacy



Original Color
195, 135, 126

Achromatopsia
152, 152, 152

Achromatomaly
168, 146, 143

CSS Examples

Text

The CSS property to change the color of the text to RGB 195, 135, 126 is called "color". The color property can be set on classes, ids or directly on the HTML element.

This example shows how text in the color `rgb(195, 135, 126)` looks like.

```
.text, #text, p{  
    color:rgb(195, 135, 126)  
}
```

If you want to add a text shadow in that color use the text-shadow property, you can generate a text shadow directly with our [CSS Text Shadow Generator](#).

Here you see how black text with a 4 pixel rgb(195, 135, 126) colored shadow looks like.

```
.shadow{ text-shadow: 4px 4px 2px rgb(195, 135, 126) }
```

Border

The CSS property to change the border of an element to RGB 195, 135, 126 is called "border". The border property can be set on classes, ids or directly on the HTML element.

This example shows the color as border, it can be applied via the CSS property "border" or "border-color".

```
.border, #border, table{ border:4px solid rgb(195, 135, 126) }
```

If only the border color should be changed use the property `border-color`.

```
.border{ border-color:rgb(195, 135, 126) }
```

If you want to add a box shadow in that color use:

Here you see how a box with a 4 pixel `rgb(195, 135, 126)` colored shadow looks like.

```
.boxshadow{ -moz-box-shadow:4px 4px 4px  
4px rgb(195, 135, 126); -webkit-box-  
shadow:4px 4px 4px 4px rgb(195, 135, 126);  
box-shadow:4px 4px 4px 4px rgb(195, 135,  
126) }
```

Background

The CSS property to change the background color of an element to RGB 195, 135, 126 is called "background". The background property can be set on classes, ids or directly on the HTML element.

```
.background, #background, body{  
background: rgb(195, 135, 126) }
```

If only the background color should be changed can be used:

```
.background{ background-color: rgb(195,  
135, 126) }
```

This example shows the color as background, it is applied via the CSS property "background".

To optimize and compress your CSS code, you can use our [online CSS compressor and optimizer](#) based on csstidy. If you want to create a linear or radial gradient as background or border, check our [CSS Gradient Generator](#).

Hey! You found this booklet interesting? Support Converting Colors with the new Membership Option!

The pro membership hides all ads, plus gives you double the colors in the color bucket, and more awesome pro features!

[Learn more, Memberships starting at \\$2.50/m!](#)

**Follow me
on Twitter!**

@ConvertingColor