

Converting Colors

RGB(195, 144, 122)

Have a look what the booklet for
RGB(195, 144, 122) contains.

RGB(195, 144, 122)	3
<i>Conversions</i>	4
<i>Details</i>	6
<i>Harmonies</i>	11
<i>Previews</i>	23
<i>Color Blindness Simulation</i>	26
<i>CSS Examples</i>	29

Color

RGB(195, 144, 122)

Conversions

Conversions Part 1

Format	Color
Hex	C3907A
RGB	195, 144, 122
RGB Percent	76%, 56%, 48%
CMY	0.2353, 0.4353, 0.5216
CMYK	0.00, 0.26, 0.37, 0.24
HSL	18°, 38%, 62%
HSV	18°, 37%, 76%
XYZ	35.9918, 32.9538, 22.8761
YIQ	156.7410, 37.4580, 3.9700

Conversions

Conversions Part 2

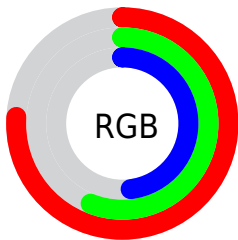
Format	Color
RYB	195, 153, 122
Decimal	12816506
CIELab	64.12, 16.38, 19.25
CIELCh	64, 25.271, 49.607
Yxy	32.9538, 0.3920, 0.3589
Android (android.graphics.Color)	4291006586 (0xFFC3907A)
YUV	156.7410, -17.1273, 33.5531
Hunter-Lab	57.4054, 11.4558, 16.5566

Details

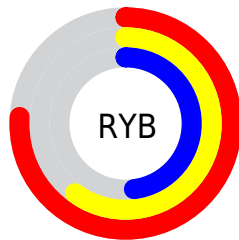
The RGB color **195, 144, 122** is a light color, and the websafe version is hex **CC9999**. A complement of this color would be **122, 173, 195**, and the grayscale version is **157, 157, 157**.

A 20% lighter version of the original color is **253, 198, 175**, and **140, 93, 73** is the 20% darker color. If you saturate the color by 10%, you get **195, 130, 103**, and if you desaturate by 10%, it is **195, 158, 142**.

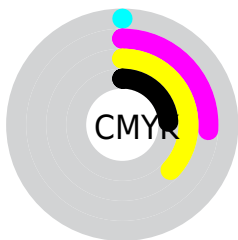
Distribution



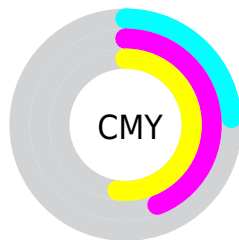
- Red (76%)
- Green (56%)
- Blue (48%)



- Red (76%)
- Yellow (60%)
- Blue (48%)



- Cyan (0%)
- Magenta (26%)
- Yellow (37%)
- Black (24%)




- Cyan (24%)
- Magenta (44%)
- Yellow (52%)

Brightness & Saturation Gradients

These gradients show how the RGB color 195, 144, 122 changes by changing the brightness by 10 percent. The first figure shows a shift by +10% for each color and the second figure -10%.

Similar to the brightness gradients but the following saturation gradients show a change of the RGB color 195, 144, 122 by changing the saturation by 10% instead.

 195, 144, 122

255, 255, 255

 253, 198, 175

 255, 226, 202

 255, 255, 230

 195, 144, 122

 167, 118, 97

 140, 93, 73

 113, 70, 50

 87, 47, 29

 62, 25, 5

 39, 2, 0

 0, 0, 0

 195, 144, 122

 195, 130, 103

 195, 144, 122

 195, 158, 142

195, 117, 83

195, 171, 161

195, 103, 64

195, 185, 181

195, 90, 44

195, 198, 200

195, 76, 24

195, 212, 219

195, 62, 5

195, 226, 239

195, 59, 0

195, 239, 255

195, 253, 255

195, 255, 255

Harmonies

Analogous

The Analogous color harmony consists of three colors that are next to each other on the color wheel.



201, 139, 141



195, 144, 122



179, 151, 111

Triad

The Triadic color harmony groups three colors that are evenly spaced from another and form a triangle on the color wheel.



195, 144, 122



106, 168, 147



148, 152, 198

Complementary

The Complementary color scheme is a pair of colors which are on the opposite of each other on the color wheel.



195, 144, 122



122, 173, 195

Split Complementary

Split-complementary colors differ from the complementary color scheme. The scheme consists of three colors, the original color and two neighbors of the complement color.



116, 160, 199



195, 144, 122



89, 168, 170

Square

The Square scheme is like the rectangle color scheme, but the four colors are evenly spaced on the color wheel.



195, 144, 122



131, 164, 126



92, 165, 189



177, 145, 185

Rectangle

The Rectangle color scheme consists of four colors that form a rectangle on the color wheel.



195, 144, 122



164, 156, 111



92, 165, 189



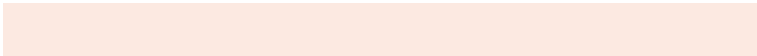
137, 155, 200

Sweetspot

The Sweet Spot groups the original color and five complimentary colors.



195, 144, 122



252, 233, 225



195, 122, 173



128, 116, 111



0, 0, 0



128, 128, 128

Same Dimension

The Same Dimension uses a secret algorithm to generate beautiful new colors.



195, 144, 122



252, 173, 139



195, 180, 122



97, 90, 87



161, 48, 0



33, 10, 0

Inverse Universe

The Inverse Universe completely reimagines the original color for something new.



122, 173, 195



139, 218, 252



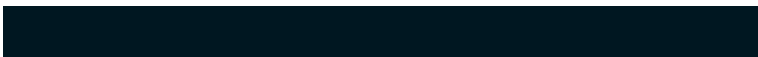
122, 137, 195



87, 94, 97



0, 112, 161



0, 23, 33

Previews

White Background



This preview shows how the RGB color 195, 144, 122 looks on a white background.

Color Contrast Check

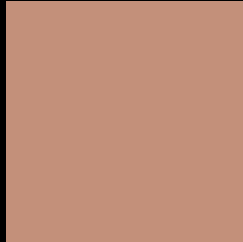
Large Text (above 18pt) WCAG AA × Fail

Any Text WCAG AA × Fail

Large Text (above 18pt) WCAG AAA × Fail

Any Text WCAG AAA × Fail

Black Background



This preview shows how the RGB color 195, 144, 122 looks on a black background.

Color Contrast Check

Large Text (above 18pt) WCAG AA ✓ Pass

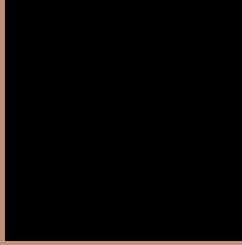
Any Text WCAG AA ✓ Pass

Large Text (above 18pt) WCAG AAA ✓ Pass

Any Text WCAG AAA ✓ Pass

If you want to check with other color combinations, try the [Color Contrast Checker](#).

RGB 195, 144, 122 Background



This preview shows how black text looks on a background with the RGB color 195, 144, 122.



This preview shows how white text looks on a background with the RGB color 195, 144, 122.

Color Blindness Simulation

Color vision deficiency is a very complex topic, and I could not describe the different causes any better than Wikipedia does, so if you want to learn more, you should check out their [article about color blindness](#).

Dichromacy



Original Color
195, 144, 122

Protanopia
165, 155, 127

Deuteranopia
182, 149, 121



Tritanopia
198, 140, 151

Trichromacy



Original Color

195, 144, 122

Protanomaly

176, 151, 125

Deuteranomaly

187, 147, 121

Tritanomaly

197, 141, 140

Monochromacy



Original Color

195, 144, 122

Achromatopsia

157, 157, 157

Achromatomaly

171, 152, 144

CSS Examples

Text

The CSS property to change the color of the text to RGB 195, 144, 122 is called "color". The color property can be set on classes, ids or directly on the HTML element.

This example shows how text in the color `rgb(195, 144, 122)` looks like.

```
.text, #text, p{  
    color:rgb(195, 144, 122)  
}
```

If you want to add a text shadow in that color use the text-shadow property, you can generate a text shadow directly with our [CSS Text Shadow Generator](#).

Here you see how black text with a 4 pixel rgb(195, 144, 122) colored shadow looks like.

```
.shadow{ text-shadow: 4px 4px 2px rgb(195, 144, 122) }
```

Border

The CSS property to change the border of an element to RGB 195, 144, 122 is called "border". The border property can be set on classes, ids or directly on the HTML element.

This example shows the color as border, it can be applied via the CSS property "border" or "border-color".

```
.border, #border, table{ border:4px solid rgb(195, 144, 122) }
```

If only the border color should be changed use the property `border-color`.

```
.border{ border-color:rgb(195, 144, 122) }
```

If you want to add a box shadow in that color use:

Here you see how a box with a 4 pixel `rgb(195, 144, 122)` colored shadow looks like.

```
.boxshadow{ -moz-box-shadow:4px 4px 4px  
4px rgb(195, 144, 122); -webkit-box-  
shadow:4px 4px 4px 4px rgb(195, 144, 122);  
box-shadow:4px 4px 4px 4px rgb(195, 144,  
122) }
```

Background

The CSS property to change the background color of an element to RGB 195, 144, 122 is called "background". The background property can be set on classes, ids or directly on the HTML element.

```
.background, #background, body{  
background: rgb(195, 144, 122) }
```

If only the background color should be changed can be used:

```
.background{ background-color: rgb(195,  
144, 122) }
```

This example shows the color as background, it is applied via the CSS property "background".

To optimize and compress your CSS code, you can use our [online CSS compressor and optimizer](#) based on csstidy. If you want to create a linear or radial gradient as background or border, check our [CSS Gradient Generator](#).

Hey! You found this booklet interesting? Support Converting Colors with the new Membership Option!

The pro membership hides all ads, plus gives you double the colors in the color bucket, and more awesome pro features!

[Learn more, Memberships starting at \\$2.50/m!](#)

**Follow me
on Twitter!**

@ConvertingColor