

Converting Colors

RGB(195, 149, 149)

Have a look what the booklet for
RGB(195, 149, 149) contains.

RGB(195, 149, 149)	3
<i>Conversions</i>	4
<i>Details</i>	6
<i>Harmonies</i>	11
<i>Previews</i>	23
<i>Color Blindness Simulation</i>	26
<i>CSS Examples</i>	29

Color

RGB(195, 149, 149)

Conversions

Conversions Part 1

Format	Color
Hex	C39595
RGB	195, 149, 149
RGB Percent	76%, 58%, 58%
CMY	0.2353, 0.4157, 0.4157
CMYK	0.00, 0.24, 0.24, 0.24
HSL	0°, 28%, 67%
HSV	0°, 24%, 76%
XYZ	38.6779, 35.2669, 33.2024
YIQ	162.7540, 27.4160, 9.7520

Conversions

Conversions Part 2

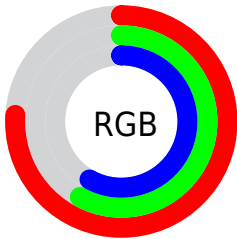
Format	Color
RYB	195, 149, 149
Decimal	12817813
CIELab	65.96, 17.26, 6.69
CIELCh	66, 18.511, 21.174
Yxy	35.2669, 0.3610, 0.3291
Android (android.graphics.Color)	4291007893 (0xFFC39595)
YUV	162.7540, -6.7807, 28.2797
Hunter-Lab	59.3860, 12.3312, 8.4214

Details

The RGB color **195, 149, 149** is a light color, and the websafe version is hex **CC9999**. A complement of this color would be **149, 195, 195**, and the grayscale version is **163, 163, 163**.

A 20% lighter version of the original color is **252, 203, 203**, and **140, 98, 98** is the 20% darker color. If you saturate the color by 10%, you get **195, 130, 130**, and if you desaturate by 10%, it is **195, 169, 169**.

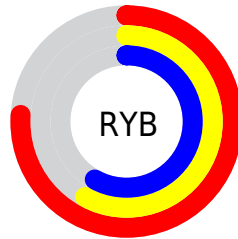
Distribution



Red (76%)

Green (58%)

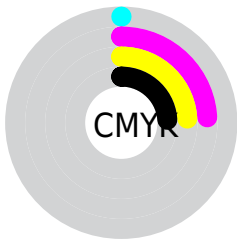
Blue (58%)



Red (76%)

Yellow (58%)

Blue (58%)

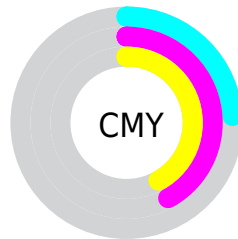


Cyan (0%)

Magenta (24%)

Yellow (24%)

Black (24%)



Cyan (24%)

Magenta (42%)

Yellow (42%)

Brightness & Saturation Gradients

These gradients show how the RGB color 195, 149, 149 changes by changing the brightness by 10 percent. The first figure shows a shift by +10% for each color and the second figure -10%.

Similar to the brightness gradients but the following saturation gradients show a change of the RGB color 195, 149, 149 by changing the saturation by 10% instead.


 195, 149, 149

255, 255, 255

 252, 203, 203


 255, 231, 231

 195, 149, 149

 167, 123, 123

 140, 98, 98

 114, 74, 75

 89, 51, 52

 64, 29, 31

 42, 7, 6

 0, 0, 0

 195, 149, 149

 195, 130, 130

 195, 149, 149

 195, 169, 169

 195, 110, 110

 195, 188, 188

 195, 91, 91

 195, 207, 207

 195, 71, 71

 195, 227, 227

 195, 52, 52

 195, 247, 247

 195, 32, 32

 195, 255, 255

 195, 13, 13

 195, 0, 0

Harmonies

Analogous

The Analogous color harmony consists of three colors that are next to each other on the color wheel.



191, 149, 166



195, 149, 149



190, 152, 135

Triad

The Triadic color harmony groups three colors that are evenly spaced from another and form a triangle on the color wheel.



195, 149, 149



141, 167, 139



135, 163, 193

Complementary

The Complementary color scheme is a pair of colors which are on the opposite of each other on the color wheel.



195, 149, 149



149, 195, 195

Split Complementary

Split-complementary colors differ from the complementary color scheme. The scheme consists of three colors, the original color and two neighbors of the complement color.



119, 168, 186



195, 149, 149



125, 170, 155

Square

The Square scheme is like the rectangle color scheme, but the four colors are evenly spaced on the color wheel.



195, 149, 149



161, 163, 129



115, 170, 172



157, 158, 191

Rectangle

The Rectangle color scheme consists of four colors that form a rectangle on the color wheel.



195, 149, 149



183, 156, 129



115, 170, 172



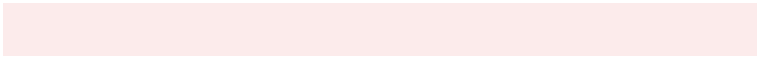
129, 165, 191

Sweetspot

The Sweet Spot groups the original color and five complimentary colors.



195, 149, 149



252, 235, 235



195, 149, 195



128, 117, 117



0, 0, 0



128, 128, 128

Same Dimension

The Same Dimension uses a secret algorithm to generate beautiful new colors.



195, 149, 149



252, 182, 182



195, 172, 149



97, 87, 87



161, 0, 0



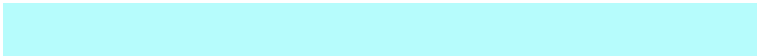
33, 0, 0

Inverse Universe

The Inverse Universe completely reimagines the original color for something new.



149, 195, 195



182, 252, 252



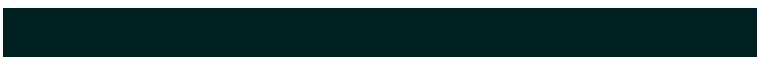
149, 172, 195



87, 97, 97



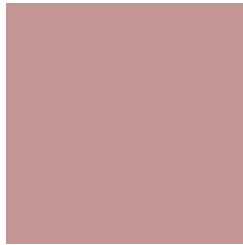
0, 161, 161



0, 33, 33

Previews

White Background



This preview shows how the RGB color 195, 149, 149 looks on a white background.

Color Contrast Check

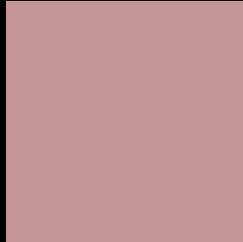
Large Text (above 18pt) WCAG AA × Fail

Any Text WCAG AA × Fail

Large Text (above 18pt) WCAG AAA × Fail

Any Text WCAG AAA × Fail

Black Background



This preview shows how the RGB color 195, 149, 149 looks on a black background.

Color Contrast Check

Large Text (above 18pt) WCAG AA ✓ Pass

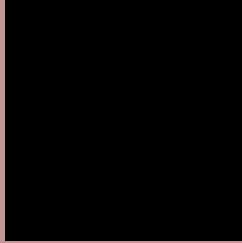
Any Text WCAG AA ✓ Pass

Large Text (above 18pt) WCAG AAA ✓ Pass

Any Text WCAG AAA ✓ Pass

If you want to check with other color combinations, try the [Color Contrast Checker](#).

RGB 195, 149, 149 Background



This preview shows how black text looks on a background with the RGB color 195, 149, 149.



This preview shows how white text looks on a background with the RGB color 195, 149, 149.

Color Blindness Simulation

Color vision deficiency is a very complex topic, and I could not describe the different causes any better than Wikipedia does, so if you want to learn more, you should check out their [article about color blindness](#).

Dichromacy



Original Color
195, 149, 149

Protanopia
165, 160, 155

Deuteranopia
181, 155, 148



Tritanopia
196, 147, 159

Trichromacy



Original Color

195, 149, 149

Protanomaly

176, 156, 153

Deuteranomaly

186, 153, 148

Tritanomaly

196, 148, 155

Monochromacy



Original Color

195, 149, 149

Achromatopsia

163, 163, 163

Achromatomaly

175, 158, 158

CSS Examples

Text

The CSS property to change the color of the text to RGB 195, 149, 149 is called "color". The color property can be set on classes, ids or directly on the HTML element.

This example shows how text in the color `rgb(195, 149, 149)` looks like.

```
.text, #text, p{  
    color:rgb(195, 149, 149)  
}
```

If you want to add a text shadow in that color use the text-shadow property, you can generate a text shadow directly with our [CSS Text Shadow Generator](#).

Here you see how black text with a 4 pixel rgb(195, 149, 149) colored shadow looks like.

```
.shadow{ text-shadow: 4px 4px 2px rgb(195, 149, 149) }
```

Border

The CSS property to change the border of an element to RGB 195, 149, 149 is called "border". The border property can be set on classes, ids or directly on the HTML element.

This example shows the color as border, it can be applied via the CSS property "border" or "border-color".

```
.border, #border, table{ border:4px solid rgb(195, 149, 149) }
```

If only the border color should be changed use the property `border-color`.

```
.border{ border-color:rgb(195, 149, 149) }
```

If you want to add a box shadow in that color use:

Here you see how a box with a 4 pixel `rgb(195, 149, 149)` colored shadow looks like.

```
.boxshadow{ -moz-box-shadow:4px 4px 4px  
4px rgb(195, 149, 149); -webkit-box-  
shadow:4px 4px 4px 4px rgb(195, 149, 149);  
box-shadow:4px 4px 4px 4px rgb(195, 149,  
149) }
```

Background

The CSS property to change the background color of an element to RGB 195, 149, 149 is called "background". The background property can be set on classes, ids or directly on the HTML element.

```
.background, #background, body{  
background: rgb(195, 149, 149) }
```

If only the background color should be changed can be used:

```
.background{ background-color: rgb(195,  
149, 149) }
```

This example shows the color as background, it is applied via the CSS property "background".

To optimize and compress your CSS code, you can use our [online CSS compressor and optimizer](#) based on csstidy. If you want to create a linear or radial gradient as background or border, check our [CSS Gradient Generator](#).

Hey! You found this booklet interesting? Support Converting Colors with the new Membership Option!

The pro membership hides all ads, plus gives you double the colors in the color bucket, and more awesome pro features!

[Learn more, Memberships starting at \\$2.50/m!](#)

**Follow me
on Twitter!**

@ConvertingColor