

Converting Colors

RGB(195, 169, 170)

Have a look what the booklet for
RGB(195, 169, 170) contains.

RGB(195, 169, 170)	3
<i>Conversions</i>	4
<i>Details</i>	6
<i>Harmonies</i>	11
<i>Previews</i>	23
<i>Color Blindness Simulation</i>	26
<i>CSS Examples</i>	29

Color

RGB(195, 169, 170)

Conversions

Conversions Part 1

Format	Color
Hex	C3A9AA
RGB	195, 169, 170
RGB Percent	76%, 66%, 67%
CMY	0.2353, 0.3373, 0.3333
CMYK	0.00, 0.13, 0.13, 0.24
HSL	358°, 18%, 71%
HSV	358°, 13%, 76%
XYZ	43.9493, 42.8803, 43.9906
YIQ	176.8880, 15.1750, 5.8230

Conversions

Conversions Part 2

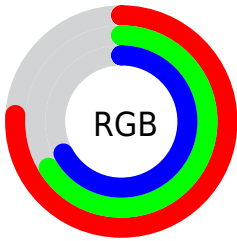
Format	Color
RYB	195, 169, 170
Decimal	12822954
CIELab	71.47, 9.60, 2.96
CIElCh	71, 10.047, 17.158
Yxy	42.8803, 0.3360, 0.3278
Android (android.graphics.Color)	4291013034 (0xFFC3A9AA)
YUV	176.8880, -3.3958, 15.8842
Hunter-Lab	65.4831, 5.2060, 6.0080

Details

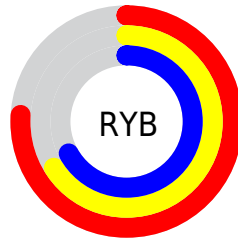
The RGB color **195, 169, 170** is a light color, and the websafe version is hex **CC9999**. A complement of this color would be **169, 195, 194**, and the grayscale version is **177, 177, 177**.

A 20% lighter version of the original color is **252, 224, 225**, and **141, 117, 118** is the 20% darker color. If you saturate the color by 10%, you get **195, 150, 151**, and if you desaturate by 10%, it is **195, 188, 189**.

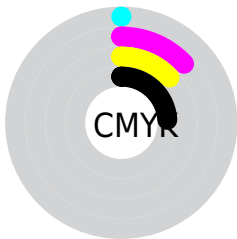
Distribution



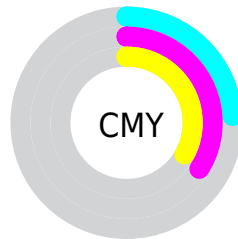
- Red (76%)
- Green (66%)
- Blue (67%)



- Red (76%)
- Yellow (66%)
- Blue (67%)



- Cyan (0%)
- Magenta (13%)
- Yellow (13%)
- Black (24%)



- Cyan (24%)
- Magenta (34%)
- Yellow (33%)

Brightness & Saturation Gradients

These gradients show how the RGB color 195, 169, 170 changes by changing the brightness by 10 percent. The first figure shows a shift by +10% for each color and the second figure -10%.

Similar to the brightness gradients but the following saturation gradients show a change of the RGB color 195, 169, 170 by changing the saturation by 10% instead.

 195, 169, 170

255, 255, 255

 252, 224, 225


 255, 253, 254

 195, 169, 170

 168, 143, 144

 141, 117, 118

 115, 92, 93

 91, 69, 70

 67, 46, 47

 44, 25, 27

 26, 0, 0

 0, 0, 0

 195, 169, 170

 195, 169, 170

 195, 150, 151

 195, 188, 189

 195, 130, 133

 195, 208, 207

 195, 110, 114

 195, 228, 226

 195, 91, 95

 195, 247, 245

 195, 72, 76

 195, 255, 255

 195, 52, 58

 195, 33, 39

 195, 13, 20

 195, 0, 8

Harmonies

Analogous

The Analogous color harmony consists of three colors that are next to each other on the color wheel.



191, 169, 179



195, 169, 170



193, 170, 162

Triad

The Triadic color harmony groups three colors that are evenly spaced from another and form a triangle on the color wheel.



195, 169, 170



166, 179, 162



161, 177, 193

Complementary

The Complementary color scheme is a pair of colors which are on the opposite of each other on the color wheel.



195, 169, 170



169, 195, 194

Split Complementary

Split-complementary colors differ from the complementary color scheme. The scheme consists of three colors, the original color and two neighbors of the complement color.



154, 179, 188



195, 169, 170



157, 180, 171

Square

The Square scheme is like the rectangle color scheme, but the four colors are evenly spaced on the color wheel.



195, 169, 170



177, 176, 158



153, 181, 180



172, 174, 192

Rectangle

The Rectangle color scheme consists of four colors that form a rectangle on the color wheel.



195, 169, 170



189, 172, 158



153, 181, 180



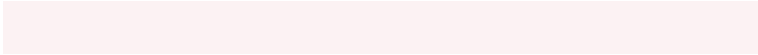
158, 178, 192

Sweetspot

The Sweet Spot groups the original color and five complimentary colors.



195, 169, 170



252, 242, 243



194, 169, 195



128, 121, 121



0, 0, 0



128, 128, 128

Same Dimension

The Same Dimension uses a secret algorithm to generate beautiful new colors.



195, 169, 170



252, 212, 214



195, 181, 169



97, 87, 88



161, 0, 6



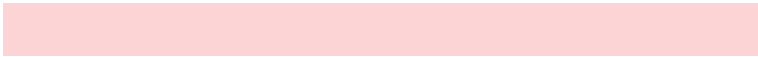
33, 0, 1

Inverse Universe

The Inverse Universe completely reimagines the original color for something new.



195, 169, 170



252, 212, 214



169, 183, 195



97, 87, 88



161, 0, 6



33, 0, 1

Previews

White Background



This preview shows how the RGB color 195, 169, 170 looks on a white background.

Color Contrast Check

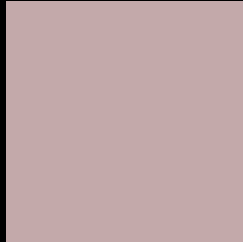
Large Text (above 18pt) WCAG AA × Fail

Any Text WCAG AA × Fail

Large Text (above 18pt) WCAG AAA × Fail

Any Text WCAG AAA × Fail

Black Background



This preview shows how the RGB color 195, 169, 170 looks on a black background.

Color Contrast Check

Large Text (above 18pt) WCAG AA ✓ Pass

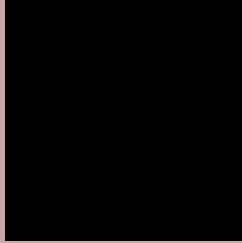
Any Text WCAG AA ✓ Pass

Large Text (above 18pt) WCAG AAA ✓ Pass

Any Text WCAG AAA ✓ Pass

If you want to check with other color combinations, try the [Color Contrast Checker](#).

RGB 195, 169, 170 Background



This preview shows how black text looks on a background with the RGB color 195, 169, 170.



This preview shows how white text looks on a background with the RGB color 195, 169, 170.

Color Blindness Simulation

Color vision deficiency is a very complex topic, and I could not describe the different causes any better than Wikipedia does, so if you want to learn more, you should check out their [article about color blindness](#).


Dichromacy



Original Color
195, 169, 170

Protanopia
179, 174, 173

Deuteranopia
194, 169, 170



Tritanopia
196, 167, 180

Trichromacy



Original Color

195, 169, 170

Protanomaly

185, 172, 172

Deuteranomaly

194, 169, 170

Tritanomaly

196, 168, 176

Monochromacy



Original Color

195, 169, 170

Achromatopsia

177, 177, 177

Achromatomaly

184, 174, 174

CSS Examples

Text

The CSS property to change the color of the text to RGB 195, 169, 170 is called "color". The color property can be set on classes, ids or directly on the HTML element.

This example shows how text in the color `rgb(195, 169, 170)` looks like.

```
.text, #text, p{  
    color:rgb(195, 169, 170)  
}
```

If you want to add a text shadow in that color use the text-shadow property, you can generate a text shadow directly with our [CSS Text Shadow Generator](#).

Here you see how black text with a 4 pixel rgb(195, 169, 170) colored shadow looks like.

```
.shadow{ text-shadow: 4px 4px 2px rgb(195, 169, 170) }
```

Border

The CSS property to change the border of an element to RGB 195, 169, 170 is called "border". The border property can be set on classes, ids or directly on the HTML element.

This example shows the color as border, it can be applied via the CSS property "border" or "border-color".

```
.border, #border, table{ border:4px solid rgb(195, 169, 170) }
```

If only the border color should be changed use the property `border-color`.

```
.border{ border-color:rgb(195, 169, 170) }
```

If you want to add a box shadow in that color use:

Here you see how a box with a 4 pixel `rgb(195, 169, 170)` colored shadow looks like.

```
.boxshadow{ -moz-box-shadow:4px 4px 4px 4px rgb(195, 169, 170); -webkit-box-shadow:4px 4px 4px 4px rgb(195, 169, 170); box-shadow:4px 4px 4px 4px rgb(195, 169, 170) }
```

Background

The CSS property to change the background color of an element to RGB 195, 169, 170 is called "background". The background property can be set on classes, ids or directly on the HTML element.

```
.background, #background, body{  
background: rgb(195, 169, 170) }
```

If only the background color should be changed can be used:

```
.background{ background-color: rgb(195,  
169, 170) }
```

This example shows the color as background, it is applied via the CSS property "background".

To optimize and compress your CSS code, you can use our [online CSS compressor and optimizer](#) based on csstidy. If you want to create a linear or radial gradient as background or border, check our [CSS Gradient Generator](#).

Hey! You found this booklet interesting? Support Converting Colors with the new Membership Option!

The pro membership hides all ads, plus gives you double the colors in the color bucket, and more awesome pro features!

[Learn more, Memberships starting at \\$2.50/m!](#)

**Follow me
on Twitter!**

@ConvertingColor