

Converting Colors

RGB(196, 134, 106)

Have a look what the booklet for
RGB(196, 134, 106) contains.

RGB(196, 134, 106)	3
<i>Conversions</i>	4
<i>Details</i>	6
<i>Harmonies</i>	11
<i>Previews</i>	23
<i>Color Blindness Simulation</i>	26
<i>CSS Examples</i>	29

Color

RGB(196, 134, 106)

Conversions

Conversions Part 1

Format	Color
Hex	C4866A
RGB	196, 134, 106
RGB Percent	77%, 53%, 42%
CMY	0.2314, 0.4745, 0.5843
CMYK	0.00, 0.32, 0.46, 0.23
HSL	19°, 43%, 59%
HSV	19°, 46%, 77%
XYZ	33.8916, 29.8266, 17.6065
YIQ	149.3460, 45.9400, 4.4360

Conversions

Conversions Part 2

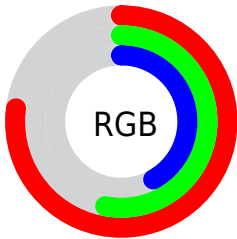
Format	Color
RYB	196, 147, 106
Decimal	12879466
CIELab	61.50, 20.49, 24.67
CIElCh	62, 32.067, 50.288
Yxy	29.8266, 0.4167, 0.3668
Android (android.graphics.Color)	4291069546 (0xFFC4866A)
YUV	149.3460, -21.3696, 40.9156
Hunter-Lab	54.6137, 15.1976, 19.1155

Details

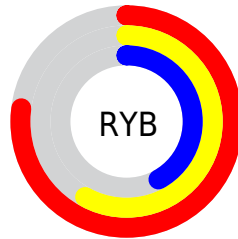
The RGB color **196, 134, 106** is a dark color, and the websafe version is hex **CC9966**. A complement of this color would be **106, 168, 196**, and the grayscale version is **150, 150, 150**.

A 20% lighter version of the original color is **255, 187, 158**, and **140, 84, 58** is the 20% darker color. If you saturate the color by 10%, you get **196, 120, 86**, and if you desaturate by 10%, it is **196, 148, 126**.

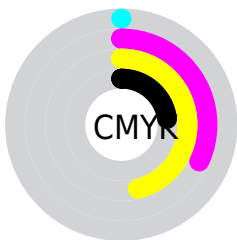
Distribution



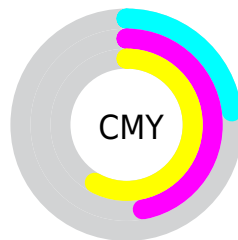
- Red (77%)
- Green (53%)
- Blue (42%)



- Red (77%)
- Yellow (58%)
- Blue (42%)



- Cyan (0%)
- Magenta (32%)
- Yellow (46%)
- Black (23%)



- Cyan (23%)
- Magenta (47%)
- Yellow (58%)

Brightness & Saturation Gradients

These gradients show how the RGB color 196, 134, 106 changes by changing the brightness by 10 percent. The first figure shows a shift by +10% for each color and the second figure -10%.

Similar to the brightness gradients but the following saturation gradients show a change of the RGB color 196, 134, 106 by changing the saturation by 10% instead.

 196, 134, 106

255, 255, 255

 255, 187, 158

 255, 215, 185

 255, 244, 212

 255, 255, 241

 196, 134, 106

 168, 108, 82

 140, 84, 58

 112, 60, 36

 86, 38, 15

 60, 16, 0


 37, 0, 0

 0, 0, 0

 196, 134, 106

 196, 120, 86

 196, 134, 106

 196, 148, 126

196, 107, 67

196, 161, 145

196, 93, 47

196, 175, 165

196, 80, 28

196, 188, 184

196, 66, 8

196, 202, 204

196, 61, 0

196, 215, 224

196, 229, 243

196, 242, 255

196, 255, 255

Harmonies

Analogous

The Analogous color harmony consists of three colors that are next to each other on the color wheel.



204, 128, 130



196, 134, 106



176, 144, 93

Triad

The Triadic color harmony groups three colors that are evenly spaced from another and form a triangle on the color wheel.



196, 134, 106



80, 163, 138



139, 145, 202

Complementary

The Complementary color scheme is a pair of colors which are on the opposite of each other on the color wheel.



196, 134, 106



106, 168, 196

Split Complementary

Split-complementary colors differ from the complementary color scheme. The scheme consists of three colors, the original color and two neighbors of the complement color.



93, 154, 204



196, 134, 106



47, 164, 167

Square

The Square scheme is like the rectangle color scheme, but the four colors are evenly spaced on the color wheel.



196, 134, 106



116, 160, 111



50, 161, 191



175, 134, 185

Rectangle

The Rectangle color scheme consists of four colors that form a rectangle on the color wheel.



196, 134, 106



158, 150, 92



50, 161, 191



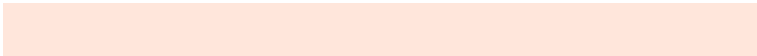
124, 148, 204

Sweetspot

The Sweet Spot groups the original color and five complimentary colors.



196, 134, 106



255, 230, 219



196, 106, 169



128, 113, 106



0, 0, 0



128, 128, 128

Same Dimension

The Same Dimension uses a secret algorithm to generate beautiful new colors.



196, 134, 106



255, 158, 115



196, 178, 106



97, 90, 87



161, 50, 0



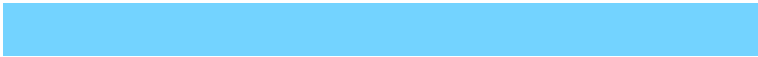
33, 10, 0

Inverse Universe

The Inverse Universe completely reimagines the original color for something new.



106, 168, 196



115, 211, 255



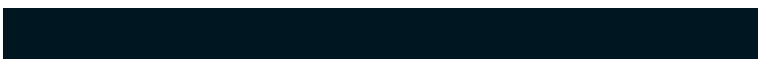
106, 124, 196



87, 94, 97



0, 111, 161



0, 23, 33

Previews

White Background



This preview shows how the RGB color 196, 134, 106 looks on a white background.

Color Contrast Check

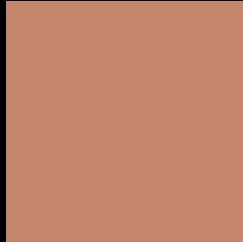
Large Text (above 18pt) WCAG AA ✓ Pass

Any Text WCAG AA ✗ Fail

Large Text (above 18pt) WCAG AAA ✗ Fail

Any Text WCAG AAA ✗ Fail

Black Background



This preview shows how the RGB color 196, 134, 106 looks on a black background.

Color Contrast Check

Large Text (above 18pt) WCAG AA ✓ Pass

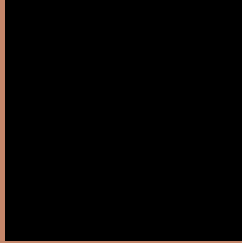
Any Text WCAG AA ✓ Pass

Large Text (above 18pt) WCAG AAA ✓ Pass

Any Text WCAG AAA × Fail

If you want to check with other color combinations, try the [Color Contrast Checker](#).

RGB 196, 134, 106 Background



This preview shows how black text looks on a background with the RGB color 196, 134, 106.



This preview shows how white text looks on a background with the RGB color 196, 134, 106.

Color Blindness Simulation

Color vision deficiency is a very complex topic, and I could not describe the different causes any better than Wikipedia does, so if you want to learn more, you should check out their [article about color blindness](#).

Dichromacy





Tritanopia
199, 129, 139

Trichromacy



Original Color

196, 134, 106

Protanomaly

172, 144, 110

Deuteranomaly

184, 140, 105

Tritanomaly

198, 131, 127

Monochromacy



Original Color

196, 134, 106

Achromatopsia

149, 149, 149

Achromatomaly

166, 144, 133

CSS Examples

Text

The CSS property to change the color of the text to RGB 196, 134, 106 is called "color". The color property can be set on classes, ids or directly on the HTML element.

This example shows how text in the color `rgb(196, 134, 106)` looks like.

```
.text, #text, p{  
    color:rgb(196, 134, 106)  
}
```

If you want to add a text shadow in that color use the text-shadow property, you can generate a text shadow directly with our [CSS Text Shadow Generator](#).

Here you see how black text with a 4 pixel rgb(196, 134, 106) colored shadow looks like.

```
.shadow{ text-shadow: 4px 4px 2px rgb(196, 134, 106) }
```

Border

The CSS property to change the border of an element to RGB 196, 134, 106 is called "border". The border property can be set on classes, ids or directly on the HTML element.

This example shows the color as border, it can be applied via the CSS property "border" or "border-color".

```
.border, #border, table{ border:4px solid rgb(196, 134, 106) }
```

If only the border color should be changed use the property `border-color`.

```
.border{ border-color:rgb(196, 134, 106) }
```

If you want to add a box shadow in that color use:

Here you see how a box with a 4 pixel `rgb(196, 134, 106)` colored shadow looks like.

```
.boxshadow{ -moz-box-shadow:4px 4px 4px  
4px rgb(196, 134, 106); -webkit-box-  
shadow:4px 4px 4px 4px rgb(196, 134, 106);  
box-shadow:4px 4px 4px 4px rgb(196, 134,  
106) }
```

Background

The CSS property to change the background color of an element to RGB 196, 134, 106 is called "background". The background property can be set on classes, ids or directly on the HTML element.

```
.background, #background, body{  
background: rgb(196, 134, 106) }
```

If only the background color should be changed can be used:

```
.background{ background-color: rgb(196,  
134, 106) }
```

This example shows the color as background, it is applied via the CSS property "background".

To optimize and compress your CSS code, you can use our [online CSS compressor and optimizer](#) based on csstidy. If you want to create a linear or radial gradient as background or border, check our [CSS Gradient Generator](#).

Hey! You found this booklet interesting? Support Converting Colors with the new Membership Option!

The pro membership hides all ads, plus gives you double the colors in the color bucket, and more awesome pro features!

[Learn more, Memberships starting at \\$2.50/m!](#)

**Follow me
on Twitter!**

@ConvertingColor