

Converting Colors

RGB(196, 161, 163)

Have a look what the booklet for
RGB(196, 161, 163) contains.

RGB(196, 161, 163)	3
<i>Conversions</i>	4
<i>Details</i>	6
<i>Harmonies</i>	11
<i>Previews</i>	23
<i>Color Blindness Simulation</i>	26
<i>CSS Examples</i>	29

Color

RGB(196, 161, 163)

Conversions

Conversions Part 1

Format	Color
Hex	C4A1A3
RGB	196, 161, 163
RGB Percent	77%, 63%, 64%
CMY	0.2314, 0.3686, 0.3608
CMYK	0.00, 0.18, 0.17, 0.23
HSL	357°, 23%, 70%
HSV	357°, 18%, 77%
XYZ	42.1207, 39.8698, 40.1260
YIQ	171.6930, 20.2180, 8.0420

Conversions

Conversions Part 2

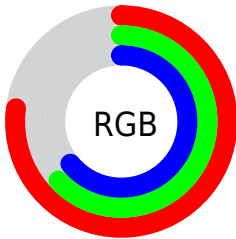
Format	Color
RYB	196, 161, 163
Decimal	12886435
CIELab	69.38, 13.20, 3.81
CIELCh	69, 13.739, 16.106
Yxy	39.8698, 0.3449, 0.3265
Android (android.graphics.Color)	4291076515 (0xFFC4A1A3)
YUV	171.6930, -4.2856, 21.3172
Hunter-Lab	63.1426, 8.5730, 6.5221

Details

The RGB color **196, 161, 163** is a light color, and the websafe version is hex **CC9999**. A complement of this color would be **161, 196, 194**, and the grayscale version is **172, 172, 172**.

A 20% lighter version of the original color is **253, 216, 218**, and **142, 109, 111** is the 20% darker color. If you saturate the color by 10%, you get **196, 141, 145**, and if you desaturate by 10%, it is **196, 181, 181**.

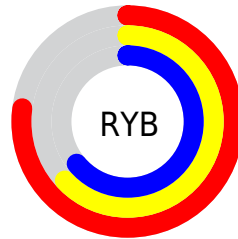
Distribution



Red (77%)

Green (63%)

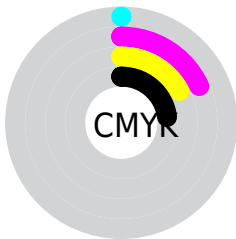
Blue (64%)



Red (77%)

Yellow (63%)

Blue (64%)

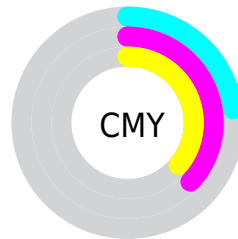


Cyan (0%)

Magenta (18%)

Yellow (17%)

Black (23%)



Cyan (23%)

Magenta (37%)

Yellow (36%)

Brightness & Saturation Gradients

These gradients show how the RGB color 196, 161, 163 changes by changing the brightness by 10 percent. The first figure shows a shift by +10% for each color and the second figure -10%.

Similar to the brightness gradients but the following saturation gradients show a change of the RGB color 196, 161, 163 by changing the saturation by 10% instead.

 196, 161, 163


255, 255, 255

 253, 216, 218


 255, 244, 246

 196, 161, 163


 169, 135, 137

 142, 109, 111

 116, 85, 87

 91, 62, 64

 67, 40, 42

 44, 19, 22

 23, 0, 0


 0, 0, 0

 196, 161, 163

 196, 161, 163

 196, 141, 145

 196, 181, 181

 196, 122, 126

 196, 200, 200

 196, 102, 108

 196, 220, 218

 196, 83, 89

 196, 239, 237

 196, 63, 71

 196, 255, 255

 196, 43, 52

 196, 24, 34

 196, 4, 15

 196, 0, 11

Harmonies

Analogous

The Analogous color harmony consists of three colors that are next to each other on the color wheel.



191, 161, 176



196, 161, 163



194, 163, 152

Triad

The Triadic color harmony groups three colors that are evenly spaced from another and form a triangle on the color wheel.



196, 161, 163



158, 174, 152



149, 172, 193

Complementary

The Complementary color scheme is a pair of colors which are on the opposite of each other on the color wheel.



196, 161, 163



161, 196, 194

Split Complementary

Split-complementary colors differ from the complementary color scheme. The scheme consists of three colors, the original color and two neighbors of the complement color.



139, 175, 187



196, 161, 163



145, 176, 163

Square

The Square scheme is like the rectangle color scheme, but the four colors are evenly spaced on the color wheel.



196, 161, 163



172, 171, 145



138, 177, 176



164, 168, 193

Rectangle

The Rectangle color scheme consists of four colors that form a rectangle on the color wheel.



196, 161, 163



189, 165, 147



138, 177, 176



145, 173, 192

Sweetspot

The Sweet Spot groups the original color and five complimentary colors.



196, 161, 163



255, 242, 243



194, 161, 196



128, 120, 120



0, 0, 0



128, 128, 128

Same Dimension

The Same Dimension uses a secret algorithm to generate beautiful new colors.



196, 161, 163



255, 201, 205



196, 176, 161



97, 87, 88



161, 0, 9



33, 0, 2

Inverse Universe

The Inverse Universe completely reimagines the original color for something new.



196, 161, 163



255, 201, 205



161, 181, 196



97, 87, 88



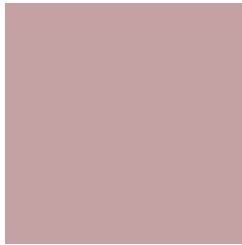
161, 0, 9



33, 0, 2

Previews

White Background



This preview shows how the RGB color 196, 161, 163 looks on a white background.

Color Contrast Check

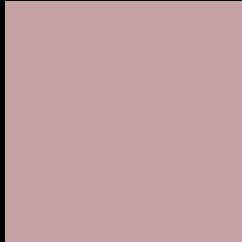
Large Text (above 18pt) WCAG AA × Fail

Any Text WCAG AA × Fail

Large Text (above 18pt) WCAG AAA × Fail

Any Text WCAG AAA × Fail

Black Background



This preview shows how the RGB color 196, 161, 163 looks on a black background.

Color Contrast Check

Large Text (above 18pt) WCAG AA ✓ Pass

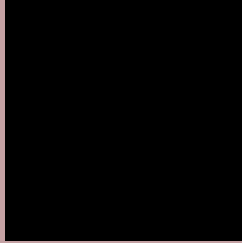
Any Text WCAG AA ✓ Pass

Large Text (above 18pt) WCAG AAA ✓ Pass

Any Text WCAG AAA ✓ Pass

If you want to check with other color combinations, try the [Color Contrast Checker](#).

RGB 196, 161, 163 Background



This preview shows how black text looks on a background with the RGB color 196, 161, 163.



This preview shows how white text looks on a background with the RGB color 196, 161, 163.

Color Blindness Simulation

Color vision deficiency is a very complex topic, and I could not describe the different causes any better than Wikipedia does, so if you want to learn more, you should check out their [article about color blindness](#).

Dichromacy



Original Color
196, 161, 163

Protanopia
173, 169, 167

Deuteranopia
189, 164, 162



Tritanopia
197, 160, 172

Trichromacy



Original Color

196, 161, 163

Protanomaly

181, 166, 166

Deuteranomaly

192, 163, 162

Tritanomaly

197, 160, 169

Monochromacy



Original Color

196, 161, 163

Achromatopsia

172, 172, 172

Achromatomaly

181, 168, 169

CSS Examples

Text

The CSS property to change the color of the text to RGB 196, 161, 163 is called "color". The color property can be set on classes, ids or directly on the HTML element.

This example shows how text in the color rgb(196, 161, 163) looks like.

```
.text, #text, p{  
    color:rgb(196, 161, 163)  
}
```

If you want to add a text shadow in that color use the text-shadow property, you can generate a text shadow directly with our [CSS Text Shadow Generator](#).

Here you see how black text with a 4 pixel rgb(196, 161, 163) colored shadow looks like.

```
.shadow{ text-shadow: 4px 4px 2px rgb(196, 161, 163) }
```

Border

The CSS property to change the border of an element to RGB 196, 161, 163 is called "border". The border property can be set on classes, ids or directly on the HTML element.

This example shows the color as border, it can be applied via the CSS property "border" or "border-color".

```
.border, #border, table{ border:4px solid rgb(196, 161, 163) }
```

If only the border color should be changed use the property `border-color`.

```
.border{ border-color:rgb(196, 161, 163) }
```

If you want to add a box shadow in that color use:

Here you see how a box with a 4 pixel `rgb(196, 161, 163)` colored shadow looks like.

```
.boxshadow{ -moz-box-shadow:4px 4px 4px  
4px rgb(196, 161, 163); -webkit-box-  
shadow:4px 4px 4px 4px rgb(196, 161, 163);  
box-shadow:4px 4px 4px 4px rgb(196, 161,  
163) }
```

Background

The CSS property to change the background color of an element to RGB 196, 161, 163 is called "background". The background property can be set on classes, ids or directly on the HTML element.

```
.background, #background, body{  
background: rgb(196, 161, 163) }
```

If only the background color should be changed can be used:

```
.background{ background-color: rgb(196,  
161, 163) }
```

This example shows the color as background, it is applied via the CSS property "background".

To optimize and compress your CSS code, you can use our [online CSS compressor and optimizer](#) based on csstidy. If you want to create a linear or radial gradient as background or border, check our [CSS Gradient Generator](#).

Hey! You found this booklet interesting? Support Converting Colors with the new Membership Option!

The pro membership hides all ads, plus gives you double the colors in the color bucket, and more awesome pro features!

[Learn more, Memberships starting at \\$2.50/m!](#)

**Follow me
on Twitter!**

@ConvertingColor