

# Converting Colors

RGB(196, 75, 122)

Have a look what the booklet for  
RGB(196, 75, 122) contains.

<b>RGB(196, 75, 122)</b> .....	3
<i><b>Conversions</b></i> .....	4
<i><b>Details</b></i> .....	6
<i><b>Harmonies</b></i> .....	11
<i><b>Previews</b></i> .....	23
<i><b>Color Blindness Simulation</b></i> .....	26
<i><b>CSS Examples</b></i> .....	29

# Color

**RGB(196, 75, 122)**

# Conversions

## Conversions Part 1

<b>Format</b>	<b>Color</b>
Hex	C44B7A
RGB	196, 75, 122
RGB Percent	77%, 29%, 48%
CMY	0.2314, 0.7059, 0.5216
CMYK	0.00, 0.62, 0.38, 0.23
HSL	337°, 51%, 53%
HSV	337°, 62%, 77%
XYZ	28.7939, 18.1731, 20.4025
YIQ	116.5370, 57.0290, 40.2690

# Conversions

## Conversions Part 2

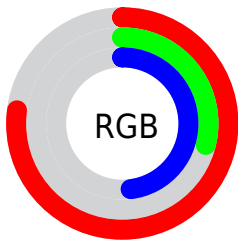
<b>Format</b>	<b>Color</b>
<b>RYB</b>	196, 75, 122
Decimal	12864378
CIELab	49.71, 52.59, -1.16
CIELCh	50, 52.608, 358.734
Yxy	18.1731, 0.4274, 0.2698
Android (android.graphics.Color)	4291054458 (0xFFC44B7A)
YUV	116.5370, 2.6933, 69.6891
Hunter-Lab	42.6299, 45.9636, 1.4649

# Details

The RGB color **196, 75, 122** is a dark color, and the websafe version is hex **CC6699**. The color can be described as dark muted rose. A complement of this color would be **75, 196, 149**, and the grayscale version is **116, 116, 116**.

A 20% lighter version of the original color is **255, 130, 174**, and **138, 10, 74** is the 20% darker color. If you saturate the color by 10%, you get **196, 55, 110**, and if you desaturate by 10%, it is **196, 95, 134**.

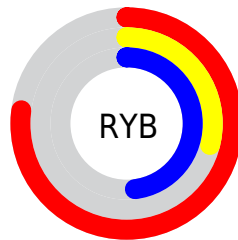
# Distribution



Red (77%)

Green (29%)

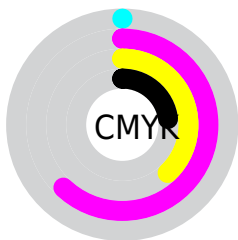
Blue (48%)



Red (77%)

Yellow (29%)

Blue (48%)

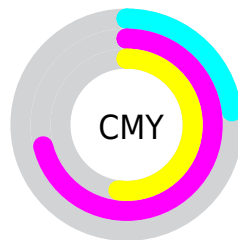


Cyan (0%)

Magenta (62%)

Yellow (38%)

Black (23%)



Cyan (23%)

Magenta (71%)

Yellow (52%)

# Brightness & Saturation Gradients

These gradients show how the RGB color 196, 75, 122 changes by changing the brightness by 10 percent. The first figure shows a shift by +10% for each color and the second figure -10%.

Similar to the brightness gradients but the following saturation gradients show a change of the RGB color 196, 75, 122 by changing the saturation by 10% instead.




 196, 75, 122       196, 75, 122

255, 255, 255       167, 47, 97

 255, 130, 174       138, 10, 74

 255, 157, 202       110, 0, 51

 255, 185, 230       82, 0, 30

 255, 214, 255       58, 0, 4

 255, 243, 255       19, 0, 0

 0, 0, 0

 196, 75, 122       196, 75, 122

 196, 55, 110       196, 95, 134

196, 36, 98

196, 114, 146

196, 16, 86

196, 134, 158

196, 0, 76

196, 153, 170

196, 173, 182

196, 193, 194

196, 212, 206

196, 232, 218

196, 251, 230

# Harmonies

## Analogous

The Analogous color harmony consists of three colors that are next to each other on the color wheel.



170, 87, 165



196, 75, 122



196, 81, 78

# Triad

The Triadic color harmony groups three colors that are evenly spaced from another and form a triangle on the color wheel.



196, 75, 122



98, 128, 31



0, 134, 194

# Complementary

The Complementary color scheme is a pair of colors which are on the opposite of each other on the color wheel.



196, 75, 122



75, 196, 149

# Split Complementary

Split-complementary colors differ from the complementary color scheme. The scheme consists of three colors, the original color and two neighbors of the complement color.



0, 139, 160



196, 75, 122



27, 136, 69

# Square

The Square scheme is like the rectangle color scheme, but the four colors are evenly spaced on the color wheel.



196, 75, 122



142, 115, 15



0, 139, 115



0, 124, 208

# Rectangle

The Rectangle color scheme consists of four colors that form a rectangle on the color wheel.



196, 75, 122



185, 92, 52



0, 139, 115



0, 136, 185



# Sweetspot

The Sweet Spot groups the original color and five complimentary colors.



196, 75, 122



255, 207, 225



148, 75, 196



128, 98, 110



0, 0, 0



128, 128, 128



# Same Dimension

The Same Dimension uses a secret algorithm to generate beautiful new colors.



196, 75, 122



255, 66, 140



196, 87, 75



97, 87, 91



161, 0, 62



33, 0, 13



# Inverse Universe

The Inverse Universe completely reimagines the original color for something new.



196, 75, 122



255, 66, 140



75, 184, 196



97, 87, 91



161, 0, 62



33, 0, 13



# Previews

## White Background



This preview shows how the RGB color 196, 75, 122 looks on a white background.

## Color Contrast Check

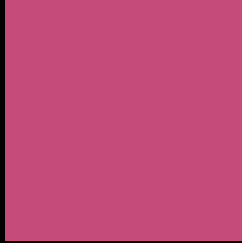
Large Text (above 18pt) WCAG AA ✓ Pass

Any Text WCAG AA ✓ Pass

Large Text (above 18pt) WCAG AAA ✓ Pass

Any Text WCAG AAA × Fail

# Black Background



This preview shows how the RGB color 196, 75, 122 looks on a black background.

## Color Contrast Check

Large Text (above 18pt) WCAG AA ✓ Pass

Any Text WCAG AA ✓ Pass

Large Text (above 18pt) WCAG AAA ✓ Pass

Any Text WCAG AAA × Fail

If you want to check with other color combinations, try the [Color Contrast Checker](#).



## RGB 196, 75, 122 Background



This preview shows how black text looks on a background with the RGB color 196, 75, 122.

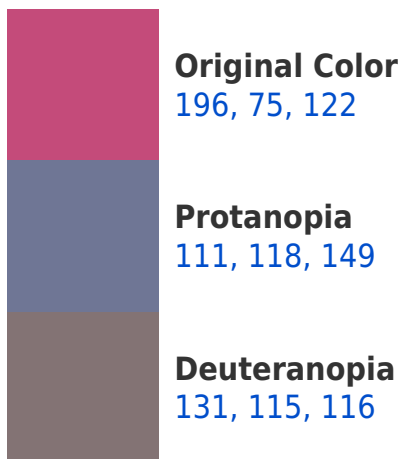


This preview shows how white text looks on a background with the RGB color 196, 75, 122.

# Color Blindness Simulation

Color vision deficiency is a very complex topic, and I could not describe the different causes any better than Wikipedia does, so if you want to learn more, you should check out their [article about color blindness](#).

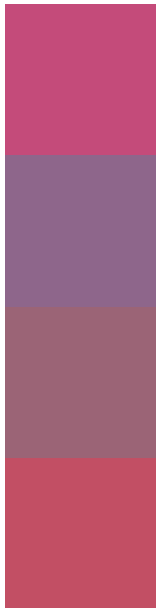
## Dichromacy





**Tritanopia**  
193, 82, 88

# Trichromacy



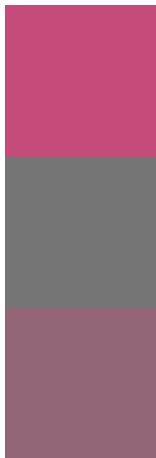
**Original Color**  
196, 75, 122

**Protanomaly**  
142, 102, 139

**Deuteranomaly**  
155, 100, 118

**Tritanomaly**  
194, 79, 100

# Monochromacy



**Original Color**  
196, 75, 122

**Achromatopsia**  
117, 117, 117

**Achromatomaly**  
146, 102, 119

# CSS Examples

## Text

The CSS property to change the color of the text to RGB 196, 75, 122 is called "color". The color property can be set on classes, ids or directly on the HTML element.

This example shows how text in the color `rgb(196, 75, 122)` looks like.

```
.text, #text, p{  
    color:rgb(196, 75, 122)  
}
```

If you want to add a text shadow in that color use the text-shadow property, you can generate a text shadow directly with our [CSS Text Shadow Generator](#).

Here you see how black text with a 4 pixel rgb(196, 75, 122) colored shadow looks like.

```
.shadow{ text-shadow: 4px 4px 2px rgb(196, 75, 122) }
```

## Border

The CSS property to change the border of an element to RGB 196, 75, 122 is called "border". The border property can be set on classes, ids or directly on the HTML element.

This example shows the color as border, it can be applied via the CSS property "border" or "border-color".

```
.border, #border, table{ border:4px solid rgb(196, 75, 122) }
```

If only the border color should be changed use the property `border-color`.

```
.border{ border-color:rgb(196, 75, 122) }
```

If you want to add a box shadow in that color use:

Here you see how a box with a 4 pixel `rgb(196, 75, 122)` colored shadow looks like.

```
.boxshadow{ -moz-box-shadow:4px 4px 4px  
4px rgb(196, 75, 122); -webkit-box-  
shadow:4px 4px 4px 4px rgb(196, 75, 122);  
box-shadow:4px 4px 4px 4px rgb(196, 75,  
122) }
```

# Background

The CSS property to change the background color of an element to RGB 196, 75, 122 is called "background". The background property can be set on classes, ids or directly on the HTML element.

```
.background, #background, body{  
background: rgb(196, 75, 122) }
```

If only the background color should be changed can be used:

```
.background{ background-color: rgb(196, 75,  
122) }
```

This example shows the color as background, it is applied via the CSS property "background".

To optimize and compress your CSS code, you can use our [online CSS compressor and optimizer](#) based on csstidy. If you want to create a linear or radial gradient as background or border, check our [CSS Gradient Generator](#).



Hey! You found this booklet interesting? Support Converting Colors with the new Membership Option!

The pro membership hides all ads, plus gives you double the colors in the color bucket, and more awesome pro features!

**[Learn more, Memberships starting at \\$2.50/m!](#)**

**Follow me  
on Twitter!**

@ConvertingColor