

Converting Colors

RGB(197, 142, 139)

Have a look what the booklet for
RGB(197, 142, 139) contains.

RGB(197, 142, 139)	3
<i>Conversions</i>	4
<i>Details</i>	6
<i>Harmonies</i>	11
<i>Previews</i>	23
<i>Color Blindness Simulation</i>	26
<i>CSS Examples</i>	29

Color

RGB(197, 142, 139)

Conversions

Conversions Part 1

Format	Color
Hex	C58E8B
RGB	197, 142, 139
RGB Percent	77%, 56%, 55%
CMY	0.2275, 0.4431, 0.4549
CMYK	0.00, 0.28, 0.29, 0.23
HSL	3°, 33%, 66%
HSV	3°, 29%, 77%
XYZ	37.3592, 33.0804, 28.8422
YIQ	158.1030, 33.7430, 10.7270

Conversions

Conversions Part 2

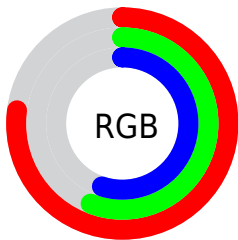
Format	Color
RYB	197, 142, 139
Decimal	12947083
CIELab	64.23, 20.46, 9.87
CIELCh	64, 22.717, 25.766
Yxy	33.0804, 0.3763, 0.3332
Android (android.graphics.Color)	4291137163 (0xFFC58E8B)
YUV	158.1030, -9.4178, 34.1127
Hunter-Lab	57.5156, 15.2922, 10.5289

Details

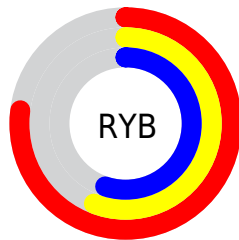
The RGB color **197, 142, 139** is a light color, and the websafe version is hex **CC9999**. A complement of this color would be **139, 194, 197**, and the grayscale version is **158, 158, 158**.

A 20% lighter version of the original color is **255, 196, 192**, and **142, 91, 89** is the 20% darker color. If you saturate the color by 10%, you get **197, 123, 119**, and if you desaturate by 10%, it is **197, 161, 159**.

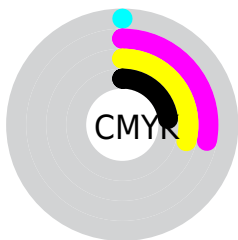
Distribution



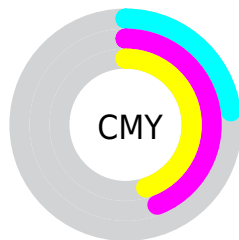
- Red (77%)
- Green (56%)
- Blue (55%)



- Red (77%)
- Yellow (56%)
- Blue (55%)



- Cyan (0%)
- Magenta (28%)
- Yellow (29%)
- Black (23%)



- Cyan (23%)
- Magenta (44%)
- Yellow (45%)

Brightness & Saturation Gradients

These gradients show how the RGB color 197, 142, 139 changes by changing the brightness by 10 percent. The first figure shows a shift by +10% for each color and the second figure -10%.

Similar to the brightness gradients but the following saturation gradients show a change of the RGB color 197, 142, 139 by changing the saturation by 10% instead.

 197, 142, 139

255, 255, 255

 255, 196, 192


 255, 224, 220

 255, 253, 249

 197, 142, 139

 169, 116, 114

 142, 91, 89

 115, 67, 66

 90, 45, 44


 65, 23, 23

 42, 0, 0

 0, 0, 0

 197, 142, 139

 197, 123, 119

 197, 142, 139

 197, 161, 159

 197, 105, 100

 197, 179, 178

 197, 86, 80

 197, 198, 198

 197, 67, 60

 197, 217, 218

 197, 49, 40

 197, 235, 238

 197, 30, 21

 197, 254, 255

 197, 11, 1

 197, 255, 255

 197, 10, 0

Harmonies

Analogous

The Analogous color harmony consists of three colors that are next to each other on the color wheel.



194, 141, 159



197, 142, 139



189, 147, 123

Triad

The Triadic color harmony groups three colors that are evenly spaced from another and form a triangle on the color wheel.



197, 142, 139



129, 165, 132



127, 158, 196

Complementary

The Complementary color scheme is a pair of colors which are on the opposite of each other on the color wheel.



197, 142, 139



139, 194, 197

Split Complementary

Split-complementary colors differ from the complementary color scheme. The scheme consists of three colors, the original color and two neighbors of the complement color.



104, 164, 189



197, 142, 139



108, 167, 152

Square

The Square scheme is like the rectangle color scheme, but the four colors are evenly spaced on the color wheel.



197, 142, 139



152, 160, 119



97, 167, 173



155, 151, 192

Rectangle

The Rectangle color scheme consists of four colors that form a rectangle on the color wheel.



197, 142, 139



180, 151, 117



97, 167, 173



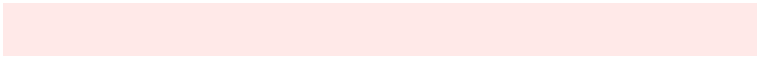
118, 160, 194

Sweetspot

The Sweet Spot groups the original color and five complimentary colors.



197, 142, 139



255, 233, 232



197, 139, 194



128, 114, 113



0, 0, 0



128, 128, 128

Same Dimension

The Same Dimension uses a secret algorithm to generate beautiful new colors.



197, 142, 139



255, 170, 166



197, 171, 139



99, 90, 90



163, 8, 0



36, 2, 0

Inverse Universe

The Inverse Universe completely reimagines the original color for something new.



139, 194, 197



166, 250, 255



139, 165, 197



90, 99, 99



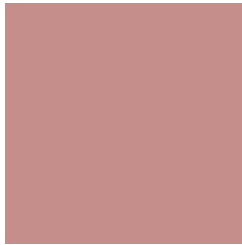
0, 155, 163



0, 34, 36

Previews

White Background



This preview shows how the RGB color 197, 142, 139 looks on a white background.

Color Contrast Check

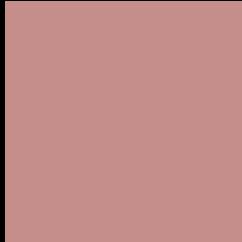
Large Text (above 18pt) WCAG AA × Fail

Any Text WCAG AA × Fail

Large Text (above 18pt) WCAG AAA × Fail

Any Text WCAG AAA × Fail

Black Background



This preview shows how the RGB color 197, 142, 139 looks on a black background.

Color Contrast Check

Large Text (above 18pt) WCAG AA ✓ Pass

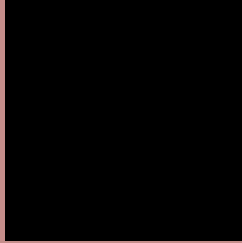
Any Text WCAG AA ✓ Pass

Large Text (above 18pt) WCAG AAA ✓ Pass

Any Text WCAG AAA ✓ Pass

If you want to check with other color combinations, try the [Color Contrast Checker](#).

RGB 197, 142, 139 Background



This preview shows how black text looks on a background with the RGB color 197, 142, 139.



This preview shows how white text looks on a background with the RGB color 197, 142, 139.

Color Blindness Simulation

Color vision deficiency is a very complex topic, and I could not describe the different causes any better than Wikipedia does, so if you want to learn more, you should check out their [article about color blindness](#).

Dichromacy



Original Color
197, 142, 139

Protanopia
161, 155, 146

Deuteranopia
178, 150, 137



Tritanopia
198, 140, 151

Trichromacy



Original Color

197, 142, 139

Protanomaly

174, 150, 143

Deuteranomaly

185, 147, 138

Tritanomaly

198, 141, 147

Monochromacy



Original Color

197, 142, 139

Achromatopsia

158, 158, 158

Achromatomaly

172, 152, 151

CSS Examples

Text

The CSS property to change the color of the text to RGB 197, 142, 139 is called "color". The color property can be set on classes, ids or directly on the HTML element.

This example shows how text in the color `rgb(197, 142, 139)` looks like.

```
.text, #text, p{  
    color:rgb(197, 142, 139)  
}
```

If you want to add a text shadow in that color use the text-shadow property, you can generate a text shadow directly with our [CSS Text Shadow Generator](#).

Here you see how black text with a 4 pixel rgb(197, 142, 139) colored shadow looks like.

```
.shadow{ text-shadow: 4px 4px 2px rgb(197, 142, 139) }
```

Border

The CSS property to change the border of an element to RGB 197, 142, 139 is called "border". The border property can be set on classes, ids or directly on the HTML element.

This example shows the color as border, it can be applied via the CSS property "border" or "border-color".

```
.border, #border, table{ border:4px solid rgb(197, 142, 139) }
```

If only the border color should be changed use the property `border-color`.

```
.border{ border-color:rgb(197, 142, 139) }
```

If you want to add a box shadow in that color use:

Here you see how a box with a 4 pixel `rgb(197, 142, 139)` colored shadow looks like.

```
.boxshadow{ -moz-box-shadow:4px 4px 4px  
4px rgb(197, 142, 139); -webkit-box-  
shadow:4px 4px 4px 4px rgb(197, 142, 139);  
box-shadow:4px 4px 4px 4px rgb(197, 142,  
139) }
```

Background

The CSS property to change the background color of an element to RGB 197, 142, 139 is called "background". The background property can be set on classes, ids or directly on the HTML element.

```
.background, #background, body{  
background: rgb(197, 142, 139) }
```

If only the background color should be changed can be used:

```
.background{ background-color: rgb(197,  
142, 139) }
```

This example shows the color as background, it is applied via the CSS property "background".

To optimize and compress your CSS code, you can use our [online CSS compressor and optimizer](#) based on csstidy. If you want to create a linear or radial gradient as background or border, check our [CSS Gradient Generator](#).

Hey! You found this booklet interesting? Support Converting Colors with the new Membership Option!

The pro membership hides all ads, plus gives you double the colors in the color bucket, and more awesome pro features!

[Learn more, Memberships starting at \\$2.50/m!](#)

**Follow me
on Twitter!**

@ConvertingColor