

Converting Colors

RGB(197, 146, 136)

Have a look what the booklet for
RGB(197, 146, 136) contains.

RGB(197, 146, 136)	3
<i>Conversions</i>	4
<i>Details</i>	6
<i>Harmonies</i>	11
<i>Previews</i>	23
<i>Color Blindness Simulation</i>	26
<i>CSS Examples</i>	29

Color

RGB(197, 146, 136)

Conversions

Conversions Part 1

Format	Color
Hex	C59288
RGB	197, 146, 136
RGB Percent	77%, 57%, 53%
CMY	0.2275, 0.4275, 0.4667
CMYK	0.00, 0.26, 0.31, 0.23
HSL	10°, 34%, 65%
HSV	10°, 31%, 77%
XYZ	37.7488, 34.2057, 27.9053
YIQ	160.1090, 33.6060, 7.7020

Conversions

Conversions Part 2

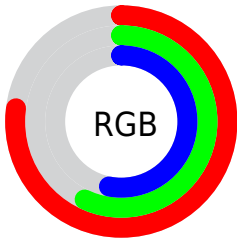
Format	Color
RYB	197, 148, 136
Decimal	12948104
CIELab	65.13, 17.85, 12.83
CIElCh	65, 21.984, 35.711
Yxy	34.2057, 0.3780, 0.3425
Android (android.graphics.Color)	4291138184 (0xFFC59288)
YUV	160.1090, -11.8857, 32.3534
Hunter-Lab	58.4856, 12.8607, 12.6508

Details

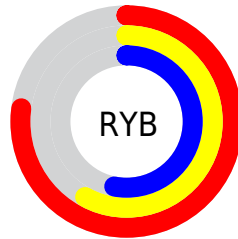
The RGB color **197, 146, 136** is a light color, and the websafe version is hex **CC9999**. A complement of this color would be **136, 187, 197**, and the grayscale version is **160, 160, 160**.

A 20% lighter version of the original color is **255, 200, 189**, and **142, 95, 86** is the 20% darker color. If you saturate the color by 10%, you get **197, 130, 116**, and if you desaturate by 10%, it is **197, 162, 156**.

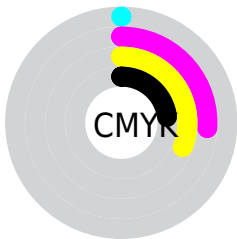
Distribution



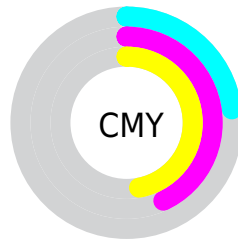
- Red (77%)
- Green (57%)
- Blue (53%)



- Red (77%)
- Yellow (58%)
- Blue (53%)



- Cyan (0%)
- Magenta (26%)
- Yellow (31%)
- Black (23%)



- Cyan (23%)
- Magenta (43%)
- Yellow (47%)

Brightness & Saturation Gradients

These gradients show how the RGB color 197, 146, 136 changes by changing the brightness by 10 percent. The first figure shows a shift by +10% for each color and the second figure -10%.

Similar to the brightness gradients but the following saturation gradients show a change of the RGB color 197, 146, 136 by changing the saturation by 10% instead.

 197, 146, 136

255, 255, 255

 255, 200, 189


 255, 228, 217

 255, 255, 246

 197, 146, 136

 169, 120, 111

 142, 95, 86

 115, 71, 63

 90, 48, 41


 65, 27, 21

 42, 4, 0

 0, 0, 0

 197, 146, 136

 197, 130, 116

 197, 146, 136

 197, 162, 156

 197, 113, 97

 197, 179, 175

 197, 97, 77

 197, 195, 195

 197, 80, 57

 197, 212, 215

 197, 64, 38

 197, 228, 235

 197, 47, 18

 197, 245, 254

 197, 32, 0

 197, 255, 255

Harmonies

Analogous

The Analogous color harmony consists of three colors that are next to each other on the color wheel.



197, 144, 155



197, 146, 136



187, 151, 123

Triad

The Triadic color harmony groups three colors that are evenly spaced from another and form a triangle on the color wheel.



197, 146, 136



125, 168, 141



140, 159, 197

Complementary

The Complementary color scheme is a pair of colors which are on the opposite of each other on the color wheel.



197, 146, 136



136, 187, 197

Split Complementary

Split-complementary colors differ from the complementary color scheme. The scheme consists of three colors, the original color and two neighbors of the complement color.



115, 164, 193



197, 146, 136



107, 169, 161

Square

The Square scheme is like the rectangle color scheme, but the four colors are evenly spaced on the color wheel.



197, 146, 136



147, 164, 126



102, 168, 180



166, 152, 190

Rectangle

The Rectangle color scheme consists of four colors that form a rectangle on the color wheel.



197, 146, 136



175, 156, 119



102, 168, 180



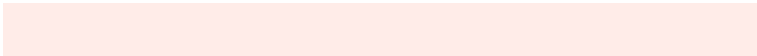
131, 161, 197

Sweetspot

The Sweet Spot groups the original color and five complimentary colors.



197, 146, 136



255, 236, 232



197, 136, 188



128, 116, 113



0, 0, 0



128, 128, 128

Same Dimension

The Same Dimension uses a secret algorithm to generate beautiful new colors.



197, 146, 136



255, 176, 161



197, 176, 136



99, 91, 90



163, 27, 0



36, 6, 0

Inverse Universe

The Inverse Universe completely reimagines the original color for something new.



136, 187, 197



161, 240, 255



136, 157, 197



90, 98, 99



0, 136, 163



0, 30, 36

Previews

White Background



This preview shows how the RGB color 197, 146, 136 looks on a white background.

Color Contrast Check

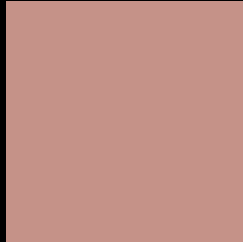
Large Text (above 18pt) WCAG AA × Fail

Any Text WCAG AA × Fail

Large Text (above 18pt) WCAG AAA × Fail

Any Text WCAG AAA × Fail

Black Background



This preview shows how the RGB color 197, 146, 136 looks on a black background.

Color Contrast Check

Large Text (above 18pt) WCAG AA ✓ Pass

Any Text WCAG AA ✓ Pass

Large Text (above 18pt) WCAG AAA ✓ Pass

Any Text WCAG AAA ✓ Pass

If you want to check with other color combinations, try the [Color Contrast Checker](#).

RGB 197, 146, 136 Background



This preview shows how black text looks on a background with the RGB color 197, 146, 136.



This preview shows how white text looks on a background with the RGB color 197, 146, 136.

Color Blindness Simulation

Color vision deficiency is a very complex topic, and I could not describe the different causes any better than Wikipedia does, so if you want to learn more, you should check out their [article about color blindness](#).


Dichromacy



Original Color
197, 146, 136

Protanopia
165, 158, 142

Deuteranopia
182, 152, 135



Tritanopia
199, 143, 154

Trichromacy



Original Color

197, 146, 136

Protanomaly

177, 154, 140

Deuteranomaly

187, 150, 135

Tritanomaly

198, 144, 147

Monochromacy



Original Color

197, 146, 136

Achromatopsia

160, 160, 160

Achromatomaly

173, 155, 151

CSS Examples

Text

The CSS property to change the color of the text to RGB 197, 146, 136 is called "color". The color property can be set on classes, ids or directly on the HTML element.

This example shows how text in the color `rgb(197, 146, 136)` looks like.

```
.text, #text, p{  
    color:rgb(197, 146, 136)  
}
```

If you want to add a text shadow in that color use the text-shadow property, you can generate a text shadow directly with our [CSS Text Shadow Generator](#).

Here you see how black text with a 4 pixel rgb(197, 146, 136) colored shadow looks like.

```
.shadow{ text-shadow: 4px 4px 2px rgb(197, 146, 136) }
```

Border

The CSS property to change the border of an element to RGB 197, 146, 136 is called "border". The border property can be set on classes, ids or directly on the HTML element.

This example shows the color as border, it can be applied via the CSS property "border" or "border-color".

```
.border, #border, table{ border:4px solid rgb(197, 146, 136) }
```

If only the border color should be changed use the property `border-color`.

```
.border{ border-color:rgb(197, 146, 136) }
```

If you want to add a box shadow in that color use:

Here you see how a box with a 4 pixel `rgb(197, 146, 136)` colored shadow looks like.

```
.boxshadow{ -moz-box-shadow:4px 4px 4px  
4px rgb(197, 146, 136); -webkit-box-  
shadow:4px 4px 4px 4px rgb(197, 146, 136);  
box-shadow:4px 4px 4px 4px rgb(197, 146,  
136) }
```

Background

The CSS property to change the background color of an element to RGB 197, 146, 136 is called "background". The background property can be set on classes, ids or directly on the HTML element.

```
.background, #background, body{  
background: rgb(197, 146, 136) }
```

If only the background color should be changed can be used:

```
.background{ background-color: rgb(197,  
146, 136) }
```

This example shows the color as background, it is applied via the CSS property "background".

To optimize and compress your CSS code, you can use our [online CSS compressor and optimizer](#) based on csstidy. If you want to create a linear or radial gradient as background or border, check our [CSS Gradient Generator](#).

Hey! You found this booklet interesting? Support Converting Colors with the new Membership Option!

The pro membership hides all ads, plus gives you double the colors in the color bucket, and more awesome pro features!

[Learn more, Memberships starting at \\$2.50/m!](#)

**Follow me
on Twitter!**

@ConvertingColor